



## June PSG Meeting

Wednesday 6 June 2018

Began 9:00am ended 10:45am

Room 110 of Secondary building

*Parent Supporters Group*

Stay informed | Get connected | Show support

**Attendees:** Grant Gillies (Head of Primary), Amos Turner-Wardell (Head of Secondary), Sara Berenguer (Assistant Head of Primary), Susan Dineen (Director of Marketing and Admission), Angela McFarlane, Carina Persson, Carolyn Whitehouse, Charlie Chen Ci, Chuleeporn Klinboon (Som), Claudia Von Sydow, Gina Linane, HyunHee Lee, Janet Muldong, Karen Brent, Katharina Winter, Kylie Day, Lenka Vybiralikova, Louise Gillies, Louise Wiberg, Mangala Shanbhag, Mini Sharma, Montip Sahaya, Nawarat Richardson (Aui), Neil James, Olimpia Cristea, Rika Dewina, Rose Gamito, Uma Nagulapalli, Vichaya Ganjanakij (Vicky), Waranrat Prathipskunthong, Yuko Tsuji

### 1. Presentation from Mr Grant Gillies (Head of Primary) and Amos Turner-Wardell (Head of Secondary)

#### “The Value of Round Square for Students”

- Ms Amos spoke to parents and answered questions about the value of Round Square, which included the philosophy of Round Square and the IDEALS spirits.
- Mr Grant talked about the benefit of the upcoming Round Square Weeks. He also talked about that all Round Square activities and CCAs are run under the Round Square concepts.
- It was suggested that all children have passports or online systems to register their activities as evidence of involvements and achievements.

### 2. Concerns/suggestions from parents

- ❖ **Primary school hour changes:** Concerns and questions were raised about extended school hours for Primary children.
  - The school will offer an extended day for Primary School from August 2018, which was decided in consideration of feedback from children, teachers and parents.
  - New Primary school hour from August will be 8:20am-3:20pm for Y1 and up. Early Primary parents can still pick up their children midday, but children can stay at school until 3pm as an option with no extra cost. CCAs time will be the same as this year.
  - This change will make Primary and Secondary students work together for CCAs.
- ❖ **Primary MFL options:** The school will expand language options for Primary children from August 2018. Mandarin for Reception and up and Korean for Years 3 and up will be available.
- ❖ **Primary Book Sale:** Parents suggested that teachers or parents assist children to choose books when they visit book fair. --The school will deal with the issue for the next academic year.

### 3. Review of the recent PSG activities

- ❖ **Moodle and CHQ training for/led by and for parents (Thursday 10 May):** The PSG hosted our 3rd Moodle and CHQ workshop with support by Ms Nicole (Head of Primary Computing) and Khun Arm (CCA Administrator).
- ❖ **Japanese cooking class (Wednesday 16 May):** Thank you to the parents who hosted the cooking class. **The next cooking class will be Italian cooking on Wednesday 13 May.** Please contact Sarah Collie or Carina Persson at [regentsparentscookingclass@hotmail.com](mailto:regentsparentscookingclass@hotmail.com) for reservation.

Blue = Response to PSG  
Red = Need from PSG  
Green = Need from School



- ❖ **Table Top Sale (Friday 25 May):** The PSG hosted our first sales event at the ground floor of Early Primary building. 17 parents and school staffs signed up for the event as sellers. It was a huge success and 6,480 THB was raised through the table fees and the sales from the PSG table. All the money raised was sent to the PSG main fund that is for future PSG activities and charity.
- ❖ **Y6 parents transition tour (Monday 4 June):** Secondary parent volunteers supported the Secondary school tour for Y6 parents that was hosted by school.

4. **Follow up items and responses from Senior Leadership Team (SLT):**

❖ **Destinations of the fund raised through the International Cafe:**

- Still awaiting further information from Senior Leadership Team (SLT)
- The PSG suggested that students identify destinations first before fundraising for next time.

5. **Treasury update (As of Wednesday 6 June)**

- **PSG main fund:** 45,138.00 baht
- **Second hand uniform sales:** 3,140.00 baht
- **Green Grub fund:** 3,242.00 baht
- **Parents Cooking Classes Fund:** 3,349.00 baht

6. **The PSG fund**

- The balance of the PSG main fund will be carried forward to the new academic year of 2018-19.
- Gina Linane (Treasurer) made a proposal on the PSG main fund that the PSG will spend about 5,000 THB to purchase ingredients of snow cone for Regents Race. – **Parent attendees voted in favour of the motion.**

7. **Election for the PSG Board and Committee 2018-19**

The PSG is pleased to announce that the following parents have been elected as the PSG Board and Committee 2018-19. Congratulations and thank you to all the newly elected members. The new and current Committee members will work together until the end of this academic year for smooth transitions. The new PSG organisation chart for 2018-19 (as of June 2018) is attached below.

- Chairperson: Carolyn Whitehouse
- Secretary: Claudia Von Sydow
- Treasurer: Amanda Sullivan
- Eco Committee: Kylie Day
- Green Grub/Thai Rep: Chuleeporn Klinboon (Som)
- Green Grub: Montip Sahaya
- Parents Cooking Class: Sarah Collie
- Sports: Angela McFarlane
- Performing Arts: Nawarat Richardson (Aui),
- Food Committee: Rika Dewina
- Marketing: Yuko Tsuji
- PCC Coordinator: Gina Linane
- Primary Rep: Vichaya Ganjanakij (Vicky),
- Primary Rep: SongAk Han
- Secondary Rep: Mangala Shanbhag
- Secondary Rep: Alice Moe
- Xmas Fair Coordinator: Rose Gamito,

Blue = Response to PSG

Red = Need from PSG

Green = Need from School



**8. Regents Race (Thursday 28 June) : Volunteers needed**

- The PSG will provide free snow cones to all students. If you can help out with our snow cone stand, Please contact Yuko Tsuji at [psg\\_secretary@regents-pattaya.co.th](mailto:psg_secretary@regents-pattaya.co.th)

**9. Re-Fill station**

Kylie Day (Eco Committee parent) promoted the opening of Re-Fill Station on campus. The Re-Fill station will be open on Monday 11 June. Natural/organic household cleaning products, personal care products and eco-friendly items such as bamboo toothbrushes and reusable straws will be available to purchase. All proceeds will go towards the Eco Committee project for plastic reduction.

**10. Food Committee**

- Parents have kept asking for improvement to the food service at school. Most concerns are about the quality/quantity/variety/cost of the food and the facilities of the canteens.
- The school will launch a Food Committee to improve the food service. The committee will consist of students/children, teachers, parents, Ms Kirsty (Director of Operations) and Epicure (the food service provider at school) in order to receive both positive and negative feedback that could help the school make the food service even better.
- The PSG will be get involved as a group of parents. Any parents who are interested are welcome to join a Food Committee. Please contact Yuko Tsuji at [psg\\_secretary@regents-pattaya.co.th](mailto:psg_secretary@regents-pattaya.co.th)

**11. Upcoming PSG events**

- ❖ **Car Boot Sale (Sunday 24 June, 8-10am at the parking area between the language block and the swimming pool)** : Entrance fee is free for buyers and 200 THB for sellers. To sign up for a car/table, please contact Yuko Tsuji at [psg\\_secretary@regents-pattaya.co.th](mailto:psg_secretary@regents-pattaya.co.th)

**12. Next PSG Meeting:** The date of the first PSG meeting of Term 1 will be announced as soon as we received confirmation from the Senior Leadership Team (SLT).

**13. Volunteer Sign Up**

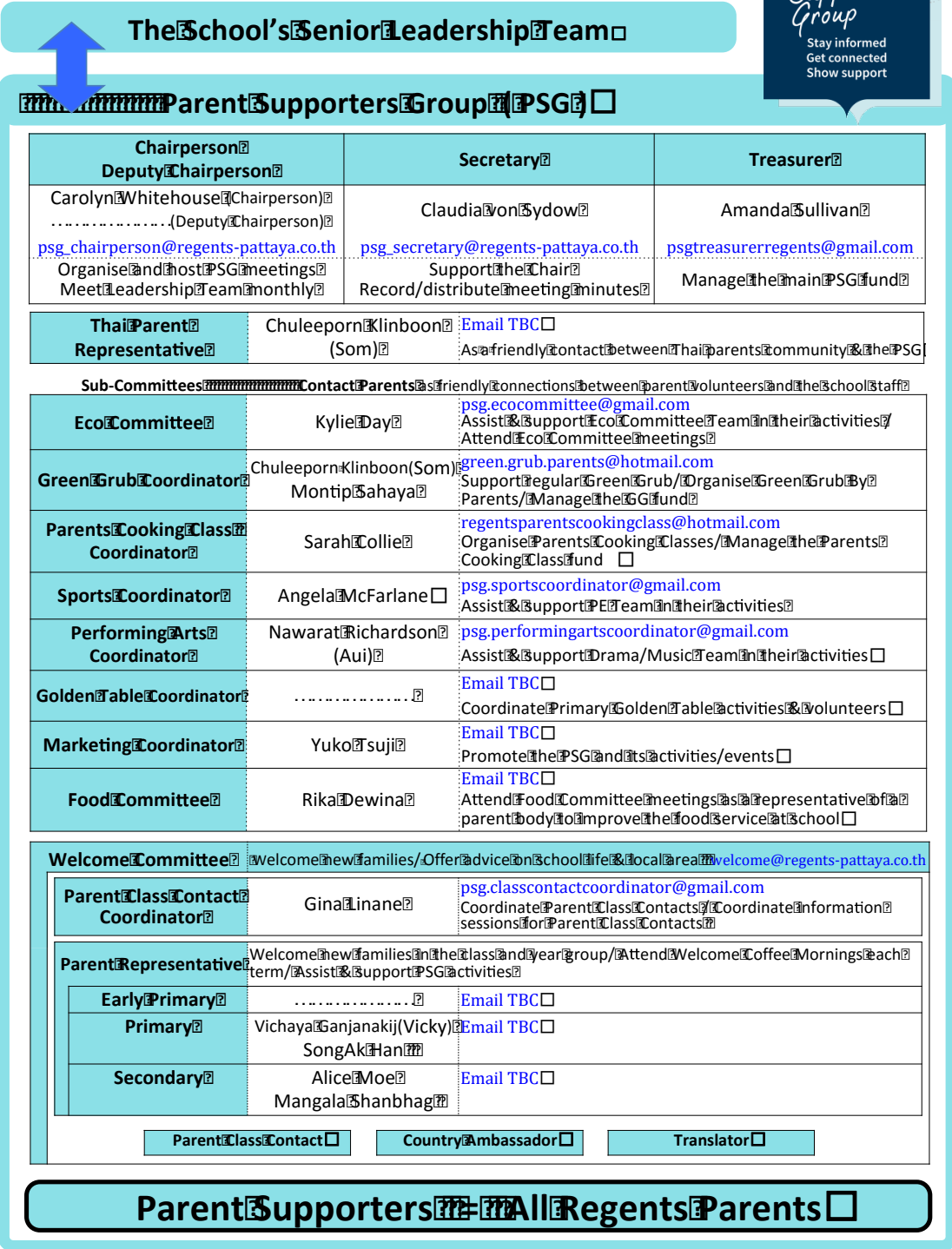
- The PSG is always welcoming parent volunteers such as Country Ambassadors, Translators and General Volunteers. If you are interested, please contact the PSG Secretary at [psg\\_secretary@regents-pattaya.co.th](mailto:psg_secretary@regents-pattaya.co.th)

**14. Contact**

PSG Chairperson [psg\\_chairperson@regents-pattaya.co.th](mailto:psg_chairperson@regents-pattaya.co.th)  
PSG Secretary [psg\\_secretary@regents-pattaya.co.th](mailto:psg_secretary@regents-pattaya.co.th)  
Informal Facebook page <https://www.facebook.com/groups/333805723471348/>



**PSG ORGANISATIONS 2018-19** (As of 5th June 2018)



Blue = Response to PSG  
Red = Need from PSG  
Green = Need from School