



Welcome  
to Regents

You want the best for  
your child. So do we.



REGENTS INTERNATIONAL SCHOOL  
PATTAYA  
A NORD ANGLIA EDUCATION SCHOOL

*Be Ambitious Be Regents*





## Welcome to our school



Welcome to Regents International School Pattaya, an exciting, vibrant school that has something to offer every child and every family.

This year we are celebrating 25 years as the most successful school on the Eastern Seaboard, during which time we have developed an excellent reputation for providing exciting learning experiences for all of our students, in an inclusive and caring community. As part of the Nord Anglia Education family we transform learning beyond the traditional through our collaborations with the Juilliard School of Performing Arts in New York and the Massachusetts Institute of Technology (MIT). We are also very proud to be a Round Square school which supports our belief in providing an all round holistic education for our children.

We are an inclusive school that continues to celebrate consistently

high academic results, above the world average, with the prestigious International Baccalaureate Diploma and IGCSEs. Our students go on to attend some of the best universities around the world but, perhaps more importantly, we help them to achieve their first choice university with whatever subject they choose to go on to study.

We believe our children succeed when they are cared for, challenged and have opportunities to apply their learning. We offer engaging learning environments with the most talented teachers who believe there are no limits to what your child can achieve.

Choosing the right community and learning environment for your child is an important decision. We hope you agree that Regents is not only a fabulous school but also the right school for you and we look forward to welcoming you into our family.

*Be Ambitious Be Regents*

Sarah Osborne-James  
School Principal

Follow us on





You want the best  
for your child.  
So do we.

## *Nord Anglia Education*

### **Be Ambitious**

All Nord Anglia Education schools are driven by one unifying philosophy – we are ambitious for our students, our people and our family of schools. Our schools deliver a high quality education through a personalised approach enhanced with unique global opportunities to enable every student to succeed.

### **Learn from the best**

We know the difference that great teaching makes to your child's success at school. That's why Nord Anglia has developed a unique approach to teacher recruitment, training and support that ensures your child learns from the best. Nord Anglia also partners with world-leading organisations to ensure that the curricula and initiatives we offer are second to none. Our performing arts curriculum is developed in collaboration with The Juilliard School, the world leader in performing arts education based in New York. Our STEAM curriculum is also developed in collaboration with MIT and our students have even further opportunities through our collaboration with UNICEF.

### **Global Community**

We enrich your child's learning experience with opportunities beyond the ordinary. From online debates and challenges, to expeditions to the savannah of Tanzania or performing in our Global Orchestra in New York, Nord Anglia's Global Campus connects our students around the world to learn together every day.

### **Success for every student**

Our families academic results are testament to this approach, with one in three Nord Anglia Education students going to the world's top 100 universities. And for Nord Anglia schools, academic success is just the beginning. We will nurture your child's talents so that they can succeed in every aspect of their education, from sports to arts, languages or technology. We encourage every student to love learning, to try something new and, above all, to be ambitious.



# Learning Opportunities Beyond the Ordinary

Through our collaborations we think beyond traditional education to transform learning.

## Juilliard School of the Performing Arts

The Performing Arts are creative keys that can unlock our students' imagination and significantly transform their education. They contribute to the development of the skills our students will need in the future both in terms of employment and their personal success and happiness. Research clearly links the study of the Performing Arts to improvements in creativity and innovation, self-confidence and presentation skills, self expression, empathy and compassion, cultural awareness and appreciation, physical and personal development and higher academic achievement.

# Juilliard

## Massachusetts Institute of Technology (MIT)

To succeed in the future our children must learn how to think, not what to think. Our collaboration with MIT is designed to prepare students for our rapidly evolving world, equipping them with the skills and techniques to thrive. Through hands-on, interdisciplinary learning of STEAM subjects (science, technology, engineering, art and maths), your child will develop the transferable skills needed to invent the future they will ultimately inherit.



## Round Square - A world of adventure

A Round Square school must demonstrate how the six IDEALS (internationalism, democracy, environmental awareness, adventure, leadership and service to the community) are offered to its students through different areas of educational practice. As the only Round Square and Nord Anglia School in the area, we are privileged to have an extensive outdoor education programme with both national and international expeditions for our children. We are extremely proud of the life changing opportunities these provide. They challenge your child to take learning outside of the classroom, open their eyes to world issues and give them the hands on opportunities to make a difference and positive contribution to our world.

## Exchange Programmes

Thanks to our membership of the Round Square organisation, we are very lucky to have the opportunity to offer exchanges to a range of schools around the world. The students involved get the chance to spend an extended time studying at other schools, sharing cultural experiences and living with a host family. On their return, they are then encouraged to host a student from the school they visited, and welcome them into our Regents community. The learning opportunities from this are immeasurable, with students gaining cultural, international and emotional experiences that are invaluable as well as a broader outlook on the world around them.

## Our Gap Staff Programme

Another unique benefit to our Students is the Gap programme that we run here at Regents. We employ young people, mainly from other Round Square schools, who are in between school and university to come and be part of our community and undertake long term placements with us where they can experience what it is like to work in an International School. The Gap staff get involved with all aspects of life at Regents and act as role models for our students, as well as valued members of staff in all aspects of school life. As alumni of a Round Square school, Regents students can also participate in the gap programme; this gives them access to 170 schools worldwide where they can gain real world experience in the work place, independence before heading to university and explore a new part of the world, remaining part of the Round Square family even after their time at Regents has come to a close.





*Academic success and  
memories to last a  
lifetime*

## *Boarding at Regents*

Boarding at Regents provides a supportive environment with caring staff, fantastic facilities, friends to be made and times to enjoy. The outstanding range of learning opportunities and new environments to discover in Thailand and in South East Asia make the boarding experience here so much richer and better value-for-money when compared with boarding schools in the UK, Western Europe and North America. Our boarders are encouraged to work hard and to play hard – whilst they will be encouraged towards independence they will also know that they have our staff's full support as they grow.

Boarding is available for students from Year 3 (8 years old) and the options are very flexible with occasional boarding, part-time boarding and full-time boarding. If you would like to try boarding as an option for your child we also have taster sessions available. There is an extensive range of activities arranged for our boarders, at weekends and evenings, giving them the opportunity for new experiences and building life-long friendships. Academic support is also provided each day with supervised study sessions part of the daily routine; one of the biggest advantages of boarding for your child.





## English Language Acquisition



Regents takes pride in having a linguistically diverse population. We know that some students join us with native English fluency whilst others join with very little or even no English at all. Regardless of students' English level, we are committed to supporting their success.

Our experienced English as an Additional Language (EAL) team offers individualised support plans within both the Primary and Secondary schools as based on students' age, English level, and educational goals.

Our EAL programme applies the most sophisticated research-based practices to help our students acquire English language skills. Our approach is to provide a supported immersion setting where students have the opportunity to interact with their peers and learn year level content and skills.

We know that students learn best when they are in an inclusive environment alongside English speakers and with the support of our EAL professionals. With this approach, students are included and connected with their classmates, learn year level content and skills, and learn English at an accelerated rate.

*There is more  
in you than  
you think*



# Modern Foreign Languages

Here at Regents we really value Internationalism and Diversity. As such we offer all our students the opportunity to learn another language in addition to English.

## Thai Studies

All our students from Nursery to Year 9 study Thai Language and Culture. We have two courses in Thai: Thai for Thai students, which is a first language programme and compulsory for all our students of Thai nationality. It is also an option for half Thai or non-Thai students providing they have the appropriate level of spoken Thai to engage with the course. For our non-native Thai speakers we have a Thai for All programme, which is a Thai beginner's class that focuses on spoken communication and cultural understanding, as well as introducing the Thai alphabet and phonics. In Years 10 and 11 we offer Thai IGCSE first language as one of the IGCSE options. At IB Diploma level, Thai is currently available for study as a first language (Language A).

## Modern Foreign Languages

We also offer a choice of classes in Spanish, French and Mandarin Chinese to all our non-Thai students. Our Modern Foreign Languages (MFL) programme begins in Year 3 where students study each language for one term to get a 'taster' for each language. At the end of Year 3, families are asked to choose their preferred language and, from Year 4 onwards, students continue to study their language of choice. Students are encouraged to keep studying their chosen language right through to IGCSE level and then subsequently into their IB Diploma programme as Language B. For students who join the school later, we offer a Spanish beginners IGCSE class in Year 10 and 11 for those with no prior experience and, at Diploma level, we offer Ab Initio (from scratch) courses in French, Spanish or Mandarin, depending on the demand from students.

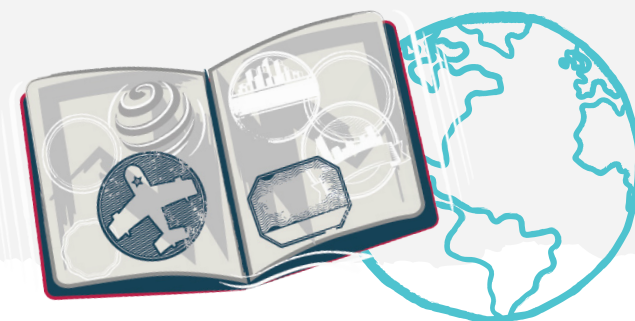
If we have sufficient demand from parents, we will be happy to open classes in Mandarin Chinese for Thai Primary students from Years 1-6.

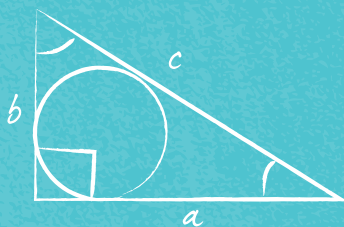


## Home Languages

Home languages (mother tongue) are very important and we recognise the role that promoting the use of home languages can have on the overall cognitive development of children. We currently offer optional Korean first language classes to all of our Korean first language students from Years 4-13. Russian first language is available as an IGCSE option and as Language A at Diploma level. This year we are happy to announce that we have also opened classes in Mandarin Chinese first language in Year 9,10 and 11. With such a varied and international school community, with over 50 different nationalities represented, unfortunately we cannot offer teaching in every home language, but we endeavour to support home language learning wherever possible. For example, we currently have a native Chinese teacher supporting Chinese students in science, our German Gap staff are planning a German cultural CCA to be launched later in the year and we have a first language French club run by one of our teachers, supported by parents.

At Diploma level we have a great deal of flexibility for our bilingual students to study their own native language and have that recognised as part of their Diploma. There is a wide range of options including students following a self-taught language programme, which is supported by a teacher-mentor or studying for the Bilingual Diploma. More information about these options is available from our IB Co-ordinator, Sara Morrow.





## Advanced Learners

At Regents, we pride ourselves on being an inclusive school however, as our outstanding IGCSE and IB Diploma results show, many of our students achieve more than they thought possible. We focus on the attributes and mind-set that will enable a student to become an advanced learner:

- they are encouraged to be self-starters and highly motivated both inside and outside of the classroom
- they ask searching and challenging questions
- they use feedback to reflect on what they have learnt and the skills that they are developing
- they actively seek out opportunities to develop their thinking and understanding further

In addition, our focus on the Performing Arts provides a setting for improvisation, the confidence to create and to take risks within an enabling environment. Your child may be a future CEO, Professor or international Ambassador, so the communication, confidence and presentation skills they learn through the Performing Arts curriculum are vital to their future success.

We provide many opportunities for advanced learners to push themselves further through our MIT and Juilliard collaborations, the Federation of British International Schools in Asia (FOBISIA) challenges, student leadership and NAE's Global Campus where students can compete with students from around the world in creative writing, visual arts, debating, Model United Nations and many other disciplines.

Children are encouraged not to put a limit on their capabilities and, rather than being praised for attainment, are valued for their effort and tenacity. These days universities no longer look at only academic abilities, they are looking for students who show resilience, perseverance and the ability to overcome obstacles. Here at Regents we help your child to prepare for this. The STEAM (science, technology, engineering, art, maths) approach means children are encouraged to problem solve, think across the traditional curriculum subjects and develop a mind-set where everything is possible. Teachers plan learning experiences that include challenge as an integral part of each session and activities are differentiated to ensure that each child is stretched.



## Academic Success



Our educational approach enables every student to reach high levels of academic and social success. We offer rigorous and compelling curricula which are respected by the world's top universities, and encourage critical thinking, teamwork and leadership.

Our students not only succeed while they are at school, but the courses they study lay the foundations for future success at the next level too. Taking IGCSE examinations followed by the IB Diploma Programme is a highly regarded route to universities and colleges around the world. The IB Diploma Programme is recognised as the most prestigious worldwide pre-university award.

### Age 14 - 16: IGCSE

In Year 10 and 11, our students study to achieve the International General Certificate of Secondary Education (IGCSE) qualification, developed by Edexcel and Cambridge Assessment International Education.

### Age 16+ : IBDP

Regents International School Pattaya has offered the International Baccalaureate Diploma Programme (IBDP) for 16 years, consistently delivering results well above the world average.



# International Baccalaureate Diploma Programme



A key decision for students heading into Sixth Form is which route to take in order to have access to a wide range of opportunities at university and beyond. The International Baccalaureate Diploma Programme is one of the most exciting and rigorous academic programmes for students in Year 12 and 13, found in leading schools across the world.

In contrast with some other programmes (e.g. A levels), DP students take six subjects, three at higher level, and three at a standard level: these must include maths, at least one science, one humanities subject, English language and literature (or the student's own native language) and a foreign language.

What sets the DP apart from other qualifications however, is how it provides students with so many of the additional skills top universities are looking for. The Theory of Knowledge module looks at how we know what we know. For the extended essay students write a research-based 4000-word essay which is great preparation for their university applications. In addition, students carry out a series of activities relating to Creativity, Action and Service (CAS), which helps them to develop stronger interpersonal skills, broaden their experience and become truly global citizens. This could include learning a musical instrument, trekking through Nepal or teaching at community partner schools. This means that at university or job interviews in the future, IBDP students have far more experiences that they can actively demonstrate than their counterparts from other programmes.

The DP is recognised and respected by the world's leading universities, and evidence suggests DP students have a significantly greater likelihood of earning a first class honours degree and improved job prospects.

**Regents International School Pattaya has offered the International Baccalaureate Diploma Programme (IBDP) for the past 16 years with our students consistently achieving results well above the world average. This academic success provides the best opportunities for our students and their future studies at some of the best universities in the world.**





IGCSE Results  
(3 year average)

40%  
A\*/A

85%  
A\*-C

21% UK  
A\*/A Average

IBDP Results  
(3 year average)

41 HIGHEST  
POINTS

32 AVERAGE  
POINTS

29.8 GLOBAL  
AVERAGE

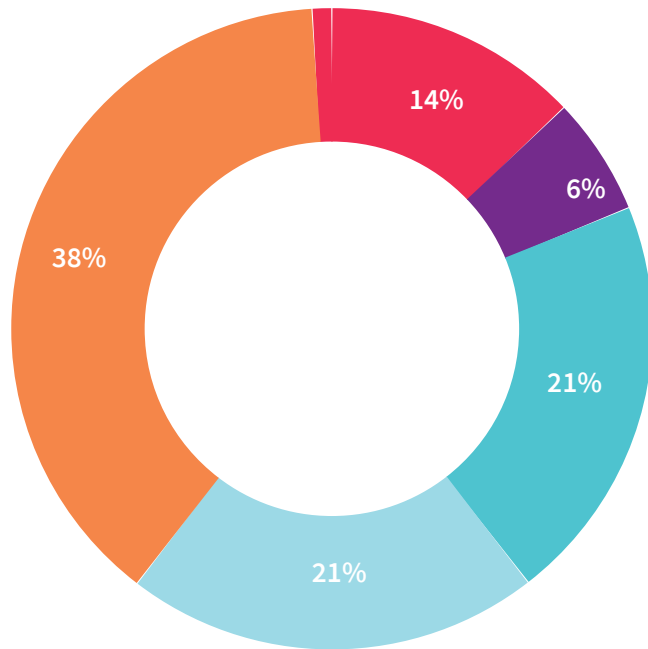
No limits  
to what your child  
can achieve





# University Destinations

Our students are well prepared to move on to study a variety of academic disciplines at prestigious universities across the world. See below our University destinations from 2015-2019 in percentages.



UK Asia Europe North America Australasia

## United Kingdom

- University of the Arts London
- University of Bangor
- Bournemouth University
- University of Brighton
- University of Chester
- University College London (UCL)
- University of Durham
- University of Edinburgh
- University of Exeter
- University of Glasgow
- University of Hertfordshire
- Kings College London
- University of Leeds
- Leeds Art College
- Leeds Beckett University
- Manchester Metropolitan University
- University of Manchester
- Newcastle University
- University of Nottingham
- Nottingham Trent University
- Oxford Brookes University
- Queen Mary University of London
- University of Reading
- Rose Bruford College of theatre and Performance
- Royal Holloway University
- University of Sheffield
- University of Sussex
- Swansea University
- University of Warwick
- University of Westminster
- University of the West of England
- University of Winchester

## Europe

- Zealand institute of Business and Technology
- American University of Paris
- Bonn/Köln University
- International School of Management
- Fonty's University of Applied Sciences
- RWTH Aachen University
- Eindhoven University of Technology
- Erasmus University Rotterdam
- EU Business School
- Leiden University
- University of Maastricht
- Tilburg University
- Vrije Universiteit Amsterdam
- Cardinal Herrera University
- Business and Hotel Management School
- Les Roches International Hotel Management School
- Delft University of Technology
- University of Groningen
- Moscow State Institute of International Relations
- University of Debrecen

## North America

- Academy of Art University
- Douglas College
- University of California
- University of Colorado Boulder
- Hult International Business School
- Los Angeles Film School
- Michigan State University
- Otis College of Art and Design
- Purdue University
- Ryerson University
- San Francisco State University
- South Alberta Institute of Technology
- University of Toronto
- Ventura Community College
- University of Western Ontario

## Asia

- Beijing Language and Culture University
- Hong Kong University
- University of Gadjah Mada
- Sri Venkateswara College of Engineering
- Taylor's University
- Ateneo de Manila University
- Dongguk University
- Korea Advanced Institute of Science and Technology
- Korea University
- Yonsei University
- Chulalongkorn University
- Mahidol University
- Nagoya University of Commerce & Business
- SAE Institute Bangkok
- Silpakorn University International College
- Thammasat University
- Tsinghua University

## Australasia

- Curtin University
- Edith Cowan University
- Melbourne University
- Monash University
- University of Queensland
- Griffith University Australia
- SAE Auckland
- University of Auckland

Some examples of our students' university destinations



## Co-Curricular Activities (CCA)

At Regents International School Pattaya we understand the importance of learning and having fun outside of the classroom. With this in mind we have developed a comprehensive and diverse CCA programme to support your child's continued development, both academically and as a global citizen.





# Applying to Regents

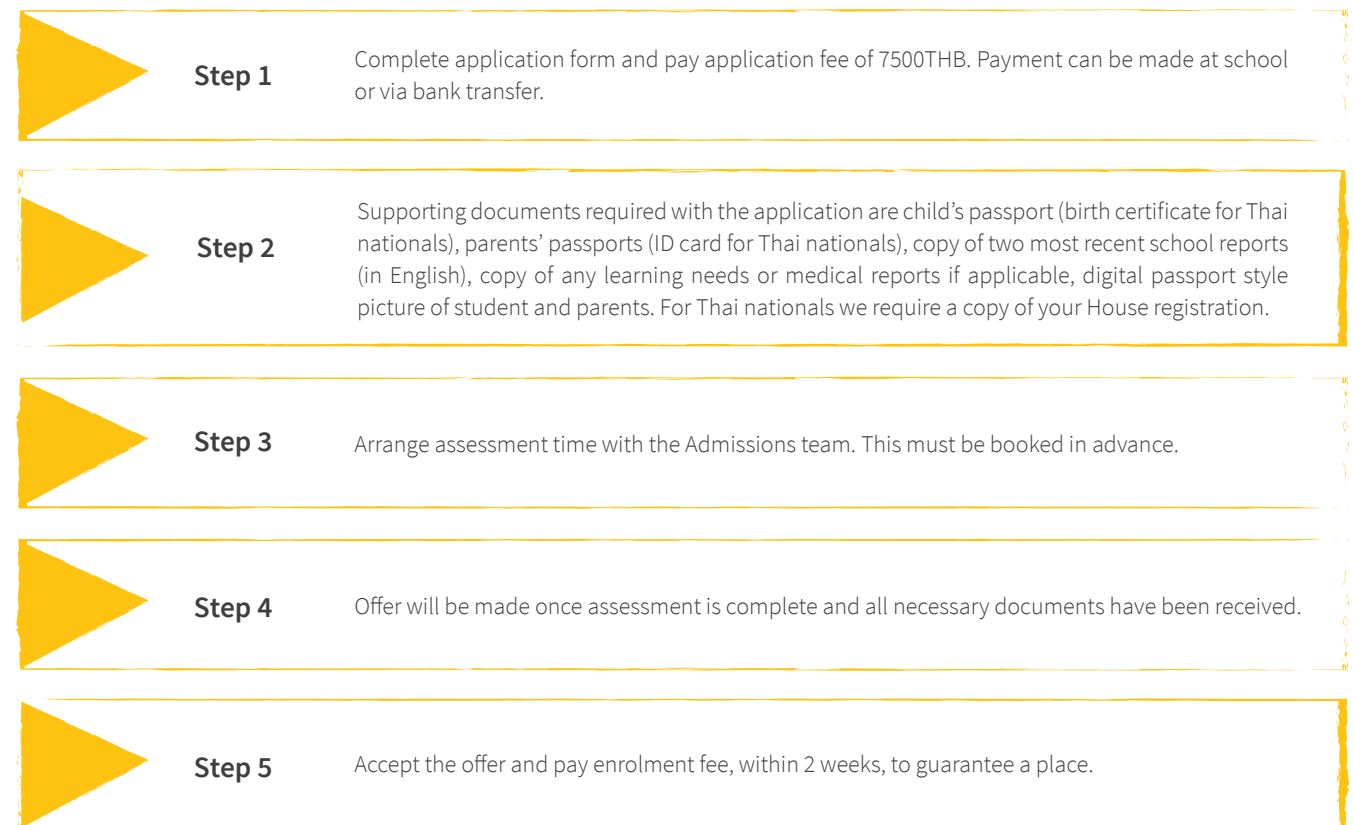
We encourage you to visit the school and you are welcome at any time. If you can, please book a time with us in advance so we can make sure that you can meet key members of staff on the day. Just contact our Admissions team and they will set everything up for you. [admissions@regents-pattaya.co.th](mailto:admissions@regents-pattaya.co.th)

## Assessments

We are a non-academically selective school but we do carry out an initial assessment to ensure suitable placement and English as an Additional Language (EAL) support.

- Early Primary: up to 60 minute “taster” session in the classroom
- Primary: verbal and written appraisal and assessment of English language ability to allow us to determine the level of English as an Additional Language (EAL) support required
- Secondary: cognitive ability test, assessment on English language ability and interview with Head of Secondary
- Year 12 applications: in addition to our Secondary school assessments, students applying to join our International Baccalaureate Diploma Programme must have a minimum of five IGCSE at grades A\* to C, or equivalent.

## How to apply for a place at our school



# Year Group Placement (2019/2020)

Children are placed in the year group according to their date of birth.

|  | Date of Birth       | Age in 2019-20 | Regents Class Placement (UK) | USA / Canada | Thailand       |
|--|---------------------|----------------|------------------------------|--------------|----------------|
| <b>Early Primary</b>                         | 31.08.16 - 30.08.17 | 2 - 3          | Pre-Nursery                  | Pre-Kinder   | Tream- Anubaan |
|  | 31.08.15 - 30.08.16 | 3 - 4          | Nursery                      | Pre-Kinder   | Anubaan 1      |
|  | 31.08.14 - 30.08.15 | 4 - 5          | Reception                    | Pre-Kinder   | Anubaan 2      |
| <b>Key Stage One</b>                         | 31.08.13 - 30.08.14 | 5 - 6          | Year 1                       | Kindergarten | Anubaan 3      |
|  | 31.08.12 - 30.08.13 | 6 - 7          | Year 2                       | Grade 1      | Pratom 1       |
| <b>Primary School/<br/>Key Stage Two</b>     | 31.08.11 - 30.08.12 | 7 - 8          | Year 3                       | Grade 2      | Pratom 2       |
|  | 31.08.10 - 30.08.11 | 8 - 9          | Year 4                       | Grade 3      | Pratom 3       |
|  | 31.08.09 - 30.08.10 | 9 - 10         | Year 5                       | Grade 4      | Pratom 4       |
|  | 31.08.08 - 30.08.09 | 10 - 11        | Year 6                       | Grade 5      | Pratom 5       |
| <b>Secondary School/<br/>Key Stage Three</b> | 31.08.07 - 30.08.08 | 11 - 12        | Year 7                       | Grade 6      | Pratom 6       |
|  | 31.08.06 - 30.08.07 | 12 - 13        | Year 8                       | Grade 7      | Matayom 1      |
|  | 31.08.05 - 30.08.06 | 13 - 14        | Year 9                       | Grade 8      | Matayom 2      |
| <b>Secondary School/<br/>IGCSE</b>           | 31.08.04 - 30.08.05 | 14 - 15        | Year 10                      | Grade 9      | Matayom 3      |
|  | 31.08.03 - 30.08.04 | 15 - 16        | Year 11                      | Grade 10     | Matayom 4      |
| <b>Sixth Form / IBDP</b>                     | 31.08.02 - 30.08.03 | 16 - 17        | Year 12                      | Grade 11     | Matayom 5      |
|  | 31.08.01 - 30.08.02 | 17 - 18        | Year 13                      | Grade 12     | Matayom 6      |

# Our Students

## Class Sizes

Pre-Nursery: 16 children



Nursery and Reception: 18 children



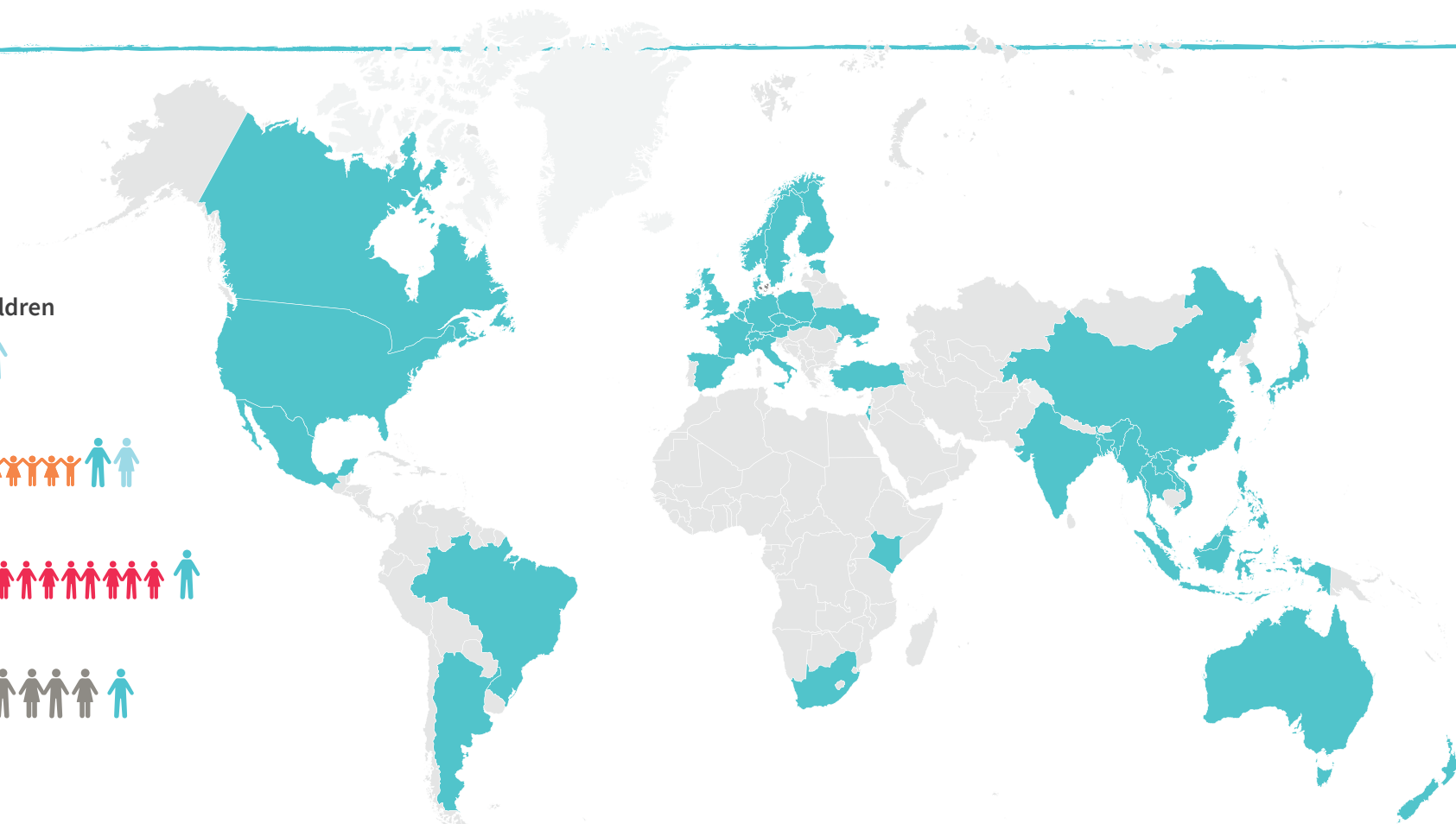
Year 1 - Year 6: 22 students



Year 7 - Year 11: 24 students



Year 12 - Year 13: 16 students



## Our Students

Regents International School Pattaya is an international school in the truest sense, with more than 50 different nationalities represented in the student body. Our diversity results in part from our location on the Eastern Seaboard of Thailand, which attracts so many expat families alongside the local Thai community. Part of what sets us apart from most other schools is that we are also a boarding school, so we welcome students from countries not otherwise well-represented around Pattaya.

## Our Teachers

We are committed to ensuring that our students are taught by exceptional teachers and, as a Nord Anglia Education school, we are able to recruit the very best teachers from around the world. Our highly qualified teachers, all with relevant teaching degrees, are almost all native English speaker, with the exceptions being our Mandarin, Korean, Thai, French and Spanish language teachers who are native in their home languages. Appropriate class sizes ensure that our teachers spend quality time with your child, and provide

them with truly personalised learning to deliver on our belief that there are no limits to what your child can achieve. In addition, many of our classes are further supported by our well-trained Teaching Assistants, who work alongside the teachers to motivate, encourage and assist in the classroom, providing that extra level of attention to your children, and enriching the classroom environment even further.



August 2019  
September 2019  
October 2019  
November 2019  
December 2019

| MON | TUE | WED | THU | FRI | SAT | SUN |
|-----|-----|-----|-----|-----|-----|-----|
|     |     |     | 1   | 2   | 3   | 4   |
| 5   | 6   | 7   | 8   | 9   | 10  | 11  |
| 12  | 13  | 14  | 15  | 16  | 17  | 18  |
| 19  | 20  | 21  | 22  | 23  | 24  | 25  |
| 26  | 27  | 28  | 29  | 30  | 31  |     |
| MON | TUE | WED | THU | FRI | SAT | SUN |
|     |     |     |     |     |     | 1   |
| 2   | 3   | 4   | 5   | 6   | 7   | 8   |
| 9   | 10  | 11  | 12  | 13  | 14  | 15  |
| 16  | 17  | 18  | 19  | 20  | 21  | 22  |
| 23  | 24  | 25  | 26  | 27  | 28  | 29  |
| 30  |     |     |     |     |     |     |
| MON | TUE | WED | THU | FRI | SAT | SUN |
|     | 1   | 2   | 3   | 4   | 5   | 6   |
| 7   | 8   | 9   | 10  | 11  | 12  | 13  |
| 14  | 15  | 16  | 17  | 18  | 19  | 20  |
| 21  | 22  | 23  | 24  | 25  | 26  | 27  |
| 28  | 29  | 30  | 31  |     |     |     |
| MON | TUE | WED | THU | FRI | SAT | SUN |
|     |     |     |     | 1   | 2   | 3   |
| 4   | 5   | 6   | 7   | 8   | 9   | 10  |
| 11  | 12  | 13  | 14  | 15  | 16  | 17  |
| 18  | 19  | 20  | 21  | 22  | 23  | 24  |
| 25  | 26  | 27  | 28  | 29  | 30  |     |
| MON | TUE | WED | THU | FRI | SAT | SUN |
|     |     |     |     |     |     | 1   |
| 2   | 3   | 4   | 5   | 6   | 7   | 8   |
| 9   | 10  | 11  | 12  | 13  | 14  | 15  |
| 16  | 17  | 18  | 19  | 20  | 21  | 22  |
| 23  | 24  | 25  | 26  | 27  | 28  | 29  |
| 30  | 31  |     |     |     |     |     |

- Boarding houses open 4pm: Year 7, Year 12 and new boarders
- Boarding houses open 4pm: All boarders
- Boarding houses open 2pm: All boarders
- Boarding houses close 2pm
- Boarding houses close 6pm

January 2020  
February 2020  
March 2020  
April 2020  
May 2020  
June 2020  
July 2020

| MON | TUE | WED | THU | FRI | SAT | SUN |
|-----|-----|-----|-----|-----|-----|-----|
|     |     | 1   | 2   | 3   | 4   | 5   |
| 6   | 7   | 8   | 9   | 10  | 11  | 12  |
| 13  | 14  | 15  | 16  | 17  | 18  | 19  |
| 20  | 21  | 22  | 23  | 24  | 25  | 26  |
| 27  | 28  | 29  | 30  | 31  |     |     |
| MON | TUE | WED | THU | FRI | SAT | SUN |
|     |     |     |     |     | 1   | 2   |
| 3   | 4   | 5   | 6   | 7   | 8   | 9   |
| 10  | 11  | 12  | 13  | 14  | 15  | 16  |
| 17  | 18  | 19  | 20  | 21  | 22  | 23  |
| 24  | 25  | 26  | 27  | 28  | 29  |     |
| MON | TUE | WED | THU | FRI | SAT | SUN |
|     |     |     |     |     |     | 1   |
| 2   | 3   | 4   | 5   | 6   | 7   | 8   |
| 9   | 10  | 11  | 12  | 13  | 14  | 15  |
| 16  | 17  | 18  | 19  | 20  | 21  | 22  |
| 23  | 24  | 25  | 26  | 27  | 28  | 29  |
| 30  | 31  |     |     |     |     |     |
| MON | TUE | WED | THU | FRI | SAT | SUN |
|     |     | 1   | 2   | 3   | 4   | 5   |
| 6   | 7   | 8   | 9   | 10  | 11  | 12  |
| 13  | 14  | 15  | 16  | 17  | 18  | 19  |
| 20  | 21  | 22  | 23  | 24  | 25  | 26  |
| 27  | 28  | 29  | 30  |     |     |     |
| MON | TUE | WED | THU | FRI | SAT | SUN |
|     |     |     |     | 1   | 2   | 3   |
| 4   | 5   | 6   | 7   | 8   | 9   | 10  |
| 11  | 12  | 13  | 14  | 15  | 16  | 17  |
| 18  | 19  | 20  | 21  | 22  | 23  | 24  |
| 25  | 26  | 27  | 28  | 29  | 30  | 31  |
| MON | TUE | WED | THU | FRI | SAT | SUN |
| 1   | 2   | 3   | 4   | 5   | 6   | 7   |
| 8   | 9   | 10  | 11  | 12  | 13  | 14  |
| 15  | 16  | 17  | 18  | 19  | 20  | 21  |
| 22  | 23  | 24  | 25  | 26  | 27  | 28  |
| 29  | 30  |     |     |     |     |     |
| MON | TUE | WED | THU | FRI | SAT | SUN |
|     |     | 1   | 2   | 3   | 4   | 5   |
| 6   | 7   | 8   | 9   | 10  | 11  | 12  |
| 13  | 14  | 15  | 16  | 17  | 18  | 19  |
| 20  | 21  | 22  | 23  | 24  | 25  | 26  |
| 27  | 28  | 29  | 30  | 31  | 30  |     |

# Calendar 2019/20

- start of term: Year 7, Year 12 and new students
- start of term for all students
- end of term
- school holidays
- public holiday/ school closed
- terms and half term times
- summer school

# Our School Day

| Pre-Nursery - Year 1         | Year 2 - 6   | Secondary  |
|------------------------------|--|--|
| Start 8:20am / Finish 3:10pm | Start 8:20am / Finish 3:20pm<br><b>After-School Activities</b><br>Mondays and Thursdays<br>3:20 pm - 4:20 pm | Start 8:20am / Finish 3:20pm<br><b>After-School Activities</b><br>Mondays and Thursdays<br>3:20 pm - 4:20 pm |

## Early Primary Example Timetable

|    |               | Monday   | Tuesday  | Wednesday  | Thursday   | Friday   |
|----|---------------|--|--|--|--|--|
|    | 08:20 - 08:40 | Registration   | Registration   | Registration   | Registration   | Registration   |
| P1 | 08:40 - 09:20 | Physical Education   | Play led curriculum  | Music  | Play led curriculum  | Play led curriculum  |
| P2 | 09:20 - 10:00 | Play led curriculum  |  | Play led curriculum  | Swim   |  |
|    | 10:00 - 10:20 |  | Play led curriculum  |  | Play led curriculum  |  |
| P3 | 10:20 - 11:00 |  |  | Thai   | Play led curriculum  |  |
| P4 | 11:00 - 11:40 | Play led curriculum  | Thai   |  |  |  |
| P5 | 11:40 - 12:00 | Lunch  | Lunch  | Lunch  | Lunch  | Lunch  |
|    | 12:00 - 12:40 | Outside Play   | Outside Play   | Outside Play   | Outside Play   | Outside Play   |
| P6 | 12:40 - 15:10 | Sleep time for Pre-Nursery and Nursery or play led curriculum, songs + story | Sleep time for Pre-Nursery and Nursery or play led curriculum, songs + story | Sleep time for Pre-Nursery and Nursery or play led curriculum, songs + story | Sleep time for Pre-Nursery and Nursery or play led curriculum, songs + story | Sleep time for Pre-Nursery and Nursery or play led curriculum, songs + story |

*Primary Example Timetable*

|    |               | Monday  | Tuesday   | Wednesday                | Thursday             | Friday                |
|----|---------------|---|---|--------------------------|----------------------|-----------------------|
|    | 08:20 - 08:40 | Registration/Phonics  | Registration/Phonics  | Registration/Phonics     | Registration/Phonics | Registration/Phonics  |
| P1 | 08:40 - 09:20 | English   | English   | Topic                    | Thai                 | Assembly              |
| P2 | 09:20 - 10:00 | Music   |   | Swimming                 | Topic                | Topic                 |
|    | 10:00 - 10:20 | Break   | Break   | Break                    | Break                | Break                 |
| P3 | 10:20 - 11:00 | Modern Foreign Languages  | Reading   | Modern Foreign Languages | English              | Physical Education    |
| P4 | 11:00 - 11:40 | Maths   | Maths   | Maths                    |                      | Maths                 |
| P5 | 11:40 - 12:20 | Dance   |   |                          | Music                | Maths                 |
|    | 12:20 - 13:20 | Lunch   | Lunch   | Lunch                    | Lunch                | Lunch                 |
| P6 | 13:20 - 14:00 | Topic (e.g. Brainwave, Saving the world, Inventions that changed the world) | Topic (e.g. Brainwave, Saving the world, Inventions that changed the world) | English                  | Maths                | Integrated Technology |
| P7 | 14:00 - 14:40 |   |   |                          |                      | English               |
| P8 | 14:40 - 15:20 |   |   | Thai                     | Topic                | Topic                 |

*Secondary Example Timetable*

|    |               | Monday                | Tuesday             | Wednesday             | Thursday              | Friday                  |
|----|---------------|-----------------------|---------------------|-----------------------|-----------------------|-------------------------|
|    | 08:20 - 08:40 | Registration          | Registration        | Registration          | Registration          | Registration            |
| P1 | 08:40 - 09:20 | Secondary Computing   | Physical Education  | Secondary Science     | Secondary Music       | Secondary Art           |
| P2 | 09:20 - 10:00 |                       |                     |                       |                       |                         |
|    | 10:00 - 10:20 | Break                 | Break               | Break                 | Break                 | Break                   |
| P3 | 10:20 - 11:00 | Secondary Science     | Secondary Geography | Thai for Thai         | Secondary English     | Thai for Thai           |
| P4 | 11:00 - 11:40 |                       |                     | Secondary History     |                       |                         |
| P5 | 11:40 - 12:20 | Secondary English     | Secondary English   | Secondary Mathematics | Secondary Mathematics | Secondary Science       |
|    | 12:20 - 13:20 | Lunch                 | Lunch               | Lunch                 | Lunch                 | Lunch                   |
| P6 | 13:20 - 14:00 | Secondary English     | Secondary English   | Secondary Mathematics | Secondary Mathematics | Dance                   |
| P7 | 14:00 - 14:40 | Secondary Mathematics | Secondary Drama     | Secondary DT          | Thai for Thai         | Secondary Growing Minds |
| P8 | 14:40 - 15:20 |                       |                     |                       |                       |                         |



# Our Campus

**R** School Reception

**1** The Globe Theatre

**2** Primary Building

**3** Primary Playground

**4** Early Years Building and Playground

**5** Early Years / New Learners Pool

**6** Football Pitch and Running Track

**7** 25 Metre Swimming Pool

**8** Coffee Shop

**9** Languages and Sixth Form Building

**10** Secondary Building

**11** Football Pitch and Long Jump Pit

**12** Sports Hall

**13** Round House

**14** Astro Turf Football Pitch

**15** Drama Studios

**16** Girls' Boarding House

**17** Art Studios

**18** Boys' Boarding House

**19** Design and Technology Building



# Admissions and Tuition Fees 2019/20

## Application Fee

This one-time-only fee is payable at the time of application.

|                         |           |
|-------------------------|-----------|
| Entry to all yeargroups | THB 7,500 |
|-------------------------|-----------|

## Enrolment Fees

This non-refundable fee is payable on acceptance of an offered place at the school.

|                          |             |
|--------------------------|-------------|
| Pre-Nursery to Reception | THB 60,000  |
| Year 1 To Year 13        | THB 107,000 |

## Tuition Fee

| Year Group        | Term 1      | Term 2      | Term 3      | Full Year*<br>(incl. of 5% discount) |
|-------------------|-------------|-------------|-------------|--------------------------------------|
| Pre Nursery       | THB 133,200 | THB 99,900  | THB 99,900  | THB 316,350                          |
| Nursery/Reception | THB 157,800 | THB 118,350 | THB 118,350 | THB 374,775                          |
| Year 1 & 2        | THB 212,400 | THB 159,300 | THB 159,300 | THB 504,450                          |
| Year 3 to 6       | THB 221,400 | THB 166,050 | THB 166,050 | THB 525,825                          |
| Year 7 to 8       | THB 270,800 | THB 203,100 | THB 203,100 | THB 643,150                          |
| Year 9            | THB 277,600 | THB 208,200 | THB 208,200 | THB 659,300                          |
| Year 10           | THB 286,600 | THB 214,950 | THB 214,950 | THB 680,675                          |
| Year 11 to 13**   | THB 358,250 | THB 358,250 | -           | THB 680,675                          |

\*Annual fee must be paid before 12 July 2019 to qualify for the 5% discount.

\*\*Tuition fees for Years 11, 12 and 13 are to be paid in two equal instalments of THB 358,250 before Terms 1 and 2 commence. IGCSE and IBDP examination fees are billed as an additional amount in the second term of Years 11 and 13 respectively. The fees will be between THB 35,000 and THB 45,000 depending on your child's choice of subjects.

## School Lunch

Early Primary and Primary: Students are offered a choice of Western, Thai and Asian options. The cost of the Meal Plan is THB 12,300 for Term 1 and THB 9,200 for each of Terms 2 and 3. Secondary: The Secondary School lunch service operates as a 'food court', where students use their school ID card to pay for lunch.

## English Language Acquisition Programme (if applicable)

| Year Group | Term 1     | Term 2     | Term 3     |
|------------|------------|------------|------------|
| Primary    | THB 46,000 | THB 34,500 | THB 34,500 |
| Secondary  | THB 60,000 | THB 45,000 | THB 45,000 |

## Personalised Support Programme (if applicable)

| All Year Groups | Term 1     | Term 2     | Term 3     |
|-----------------|------------|------------|------------|
| Level 1         | THB 5,760  | THB 4,320  | THB 4,320  |
| Level 2         | THB 11,520 | THB 8,640  | THB 8,640  |
| Level 3         | THB 17,280 | THB 12,960 | THB 12,960 |
| Level 4         | THB 23,040 | THB 17,280 | THB 17,280 |
| Level 5         | THB 28,800 | THB 21,600 | THB 21,600 |

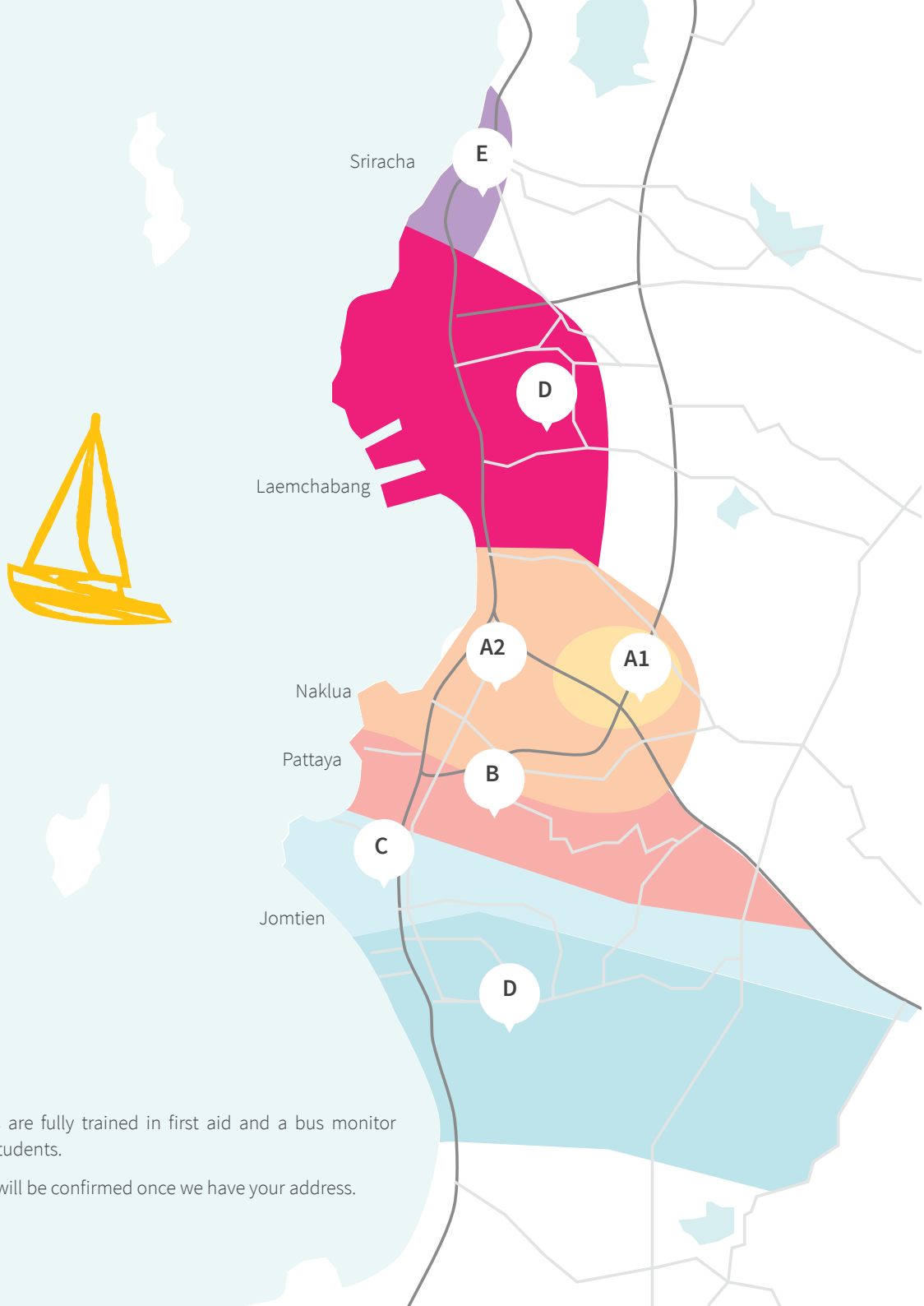
## Boarding Fees (if applicable)

| Year Group   | Term 1      | Term 2      | Term 3      | Full Year*<br>(incl. of 5% discount) |
|--------------|-------------|-------------|-------------|--------------------------------------|
| Year 3 to 13 | THB 156,600 | THB 117,450 | THB 117,450 | THB 371,925                          |

A retainer of THB 30,000 is required for all boarding students to cover incidental expenses. Parents will be asked to top up this fund as required. Any amounts remaining when the student leaves boarding will be refunded. The Boarding fee is inclusive of all meals, weekend trips, afternoon activities, laundry and 24-hour supervision from qualified staff.

\*Annual fee must be paid before 12 July 2019 to qualify for the 5% discount.





## Our School Transport

| Term 1   | Term 2     | Term 3     |
|--|------------|------------|
| <b>Zone A1: Nongketyai</b>                                   |            |            |
| THB 19,860   | THB 14,895 | THB 14,895 |
| <b>Zone A2: Naklua, North Pattaya, Rong Poh, Mabprachan</b>  |            |            |
| THB 25,920   | THB 19,400 | THB 19,400 |
| <b>Zone B: Nern Plab Wan, Central Pattaya, South Pattaya</b> |            |            |
| THB 28,040   | THB 21,030 | THB 21,030 |
| <b>Zone C: Burapha, Theprasit, Jomtien, Chaiyapreuk</b>      |            |            |
| THB 36,840   | THB 27,630 | THB 27,630 |
| <b>Zone D: Ocean Marina, Ao Udom, Laem Chabang</b>           |            |            |
| THB 42,840   | THB 32,130 | THB 32,130 |
| <b>Zone E: Sriracha</b>                                      |            |            |
| THB 47,760   | THB 35,820 | THB 35,820 |

All our bus drivers are fully trained in first aid and a bus monitor accompanies the students.

NB: Your bus zone will be confirmed once we have your address.



## How to pay

All fees are billed and payable in Thai Baht. Domestic payments may be made by crossed cheque or deposit/transfer directly to our accounts at any of the following three banks:



### **Bank Name: Bangkok Bank**

Account Name: Regent Pattaya Campus Management Co., Ltd  
Account Number: 342-4-57509-4  
SWIFT Number: BKKBTHBK  
Bank Branch: Banglamung branch

### **Bank Name: Krung Thai Bank**

Account Name: Regent Pattaya Campus Management Co., Ltd  
Account Number: 592-0-15111-0  
SWIFT Number: KRTHTHBK  
Bank Branch: Banglamung (Talad Na Klua)

### **Bank Name: Kasikorn Bank**

Account Name: Regent Pattaya Campus Management Co., Ltd  
Account Number: 321-2-60016-3  
SWIFT Number: KASITHBK  
Bank Branch: Banglamung (Talad Na Klua)

Please send a copy of the deposit slip to the school

by fax to: **+66 (0) 38 4 18 778**

or e-mail: **regents\_pattaya\_finance@regents-pattaya.co.th**

Thai personal cheques, cashiers cheques and bankers' drafts are accepted. These should be made payable to Regent Pattaya Campus Management Co., Ltd. We are unable to accept overseas cheques and bankers' drafts.

Receipts for payments by personal cheque will only be issued once the cheque has cleared. Please note that all bank charges, including intermediary bank charges are the responsibility of the transferor and will be deducted from the amount received. The school shall receive the full value of the invoice.

The school accepts payment by credit card (Visa, Mastercard) on certain conditions. Please note that for all credit and debit card transactions a 1.5% charge is levied.

*Opportunities  
beyond  
the ordinary*

# Our Signature Scholarships



We are delighted to invite students to apply for one of our prestigious Signature Scholarships, available for students whose passions lay in the arts, sports or those with exceptional academic abilities. Please find detailed information and application forms for download on our website at [www.nordangliaeducation.com/en/our-schools/pattaya/admissions/our-signature-scholarships](http://www.nordangliaeducation.com/en/our-schools/pattaya/admissions/our-signature-scholarships)

You must have secured a place at Regents as a student before applying for a scholarship.

## The Regents Lion Scholarship

The Regents Lion Scholarship is aimed at talented and emerging athletes who demonstrate the loyalty, passion and commitment to being a Regents Lion. They will demonstrate excellent team working skills, natural leadership, show unwavering ambition for themselves and their peers.



## The Kurt Hahn Scholarship

The Kurt Hahn Scholarship is awarded to young people who demonstrate they have a commitment to the Round Square. Kurt Hahn Scholars will have discovered and developed their own capabilities through a range of experiences, activities, collaborative projects and challenges, both within and outside the curriculum, including social service projects, exchanges and conference participation.



## International Baccalaureate Scholarship

The IBDP scholarship student is expected to be highly talented and academically ambitious, keen to participate fully in the life of the school and beyond the classroom, and an exemplary role model for both peers and younger students.



## The Performing Arts Scholarship

The Performing Arts Scholarship is awarded to those exceptional performers who can demonstrate their participation in a range of musical, dance or dramatic performances. Students with creativity, curiosity, and cultural literacy that engage with the performing arts throughout their lives are eligible.



visit our website here to find our more



## Good to know

### Accident Insurance

The school has accident insurance for students free of charge which covers them **up to THB 10,000** for medical expenses. There is no medical insurance coverage. **Parents must have their own medical insurance in place for their children before they will be allowed to attend school.**

### Sibling Discount

Sibling discounts are offered on tuition fees only where three or more children from the same family attend school. There is a 5% sibling discount for the 3rd child, 10% for the 4th and more. The percentage discount is applicable to younger siblings' tuition fees only.

### Annual Payment Discount

Where annual tuition fees and boarding fees for the academic year are paid in full prior to the first day of the academic year, a discount of 5% shall apply.

### Enrolment Throughout the Year

Discounts are given to those who enrol after the mid-term:

From start to Mid-term: no discount

From mid-term to three quarter term: 25%

Thereafter: 50%

### Methods of Payment

The school accepts payment by credit card (Visa, Mastercard) on certain conditions. Please note that for all credit card and debit card payments a 1.5% charge is levied.

### Notice of Withdrawal

Please note, as per our terms of business, withdrawal from the school requires **one full term's notice**. The school reserves the right to withhold any documents for departing students until all fees are settled in full.



### Key Contacts

Rhian Curtis, Admissions Manager

Nadia Fisher, Senior Admissions Coordinator

Jingwen Sun (Mary), Chinese Liaison Officer

**[admissions@regents-pattaya.co.th](mailto:admissions@regents-pattaya.co.th)**



## Parent Supporters Group

The members of the Parent Supporters Group (PSG) work together to provide a communication link between parents, teachers, and school administrators. An important part of their role in our community is to welcome and guide all new families joining and moving to Pattaya. As a new parent they will contact you to offer support and help put you in touch with other families from your home country.

We welcome parents into our school and value the contribution they make to our vibrant community. Parents are involved in many activities throughout the year helping us to celebrate festive occasions, charity events, cooking classes and supporting our students with many of their activities. We encourage you to get involved!



Parents Networking Group

### Emails

[regentspsgchairperson@gmail.com](mailto:regentspsgchairperson@gmail.com)

[regentspsgvicechair@gmail.com](mailto:regentspsgvicechair@gmail.com)

[regentspsgtreasurer@gmail.com](mailto:regentspsgtreasurer@gmail.com)



## Parent Supporters Group

stay informed  
get connected  
show support



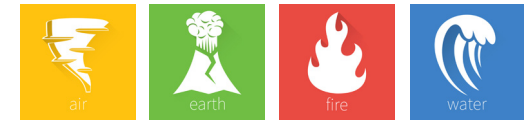
*Be Ambitious  
Be Regents*

## School Uniform

All students in Early Years, Key Stage 1, 2 and 3 are required to wear school uniform, as well as specific sports kits. Full details can be found on the school website.

Uniforms can be purchased from the uniform shop, located next to the Admissions Office in the Early Primary building. A full list of prices is available on request.

Every Friday we all wear our House t-shirts. You will receive your first House t-shirt free of charge when you join the school.



**Contact us**

Regents International School Pattaya  
33/3 Moo 1, Pong, Banglamung  
20150 Chonburi, Thailand

**Email**

[admissions@regents-pattaya.co.th](mailto:admissions@regents-pattaya.co.th)

**School Website**

[www.regents-pattaya.co.th](http://www.regents-pattaya.co.th)

**General Enquiries**

+66 (0) 38 418 777



**REGENTS INTERNATIONAL SCHOOL  
PATTAYA**

A NORD ANGLIA EDUCATION SCHOOL

*Be Ambitious Be Regents*