



THE BRITISH SCHOOL
YANGON
A NORD ANGLIA EDUCATION SCHOOL

SIXTH FORM PROSPECTUS

A Level Individualised Pathway 2021/22



Inspiring confidence, defining futures

CONTENTS

Welcome	
The Head of Secondary	03
The Head of Sixth Form	05
A Level Overview	07
Our Individualised Pathway	08
The Eclipse Programme	10
NAE Global Network	14
Careers and University Guidance	16
FAQ, Expectations and Life as a BSY Sixth Former	19

Subject Guide

Biology	22
Business Studies	25
Chemistry	25
Computer Science	27
Economics	28
English	29
Extended Project Qualification (EPQ)	30
Geography	33
History	34
Mandarin	35
Mathematics	36
Further Mathematics	37
Physics	38
Psychology	39
Enrolment	40







Welcome

THE HEAD OF SECONDARY

August 2020 will see the British School of Yangon Sixth Form open its doors for the very first time. The development of the Sixth Form has involved years of strategic planning and hard work. At BSY we believe that the Sixth Form is more than just a bridge between school and university – it is the zenith of the school experience and the time when our students truly forge their own path.

Our Sixth Form offer is designed to provide sixth formers with the best possible opportunities for personal growth via an individualised pathway - an academic core buttressed through a rich and diverse complementary curriculum, all enhanced by the Global Network unique to NAE schools.

We are proud of our broad and balanced curriculum that encompasses academic rigour, enrichment, extended learning, community outreach and leadership.

If you are a student with ambition to be the best you can be, or a parent ambitious for your child's future, then you will fit right in. As you read this prospectus we are certain that our 'offer' will inspire confidence and that the BSY Sixth Form will allow all of our students to build the futures that they aspire to. If you have any questions, please do not hesitate to contact the school.

I hope to see you in August 2020 to share in the exciting milestone of our Sixth Form opening.

Mr M. Gilberthorpe

Head of Secondary

“ The future belongs to those who believe in the beauty of their dreams.”

Eleanor Roosevelt





THE HEAD OF SIXTH FORM

When designing the KS5 curriculum at BSY we had a very clear, and strategic vision for Sixth Form success. This vision is embedded throughout our curriculum and forms our commitment to ensure every BSY Sixth Form student receives:

- Expert A Level teaching and learning
- Invigorating enrichment opportunities
- Inspirational pastoral, career and university support.

The result of this commitment is our unique and exciting '**Individualised Pathway**' - an academically challenging and holistically balanced programme of education that allows students to flourish physically, intellectually, emotionally and ethically whilst truly preparing and inspiring them for success at university and life beyond.

With small class sizes, individual attention, excellent teaching and first-class facilities, our students will excel. In addition, a BSY Sixth Former will become a leader, a team player, a communicator, a risk taker and a collaborator. In essence, an individual fully equipped to make their mark on the world as a global citizen and an ambitious, resourceful and confident young adult.

I look forward to welcoming you into our Sixth Form in August 2020 and starting an important journey together.

Mr J. Mycroft

Head of Sixth Form





A LEVEL OVERVIEW

A Level courses span two years

The chart below shows three possible assessment approaches. This will vary by subject and this is made clear in each of the subject guides in this document. Typically an AS Level is completed in one year, extended to an A Level in the second year (Option 2 below).

Option 1	Option 2	Option 3
AS Level (standalone AS)	A Level	A Level
	AS Level (AS is first half of A Level)	

If externally examined at the end of Year 12, students will receive an AS grade which will be recorded on their university application forms. If students are continuing any subjects onto A Level which are not examined at AS, then the grades on their university application forms will be recorded based on what their teachers expect them to achieve at the end of Year 13.

As a school we meticulously select the syllabuses that best suit our students. Subjects currently offer a syllabus from one of the following exam boards:

- AQA A Level
- Cambridge International A Level
- Edexcel International A Level
- Edexcel A Level.

Entry Requirements

These entry requirements are guidelines and we review each student's application on a case-by-case basis:

- Five (I)GCSEs at A* - C or grade 9 - 4
- A minimum of grade B or grade 6 at (I)GCSE in subjects you wish to take for A Level
- An A* or grade 9 in IGCSE Mathematics is necessary to take Further Mathematics A Level.
- Students wishin to study 4 A Levels must achieve an (I)GCSE average grade of 7.0 or above.

Some subjects may be accessible to students despite not having studied them before. This will be at the discretion of the school.

Assessment

Each subject that a student takes receives a separate grade. Grades are benchmarked using internationally recognised standards, with clear guidelines to explain the levels of achievement.

A Levels are reported on a grade scale from A* (highest) to E (minimum required performance). There is no A* grade for AS Levels which run from grade A to E.

OUR INDIVIDUALISED PATHWAY

The Sixth Form Curriculum at BSY is designed to provide every student with the opportunity to achieve their academic and personal best. It is a curriculum that is flexible and responsive to the needs of individual students and will allow them to access top universities and demanding careers throughout the world.

Our unique and exciting '**Individualised Pathway**' is an academically challenging and holistically balanced programme of education that allows students to flourish physically, intellectually, emotionally and ethically whilst truly preparing and inspiring them for success at university and life beyond.

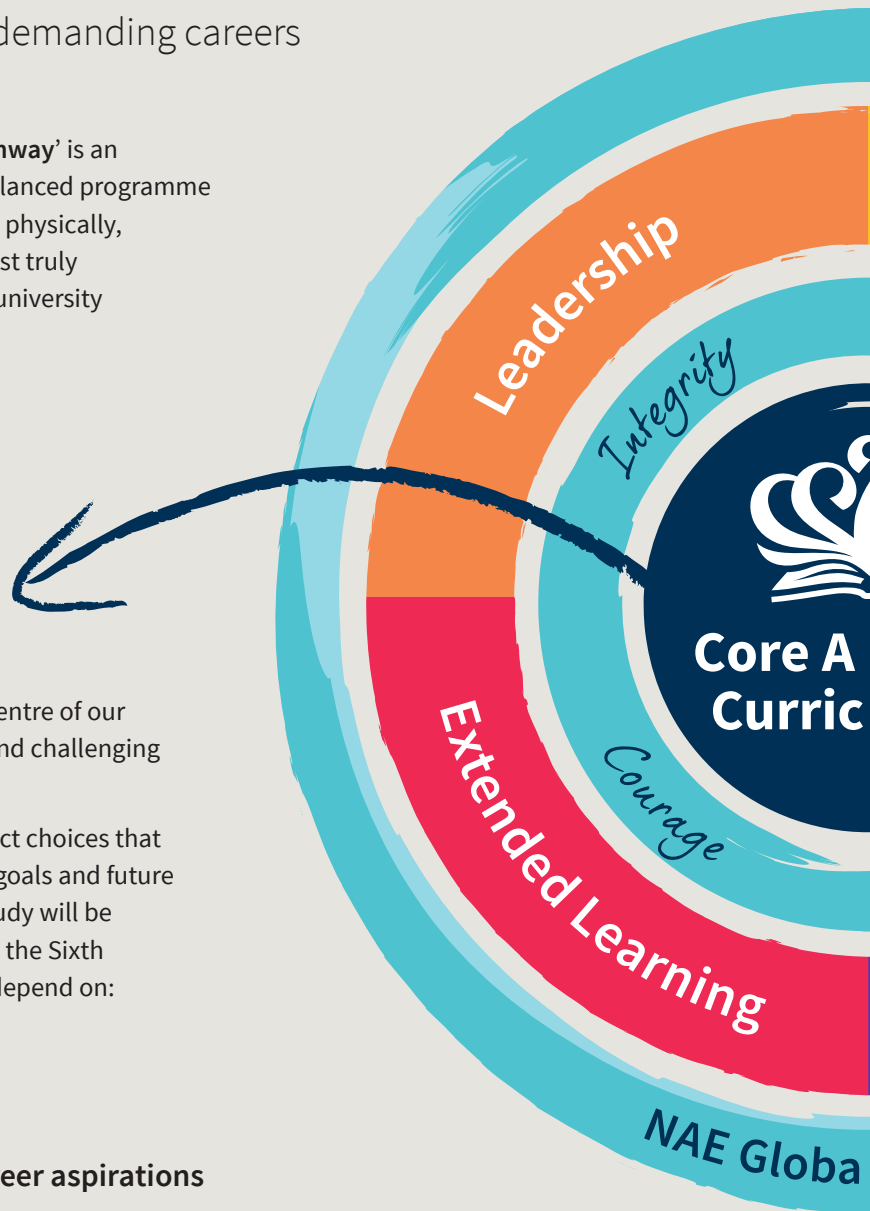
Academic Core

At BSY we place our A Level subjects at the centre of our Sixth Form curriculum to create a rigorous and challenging academic core.

Students will choose a combination of subject choices that are unique and individual to their interests, goals and future ambitions. Individualised programmes of study will be discussed with every student when they join the Sixth Form and their individualised pathway will depend on:

1. **Prior academic performance**
2. **Cognitive ability/potential**
3. **Students' university/subject/career aspirations**

Students will be timetabled for five lessons per A Level subject. All Sixth Form students will have to work hard if they are to be successful at A Level; to fulfil their potential they must be focused and committed as well as energetic and ambitious.





Values

At BSY we strive to promote our whole school values as well as habits that foster the development of independence and successful progression to higher education and beyond.

Our whole school values - Courage, Integrity, Kindness and Adventure - will permeate our Academic Core A-Level Curriculum and form the basis for our Complementary Curriculum.

Complementary Curriculum

THE ECLIPSE PROGRAMME

Alongside studying A Levels, BSY students will follow the Sixth Form Complementary Curriculum known as “The Eclipse Programme”.

The Eclipse Programme is an integral part of our Individualised Pathway and it is underpinned and driven by our whole school values.

Students will develop our school values through four complementary areas:

- **Enrichment**
- **Extended Learning**
- **Community Outreach**
- **Leadership**

This combination of experiences is bespoke to BSY students and tailored to suit our students’ needs, strengths and preferences with the aim of nurturing wellbeing, character, personal awareness and self-confidence within a challenging, vibrant and supportive environment.

NAE Global Network

When you become part of the Nord Anglia Education family, you also become part of a global network which connects students, alumni and career professionals from all around the world.



THE ECLIPSE PROGRAMME

The Eclipse Programme is our complementary curriculum at BSY Sixth Form. Through it students will develop our school values by engaging with four complementary areas: **COMMUNITY OUTREACH**, **ENRICHMENT**, **EXTENDED LEARNING** and **LEADERSHIP**. The Eclipse Programme will nurture wellbeing, character, personal and global awareness and citizenship in a challenging, vibrant and supportive environment.

The Eclipse Programme has two main aims: Firstly, it gives the students an edge so that they stand out from competition in the race for university places and competitive careers throughout the world. Secondly, it serves to push the students out of their comfort zone and facilitates the discovery of new passions, interests and desires whilst simultaneously serving to help the wider community.

Student Leadership Opportunities

We will continue to provide an ever-increasing number of student leadership positions. All students in the Sixth Form are eligible to apply to become Head Boy or Head Girl, Prefects and Ambassadors. These post-holders will play a key role in assisting staff and other students in the running of the school.

Leadership will permeate all aspects of the Eclipse Programme including, but not limited to, After School clubs, community work, the creative arts, The Duke of Edinburgh's International Award, the Extended Project Qualification, sport and well-being, and work experience.

Trips

Life in the Sixth Form will provide students with an opportunity to attend a variety of trips which will develop leadership, collaboration and cooperation skills. Our trips will include community service and outreach projects that create an excellent opportunity for our students to commit their time and skills to both local and global communities. We aim to develop leaders who understand how connected our lives are and who recognise that service to others helps improve our collective future. In addition to this, students will plan and undertake an initial bonding activity at the start of Year 12. This will be an adventure and service task that allows students to spend time getting to know each other whilst also learning and developing new skills.

The planning of Sixth Form trips will be led by students under the guidance of the Head of Sixth Form.

Extended Project Qualification (EPQ)

The EPQ for A-Level students is an in-depth piece of research which involves either producing an essay (5000 words) or a product and a report (1000 words). The aims of the EPQ are to develop students' skills in essential areas such as research, planning, analysis and evaluation. The development of these skills will help students with both their A-Level studies and their future studies at university. The EPQ is equivalent to half an A-Level, with an A* grade possible. This qualification is highly valued by universities.

Additional Language

Studying an additional language between the ages of 16 and 18 is beneficial for a variety of reasons, including the development of cultural capital and developing a broader understanding of the world. At BSY we feel that building this opportunity into our Sixth Form model is important as it allows our students to explore different cultures and globally significant topics through the study of a language other than English.

The study of additional languages is also viewed favourably by universities across the world who recognise its ability to broaden horizons and develop analytical knowledge and skills. We will provide the opportunity for all of our students to study and apply an additional language in a range of contexts all whilst studying for a recognised qualification in the form of an IGCSE.

Additional IGCSE

If studying an additional language is not to a student's tastes, then our programme is flexible enough to facilitate additional academic stretch through the study of a non-language IGCSE course. Due to the range that we are able to offer, this will add an extra dimension to the individualised pathway each of students follow and will again,

provide an 'extra string to their bow'.

Not only will students potentially secure an extra IGCSE and get to study an additional subject of personal interest, engaging in independent study whilst being supported by a teacher-supervisor means that students are given the opportunity to practise and refine key study skills required at university.

ASC's and Extracurricular

Students will continue to be offered opportunities to be involved in a wide variety of activities and services where they will learn, develop and teach new skills. This includes leadership and mentoring roles; sports clubs; the Duke of Edinburgh's International Gold Award; Model United Nations; community service; music groups; school production; FOBISIA events and much more.

Physical activity, sport and well-being

Physical Education will be different in BSY's Sixth Form. Students will continue to take part in regular and structured physical activity, sport, and health development - but with a much greater emphasis on well-being and the promotion of lifelong physical activity. Alongside more traditional sports, our students will also have the opportunity to take part in a range of health-related activities that enhance well-being such as yoga and exercise classes (HIIT, circuit training).

The sport and well-being programme at BSY will foster physical, moral, social, emotional, cultural and intellectual development to support our students' cognitive and academic performance. Through sport, our Sixth Formers will acquire a number of ethical character traits and transferable skills that one needs to be successful at university, thrive in a certain career and function in real world contexts.

Sixth Form students will also have the opportunity to represent the school in the U19 MISAC league and at tournaments throughout the city. There may also be opportunities for U19 sports tours to represent the school at competitions throughout Asia and beyond.

Creative Arts

BSY Sixth Form students will continue to have opportunities to engage with a range of creative arts. Our students may choose to explore personal interests such as acting, playing a musical instrument or creating an artefact. Sixth Form students will also play a prominent role in school productions and plays, assemblies, exhibitions and events. Regardless of A Level choice, our students will have a range of opportunities through which to gain experience in, and leadership of, areas of the creative arts as they continue the excellent work they began further down the school.

As a member of NAE we are also able to enrich this experience through our global collaborations with Julliard, with many related events and experience being accessed by our most senior students.

Duke of Edinburgh's International Award

The DoEIA is already offered to students in BSY's Key Stage 4 and will be extended upwards into our Sixth Form. Also known as The Head of State Award, The President's Award Scheme, The International Award for Young People, and the Governor General's Youth Award, the DoEIA is an amazing award that is internationally recognised, pushes students to their personal limits, recognises their efforts and increases their employability.

It encompasses four components - voluntary service, skills, physical recreation and adventurous journey - and has three levels of bronze, silver and gold. At the gold level there is also a Gold Residential Project, that "aims to broaden participants' horizons through involvement with others in a residential setting".

www.intaward.org/about-the-award

Community Volunteering

At BSY Sixth Form students will have the opportunity to take part in community based service projects. Students benefit greatly - both academically and personally - from volunteering their time to make the community and world a better place and in doing so, develop real-world skills such as leadership, problem-solving, collaboration, time management and communication. More importantly, when students commit their time and service to the community, they also return to the classroom realising how what they are studying applies to the real world. This in turn reinvestigates their passion for learning.

Work Experience

An important component of our sixth form experience includes careers based education and experience. This includes a variety of components such as career counselling, guidance and support, but also the opportunity for our students to experience the world of work through a work placement or internship. We view work experience as an opportunity to explore a chosen career path, all whilst developing real-world experiences and skills.

As we develop our internship programme all students will be expected to research opportunities, apply for and write a reflection piece on work shadowing, volunteering or paid vacation work undertaken with a variety of businesses.



NAE GLOBAL NETWORK

Whether it is advice from faculty experts in other schools, exploiting the positive relationships that we have brokered with the world's leading HE institutions, or simply carrying with you the confidence and emotional intelligence garnered through studying in a truly international environment, as a Nord Anglia Education student, you are uniquely placed to eclipse the competition.

We know that students in our schools outperform others academically, and we know that they will leave with far more than excellent grades; they leave us as part of the world's premium education family, ideally positioned to connect, innovate and succeed.

As a NAE school all of our Sixth Form students benefit from our collaborations with world renowned institutions: Julliard, the Massachusetts Institute of Technology (MIT) and UNICEF.

Julliard

Teaching and learning of the performing arts will be enhanced using a repertoire of core music, dance and drama works encompassing a wide range of genres, styles and cultures designed and hand-selected by Julliard, all used to supplement the A Level curriculum. Teachers will use Julliard Creative Classroom, an extraordinary online collection of educational resources that have been designed to enhance and supplement our performing arts curricula.

MIT

By tackling real-world challenges across the subjects of science, technology, engineering, art and mathematics (STEAM), our Sixth Form students will be required to display flexibility, creativity and communication. Using their foundational knowledge gained through their study of A Levels, students will be encouraged to experiment, and will learn that collaboration and critical thinking can solve complex problems.

UNICEF

In collaboration with UNICEF, BSY Sixth Form students will have their social consciousness raised so they care more deeply about the world and the people in it. Through the collaboration students research, develop and debate challenges facing our society, and take action to address them. Through special activities and events with UNICEF, Sixth Form students will be equipped to make their voice heard on the world stage and to make a lasting, positive difference.

In addition to these experiences every student receives comprehensive support in careers education, university applications and preparation for life beyond school to ensure they leave us as accomplished, self-assured young people equipped to lead highly successful international lives.



CAREERS AND UNIVERSITY GUIDANCE

Students can use AS and A Levels to gain places at leading universities worldwide including the UK, USA, Canada, Australia and across Europe and Asia.

BSY Students are supported by their tutors, teachers, a University and Careers Counsellor, the Head of Sixth Form, the Head of Secondary and the School Principal with applications to universities. As part of the Eclipse Programme, each student will receive university and careers education, information, advice and guidance. This will include support for university applications to the UK, USA, Australia and throughout Europe and Asia. Year 12 and 13 students also spend timetabled time with a University and Careers Counsellor. During these sessions, students are taken through the application processes and are taught key skills required to be successful at interview, when writing essays and when constructing personal statements.

Below is a list of support available to all students:

University Visits

We will receive representatives from universities around the world. Each year we will host presentations from universities from a variety of locations including the UK, North America and Australia.

Summer Courses

As the competition for places at top universities around the world increases, summer programmes (many held on university campuses) are becoming increasingly popular in providing students with invaluable experiences to help support their university applications. Each year we will arrange for speakers to come to school to present information regarding these courses. A comprehensive list of providers will be shared with parents.

Admissions assessments e.g. SATs/ACT, BMAT/UKCAT, LNAT, IELTS

Guidance will be given to students in preparing for these examinations when appropriate. One-to-

one support will be structured and timetabled as part of some tutorial sessions. Where additional or intensive support is required, this may need to be sourced by parents at their own cost. We may also recommend certain holiday, revision or private tutoring support where we believe there to be significant need.

University Applications

All students will receive one-to-one support in completing their university applications and writing their personal statements/essays. We believe this personalised service gives all of our students the best possible chance of obtaining offers at top universities around the world.

One-to-One Discussions

Parents and students are always welcome to contact the Head of Sixth Form or the Head of Secondary to arrange a one-to-one appointment to discuss any individual concerns or questions regarding IGCSE or A Level Programmes.

An overview of University application progression throughout the Sixth Form can be seen in the table below.

Year 11

- Students will begin preparing for Key Stage 5 in their PSHE lessons and through discussions with the Secondary Leadership Team
- University presentations at the Higher Education Fair
- Sixth Form Information and Subject Evening.

Year 12

- Register and complete some admissions tests including SAT/ACT
- Attend university presentations and careers fair
- Attend 1:1 career meetings
- Preparation for medical/dental/veterinary courses
- Preparation for other subject admissions tests
- Interview practice
- Start personal statements/ essays for university applications
- Undertake work placements.

Year 13

- Apply to university
- Sit subject admissions tests (BMAT, UKCAT, LNAT)
- Attend interviews
- Respond to offers
- Apply for scholarships
- Final examinations and results
- Prepare and plan accommodation and visas.

KEY FACTS

A Level Grades A* to A

39%



NAE average

26%



UK average



Nord Anglia students are admitted to the world's top 100 universities listed on the QS World University Rankings.



Our world-leading teachers deliver excellent academic outcomes.



FAQ, EXPECTATIONS AND LIFE AS A BSY SIXTH FORMER

In addition to the increased academic demand that KS5 study involves, life as a BSY Sixth Form will be uniquely different in a number of ways.

It is important to be transparent with the expectations of being a Sixth Former at BSY. This includes what we expect of our students; and also what students can expect from being a part of the Sixth Form at BSY.

The School Day

The school day remains the same for Sixth Form students. All students will register at 08:00 and must be in school until 15:00. Students must attend every lesson on their timetable, including independent study periods. Students will continue to eat lunch with the rest of the secondary school, acting as role models for our KS3 and KS4 students. Permission to leave the school site for lunch may be granted with parental consent - however, this is a privilege and may be removed if students do not meet expectations.

Dress Code

Sixth Form students are required to dress smartly and our expectations are similar to what one would expect in a formal business environment. Given the position of Sixth Form students as role models within the school, it is expected that their appearance is professional, smart and exemplary at all times. It is expected that they will follow published guidelines impeccably. Examples of formal business dress are provided below:

- Tailored suit with a formal button fronted collared shirt and tie
- Tailored skirt or smart tailored trousers with a jacket and smart, formal top, or a smart tailored dress. Skirts should be modest in length, approximately a maximum of 2 inches above the knee
- No tight trousers or tight/stretchy skirts are allowed
- Footwear must be formal and dark in colour. No trainers or canvas shoes
- No casual wear, beachwear, leathers, denim, trainers, military wear, sweatshirts, hoodies or baggy jumpers are permitted
- Make up and jewellery, where worn, should be subtle. No facial piercings are permitted
- Hair should be of a natural colour
- All students must follow the reasonable requests of staff with regard to appearance. Refusal to adhere to the Sixth Form Dress Code will be considered a breach of BSY rules.

Punctuality and Time Management

Students must attend all classes on time. Students will find that studying in the Sixth Form is a step up from IGCSE and they will need to take greater responsibility for their learning. Students' progress will still be monitored closely by their tutor, and students are offered support should they fall behind with work - it is essential though that all students do their best to adhere to work deadlines. This is particularly important for students undertaking any courses with an element of coursework/portfolio/personal investigation.

Tutor Time

Students thrive when they are provided with individualised, continuous and focussed pastoral support and guidance. As such, each student will be allocated an experienced tutor who will mentor them through their Sixth Form years. Time is dedicated to support the development of our students outside their subject areas. Year 12 will focus on preparation for university, study skills, leadership opportunities, planning summer internship/work experience placements, planning trips and starting to write their personal statements/ essays for university applications. Year 13 students will focus on completing their university applications and preparing for life beyond BSY.

Common Room and Study Areas

All students will have access to our purpose built Sixth Form common room where they will be able to spend their break and lunchtimes relaxing with their peers. In addition to the common room, all students will have access to an exclusive private study area during break time, lunch times, after school or study periods.

Academic Honesty

Students must exercise academic honesty in all aspects of their work and will receive sessions on this in their tutorial workshops. The penalties for academic malpractice in public examinations are severe and it is essential that students understand this from the outset.

Independent Learning

As with IGCSE, students must continue to take responsibility for their own learning.

Equipment

Students should have access to a laptop or tablet to support their studies.

Timetable

Whilst it is not possible to show here exactly what a student timetable will look like due to the personalised nature of each student pathway, in order to fulfil the Core A-Level Curriculum students will have 5 lessons per week for each subject. A total of 15 lessons for 3 subjects, or 20 lessons for 4 subjects.

In addition to subject lessons, students will also have 6 lessons per week timetabled for the Sixth Form Complementary Curriculum.

This is expected to include:

- 1 x Assembly / Careers lectures
- 1 x EPQ Workshop (if chosen)
- 1 x PSHE Futures workshop
- 2 x Sport and Well-being.

This will total 19 lessons per week for students studying 3 A-Levels or 24 lessons per week for students studying 4 A-Levels leaving between 11 and 6 lessons for individual study. During this time students are expected to be in school and to utilise the opportunity to study an additional IGCSE subject (if applicable) or to complete independent study/practice for their A Level courses. For the most part this time will be self-directed so students will need to plan their time wisely.

Whilst we will always endeavour to meet each student's subject choices, this may occasionally prove impossible due to timetabling constraints. Similarly, we would usually expect a minimum enrolment of 3 students for a course to run. As the A Level programme continues into Year 13 we may also combine Year 12 and 13 classes, particularly in the collaborative Arts subjects.

Subject guide

Making A Level course selections can be a daunting task. Look to your future, discuss your career or university study aspirations with your tutor, teachers or Mr Mycroft and discuss which A Level courses may be required or relevant in the fields you are considering. Think about which subjects you enjoy now and also consider new subjects offered in the Sixth Form.

BIOLOGY

Edexcel International AS and A Level in Biology. XBI11 and YBI11

The aims of the International Advanced Level in Biology is enable students to:

- Develop their interest and enthusiasm for Biology, including developing an interest in further study and careers in the subject
- To appreciate how society makes decisions about biology-related issues and how biology contributes to the success of the economy and society
- To develop and demonstrate a deeper appreciation of the skills, knowledge and understanding of how Science works
- To develop essential knowledge and understanding of different areas of biology and how they relate to each other.

Career and degree opportunities

Biologists equip themselves with a varied set of key skills that can be applied across a range of disciplines. Conservation biology, ecology, or environmental management place themselves at the forefront of global efforts to secure a prosperous future for the Earth and its inhabitants. Plant scientists, geneticists and molecular biologists might possess the skills to eradicate global hunger. In addition to this, doctors, nurses, clinical psychologists and pharmacologists address the everyday needs of the human population. You'll find biologists in classrooms, designing museum exhibits, publishing work in newspapers and on the radio and TV.

Syllabus outline

There are eight topics covered in the IAL Biology course that will cover knowledge, understanding and skills:

1. Molecules, Transport and Health.
2. Membranes, proteins, DNA and gene expression.
3. Cell structure, reproduction and development.
4. Plant structure and function, biodiversity and conservation.
5. Energy flow, ecosystems and the environment.
6. Microbiology, immunity and forensics.
7. Respiration, muscles and the internal environment.
8. Coordination, response and gene technology.

Assessment

Components	Length	Weighting	
		AS Level	A Level
Unit 1: Molecules, Diet, Transport and Health.	1hr 30min	40%	20%
Unit 2: Cells, Development, Biodiversity and Conservation.	1hr 30min	40%	20%
Unit 3: Practical Skills in Biology I.	1hr 20min	20%	10%
Unit 4: Energy, Environment, Microbiology and Immunity.	1hr 45min	NA	20%
Unit 5: Respiration, Internal Environment, Coordination and Gene Technology. <i>This paper includes pre-released reading.</i>	1hr 45min	NA	20%
Unit 6: Practical Skills in Biology II.	1hr 20min	NA	10%

All components are externally assessed exams
All papers contain: Objective questions, structured questions, short-answer questions and "How Science Works" practical-related questions.



“Look up at the stars and not down at your feet. Try to make sense of what you see, and wonder about what makes the universe exist. Be curious.”



“ Have the courage to follow your heart and intuition. ”

BUSINESS STUDIES

Edexcel International AS and A Level in Business Studies. XBS11 and YBS11

The aims of the International Advanced Level qualifications in Business Studies are to enable students to:

- develop an interest in and enthusiasm for the study of business
- gain a holistic understanding of business
- develop a critical understanding of organisations and their ability to meet society's needs and wants
- understand that business behaviour can be studied from a range of perspectives
- generate relevant solutions to business problems and issues
- be aware of the ethical dilemmas and responsibilities faced by organisations and individuals
- acquire a range of relevant business and generic skills, including decision making, problem solving, the challenging of assumptions and the quantification and management of information.

Career and degree opportunities

Careers in private or public organisations, including careers in business, management or finance, as well as entrepreneurial endeavours. The course equips students with the knowledge and skills that are vital to those entering the world of work in general. Typical employers include industries as diverse as chemicals, utilities, fashion, health, grocery and construction all require functional managers with a clear understanding of systems, efficiency and operational issues. Opportunities exist in management and analysis roles with employers in the private, public and voluntary sectors.

Syllabus outline

1. Marketing and People.
2. Managing Business Activities.
3. Business Decisions and Strategy.
4. Global Business.

Assessment

Components	Length	Weighting	
		AS Level	A Level
Unit 1: Marketing and People Section A - Short & extended response questions based on sources. Section B - Same format as Section A, based on different sources. Section C - One 20-mark essay question, based on one or more sources.	2hrs	50%	25%
Unit 2: Managing Business Activities Section A - Short & extended response questions based on sources. Section B - Same format as Section A, based on different sources. Section C - One 20-mark essay question, based on one or more sources.	2hrs	50%	25%
Unit 3: Business Decisions and Strategy Section A - Short & extended response questions, based on sources. Section B - One 20-mark essay question, based on one or more sources. Section C - One 20-mark essay question, based on one or more sources.	2hrs	NA	25%
Unit 4: Global Business Section A - Short & extended response questions, based on sources. Section B - One 20-mark essay question, based on one or more sources. Section C - One 20-mark essay question, based on one or more sources.	2hrs	NA	25%
All components are externally assessed exams			

CHEMISTRY

Edexcel International AS and A Advanced Level in Chemistry. XCH11 and YCH11

The aims of the International Advanced Level in Chemistry enable students to develop: An interest and enthusiasm for chemistry, including developing an interest in further study and careers in chemistry. An appreciation of how society makes decisions about scientific issues and how the sciences contribute to the success of the economy and society. A deeper understanding of the skills, knowledge and understanding of how science works. Essential knowledge and understanding of different areas of the subject and how they relate to each other.

Syllabus outline

There are 4 topics in the Chemistry course that will cover knowledge, understanding and skills:

1. Structure, Bonding and Introduction to Organic Chemistry.
2. Energetics, Group Chemistry, Halogenoalkanes and Alcohols.
3. Rates, Equilibria and Further Organic Chemistry.
4. Transition Metals and Organic Nitrogen Chemistry.

Career and degree opportunities

IAL in Chemistry is essential for those wishing to study medicine, veterinary science, dentistry, pharmacy and chemical engineering. Students with IAL Chemistry are regarded as well rounded applicants from universities worldwide for their analytical, numerical, communication, technical and management skills.

Assessment

Components	Length	Weighting	
		AS Level	A Level
Unit 1: Structure, Bonding and Introduction to Organic Chemistry.	1hr 30min	40%	20%
Unit 2: Energetics, Group Chemistry, Halogenoalkanes and Alcohols.	1hr 30min	40%	20%
Unit 3: Practical Skills in Chemistry I.	1hr 20min	20%	10%
Unit 4: Rates, Equilibria and Further Organic Chemistry.	1hr 45min	NA	20%
Unit 5: Transition Metals and Organic Nitrogen Chemistry.	1hr 45min	NA	20%
Unit 6: Practical Skills in Chemistry II.	1hr 20min	NA	10%
All components are externally assessed exams			

COMPUTER SCIENCE

Cambridge International AS and A Level Computer Science. 9618

Through studying Computer Science, students will develop a general understanding and perspective of the development of computer technology and systems, which will inform their decisions and support their participation in an increasingly technologically dependent society. They will develop the necessary skills and knowledge to seek employment in areas that use computer science. Additionally, students will develop their knowledge and understanding of computer science through entry to higher education, where this qualification will provide a useful foundation for further study of computer science or more specialist aspects of computer science.

Syllabus outline

AS and A Level

- Information representation
- Communication & Internet Technologies
- Hardware
- Processor Fundamentals
- System Software
- Security, Privacy & Data Integrity
- Ethics & Ownership
- Database & Data Modelling
- Algorithm Design & Problem-solving
- Data Representation
- Programming
- Software development.

A Level

- Data Representation
- Communication & Internet Technologies
- Hardware
- System Software
- Security
- Monitoring & Control Systems
- Computational Thinking & Problem-solving
- Algorithm Design Methods
- Further Programming
- Software Development.

Career and degree opportunities

In an increasingly technological world, a qualification in Computer Science is both relevant and desirable. A general knowledge base in Computer Science can be very useful for a wide range of professions, including software development, information security analysis and computer systems analysis, to name but a few. Some of the most successful companies in the world have been started by computer programmers, including Google, Microsoft and Facebook.

Assessment

Components	Length	Weighting	
		AS Level	A Level
Unit 1: Theory Fundamentals This written paper contains short-answer and structured questions. There is no choice of questions.	1hr 30min	50%	25%
Unit 2: Fundamental Problem-solving & Programming Skills This written paper contains short-answer and structured questions. There is no choice of questions. Topics will include those given in the pre-release material.	2hrs	50%	25%
Unit 3: Advanced Theory This written paper contains short-answer and structured questions. There is no choice of questions.	1hr 30min	NA	25%
Unit 4: Further Problem-solving & Programming Skills This written paper contains short-answer and structured questions. There is no choice of questions. Topics will include those given in the pre-release material.	2hrs	NA	25%
All components are externally assessed exams			

ECONOMICS

Edexcel International AS and A Level in Economics. XEC11 and YEC11

Students study how to explain and analyse economic issues and arguments, evaluate economic information, and organise, present and communicate ideas and judgements clearly. The syllabus covers a range of basic economic ideas, including an introduction to the price system and government intervention, international trade and exchange rates, the measurement of employment and inflation, and the causes and consequences of inflation. Students also study the price system, the theory of the firm, market failure, macroeconomic theory and policy, and economic growth and development.

Career and degree opportunities

Economists are employed in a variety of settings in both the public and private sectors, including the Civil Service, other government departments and think tanks, banks, consultancies, not for profit organisations. Other careers include chartered accountant, actuary and quantity surveyor.

Syllabus outline

1. Markets in Action.
2. Macroeconomic Performance and Policy.
3. Business Behaviour.
4. Developments in the Global Economy.

Assessment

Components	Length	Weighting	
		AS Level	A Level
Unit 1: Markets in Action Reasoned Choice and Data Response Section A: Six multiple choice questions Section B: Five short-answer questions. Section C: A five-part questions, based on data provided in a source booklet. Section D: One 20-mark essay question, out of a choice of two.	1hr 45min	50%	25%
Unit 2: Macroeconomic Performance and Policy Same structure as Paper 1.	1hr 45min	50%	25%
Unit 3: Business Behaviour Essay and Data Response Section A: Six multiple choice questions. Section B: A five-part question, based on data provided in a source booklet. Section C: Two 20-mark essay questions, out of a choice of three.	2hrs	NA	25%
Unit 4: Developments in the Global Economy Same structure as Paper 3.	2hrs	NA	25%
All components are externally assessed exams			

ENGLISH

Edexcel International AS and A Level in English Literature. XET01 and YET01

Literature in English provides the students who take it with a lifelong understanding and enjoyment of literary texts and, importantly, gain a range of essential skills, including:

- the ability to write clearly and effectively
- skills in developing arguments
- skills in researching and managing information
- the ability to analyse complex texts in different forms and styles.

Syllabus outline

At AS Level students are required to study three set texts and selected poems from an anthology of post-2000 poetry. At A2 Level students are required to study three set texts, selected poems from an anthology of pre-1900 poetry and respond to an unseen poem. Candidates are required to answer questions on a range of poems, prose and plays, with options from the canon of English Literature and modern texts in English. Close study of all the texts chosen is needed in preparation for a choice of essay based questions.

Career and degree opportunities

Studying English Literature at International A Level can provide a pathway into careers including publishing, journalism, the creative arts, arts administration and teaching. In terms of wider careers, advertising and public relations are popular options, while English Literature can also support entry to the civil service, banking, law and accountancy.

Assessment

Components	Length	Weighting	
		AS Level	A Level
Unit 1: Post-2000 Poetry and Prose Candidates answer two questions: one question from Section A Poetry and one question from Section B Prose. An essay question is set on each text.	2hrs	50%	25%
Unit 2: Drama Candidates answer two questions on two plays. An essay question is set on each text.	2hrs	50%	25%
Unit 3: Poetry and Prose Candidates answer two questions: one question from Section A on unseen poetry and one question from Section B Prose which is a comparison of two prose texts. An essay question is set in each section.	2hrs	NA	25%
Unit 4: Shakespeare and Pre-1900 Poetry Candidates answer two questions: one question from Section A Shakespeare and one question from Section B Pre-1900 Poetry. An essay question is set on each text.	2hrs	NA	25%
All components are externally assessed exams			

EXTENDED PROJECT QUALIFICATION

AQA Level 3 Extended Project Qualification. 7993

The EPQ is an optional addition to the four AS Levels taken in Year 12 and three A Levels taken in Year 13. It is worth half an A Level and an increasing number of universities recognise applications.

In undertaking the EPQ students will identify, design, plan and complete an individual project. Students are required, with appropriate supervision, to:

- choose an area of interest
- draft a title and aims of the project for formal approval by the school
- plan, research and carry out the project
- deliver a presentation to a specified audience
- provide evidence of all stages of project development and production for assessment.

Depending on the subject area or topic chosen, a variety of evidence may be submitted for assessment.

Evidence can be provided in any form appropriate to the type of project chosen, and may include:

- an artifact, model or construction
- a CD/video/DVD of performances or activities
- an audiotape/multimedia presentation
- a journal of activities or events
- a slide or PowerPoint presentation
- a photographic record of the project.

All project products must include a written report of between 1000 and 5000 words. The exact length of each written report will depend on the nature of the project, the subject area or topic chosen and the other evidence provided. A project which consists solely of written work should be approximately 5000 words, for example a research report of an investigation, exploration of a hypothesis or an extended essay or academic report in appropriate form.

Projects where the majority of the evidence is provided in other formats should include a report which is at least 1000 words.

Students will be assigned a supervisor who will oversee their project. Students complete a Production Log as they carry out their projects which records key information such as project aims, approval, and reviews.

Assessment

Components	Weighting
Component 1: Manage: Identify, design, plan, and carry out a project, applying a range of skills, strategies and methods to achieve objectives.	20%
Component 2: Use Resources: Research, critically select, organise and use information, and select and use a range of resources. Analyse data apply relevantly and demonstrate understanding of any links, connections and complexities of the topic.	20%
Component 3: Develop and Realise: Select and use a range of skills, including, where appropriate, new technologies and problem-solving, to take decisions critically and achieve planned outcomes.	40%
Component 4: Review: Evaluate all aspects of the extended project, including outcomes in relation to stated objectives and own learning and performance. Select and use a range of communication skills and media to present project outcomes and conclusions in an appropriate format.	20%





“ Geography is the subject which holds the key to our future. ”

GEOGRAPHY

Edexcel International AS and A Level in Geography. XGE01 and YGE01

The aims and objectives of this qualifications includes enabling students to:

- develop their knowledge of locations, places, processes and environments, at all geographical scales from local to global across the specification as a whole
- develop an in-depth understanding of the selected geographical patterns, processes and issues in physical and human geography at a range of temporal and spatial scales, and of the concepts that illuminate their significance in a range of locational contexts
- recognise and be able to analyse the complexity of people–environment interactions at all geographical scales, and appreciate how they underpin understanding of some of the key issues facing the world today.

Syllabus outline

The content is updated, engaging and relevant to international schools and enables students to develop independent and critical thinking skills in accordance with world-class principles.

This specification is designed to allow geographers the flexibility to build programmes that suit their own particular interests and needs using a range of approaches. It offers units that allow a balance between students’ own particular physical, human and/or environmental interests and key geographical topics that provide them with the knowledge, understanding and skills for further study at higher education or for employment.

Career and degree opportunities

The study of AS and A Level Geography allows progress with confidence to a degree in Geography related subjects. Careers include commercial/residential surveyor, environmental consultant, town planner, cartographer, international aid/development worker, tourism.

Assessment

Components	Length	Weighting	
		AS Level	A Level
Unit 1: Global Challenges Topic 1: World at Risk. Topic 2: Going Global.	Written exam 1hr 45min	60%	30%
Unit 2: Geographical Investigations Topic 1: Crowded Coasts. Topic 2: Urban Problems, Planning and Regeneration.	Written exam 1hr 30min	40%	20%
Unit 3: Contested Planet Section A: compulsory topics. Topic A1: Atmosphere and Weather Systems. Topic A2: Biodiversity Under Threat. Section B: optional topics. Topic B1: Energy Security or Topic B2: Water Conflicts. Section C: optional topics. Topic C1: Superpower Geographies or Topic C2: Bridging the Development Gap.	Written exam 2hrs	NA	30%
Unit 4: Researching Geography Option 1: Tectonic Activity and Hazards. Option 2: Feeding the World’s People. Option 3: Cultural Diversity. People and Landscapes. Option 4: Human Health and Disease.	Written exam 1hr 30min	NA	20%

HISTORY

Pearson Edexcel International AS and A Level in History. XHI01 and YHI01

Pearson Edexcel International Advanced Subsidiary in History

This qualification consists of two externally-examined units. The International Advanced Subsidiary is the first half of the International Advanced Level qualification and consists of two IAS units, Units 1 and 2. This qualification may be awarded as a discrete qualification or may contribute 50 per cent towards the International Advanced Level qualification.

Pearson Edexcel International Advanced Level in History

This qualification consists of four externally-examined units. The International Advanced Level consists of the two IAS units (Units 1 and 2) plus two IA2 units (Units 3 and 4). Students wishing to take the International Advanced Level must, therefore, complete all four units.

Syllabus outline

Four components, two at AS and two at A level:

1. Russia in Revolution, 1881 - 1917.
2. China, 1900 - 1976.
3. Civil Rights and Race Relations in the USA, 1865–2009.
4. The Cold War and Hot War in Asia, 1945–90.

Career and degree opportunities

As a facilitating subject, A Level History is highly-prized by top universities and will assist progression directly to university courses in History and other subjects, including Law, the Arts, Humanities and Social Sciences or as part of a course of general education. The independent nature of the study required, and the necessity to construct cogent arguments and supported judgements, makes for excellent preparation for higher education.

Assessment

Components	Length	Weighting	
		AS Level	A Level
Unit 1: Depth Study with Interpretations Russia in Revolution, 1881 - 1917.	2hrs	50%	25%
Unit 2: Breadth Study with Source Evaluation China, 1900 - 1976.	2hrs	50%	25%
Unit 3: Thematic Study with Source Evaluation Civil Rights and Race Relations in the USA, 1865–2009.	2hrs	NA	25%
Unit 4: International Study with Historical Interpretations The Cold War and Hot War in Asia, 1945–90.	2hrs	NA	25%
All components are externally assessed exams			

MANDARIN

Cambridge International AS and A Level in Chinese Language. 8681 and 9715

Cambridge International A Level in Chinese has been developed to inspire all students who have an appreciation of the language, literature, film and culture of the Chinese-speaking world. A set of topic areas and core grammar underpin the syllabus. The aims of the Cambridge International Advanced Level qualifications in Chinese are to enable students to develop the ability to understand a language from a variety of registers, enable students to communicate confidently and clearly in the target language and form a sound base of skills, language and attitudes required for further study, work and leisure. The course helps students to develop insights into the culture and civilisation of countries where the Mandarin Chinese is spoken, including the study of literary texts where appropriate (this does not apply to AS Language qualifications). Studying AS/ A Level Chinese will encourage students to have a positive attitude towards language learning and have a sympathetic approach to other cultures and civilisations.

Syllabus outline

All textual material used in the examinations will be drawn from the topic areas below, with reference to the country or countries where the language is spoken.

- Human relationships
- Family
- Generation gap
- Young people
- Patterns of daily life
- Urban and rural life
- The media
- Food and drink
- Law and order
- Philosophy and belief
- Health and fitness
- Work and leisure
- Equality of opportunity
- Employment and unemployment
- Sport
- Free time activities
- Education
- Cultural life/heritage
- War and peace
- Social and economic development
- Scientific and medical advances
- Technological innovation
- Environment
- Conservation
- Pollution
- Contemporary aspects of the country or countries where the language is spoken.

Career and degree opportunities

A degree in Mandarin Chinese is usually four years, including one year studying or working study. The analytic, communication and linguistic skills needed within a Mandarin degree are widely prized by employers. Workplace opportunities for language graduates are wide-ranging, Mandarin graduates go on to work in education, the diplomatic service, the security service, journalism, law, accountancy, business, industry and finance.

Assessment

Components	Length	Weighting	
		AS Level	A Level
Component 2: Reading and Writing.	1hr 45min	70%	39%
Component 3: Essay.	1hr 20min	30%	22%
Component 4: Texts.	2hrs 30min	NA	39%
All components are externally assessed exams			

MATHEMATICS

Edexcel International AS and A Level in Mathematics. XMA01 and YMA01

Students of the Edexcel International Advanced Level in Mathematics will extend their range of mathematical skills and techniques, using them in more difficult, unstructured problems and developing their ability to reason logically and recognise incorrect reasoning.

Syllabus outline

Edexcel offers 14 units including pure and optional units across mechanics, statistics and decision mathematics. These optional units will be delivered subject to student demand.

AS Level

Pure Mathematics (P1 and P2) plus one applications unit.

A Level

Pure Mathematics (P1, P2, P3 and P4) plus two applications units.

P1 and P2 units consist of algebra and functions, coordinate geometry in the (x, y) plane, sequences and series, exponentials and logarithms, trigonometry, differentiation and integration.

P3 and P4 units consist of algebra and functions, sequences and series, trigonometry, exponentials and logarithms, coordinate geometry in the (x, y) plane, differentiation, integration, numerical methods and vectors.

Career and degree opportunities

With A Level Mathematics, there are a wealth of options for further study and careers. Examples include actuary, engineering, education, finance, research scientist, statistician, engineering, accountancy, investment banking and insurance. Studying Mathematics helps you develop skills in logical thinking and statistical or strategic knowledge, which are valued by employers across many job sectors.

Assessment

Components	Length	Weighting	
		AS Level	A Level
Unit 1: Pure Mathematics 1 (P1)	1hr 30min	33.3%	16.7%
Unit 2: Pure Mathematics 2 (P2)	1hr 30min	33.3%	16.7%
Unit 3: Pure Mathematics 3 (P3)	1hr 30min	NA	16.7%
Unit 4: Pure Mathematics 4 (P4)	1hr 30min	NA	16.7%
Optional modules: Choose 1x Unit for AS, 2x Units for A Level	1hr 30min	33.3%	16.7% each unit

FURTHER MATHEMATICS

Edexcel International AS and A Level in Further Mathematics. XFM01 and YFM01

To study Further Mathematics at A Level students must also undertake Mathematics A Level.

Syllabus outline

The full International Advanced Level award comprises six units; Further Pure Mathematics units FP1, FP2, FP3 and a further three Applications units (excluding P1-4) to make a total of six units.

FP1 consists of algebra and functions, coordinate geometry in the (x, y) plane, sequences and coordinates.

FP2 consists of inequalities, series, further complex numbers, first order differential and series, exponentials and logarithms, trigonometry, differentiation and integration.

FP3 consists of hyperbolic functions, further coordinate systems, differentiation, integration, vectors and further matrix algebra.

Career and degree opportunities

Further Mathematics sets students up for study in degrees such as Mathematics and Engineering and provides access to the same career opportunities as mentioned in the A Level outline.

Assessment

Components	Length	Weighting	
		AS Level	A Level
Unit 1: Further Pure Mathematics (FP1)	1hr 30min	33.3%	16.7%
Unit 2: Further Pure Mathematics (FP2)	1hr 30min	33.3%	16.7%
Unit 3: Further Pure Mathematics (FP3)	1hr 30min	NA	16.7%
Optional modules: Choose 1x Unit for AS, 3x Units for A Level	1hr 30min	33.3%	16.7% each unit

PHYSICS

Pearson Edexcel International AS and A Level in Physics. XPH11 and YPH11

The aims of the International Advanced Level in Physics are to enable students to develop the essential knowledge and understanding of different areas of the subject and how they relate to each other. Through this, students will develop a deep appreciation of the skills, knowledge and understanding of scientific methods and will grow in competence and confidence in a variety of practical, mathematical and problem-solving skills. This will, in turn, develop their interest in and enthusiasm for the subject, including developing an interest in further study and careers associated with the subject.

Syllabus outline

There are 6 topics in the IAL Physics course that will cover knowledge, understanding and skills:

1. Mechanics & Materials.
2. Waves & Electricity.
3. Practical Skills in Physics I.
4. Further Mechanics, Fields & Particles.
5. Thermodynamics, Radiation, Oscillations & Cosmology.
6. Practical Skills in Physics II.

Career and degree opportunities

Studying AS and A level Physics will put students in an excellent position to progress to university courses in Physics, Engineering, Medicine, Finance, Business, Mathematics, Law, Geology and many more. Physics gives students an opportunity to view the world around them from a different perspective - one that can spark a lifetime of study.

Assessment

Components	Length	Weighting	
		AS Level	A Level
Unit 1: Mechanics and Materials.	1hr 30min	40%	20%
Unit 2: Waves and Electricity.	1hr 30min	40%	20%
Unit 3: Practical Skills in Physics I.	1hr 20min	20%	10%
Unit 4: Further Mechanics, Fields and Particles.	1hr 45min	NA	20%
Unit 5: Thermodynamics, Radiation, Oscillations and Cosmology.	1hr 45min	NA	20%
Unit 6: Practical Skills in Physics II.	1hr 20min	NA	10%
All components are externally assessed exams			

PSYCHOLOGY

Edexcel International AS and A Level in Psychology. XPS01 and YPS01

Psychology is the scientific study of human behaviour: why do we think, feel, and behave the way we do? How should psychologists conduct research that is scientific, ethical and has practical applications?

Students follow the EDEXCEL course which gives them the opportunity to learn core scientific knowledge and develop theoretical and practical skills valued by higher education and employers including critical analysis, independent thinking and research. The study of Psychology contributes to a students' broader understanding of scientific, ethical and social issues. Thus, it promotes understanding of self and others, while challenging preconceptions.

Syllabus outline

Themes

- Methodology
- Approaches and perspectives
- Issues and debates.

Year 12 Core content

- Social influence
- Cognitive Psychology
- Research methods
- Biological Psychology
- Learning theories and development.

Year 13 Specialist choices

- Developmental Psychology
- Clinical Psychology
- Psychological skills
- Either Criminological psychology or Health and Psychology.

Career and degree opportunities

Psychology opens up many career and further education opportunities. Psychology complements any career that involves people, as well as more specific careers such as those in clinical psychology, forensic psychology and educational psychology.

Assessment

Components	Length	Weighting	
		AS Level	A Level
Unit 1: Social Psychology, Cognitive Psychology and Research Methods.	1hr 30min	40%	20%
Unit 2: Biological Psychology, Learning theories and development.	2hrs	60%	30%
Unit 3: Developmental Psychology (compulsory). Optional: Criminological Psychology or Health and Psychology.	1hr 30min	NA	20%
Unit 4: Clinical Psychology and Psychological skills.	2hrs	NA	30%

ENROLMENT

At BSY we understand that choosing A Level subjects can be a difficult, and often daunting task. As such, we have in place a thorough A Level Options Pathway to ensure our students feel supported, engage with the process and make the best choices for them as individuals.

Existing Students

Students are invited to discuss their A Level choices at any time with their form tutor, subject teachers, Mr. Mycroft or any member of the Secondary Senior Leadership Team.

In the first instance please email Mr. Mycroft at: joshua.mycroft@britishschoolyangon.org

Enquiries and Enrolment

Call +95 (0)979554 1804

and speak to our Admissions Team for further information or to book a visit or meeting. You may also submit your initial application through our admissions page on our website:

www.britishschoolyangon.org



Inspiring confidence, defining futures



Be Ambitious

The British School Yangon
Taw Win Street, Mayangone,
Yangon, Myanmar

+95 (0)979554 1805
www.britishschoolyangon.org