



THE BRITISH SCHOOL
OF BEIJING, Shunyi

Secondary Information Meeting

Carol Pratt & Peter Carlisle

Deputy Heads of Secondary



BSB Secondary School Profile

- **Qualifications of Teachers – Graduates, Post-graduate & Masters degree holders**
- **IGCSE and A-level Results – consistently improving**
- **Best in Country awards – Yet to be announced but ... (Latin & German 2013)**
- **International, national and regional competitions (World Scholar's Cup, Model United Nations, Maths Olympiad)**
- **Sport and The Arts**
- **After School Activities**
- **Personal and Social Education – manners and respect**
- **Holistic Education**



University Destinations

- **World Top 100 Universities*:
38% attending**
- **World Top 20 Universities*:
10% attending**
- **World Top 5 Universities*:
6% attending**

**QS World University Rankings 2013-14*



Universities

**Imperial College, London,
University of Toronto,
Peking University,
University of Illinois,
Nottingham University,**

**Chemical Engineering
Economics
Art and Literature
Chemistry
Environmental Science**



University Guidance Programme

- Aspirations – Year 7
- Preparation – Year 10 onwards
- Focus increases through KS4; culminates in Year 12



Academics



- Baseline testing for high expectations
- High Performance Learning

- Tracking to monitor progress
- Intervention
- Academic tutoring

Art	Business Studies		Biology	Basic Intensive English		Chemistry	Core Intensive English		Chinese	Drama	Drama AS Level	E2LL	English	French	Geography	German	Graphics	History	Mathematics	Physical Education IG CSE		Physics	Psychology	Resistant Materials	Spanish	Cause for concern
	T1	T1		T1	T1		T1	T1												T1	T1					
	A	A		B		A							A	C				A	A		A					
	C	C		B	B								B						B		B			A		
	B	B		C									B		A				B							
	B	B		C			C	x					B						C	C	C			B	*	
	A		B	A	B											B			C	B	G				*	
	C		A	B									B		A			A	A		C				*	
	C		B	C			A					C	B		A			A	A		A					
	A	A		A*			A						A				A		A		A					



Pastoral Care Programme

- **Academic Tutor supports students to remove any barriers to learning**
- **Tutors are first point of contact between school and home**
- **Heads of Year support Tutors in their role**
- **Residential trips give students the opportunities to build relationships outside of the classroom**
- **PSHE lessons allows students to explore areas outside of the academic subjects**
- **Regular dialogues between Academic Tutors, Heads of Year and Heads of Department to ensure students achieve their full potential**



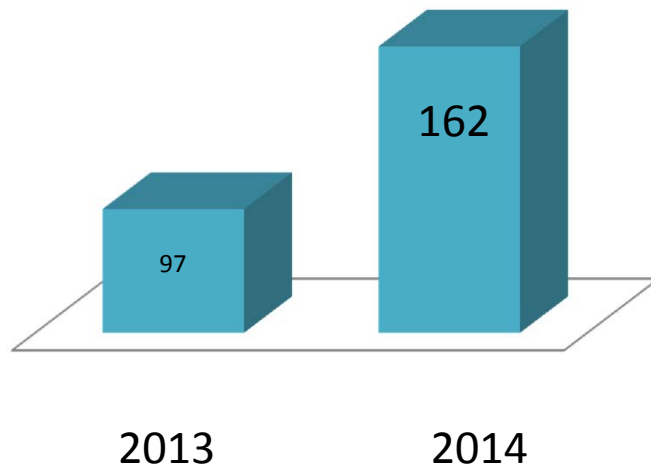
Communication

- **Student planner - independence**
- **Daily Email**
- **Academic Tutor – point of contact**
- **Teacher – available for meetings**
- **Heads of Year, Heads of Department**
- **Secondary Leadership Team**

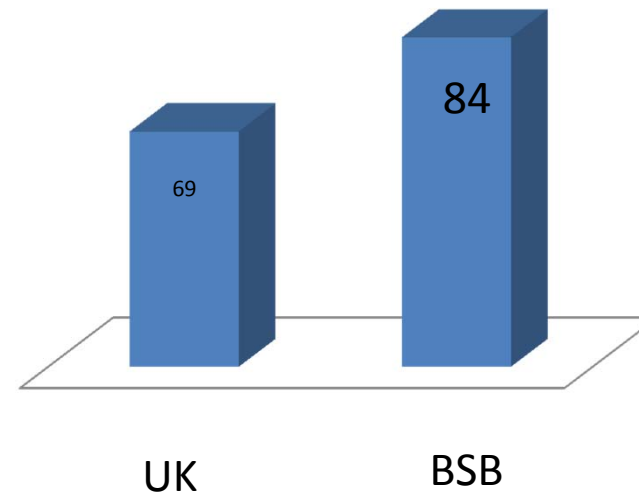


External Examinations

**Number of A-A*
Grades**



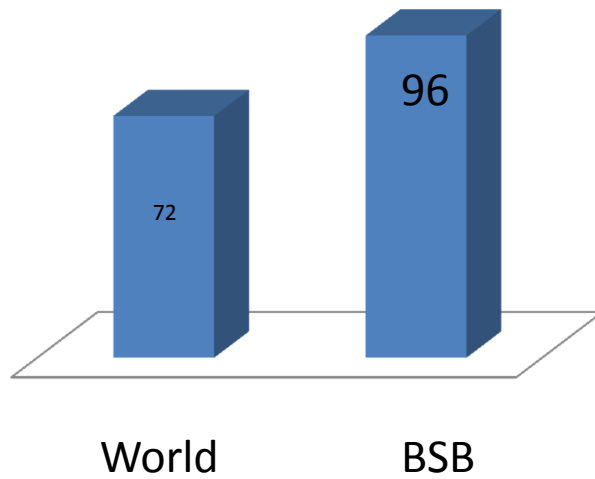
**% A*-C IGCSE Grades
2014**



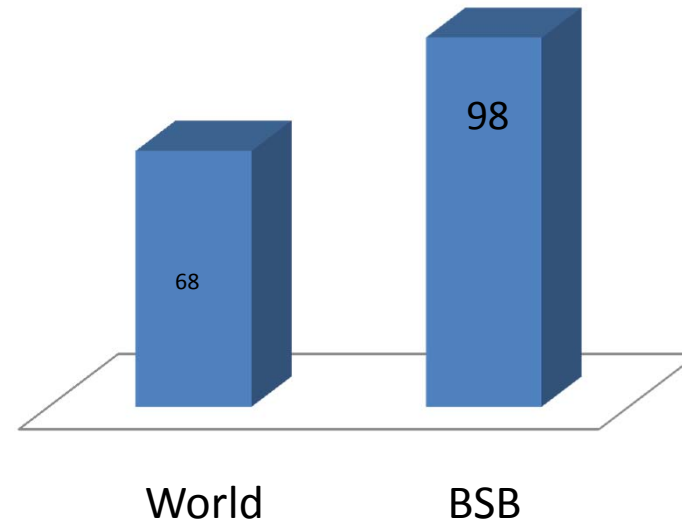


External Examinations

IGCSE % Geography C+



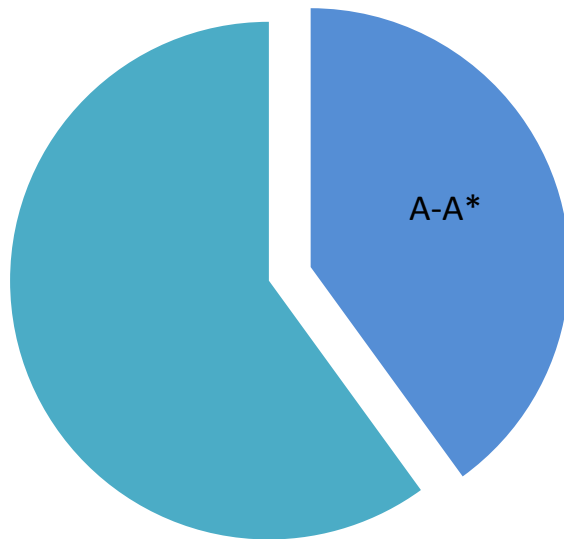
% IGCSE ESL C+





External Examinations

44% of all 2014 grades
are A-A* (UK 21%)



We do not select our students
based on their ability.

We are a school for everyone.



Our Promise

**Through great teaching,
your child will achieve more
with us than at any other
school.**



KS3 (Years 7-9) Curriculum

English

Mathematics

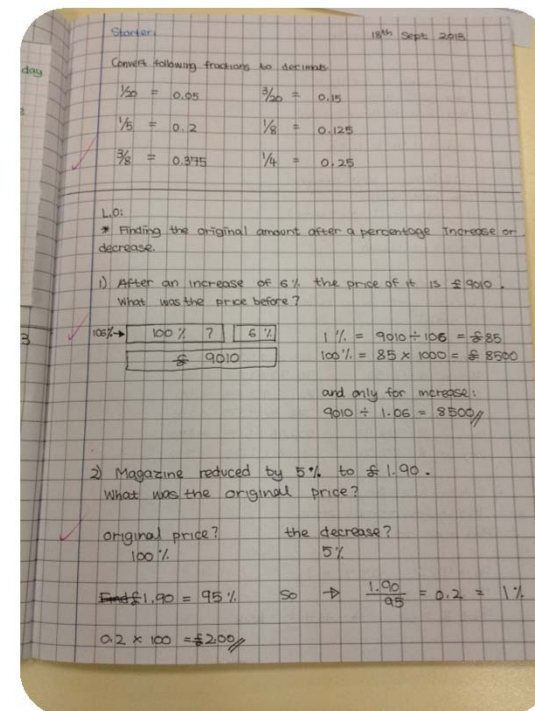
Science

Physical Education

Humanities : Geography , History

Modern Languages : French, Spanish, German, Mandarin

Creative Curriculum : Art, Music, Design Technology, IT





KS4 (Years 10-11) Curriculum

English, Mathematics, Biology,
Chemistry Physics

Mandarin

Core
PE

History, Geography, Business Studies,
Psychology, Latin, French, Spanish, German,
Art, ICT, Music, DT



KS5 (Years 12-13) – IB Diploma





NORD
ANGLIA
EDUCATION



THE BRITISH
SCHOOL OF
BEIJING, SHUNYI
SNAPSHOT

46%
EUROPE
38%
ASIA-PACIFIC
9%
AFRICA
7%
N & S AMERICA

60
NATIONS

1000+
STUDENTS

ONE OF
NORD ANGLIA
EDUCATION'S

31
SCHOOLS

169
ACADEMIC
STAFF

11
YEARS IN
CHINA

100+
ASAs

OUR GLOBAL VISION

TO HELP YOUR CHILD THRIVE AND LEAD IN THE 21ST CENTURY.