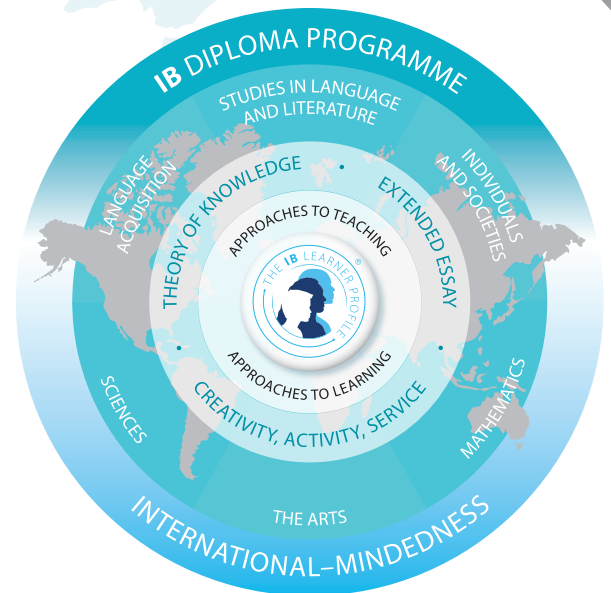


International Baccalaureate Diploma Programme Subject Brief

Language A: Language and Literature

First assessments for SL and HL - 2021



I. Course description and aims

The language A: language and literature course aims at studying the complex and dynamic nature of language and exploring both its practical and aesthetic dimensions. The course will explore the crucial role language plays in communication, reflecting experience and shaping the world, and the roles of individuals themselves as producers of language. Throughout the course, students will explore the various ways in which language choices, text types, literary forms and contextual elements all effect meaning.

Through close analysis of various text types and literary forms, students will consider their own interpretations, as well as the critical perspectives of others, to explore how such positions are shaped by cultural belief systems and to negotiate meanings for texts.

The aims of studies in language and literature courses are to enable students to:

- engage with a range of texts, in a variety of media and forms, from different periods, styles and cultures
- develop skills in listening, speaking, reading, writing, viewing, presenting and performing
- develop skills in interpretation, analysis and evaluation
- develop sensitivity to the formal and aesthetic qualities of texts and an appreciation of how they contribute to diverse responses and open up multiple meanings

- develop an understanding of relationships between texts and a variety of perspectives, cultural contexts, and local and global issues, and an appreciation of how they contribute to diverse responses and open up multiple meanings
- develop an understanding of the relationships between studies in language and literature and other disciplines
- communicate and collaborate in a confident and creative way
- foster a lifelong interest in and enjoyment of language and literature.

II. Curriculum model overview

Syllabus component	Recommended teaching hours	
	SL	HL
Readers, writers and texts	50	80
Time and space	50	80
Intertextuality: connecting texts	50	80
Total teaching hours	150	240

III. Assessment model

It is the intention of this course that students are able to fulfill the following assessment objectives:

1. Know, understand and interpret:
 - a range of texts, works and/or performances, and their meanings and implications
 - contexts in which texts are written and/or received
 - elements of literary, stylistic, rhetorical, visual and/or performance craft
 - features of particular text types and literary forms.
2. Analyse and evaluate:
 - ways in which the use of language creates meaning
 - uses and effects of literary, stylistic, rhetorical, visual or theatrical techniques
 - relationships among different texts
 - ways in which texts may offer perspectives on human concerns.
3. Communicate:
 - ideas in clear, logical and persuasive ways
 - in a range of styles, registers and for a variety of purposes and situations
 - (for literature and performance only) ideas, emotion, character and atmosphere through performance.

Assessment at a glance

Type of assessment	Format of assessment	Time (hours)		Weighting of final grade (%)	
		SL	HL	SL	HL
External					
Paper 1: Guided textual analysis	Guided analysis of unseen non-literary passage/passages from different text types.	1.25	2.25	35	35
Paper 2: Comparative essay	Comparative essay based on two literary works written in response to a choice of one out of four questions.	1.75	1.75	35	25
HL essay	Written coursework component: 1,200–1,500 word essay on one literary work or a non-literary body of work studied.				20
Internal					
Individual oral	Prepared oral response on the way that one literary work and one non-literary body of work studied have approached a common global issue.			30	20

About the IB: For over 50 years, the IB has built a reputation for high-quality, challenging programmes of education that develop internationally minded young people who are well prepared for the challenges of life in the 21st century and are able to contribute to creating a better, more peaceful world.

For further information on the IB Diploma Programme, visit: www.ibo.org/en/programmes/diploma-programme/

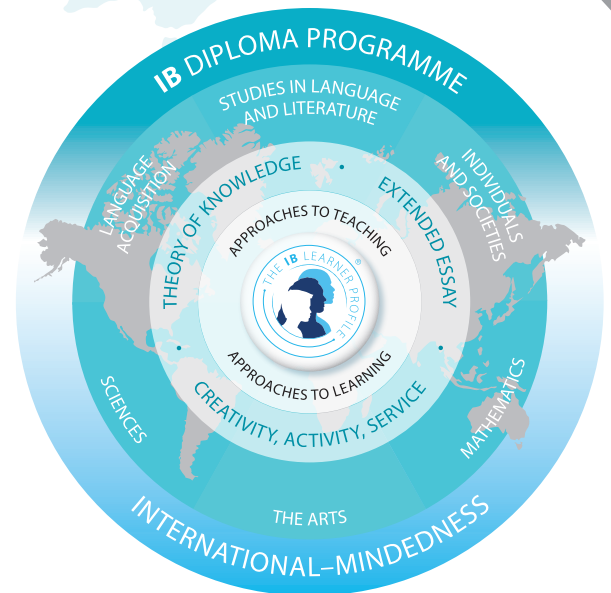
Complete subject guides can be accessed through the programme resource centre or purchased through the IB store: store.ibo.org

For more on how the DP prepares students for success at university, visit: www.ibo.org/en/university-admission

International Baccalaureate Diploma Programme Subject Brief

Language A: Literature

First assessments for SL and HL - 2021



I. Course description and aims

The language A: literature aims at exploring the various manifestations of literature as a particularly powerful mode of writing across cultures and throughout history. The course aims at developing an understanding of factors that contribute to the production and reception of literature—the creativity of writers and readers, the nature of their interaction with their respective contexts and with literary tradition, the ways in which language can give rise to meaning and/or effect, and the performative and transformative potential of literary creation and response. Through close analysis of a range of literary texts in a number of literary forms and from different times and places, students will consider their own interpretations as well as the critical perspectives of others, to explore how such positions are shaped by cultural belief systems and to negotiate meanings for texts.

The aims of studies in language and literature courses are to enable students to:

- engage with a range of texts, in a variety of media and forms, from different periods, styles and cultures
- develop skills in listening, speaking, reading, writing, viewing, presenting and performing
- develop skills in interpretation, analysis and evaluation
- develop sensitivity to the formal and aesthetic qualities of texts and an appreciation of how they contribute to diverse responses and open up multiple meanings

- develop an understanding of relationships between texts and a variety of perspectives, cultural contexts, and local and global issues, and an appreciation of how they contribute to diverse responses and open up multiple meanings
- develop an understanding of the relationships between studies in language and literature and other disciplines
- communicate and collaborate in a confident and creative way
- foster a lifelong interest in and enjoyment of language and literature.

II. Curriculum model overview

Syllabus component	Recommended teaching hours	
	SL	HL
Readers, writers and texts	50	80
Time and space	50	80
Intertextuality: connecting texts	50	80
Total teaching hours	150	240

III. Assessment model

It is the intention of this course that students are able to fulfill the following assessment objectives:

1. **Know, understand and interpret:**
 - a range of texts, works and/or performances, and their meanings and implications
 - contexts in which texts are written and/or received
 - elements of literary, stylistic, rhetorical, visual and/or performance craft
 - features of particular text types and literary forms.
2. **Analyse and evaluate:**
 - ways in which the use of language creates meaning
 - uses and effects of literary, stylistic, rhetorical, visual or theatrical techniques
 - relationships among different texts
 - ways in which texts may offer perspectives on human concerns.
3. **Communicate:**
 - ideas in clear, logical and persuasive ways
 - in a range of styles, registers and for a variety of purposes and situations
 - (for literature and performance only) ideas, emotion, character and atmosphere through performance.

Assessment at a glance

Type of assessment	Format of assessment	Time (hours)		Weighting of final grade (%)	
		SL	HL	SL	HL
External					
Paper 1: Guided literary analysis	Guided analysis of unseen literary passage/ passages from different text types.	1.25	2.25	35	35
Paper 2: Comparative essay	Comparative essay based on two literary works written in response to a choice of one out of four questions.	1.75	1.75	35	25
HL essay	Written coursework component: 1,200–1,500 word essay on one work studied.				20
Internal					
Individual oral	Prepared oral response on the way that one work originally written in the language studied and one work studied in translation have approached a common global issue.			30	20

About the IB: For over 50 years, the IB has built a reputation for high-quality, challenging programmes of education that develop internationally minded young people who are well prepared for the challenges of life in the 21st century and are able to contribute to creating a better, more peaceful world.

For further information on the IB Diploma Programme, visit: www.ibo.org/en/programmes/diploma-programme/

Complete subject guides can be accessed through the programme resource centre or purchased through the IB store: store.ibo.org

For more on how the DP prepares students for success at university, visit: www.ibo.org/en/university-admission