A photograph of three young female students in a classroom, wearing light blue school uniforms and dark aprons. They are sitting at a table, focused on painting. The student in the center is looking down at her work, while the others are also concentrated. In the background, there are wooden mannequins and various classroom supplies. A large, vibrant pink brushstroke graphic is visible in the upper right corner of the image.

Secondary Parent Handbook 2020-21



REGENTS INTERNATIONAL SCHOOL
PATTAYA
A NORD ANGLIA EDUCATION SCHOOL

Be Ambitious Be Regents

Contents

Welcome from the Head of Secondary	3
Philosophy and Vision	4
Secondary Leadership Team	5
Educational Leadership Team	6
Teaching and Learning at Regents	7
Curriculum	8
Key Stage 3 – Adapted English National Curriculum	8
Key Stage 4 – (I)GCSE Courses (the University of Cambridge and Edexcel)	8
Key Stage 5 – the IB Diploma Programme	9
Internal Examinations	10
A to Z	10
Absences	10
Accreditation and Reviews	10
Activities (CCAs)	10
Assemblies	11
Bulletin (Parents)	11
Bulletin (Students)	11
Closure of School	11
Code of Conduct (Students)	11
Eco Committee	12
English Language	12
Events	13
Gap Staff	13
Global Campus	13
Growing Minds (PSHE)	13
Health and Safety	13
Homework	13
Houses	14
ICT	15
ID Badges	15
Infirmary	15
International Baccalaureate	15
Learning Support	15
Lesson Timings	16
Lateness	16
Lost Property	16
Mobile Phones (and other Digital Devices)	16
Outdoor Education	17
Parent Supporters Group (PSG)	17
Parents' Evenings	17
Rewards	18
Round Square and Global Citizenship	18
Student Leadership	20
Student Planners	22
Uniform	22
Virtual Learning Environment (VLE)	24
Digital Devices – Sensible Use	25
Appendix – Contact Information	26



Welcome from the Head of Secondary

Welcome to Regents, we are delighted you have decided to join our growing family. We are very proud of our school and our long standing history of above world average academic results and our continuous drive for developing your children as the leaders of the future. Over 50 nations come together to make it a unique environment to learn and grow with opportunities for your children across the world with our strong long standing links with Round Square and the strong network which is Nord Anglia. Our staff team work exceptionally hard to make sure your child is offered the very best support. As we grow, we continue to look for the best practitioners from across the globe with a proven track record of excellent results.

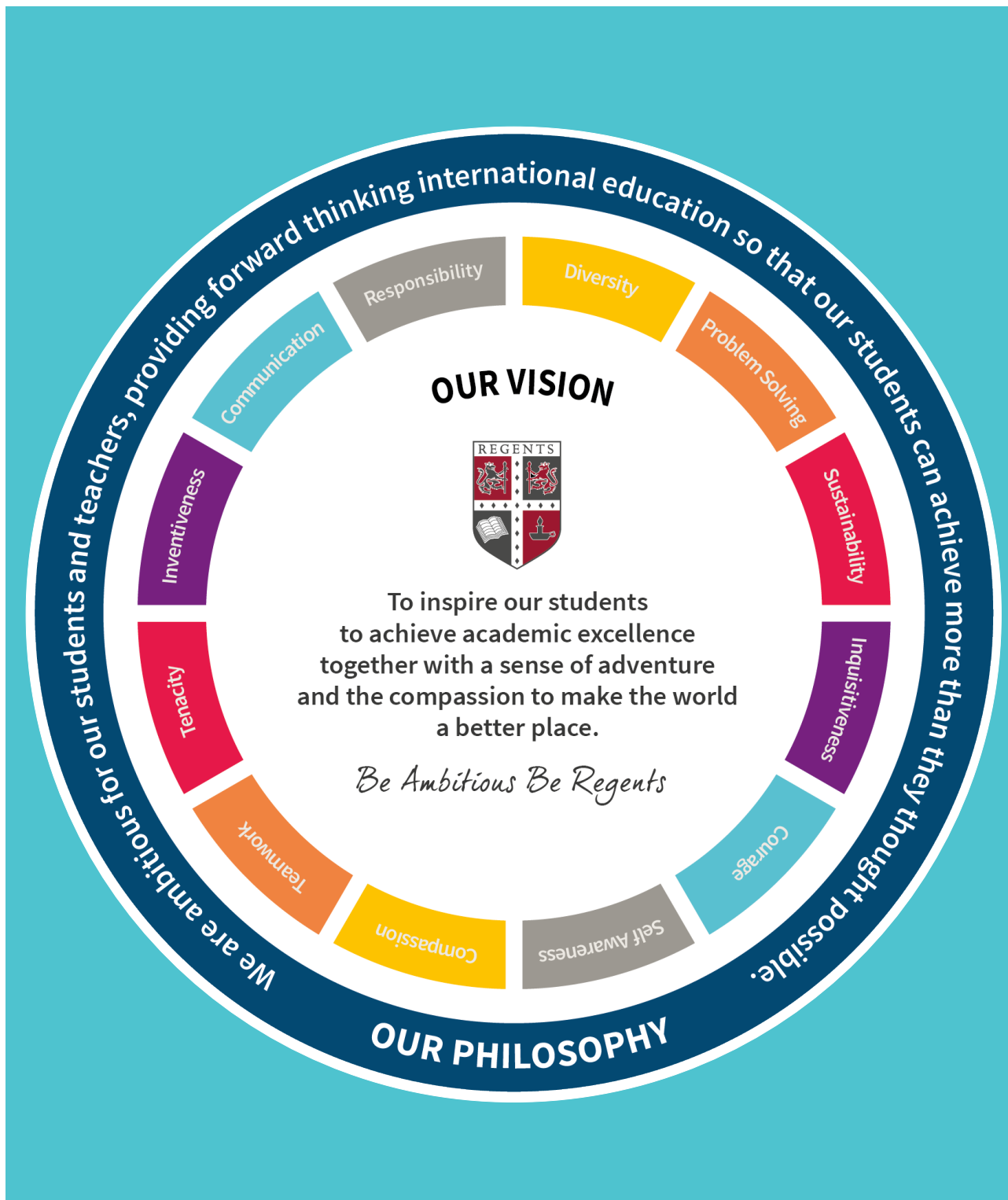
In the Secondary School, your child will experience:

- a happy, secure and purposeful school environment;
- a broad and balanced curriculum, with high expectations resulting in rapid progress and high academic standards;
- innovative teaching and effective learning;
- success for all – be it in the classroom, on the sports field, on the stage or in the wider community;
- a true partnership between school and home
- Extensive opportunities to learn about the world around them

Working together is essential. We value each and every one of you and your feedback, we are constantly looking on how to improve and develop so please come and talk to me, make an appointment and get involved in school life. We operate an 'Open Door' policy and you are most welcome to contact myself or other staff members if you have any matters that you wish to discuss.

I look forward to meeting you more in the future.

Amos Turner-Wardell
Head of Secondary



Secondary Leadership Team



Ms Amos Turner-Wardell

Head of Secondary

Strategic Development

Email: amos.turner-wardell@regents-pattaya.co.th



Mrs Tamara Mckenna

Deputy Head of Secondary

Curriculum and Assessment

Email: tamara.mckenna@regents-pattaya.co.th



Mr Michael Harrowell

Assistant Head of Secondary

Teaching and Learning, CPL

Email: michael.harrowell@regents-pattaya.co.th



Mr Harry Ainscough

Assistant Head of Secondary

Pastoral Care and Safeguarding

Email: harry.ainscough@regents-pattaya.co.th



Mrs Sara Morrow

IB Diploma Coordinator

Email: sara.morrow@regents-pattaya.co.th

As a Sec LT we meet once a week and discuss strategic development, events and admissions and the areas on the SecLT portfolios below. You are more than welcome to add topics to our agenda if you would like anything raised, please email K Daeng.

Educational Leadership Team



Ms Nicole Sargeant

Head of Innovation

Email: nicole.sargeant@regents-pattaya.co.th



Mr Alirio Rodriguez

IT Director

Email: Alirio.Rodriguez@regents-pattaya.co.th



Mr Ross Gerritsen

Director of Performing Arts

Email: ross.gerritsen@regents-pattaya.co.th



Ms Jill Hope

Head of Inclusion

Email: jill.hope@regents-pattaya.co.th



Mr Patrick McKenna

Head of Experiential Learning

Email: Patrick.mckenna@regents-pattaya.co.th

Teaching and Learning at Regents

Our philosophy is shaped by a growth mind-set and as such, we believe that:

- learning is learnable;
- learning is limitless;
- setting limits to what students (and staff) can achieve is undesirable and counterproductive.

This 'Be Ambitious' approach is shared amongst our NAE sister schools and demands that our lessons are challenging. In essence, we strive to:

- create a classroom climate that supports the development of high achievement - risk taking, high flying;
- approach lessons as part of apprenticeship in a subject not just learning the knowledge and skills needed to pass the examination - a community of learners;
- focus on the needs of individuals, make use of their strengths and recognise their weaknesses - empowered learners;
- design tasks that ensure intellectual challenge - higher order thinking;
- focus on high quality teacher/student interaction with both teacher and students playing a range of roles - questioning, explaining, challenging.

We strive to avoid language that suggests natural abilities or gifted learners as a way to encourage this idea of no limits.

Curriculum

Key Stage 3 – Adapted English National Curriculum

Years 7 to 9 students study the following subjects:

English or EAL (6 periods)
Mathematics (5 periods)
Science (5 periods)
Thai, Spanish, Mandarin or French (4 periods)
Art (2 periods)
Design and Technology (2 periods)
Drama (2 periods)
Dance (2 periods)
Geography (2 periods)
History (2 periods)
Computing (2 periods)
Music (2 periods)
Physical Education (2 periods)
Thai Language for All (1 period)
PSHE: Growing Minds (2 periods)

Assessment at KS3 is based around a skills based curriculum, the United Kingdom removed the National Curriculum levels of level 3, 4 and 5 to encourage students to focus on their skills rather than a number, we have worked hard for the last three years to ensure our KS3 assessment links the old framework and the new IGCSEs. This provides students with the appropriate skills to access Key Stage four at a high standard. All of the teachers will use this framework when assessing your children to ensure they are making relevant progress across the year.

Key Stage 4 – (i)GCSE courses (The University of Cambridge and EDEXCEL)



iGCSE/GCSE offers a flexible course of study that gives candidates the freedom to choose subjects that are right for them, whilst providing them with a broad knowledge base and lifelong skills Year 10 and 11.

Students study compulsory subjects:

English or EAL (6 periods)
Science Dual Award (8 Periods)
Mathematics (6 periods)
Growing Minds (2 periods)

Thai students are also required to take iGCSE Thai (4 periods)
Core PE is also timetabled for 2 periods per week
Students choose an option from each blocks (offering may change from year to year)

Key Stage 5 – The IB Diploma Programme



The International Baccalaureate Diploma is designed as a pre-university qualification for students aged between 16 and 19. It is currently being taught in over 1000 schools around the world. A student who graduates with an IB diploma would be well placed for entrance to top universities in the UK, USA, Canada, Europe or Australasia.

The Diploma Programme is a rigorous programme which encourages learners to be reflective, independent and forge new learning between their subjects. To complete the full diploma students study 6 subjects, 3 at a higher level, 3 at a standard level and then they study the Core. The Core consists of Theory of Knowledge (ToK), Extended Essay (EE) and Creativity, Activity, Service (CAS) each one of these Core elements helps your children grow as individuals and prepares them for the outside world to a much higher standard than any other post 16 course.

The Diploma Programme consists of four main strands:

1. Subject Choices

Six chosen subjects that reflect a breadth of educational areas. A student must choose one subject from each group, selecting three Higher Levels (HL) for 6 periods per week and three Standard Levels (SL) for 4 periods per week:

- **Group 1 (Studies in Language & Literature):** English Literature, Russian Literature, German Literature, Korean Literature, Thai Language & Literature. School Supported Self-Taught is also an option at SL-only.
- **Group 2 (Language Acquisition):** English Language (for second language learners), French/Spanish/Mandarin Language or ab initio study (for beginners and at SL only) in French, Spanish or Mandarin. English Literature is also available in this group to students who are following their own language course in Group 1
- **Group 3 (Individuals and Societies):** Business Management, Economics, Geography, Information Technology in a Global Society (ITGS), Psychology, History
- **Group 4 (Experimental Science):** Biology, Design and Technology, Environmental Systems and Societies (SL), Physics, Sports Exercise and Health Science (SL), Chemistry
- **Group 5 (Mathematics):** Mathematics (Higher Level or Standard Level), Mathematical Studies (SL)
- **Group 6:** Visual Arts, Theatre, Music– or a second subject from group 2, 3 or 4 (subject to availability)

Each subject is assessed by coursework and examination at the end of two years' study. Each subject will count for up to seven points towards the diploma.

2. Theory of Knowledge (ToK):

The ToK course runs throughout the two years of the diploma programme as a taught subject. Students are assessed through a presentation and by a written essay on a given topic.

3. The Extended Essay (EE):

The extended essay is a 4000-word independent research paper on a subject of the student's choice. A member of the teaching staff will act as a supervisor to oversee the essay.

4. Creativity, Activity, Service (CAS) programme:

This is a unique programme to the IB Diploma. Students must complete a combination of Creativity, Activity and Service. This programme contributes no points towards the diploma, but without a full and varied portfolio, a diploma cannot be awarded.

ToK, and CAS is coordinated by the Diploma Coordinator - [Sara Morrow](#)

EE is coordinated by [Tim Spear](#)

Internal Examinations

Towards the end of May, there is a series of examinations for Years 9, 10 & 12, for year 9 these are their final assessments in some subjects and it is referred to as End of Key Stage Assessments. Students' attainment and progress is measured, and targets set for future development in KS4. In Year 10 and 12 these are treated more as a MOCK week, and prepares the students for their exams coming in the following year, a failure to attain a passing grade may result in withdrawal from a subject with consultation with parents to support their in their next year. Where a student fails to achieve a number of passing grades, promotion to the second year of IGCSE/IB may be reviewed with parents to ensure the best success. In such cases, the opportunity to resit Year 10/12 will normally be offered.

Year 11 and 13 have formal mock examinations in January. These grades help to formulate formal predicted grades for the examination boards and help with decisions regarding support for certain subjects.

A to Z for Secondary School

Absences

Students are not permitted to be absent from class, or school, at any time unless they have the permission of their parents or guardians. In cases of known, or anticipated, absence students are requested to bring a note from their parents. For prolonged absence, permission is required from Tamara McKenna (Deputy head teacher). Parents or guardians are requested to provide a note (and a medical certificate for absences of over two days) to your child's Form Tutor please attach in the school planner. Please contact Khun Walai in case of absence by email walai.horian@regents-pattaya.co.th. Absences are now on the school report so you can review throughout the year.

Accreditation & Reviews

We value feedback and are accredited via regular inspections and quality reviews through EDT, CfBT, IB, the Thai Authorities, Round Square and Nord Anglia Education.

Activities (CCAs)

A series of activities operate after school, mainly on Mondays and Thursdays, from 3.30-4.30pm. The variety of activities is enormous and provides both diversity from, and support for, our curricular studies. The CCA programme is vast, but examples include: Sailing, Fobisia, Maths Club, MIT Champions, Homework Club, Table Tennis, Language Support, Service Trips, International Award, Leadership awards, Orchestra, Choir, Drama, Kilimanjaro Training, Netball, Tennis, Yoga, Football, Basketball, Golf.

Assemblies

A formal year group assembly is held each morning lead by the head of year. Termly whole school assemblies are held to celebrate key events and achievements across both the Primary and Secondary Schools. You will also be invited in for Prize Giving and Award ceremonies throughout the year.

Bulletin (Parents)

On Friday afternoons, the Parent Bulletin is emailed to all Regents parents via the Marketing Department. This weekly publication focuses on up and coming events at Regents.

Bulletin (Students)

On a Monday, Form Tutors will share the contents of the Student Bulletin with their tutees.

Closure of School

Should the school have to close for any reason, notification, via email, will be sent to staff, parents and students from the Principal, Heads of Schools or The Director of Operations. This message will also be posted to our website and Facebook page.

Code of Conduct (Students)

The conduct of students at Regents School is exemplary. Our pastoral care systems are underpinned by the Round Square Ideals (see section on Round Square and Global Citizenship). As such our pastoral systems promote key aspects of a young persons development towards becoming a socially aware global citizen. Alongside this our pastoral systems embed our 'Regent's Spirit' and promote recognition, connection and belonging to the Regents community.

As such Regents students are expected to conduct themselves appropriately at school both inside and outside the classroom in a manner that at all times will enhance their reputation and that of others at School.

Students must allow others to pursue their studies without interference and must respect the all teachers and other members of staff.

Students are expected to abide by the code of conduct below; staff will support students to follow this code and present themselves as role models at all times.

Our School Community Code of Conduct

Students are expected to:

- Treat members of the school community and visitors with courtesy.
- Respect and take responsibility for school property.
- Wear the school uniform correctly.
- Conduct themselves at all times in a manner that will enhance their own reputation and that of the School.
- Be punctual and attend all classes, unless illness or approved absence prevents attendance.
- Remain on the school property throughout the day unless permission to leave is granted by the Head of Year or the SecLT.
- Be diligent in their studies and complete homework.
- Use the Student Planner effectively and ensure that it remains in good condition. Bring the Student Planner to every class and to form time. No graffiti or covering of any kind is acceptable.
- Abide by the disciplinary procedures of the school.

Heads of Year will monitor conduct, attendance and wellbeing on a weekly basis and support and intervene with individual students as and when appropriate. Regent's understands that a repetition of a less desirable behavior can well indicate an underlying unmet need which the student needs support with. Heads of Year will aim to support the young people in their year group effectively. In many cases this will involve the Head of Year communicating with the student and families where appropriate to identify how the matter can be resolved positively moving forwards. Heads of Year will always consider carefully if an appropriate sanction should be applied to a given incident. Staff will record all occasions where a students does not met expectations on the schools internal recording system.

The discipline section and detail around the L system has been removed.

In cases where a student is judged to have made a serious breach of the school rules and expectations the Headteacher and Principal retain the right to consider the student's future at the school.

Further details regarding the school's pastoral systems, including examples of breaches of the school rules and expectations are in the 'Growing Ambitious Learners policy' available on the school website.

Eco Committee

As a school we are 100% committed to doing our bit and helping the planet. If you could ensure your child brings a refillable water bottle to school and encourage them to get involved either by recycling or by joining the Eco Committee and helping us even further by getting involved in whole school projects.

We follow the motto of the 5 'R's

Reclaim our environment
Repair the damages we caused
Reduce waste and energy
Reuse our belongings
Responsible consumers and Recycle



English Language

There is an expectation at Regents International School Pattaya that all students speak English during lessons (except MFL lessons) and in the corridors during the school day. Where students are still developing their English language there are support clubs available during social times for them to practice with their peers.

Events

We are a busy school and there are events on most week, although these are highlighted on the calendar they will also be communicated via the student planner, moodle, parent bulletin and email.

Gap Staff

As a boarding school, we have a team of gap staff (approx. 12) who are an essential part of Regents' life. They come from all corners of the globe to spend a year or six months at our school. They are involved in lessons, activities and boarding. They are treated as members of staff and expected to behave appropriately. They are a brilliant addition to our team. We also have occasional exchange students who join the school for a term, again mainly from RS schools.

Global Campus

The Global Campus is an NAE platform that allows all of our students to connect across 55+ schools from around the world. It is an excellent learning resource and departments are expected to utilise the many resources and events that take place. There is also an annual expedition that students can attend; in 2018, this was Mount Kilimanjaro in Tanzania.



Growing Minds (PSHE)

Growing Minds programme

Regents School Growing Minds programme encompasses learning and skills which are integral to the development of our students as global citizens. It includes learning around personal, social, mental and physical health issues as well as paying attention to issues which impact us regionally, nationally and globally.

Form Tutors will deliver the PSHE programme as directed by the Growing Minds Coordinator, [Liana Grosman](#). The programmes will be coordinated in such a fashion as to complement other events around the school. Periods 7 and 8 on a Friday are both allocated to Growing Minds, although some activities may involve daily instruction during Registration.

Health & Safety

Health & Safety is paramount at Regents. We have a large campus that is not only a day school but also home to many staff and students. We have a large team of support staff who maintain our site. They do a wonderful job and deserve our utmost support and respect. They are spearheaded by our Director of Operations, Khun Kirsty. Please refer and H&S concerns to any member of staff and remember to wear your Parent ID badge around school.

Homework

Homework can help the development of students as autonomous and responsible learners. Homework is a part of the overall study programme at Regents especially in key examination years. Homework will vary between subject areas and maximum of 45 minutes per subject per week will be set.

Homework at Regents attempts to:

- Enhance the whole learning experience
- Raise achievement of all students
- Improve motivation of all students
- Encourage and develop independent learning
- Increase self-discipline and develop a personal responsibility for learning
- Encourage learning as an out of school activity
- Encourage and improve home-school links

- Allow practice consolidation of work done in class
- Assist preparation for future class work
- Provide opportunities for individualised work
- Encourage students to plan and organise time
- Provide opportunities for parental co-operation and support

Types of Homework

The form that homework can take is varied. It can be:

- An extension of class work to develop or/and clarify aspects of that subject.
- A separate piece of research work on a familiar or relatively new topic.
- Preparation for a future lesson.
- Revision for a test.
- Coursework/projects.
- Finishing - occasionally and fit for purpose.

Setting and Completion of Homework:

- Student planners are issued to all students and must be brought to every lesson.
- Students will be inducted on how to use them by their Form Tutor.
- Must be brought to every lesson.
- Homework set by staff must be recorded in the planner by the student, accompanied by a completion date.
- Students are responsible for obtaining a parental signature in their planner on a weekly basis.
- Parents may use it to add any comments
- KS3 timetables are provided by HOYs.
- **Homework clubs are available for students.**

Year 7 homework is staggered:

Term 1.1 - English, Maths, Science, MFL, Instrumental Music

Term 1.2 – all other subjects

Houses

The House system divides the students into Houses for activities and competitions during the year:



FIRE (RED)



AIR (YELLOW)



WATER (BLUE)



EARTH (GREEN)

Events are numerous and include House Football, Basketball, Debating, Battle of the Bands, Dancing, Talent Show, 4K Regents Race, etc.

Students can earn House points at the discretion of teachers and staff for displaying values and acts inside or outside the classroom which demonstrate the Round Square Discoveries. These are detailed in the Round Square and Global Citizenship section of this handbook.

Every member of staff is assigned to a House and is expected to support and mentor the students within that House to organise and participate in events with the correct spirit and sense of adventure.

Each House has a 'Head of House', a member of staff who oversees the House system for the academic year. Student leadership will be integral for organisation and participation in House competitions and events. The House Trophy will be awarded to the winning House in the final assembly of the academic year. There are also House celebration events throughout the year to celebrate House successes and House Points. In addition, Friday is House t-shirt day. Students and staff can come to school in their House t-shirt and P.E. kit or normal school uniform.

ICT

Information Communication Technology at Regents has gone through a massive upgrade over the last few years. Our internet connection is fast and reliable, all classrooms have projectors, and many have IWBs. We have new suites of high-spec PCs and Macs, and an expert team of support staff to problem solve. We will continue to move forward with integrated technology in school by developing our teaching staff and with the Evolve Committee which was established in 2017 to improve use of ICT even further.

ID badges

Students must have their ID badges with them at all times. These also act as smart cards for printing and photocopying and the purchasing of food in the new and improved 'Basement Canteen'.

Infirmery

Students who need to see the School Nurse require permission from their class teacher. They will be sent with a note to the Secondary Office, where they will be issued with a 'Permission to Visit Infirmery Form' which will allow them to see the School Nurse – she will not accept non-emergency students without this form. After treatment, the Nurse will complete the Permission to Visit Infirmery Form and the student will then need to return the form to the Secondary Office and then go to class.

International Baccalaureate

The IB Diploma Programme is our post-16 curriculum and is central to the philosophy of the school. Upon arrival, our IB Coordinator will deliver an Introduction to IB workshop for all new staff. Whilst the IB years are integral to our school, it is also a key transition phase between school and university/work. Business dress for IB students is different from that worn in the rest of the school and is instantly recognisable. IB students must wear business dress correctly, as we expect them to set an example for younger students at all times. There is a full IB policy, which outlines our expectations of IB students.

Learning Support

From time to time, some students will have trouble in their learning and intervention is necessary to help support them. Sometimes support can be given from a specialist Learning Support Teacher or Assistant. This support may take place in the classroom or the student may be withdrawn; support may be for a short period or may extend throughout the child's school career. We have a small number of students who are diagnosed with SEND needs, of these children receive support of some type. The Regents International School can, in general, only deal with students who have Moderate Learning Difficulties. We will assess your children throughout the year and [Jenny Sherwood](#) will be in contact the teaching staff feel that extra support is needed to ensure excellent progress. Learning Support staff are more than happy to help with advice and support to allow reasonable adjustments to be made to classroom teaching, which helps make it more accessible for children with Learning Difficulties.

Lesson Timings

Period	Time	Duration (minutes)
Registration / Assembly	08:20 – 08:40	20
1	08:40 – 09:20	40
2	09:20 – 10:00	40
Morning Break	10:00 – 10:20	20
3	10:20 – 11:00	40
4	11:00 – 11:40	40
5	11:40 – 12:20	40
Lunch	12:20 – 13:20	60
6	13:20 – 14:00	40
7	14:00 – 14:40	40
8	14:40 – 15:20	40
Activities (CCAs)	15:30 – 16:30	60

Lateness

Students who are late to school need to sign in at the Secondary Office. Lateness to school is not tolerated and Heads of Year will contact the parents of students who are repeatedly late to school without a valid reason. Punctuality and attendance data is printed on school reports.

Lost Property

Students are to be encouraged to clearly name their property. Lost property is kept in the Secondary Office. At the end of each term, items which are not collected are donated to one of our community partners.

Mobile Phones (and other Digital devices)

When used appropriately digital devices (phones, tablets, laptops) can be useful tools for learning and communication. However, they can also be a major distraction preventing students from being focused on their learning during the school day.

For students who bring mobile phones, tablets, laptops etc. to school, there is a Digital Device policy that was constructed with the help of the Student Guild. This is printed in the Student Planner and is at the end of this handbook. Any mobile device which is being used without the permission from a teacher will be confiscated and held in the secondary office.

Outdoor Education



Embedded in the spirits of the Round Square IDEALS, Adventure and Leadership are critical skills needed for our children's development. Students from Year 7 to 13 have a week at various locations and adventure activity providers. The Outdoor Education component of our curriculum is vital to the development of each student's learning outside the classroom, and all students are expected to attend and benefit from the activities involved in each unique programme. Staff collaborate with external providers to produce curriculum related activities for the camps, which involve important delivery of the curriculum. In the exceptional circumstances when a student is unable to attend, they should not come to school.

Students in Year 12 and 13 attend a residential camp during which time they will work on key components of the Diploma Programme, in Y12 focusing on CAS projects and in Y13 their Group 4 projects.

Parents Supporters Group (PSG)

The PSG is a representative body of parents who meet regularly with a view to supporting the activities and aims of the school. Please see their information in the weekly bulletin (emailed on Fridays) where they will share important information and activities to get as many parents involved as possible.

The purpose of the PSG is:

- To support the school in fundraising and organising events.
- To provide a communication channel for parents' concerns / issues which they wish to bring to the attention of the Schools Management Team.
- To welcome and support new families to Regents International School Pattaya.

Parents' Evenings

Parents' Evenings are held according to the Secondary School Calendar. It is hoped that all parents and their children will attend Parents' Evenings. Prior to these events, letters of invitation will be distributed to parents and appointments are made online with CHQ, CHQ will show you the times your child's teachers are available and you can reserve appointments online. We will only take bookings from CHQ as many staff have many parents to see. If in the unlikely event your child's teacher is unavailable you are able to make an appointment with them by emailing them directly. All addresses are in the back of this handbook, and available on the website.

For parents who are not fluent in English we use IB students as interpreters. This can be arranged by contacting Khun Daeng, the Head of Secondary PA at arpasara.foojant@regents-pattaya.co.th.

Rewards

House points are awarded to students who demonstrate any of the Round Square Discoveries (RSD) inside or outside of the classroom. House points can be awarded to a student by any member of staff. House points are used as a way of recognizing and promoting the positive demonstration of the RSD which we see as essential to the development of a global learner.

Students will be awarded a certificate when they achieve the following number of House points:

· 25 HPs = Bronze · 50 HPs = Silver · 75 HPs = Gold · 100 HPs = Platinum · 150 HPs = Diamond

28 Students achieving these certificates will be celebrated in our whole school House assemblies which occur every term.

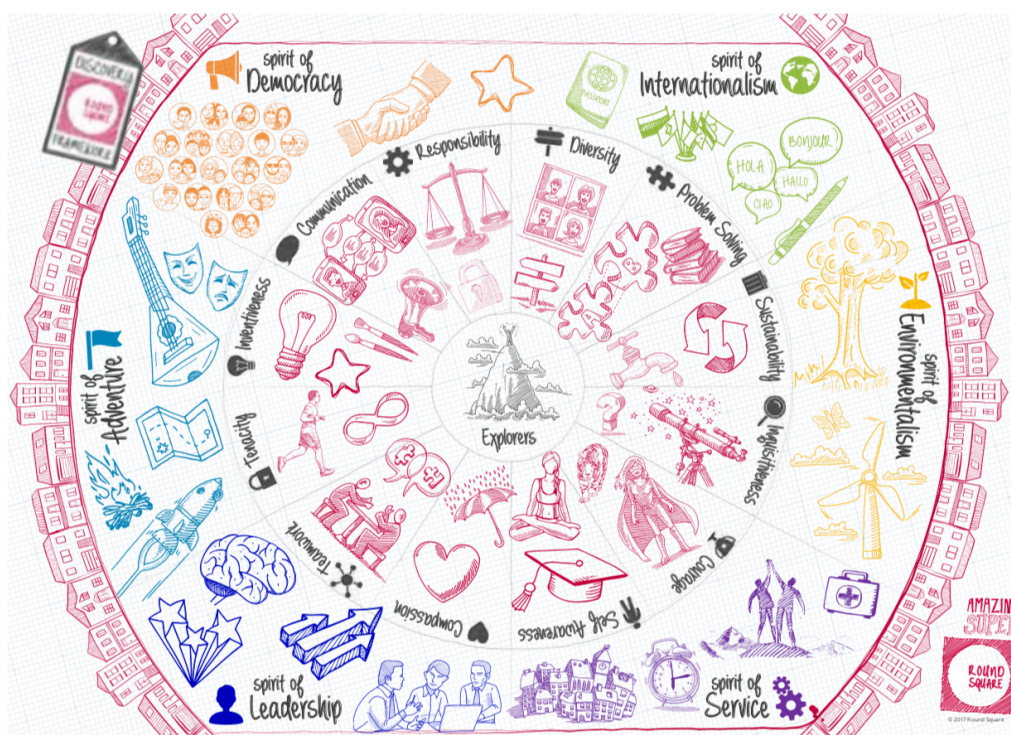
Students will have opportunities to reflect on these achievements. Considered reflection will be recognized by their form tutor and students will be awarded with a Round Square Ideals Explorer Award badge which students can wear as part of their school uniform. This connects our students to our vision and builds a sense of belonging.

Regents School also recognizes good attendance and outstanding academic effort and work with a variety of rewards ranging from certificates, prize draws and the opportunity to meet the Headteacher to show excellent work that has been produced. These rewards operate throughout the academic year.

At Regents School we also encourage our students to aspire to the highest levels of achievement in the Performing Arts and Sport. The Regents Performing Arts and Regents Sports Awards recognizes those students who have excelled within these areas.

Outstanding attainment and effort in Key Stage 3, 4 and 5 is recognized annually at the end of the academic year in June at the Regents Prize Giving event.

Round Square & Global Citizenship



Regents International School Pattaya has been a member of the Round Square organisation since 2001. The school was formally inducted into Round Square at St. Philip's College in Alice Springs, Australia, where the 2001 International Round Square Conference was hosted. To be a Round Square School, Regents International School Pattaya had to demonstrate how the six pillars of RS are delivered through different areas of educational practice in the school. Students attending Round Square schools make a strong commitment, beyond academic excellence, to personal development and responsibility. The Round Square approach promotes six IDEALS of learning: Internationalism, Democracy, Environment, Adventure, Leadership and Service. These are incorporated into the curriculum throughout all member schools.

<i>Spirit of Internationalism</i>	is found in those who seek to discover & embrace the similarities & differences between cultures & nationalities in ways that promote meaningful, lasting understanding, tolerance & respect.
<i>Spirit of Democracy</i>	encompasses a sense of equality, fairness, justice & a desire to do what is right (for the greater good).
<i>Spirit of Environmentalism</i>	centres on the significance of understanding mankind's place in the universe, the forces that shape our surroundings & the impact we have on those surroundings.
<i>Spirit of Leadership</i>	recognises that successful leaders are driven by a desire to be of service to others and to nurture, guide, develop and help them to improve and succeed
<i>Spirit of Adventure</i>	is characterised by those who push themselves beyond their perceived limits, cross boundaries & discover that they are capable of more than they thought.
<i>Spirit of Service</i>	celebrates personal development through practical experience that brings sustainable support & benefit to others.

There are now over 100 Round Square Schools located throughout the world, representing each of the six habitable continents. Every Round Square School is the same in that they believe in the six IDEALS but at the same time, each school can be very different and unique in how it chooses to implement the IDEALS in its own community, culture and environment. This unity and diversity encourages Round Square Schools to look beyond a basic academic education and enables them to prepare their students for success in an ever more complex and difficult world.

At Regents International School Pattaya, we do not hold back! Round Square is everywhere and is involved in almost everything we aim to achieve, from Early Years all the way up to graduation and the end of the IB Diploma in Year 13. It is found in the boarding programme, induction and inset, performance management the administration and Thai staff, parents, friends and, of course, the school community. Everyone has the opportunity to be involved, learn more about themselves and ultimately to make a difference locally, nationally, or globally.

If you would like more information about the Round Square programme, please contact [Patrick McKenna](#)

Student Leadership

Leadership is a key skill which we seek to develop throughout a student's journey at Regents. We understand it is an important aspect of developing a socially aware global citizen. At Regents this is underpinned by our Round Square Ideals. Regents School offers over 100 formal leadership positions within the school for students.

These positions are offered annually at the beginning of each academic year. We aim to provide a wide variety of student leadership roles, these are outlined here.

Head Student

This is an opportunity for two students to lead the student leadership body for the whole school. Awarded to Year 12 students for one year on application letter, interview, hustings and voting.

Student Guild

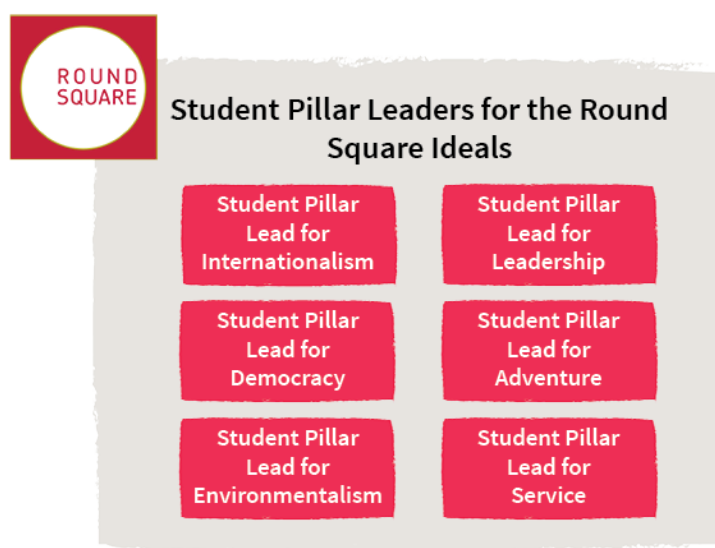
Comprising student representatives for key leadership roles focusing on fund raising and promoting the school. These are: Chairperson, Treasurer, Secretary, Visual Arts Director, Sports Director, Performing Arts Director. The Student Guild forms the Student Leadership Executive body along with the Head Students. Together they will run weekly meetings of the full school leadership committee involving the form representatives. Awarded to Year 12 students for one year on application letter, interview, hustings and voting.

Student Ambassadors

Leadership positions offered to two students from every form in school from Year 7 to 11. These students will represent the views and feeling of their form at the whole school leadership committee and act as mentors and community ambassadors for new starters into the school. Awarded to two students from each form group through voting.

Student Pillar Leaders

Leadership positions to promote the Round Square Ideals and delivery of associated events and activities throughout the year. Awarded to Year 12 students for one year on application letter.



House Captain and Vice-Captain

Each House (Earth, Fire, Water and Air) will appoint a House Captain and Vice-Captain from every year group. It is the responsibility of the House Captains to lead on House activities throughout the year and support in organizing events which enable students to become involved in House activities which promote the Round Square Discoveries. Awarded to two students from each year group through voting.

Community Partner Representative

Each year group from 7 – 11 has a community partner which it aims to support through raising the profile of the organizations cause and contributing through fund raising wherever possible. Each form group will provide a representative to champion their year group's partner. The Community Partner representative will support and lead on key events each term throughout the academic year to champion both of these. Awarded to one student from each form through an application letter to the Head of Year. The Community Partners Regents supports are:

Community Partner	Year Group
Elephant Sanctuary	7
Hand 2 Hand	8
Mei Chai School	9
Father Ray Foundation	10
Women with a Mission	11

Student working parties

These are opportunities for students to volunteer to lead on whole school initiatives as part of a working party. These will involve working with a Head of Year in the pastoral office to plan and prepare whole school materials around relevant and important issues to our community or working.

Student Planners

All students have planners that they are expected to have with them in all classes. The planner contains important information as well as being a means of communicating with parents and monitoring student progress. Form tutors regularly check that students are using their planner effectively and sign the planner each week on behalf of the Regents teaching staff, with space also provided for a weekly parent signature. A blank calendar of the year is in the planner for students to fill in important events. Students should be encouraged to update their planner as necessary during the year. The planner also has areas where students can register their house points and spaces for personal reflection.

Uniform Guideline – General

It is important that all students show pride in themselves and in the school. One visible way for them to do this is to wear their uniform correctly. We want our parents, visitors and community to see this in the way our students dress and conduct themselves when in uniform. When entering and leaving, or whilst on the premises, all students must be in full correct uniform or in full correct PE or sports kit. This includes boarding students before and after school. They are to change out of uniform completely after school. The PE uniform may only be worn for games, PE lessons or appropriate after school activities. Students may not attend other classes in PE uniform or sports kit without the permission of their Head of Year. All students are issued with an identification badge, which must be worn at all times.

Friday: House T-Shirt Day

All students are required to wear their house T-shirt on a Friday in support of the house competitions. If they have worn their t shirts for another event that week they must wear their usually school uniform on Friday.

Hair

Hair should be neat, tidy, of a natural colour and off the face. All students hair should be tied back in practical lessons if it reaches the shoulders, and headbands or hair ties must be navy, white or black. Artificial streaks or excessive, distracting colours are not permitted.

Make-up and Nail Varnish

Make-up, fake nails or nail varnish, visible face or body piercings, ankle bracelets and extreme hairstyles are not allowed. Shoes should be clear and polished, and worn or frayed clothing should be replaced.

School reserves the right to ask students to modify their hairstyle or uniform if their presentation falls below an acceptable standard as determined by the Head of Secondary.

Jewellery

Students may wear one plain ring, one pair of plain stud-like earrings in the lobe and one simple wrist bangle. If worn, one religious necklace must be under the blouse/shirt and removed for PE. Prohibited jewellery will be confiscated and passed to the Head of Year until the end of half term.

Uniform – Sixth Form (Year 12, 13 and RISE) Boys

Trousers

Boys should wear formal, plain, well-fitting trousers. Denim/jeans, cords, combat trousers and casual or un-pressed chinos of any colour are not allowed. Hipsters and low-slung trousers should be avoided. Trousers should be of an appropriate length and not drag on the ground below the heel of the shoe.

Belts

Belts should be plain in design, coloured either brown or black. The belt buckle should be conservative and of a reasonable size. Students may not wear over-sized buckles.

Shirt and Tie

Students must wear a long/short-sleeved business shirt, and tie of conventional (conservative) design and colour. T-shirts should not be visible under the shirt. Shirts must be tucked into trousers at all times.

Sweater

A simple coloured V-neck sweater or cardigan of conventional size, design and colour may be worn.

Shoes and socks

Shoes must be black/grey/white and must be smart, practical and sensible. Trainers or casual shoes must not be worn. Backless shoes, including shoes with backs that are worn down, are not acceptable. Socks should be dark coloured or white.

Uniform – Sixth Form (Year 12, 13 and RISE) Girls

Skirts

Skirts should be of a conventional design and colour. They should be worn on or just below the knee. Skirts should not be too “figure hugging”. The split(s) in any skirt should not be higher than knee length. It should not be possible to see through the material of the skirt.

Blouses

Blouses should be of a conventional design and colour. They should be collared and should not contain frills. They should cover the shoulders, upper arms and midriff. Blouses (tops) should be tucked into the skirts unless they are specifically tailored in a way as to be worn outside their skirt, in which case the midriff should be covered at all times. It is not acceptable to wear a low-cut t-shirt or vest under an open blouse. It should not be possible to see through the material of the blouse.

Sweater

A plain coloured V-neck sweater or cardigan of conventional size, design and colour may be worn.

Shoes

Shoes must be appropriately smart, practical and sensible: heels of medium height are acceptable. High heels, backless shoes, including shoes with backs that are worn down, are not acceptable.

Make-up and Nail Varnish

Sixth Form girls may wear discreet make-up and nail varnish.

On all school-sponsored activities and trips, student dress should be acceptable and avoid extremes of fashion.

Uniform – Years 7 to 11 Boys



- School shirt (not tucked in)
- Long navy school trousers or navy blue shorts
- Black/Grey/White socks
- Black shoes. Sport shoes, styled shoes and excessively thick soles are not allowed.
- Black leather belt with a standard size buckle (optional)
- Plain white t-shirt to be worn under the shirt (optional).
- (Optional) School branded uniform jacket, (Hoodie)

Uniform – Years 7 to 11 Girls



- School blouse (not tucked in)
- School long navy trousers or navy skirt, which must reach the knee
- Back/Grey/White socks
- Black shoes. Sport shoes, styled shoes, flip-flops and excessively thick soles are not allowed.
- Plain white t-shirt to be worn under the shirt (optional)
- (Optional) School branded uniform jacket, (Hoodie)

Guidelines for all:

- Hair – should be neat, of a natural colour, off the face and not past the collar. If hair reaches the shoulder it is to be tied back in practical lessons. Headbands, hair ties etc. must be navy, white or black.
- Trousers should be worn at the waist.
- The bottom of the trousers should just touch the shoes.
- Worn or frayed clothing should be replaced.
- NOT ALLOWED – make-up, fake nails, nail varnish, visible face/body piercings, ankle bracelets, extreme hairstyles.

Non-uniform (MUFTI) Days

Non-uniform days are occasionally held during the year for the purpose of supporting Round Square service projects, to raise money for the Student Guild or to celebrate House success. Although they have choice in what they wear, students must not wear clothing that is inappropriate for school. In particular students must wear:

- Appropriate footwear for technology and science laboratories.
- Clothing that is neat and tidy and not in disrepair or exhibiting inappropriate logos or words.
- Clothing that is modest (no low-cut, bare-midriff or revealing outfits).
- Skimpy shorts are not allowed
- If timetabled for PE normal PE kit must be worn

Normal standards for jewellery and make-up will apply. Students are encouraged to enter into the spirit of the day, which is primarily to help others less fortunate (it is not a fashion competition). Students are expected to be considerate of their peers at all times.

Sports/PE Kits

Details of both sports and PE kits are available from the PE Department and the school uniform shop.

Friday is House t-shirt day. All students are encouraged to wear their House t-shirt instead of their school shirt – all other uniform remains the same.

VLE (Virtual Learning Environment)

Moodle is the online learning platform at Regents. Moodle is used to share resources and information, communicate and collaborate with other students. Nicole Sargeant is our Moodle Champion and will provide support where necessary. There will be information regarding curriculum overview and homework based on Moodle for you to access.

Digital Devices Sensible Use

At Regents we encourage pupils to bring in digital devices (phones, tablets, laptops) to school as they can be fantastic learning tools. Teachers will often give pupils permission to use their digital device in the classroom, when this happens you must follow their guidance on how and when to use your device. Unless being used as learning tools we ask you to keep your digital device out of sight and switched off, this includes during lesson changeover/break and lunchtime.

We understand that digital devices are part of modern life and we believe that independence is a key part of growing up and preparing for the real world. As we all make mistakes and to help you understand when/where you may use your digital device please read the following '*sensible use*' agreement.

- **You are responsible** for the safety and security of your own digital device.
- Digital devices can be used as learning tools when permission has been given by a teacher. Otherwise they should be **out of sight**, this **includes headphones**.
- **During break time no digital devices may be used**, unless you are given permission by a teacher.
- If you need to make a phone call please go to the Secondary Office.
- During lunchtime digital devices may be used in the **Learning Hub** for school work within the allocated timeframes.
- Devices must **never be used in tests** or examinations.
- You must **not post messages to personal social networking sites** (Facebook, Twitter, Snapchat, etc) whilst at school.
- You must **not use the device to capture, record, or transmit audio, video or photos** of students or staff without permission of a teacher.
- Audio, video or photos captured on campus or a school trip must never be posted onto a public website without the **permission of a teacher**.
- The Wifi network is owned by the school and **you will be held responsible for the sites you visit** using the network.
- Digital may be used at the end of the school day (Monday and Thursday 4.20) to contact parents.

What happens if I get it wrong?

We believe that independence is a key part of growing up and preparing for the real world. We all make mistakes. However, learning from our mistakes is important and repeated breaking of rules will have consequences. In-line with our behaviour policy, consequences follow this approach:

Digital Devices will be confiscated if the sensible use policy is not followed

Appendix - Contact Information

Secondary Senior Leadership

Position	Name	Email	Thai Mobile
Head of Secondary	Ms Amos Turner-Wardell	amos.turner-wardell@regents-pattaya.co.th	0931359422
Deputy Head Curriculum, Assessment	Mrs Tamara McKenna	tamara.mckenna@regents-pattaya.co.th	0613409919
Assistant Head Pastoral Care	Mr Harry Ainscough	harald.ainscough@regents-pattaya.co.th	0942619531
Assistant Head T&L, CPL	Mr Michael Harrowell	michael.harrowell@regents-pattaya.co.th	0625185938
Diploma Coordinator	Ms Sara Morrow	Sara.morrow@regents-pattaya.co.th	0985165089
PA to Head of Secondary	Khun Daeng	arpasara.foojant@regents-pattaya.co.th	0933293881

Secondary Teachers

Lastname	Firstname	Position	Email
Mahoney	Chris	DT teacher	Christopher.mahoney@regents-pattaya.co.th
Spear	Clare	Head of Art and Design	clare.spear@regents-pattaya.co.th
Davis	Ian	DT Teacher	ian.davis@regents-pattaya.co.th
Lipsham	Katherine	Art Teacher	katherine.lipsham@regents-pattaya.co.th
McCann	Edward	English Teacher	edward.mccann@regents-pattaya.co.th
Wright	Jonathan	English Teacher	jonathan.wright@regents-pattaya.co.th
Rooney	Laura	Head of English	laura.rooney@regents-pattaya.co.th
Ray	Roisin	Second in English	roisin.ray@regents-pattaya.co.th
Morrow	Sara	IB Coordinator/English Teacher	Sara.morrow@regents-pattaya.co.th
Gilbert	Sonia	HoY10 /English Teacher	sonia.gilbert@regents-pattaya.co.th
Weller	Anna	English Teacher	anna.weller@regents-pattaya.co.th
Levin	Vadim	Cover Teacher & Russian Literature	vadim.levin@regents-pattaya.co.th
Perry	Rachel	Head of Enterprise	rachel.perry@regents-pattaya.co.th

Patrick	Alastair	ICT Teacher	alastair.patrick@regents-pattaya.co.th
Sargeant	Nicole	Head of Innovation	nicole.sargeant@regents-pattaya.co.th
Kokotovic	Andrea Slaus	Head of Psychology	andres.kokotovic@regents-pattaya.co.th
Johnstone	Anthony	HoY 11/Business & Eco. Teacher	anthony.johnstone@regents-pattaya.co.th
Harrison	Martyn	History Teacher	Martyn.harrison@regents-pattaya.co.th
Ainscough	Rebecca	Head of Humanities	Rebecca.ainscough@regents-pattaya.co.th
Morris	Stephen	Business teacher	stephen.morris@regents-pattaya.co.th
Spear	Timothy	IGCSE Coordinator & EE Coordinator	timothy.spear@regents-pattaya.co.th
Woods	Damith	WS SEND Coordinator	damith.woods@regents-pattaya.co.th
Hope	Jill	Head of Inclusion	jill.hope@regents-pattaya.co.th
Bland	Julia	EAL Teacher	julia.bland@regents-pattaya.co.th
Krediet	Astrid	Librarian	astrid.krediet@regents-pattaya.co.th
Human	Andre F	Maths Teacher	andre.human@regents-pattaya.co.th
Morris	Jonathon	HoY 12,13/Maths Teacher	jonathon.morris@regents-pattaya.co.th
Watson	Kathryn (Kit)	Head of Mathematics	kathryn.watson@regents-pattaya.co.th
Parsons	Nigel	Maths Teacher	nigel.parsons@regents-pattaya.co.th
Demery	Ruth	Maths Teacher	ruth.demery@regents-pattaya.co.th
Rosales	Ana	MFL teacher/University Advisor	ana.rosales@regents-pattaya.co.th
Kim	Hyung Sun (Hannah)	MFL Teacher - Korean	hyungsun.kim@regents-pattaya.co.th
Ripley	Kraseasin (Namyen)	MFL Teacher - Thai	krasaesin.khetsakun@regents-pattaya.co.th
Grosman	Liana	MFL Teacher /GM Coordinator	liana.grosman@regents-pattaya.co.th
Zhu	Liu (Summer)	MFL Teacher - Mandarin	liu.zhu@regents-pattaya.co.th
Benchoula	Mehdi	Head of MFL	mehdi.benchoula@regents-pattaya.co.th
Lau	Ngam (Kim)	MFL Teacher - Mandarin	ngam.lau@regents-pattaya.co.th
Jirathaitrong	Rarissaya (Boom)	MFL Teacher - Thai	rarissaya.jirathaitrong@regents-pattaya.co.th
Virachkul	Sriphan	Assistant Director of Thai	sriphan.virachkul@regents-pattaya.co.th
Karagiannis	Angelo	PE Teacher	angelo.karagiannis@regents-pattaya.co.th

Farley	Ollie	Director of Sport	Oliver.farley@regents-pattaya.co.th
Bond	Philip	Head of Swimming and Golf	philip.bond@regents-pattaya.co.th
Cook	Laura	Head of Girls Boarding & PE Teacher	laura.cook@regents-pattaya.co.th
Mansell	Clarence	Music Instrumental Teacher	clarence.mansell@regents-pattaya.co.th
Spencer	Graeme	Dance Teacher	Graeme.spencer@regents-pattaya.co.th
Subhakan	Kumarika	Music Tutor	kumarika.subhakan@regents-pattaya.co.th
Whyte	Michael	Music Teacher	Michael.whyte@regents-pattaya.co.th
Rudden	Nicole	HoY 7/Drama Teacher	Nicole.rudden@regents-pattaya.co.th
Hayden-Gilbert	Robert	Music Instrumental Teacher	robert.hayden-gilbert@regents-pattaya.co.th
Gerritsen	Ross	Director of Performing Arts	ross.gerritsen@regents-pattaya.co.th
Theerakiat	Sitthiphol	Music Tutor	sitthiphol.theerakiat@regents-pattaya.co.th
Smith	Gavin	Second in Science	Gavin.smith@regents-pattaya.co.th
Bacchus	Kobie	Science teacher	Kobie.Bacchus@regents-pattaya.co.th
Induprasad	Lakshmi	Science teacher	Lakshmi.induprasad@regents-pattaya.co.th
Thomas	Mark	Science teacher	mark.thomas@regents-pattaya.co.th
Ni Ghallchoir	Neasa	HoY 9/Science Teacher	Neasa.nighallchoir@regents-pattaya.co.th
McKenna	Patrick	Head of Experiential Learning	patrick.mckenna@regents-pattaya.co.th
Fabia	Stephen	HoY 8/Science Teacher	stephen.fabia@regents-pattaya.co.th
Daley-Bacchus	Tamika	Head of Science	tamika.bacchus@regents-pattaya.co.th
Das	Richard	Science Teacher	ricahrd.das@regents-pattaya.co.th
Morrow	Olin	TOK teacher	olin.morrow@regents-pattaya.co.th

Though not listed here in its entirety, we have an extensive and fantastic set of support staff, both expat and Thai. They do an amazing job in supporting the teaching staff and making sure the school runs smoothly.

Pastoral Care

Pastoral care is a strength of the school. Central to the aims of the school is the belief that each student may develop, within an environment in which each individual is valued and encouraged to make the most of every opportunity. In achieving personal development, each student will become a responsible member of the community, aware of the needs and values of others.

Harry Ainscough, AHT, oversees the work of the pastoral team, please do contact him if you feel your concern is unresolved.

Lastname	Firstname	Position	Email
Rudden	Nicole	Head of Year 7	Nicole.rudden@regents-pattaya.co.th
Fabia	Stephen	Head of Year 8	stephen.fabia@regents-pattaya.co.th
Ni Ghallchoir	Neasa	Head of Year 9	Neasa.nighallchoir@regents-pattaya.co.th
Gilbert	Sonia	Head of Year 10	sonia.gilbert@regents-pattaya.co.th
Johnstone	Anthony	Head of Year 11	anthony.johnstone@regents-pattaya.co.th
Morris	Jonathon	Head of Year 12, 13	jonathon.morris@regents-pattaya.co.th
Taylor	Shawn	Counsellor	Shawn.taylor@regents-pattaya.co.th

Heads of Faculty at Regents

Lastname	Firstname	Position	Email
Ainscough	Rebecca	Head of Humanities	Rebecca.ainscough@regents-pattaya.co.th
Benchoula	Mehdi	Head of MFL	mehdi.benchoula@regents-pattaya.co.th
Daley-Bacchus	Tamika	Head of Science	tamika.bacchus@regents-pattaya.co.th
Gerritsen	Ross	Director of Performing Arts	ross.gerritsen@regents-pattaya.co.th
Hope	Jill	Head of Inclusion	jill.hope@regents-pattaya.co.th
Perry	Rachel	Head of Enterprise	rachel.perry@regents-pattaya.co.th
Rooney	Laura	Head of English	laura.rooney@regents-pattaya.co.th
Spear	Clare	Head of Art and Design	clare.spear@regents-pattaya.co.th
Watson	Kathryn (Kit)	Head of Mathematics	kathryn.watson@regents-pattaya.co.th
Farley	Ollie	Director of Sport	Oliver.farley@regents-pattaya.co.th