



## *Special Educational Needs (SEN) & Learning Support*

At The British School of Guangzhou we strive for all our students to achieve their potential and understand that each child is unique. We, therefore, aim to differentiate our teaching and provision to meet all of our students' needs. At times, this may mean that our pupils require additional or alternative provision and, with this knowledge, we offer various kinds of learning support or special educational needs services through our Special Educational Needs (SEN) Department.



**THE BRITISH SCHOOL  
OF GUANGZHOU**  
A NORD ANGLIA EDUCATION SCHOOL

[www.bsg.org.cn](http://www.bsg.org.cn)

# Who are we and how can we help your child?

We are primarily able to cater to students with mild to moderate needs in these areas:

- ~ **Communication and Language**
- ~ **Cognition and Learning**
- ~ **Social and Emotional Needs**
- ~ **Sensory**

As set out in our school's admissions policy, families are requested to share with us any previous educational reports or identified areas of learning difficulty for us to then be better able to understand and support the needs of your child.

All information will remain confidential and will only be shared with relevant staff that work with your child, with the intention of providing the best possible learning strategies. While we always try to meet the individual needs of all of our students, we can only act within our professional scope.

The school will identify when a child in our care requires learning support above and beyond what we offer within our usual curriculum or classroom environment, and if considered, will refer families to seek external advice from professionals (e.g. educational assessments, speech and language screening, occupational therapy assessment, etc.).

These assessments are crucial as we seek external specialists to make recommendations for school, home and possibly additional services to ensure that we effectively meet the specific needs of the students. Our SEN department has built several networks with educational agencies in and around Guangzhou who work with families, students and our staff to better support our overall needs within our community and the SENCO can assist throughout the process.

As part of our effort to work collaboratively with families, we ask that all parents sign our 'Special Educational Needs Department Charter', which clearly defines our expectations.

We are committed to working with families and teachers throughout the academic year to see how we can provide personalised support for your child to enable them to access the overall curriculum and to also succeed within their own benchmarks.

We have a dedicated classroom filled with ample resources from the UK that cater to the different needs of our students; the space created for our students allows them to effectively work either one-to-one or within small groups in a calm manner.

## OUR SEN TEAM



**Monica Daryani**

*Whole School Special Educational Needs Coordinator (SENCO)*

M.A. Degree in Early Childhood and Special Educational Needs with M.A. National SENCO Certification.  
17 years teaching experience.



**Victoria Whieldon**

*Speech and Language Therapist and SEN Lead (Early Years and Year 1)*

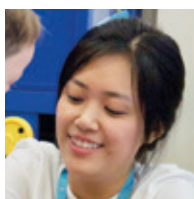
BSc Degree in Speech and Language Therapy and Post Graduate Certification in Education (International).  
7 years experience as a therapist and 4 years in teaching.



**Xiaoxuan Qu**

*Secondary SEN Lead and School Counsellor*

M.A. Counselling. Experience as a psychology assistant, school counsellor and background in rehabilitation.



**Ivy Li**

*Learning Support Teaching Assistant*

B.A. Degree Exhibition Economy and Management. Extensive experience working with children (local and international centres in Guangzhou). Study advisor in previous setting.



**Rita Huang**

*Learning Support Teaching Assistant*

B.A. Degree in English. Study on cross-cultural communication in Germany. Experience as a volunteer Primary teacher.

# Learning Support Services at BSG

## 1. SEN/LEARNING SUPPORT SESSIONS

- ~ One-to-one sessions with our specialists.
- ~ Inclusive settings within dedicated learning support classrooms.
- ~ Highly-structured individual and group activities focused on personalised learning.
- ~ Dyslexia screening (aged 7 and above).

## 2. SPEECH AND LANGUAGE THERAPY & ASSESSMENTS

The Speech and Language Therapy service at the British School of Guangzhou works in three ways:

(i) We offer advice to staff across all year groups who have concerns or questions about the speech and language needs of students they teach. Communication tips and strategies are discussed as good practice and we promote a 'communication friendly approach' across the whole school where possible. Our Speech and Language Therapist also provides regular training for staff.

(ii) For those students whose speech, language and communication needs require further investigation, we also offer assessment services. Our approach is well suited to multilingual students, as it takes into account a child's language learning potential across all languages spoken.


Every assessment includes collaboration with the child's family and a follow up report with specific recommendations and suggestions for possible interventions (please see below for more information about assessments).

(iii) We provide tailored one-to-one and group therapy sessions. The delivery of these sessions is highly individualised with a specific focus of speech, language and communication.

Collaborating with teaching staff, families and the students themselves is also essential to ensure a child-centered approach, and we see the most progress when students can link their learning to the curriculum and generalise the skills that they learn into everyday situations.

## ASSESSING YOUR CHILD'S SPEECH & LANGUAGE


We have 3 types of assessment:



### Screening Assessment

#### *1-2 Hours*


Includes a brief Speech & Language Screening with Report (can be play-based for our youngest students)



### In-depth Assessment (aged 4 and under)

#### *3-5 Hours*

Detailed Report with Parent Interview & 30-minute Feedback Meeting



### In-depth Assessment (aged 5 and above)

#### *3-5 Hours*

Detailed Report with Parent Interview & 30-minute Feedback Meeting

**Note:** SEN sessions (1:1 and highly structured group sessions) and Speech and Language services and therapy are all paid for by parents and we can try to provide necessary documentation for company reimbursements or for insurance purposes as requested. Please refer to the SEN Support Fee Structure for details of costing.

# Types of Support

- Articulation and phonological therapy
- Attention and listening intervention
- Play-based language programmes
- Narrative, grammatical and vocabulary intervention
- Social skills programmes
- Study skills intervention
- Strategies to develop eating & drinking skills
- Lego therapy

## Additional Services/Support:

- Continuous Professional Development (Staff training and Workshops)
- SEN Drop-In Sessions within all phases (Early Years, Primary and Secondary)

Come and visit us for an informal chat (staff and parents)

Email us at the address below and we can provide more information on details.



We value parental involvement and therefore as part of our services, we hold at least three team meetings with families over the academic year. This ensures that our services and recommendations remain relevant to a child's home and school life, and helps us to continuously measure and assess progress.

If you have any questions or would like to find out more about our Special Educational Needs/ Learning Support Programme, please feel free to contact **monica.samtani@bsg.org.cn**.

You can also access more information on our website at **www.bsg.org.cn**.