



Terratribes

Nord Anglia International School of Hong Kong

Terratribes is an Experiential Education Company

We use the outdoors & adventure to teach students about the relationships between themselves, others, and their environments.

What do students learn?

Students learn to understand themselves more fully and relate to others more effectively.

Psycho-Social Skills Development

- Confidence
- Self-Esteem
- Self-Concept
- Perseverance
- Self-Efficacy
- Respect

Environmental Ethics Responsibility

Outdoor Skills



Terratribes



Terratribes programs for younger students focus more on affective learning, but also engage students in cognitive activities.

Affective outcomes of adventure programming include:

Intrapersonal: Emotional & Individual

- New confidence in oneself
- Increased willingness to take risks
- Improved self-concept
- Enhanced leadership
- Increased logical reasoning
- Greater reflective thinking

Interpersonal: Social & Group

- Enhanced cooperation
- More effective communication skills
- Greater trust in others
- Increased sharing of decision making
- New ways to resolve conflicts
- Improved problem solving
- Enhanced leadership

Terratribes programs aid the development of Advanced Performance Characteristics

- **Generalisation** – *The ability to see how what is happening in this instance could be extrapolated to other situations*
- **Connection finding** – *Using connections from past experience to seek possible generalisations*
- **Ability to see alternative perspectives** – *Taking on the views of others to deal with complexity and ambiguity*
- **Meta-cognition** – *Ability to knowingly use a wide range of thinking approaches and to transfer knowledge from one circumstance to another*
- **Dealing with complex & multi-step problems** – *Can break down a task, decide on a suitable approach and then execute activity*
- **Strategy planning** – *Ability to approach new learning experiences by actively attempting to connect it to existing knowledge or concepts*
- **Critical or logical thinking** – *Ability to deduce ,hypothesise, reason, seek supporting evidence*
- **Flexible thinking** – *Ability to abandon one idea for a superior one or generate multiple solutions*
- **Self-regulatory processing** – *Ability to monitor, evaluate, and self correct*
- **Concentration, Persistence, & Resilience** – *The ability to keep going until the task is complete*



Year 5 - Yangshuo, Guangxi
Yangshuo Base Camp Adventure

June 16 - 19, 2015

Yangshuo Base Camp Adventure

Focus

- Team Building
- Psycho-social Skills Development
- Introductory Outdoor Education
- Rural Village Culture

Highlights

- Camping
- Zip-line & Abseiling
- Rock Climbing
- Caving
- Orienteering
- Raft Building



Yangshuo Base Camp

Yangshuo Base Camp is located behind the village of Fenglou, which is over 400 years old. It is nestled in a beautiful valley surrounded by karst mountains and the beautiful Jinbao River.



Yangshuo Base Camp



Yangshuo Base Camp



Adventure Activities

Rock Climbing



Rock climbing challenges students to push themselves, problem solve, and work on mental and physical obstacles as they climb the cliff of one of Yangshuo's famous limestone karst.

Zip-line / Abseiling



Students will learn to overcome fear and identify personal limits as they overcome hardships together in Yangshuo's historical Treasure Cave.

Adventure Activities

Caving



We'll explore Yangshuo's famous karst formations in depth, literally, as we journey into one of the limestone mountains to learn about the processes involved in making the surrounding landscapes one of the most beautiful in the world.

Raft-Building



Students' leadership & followership skills are tested along with their group problem solving skills as they are tasked to build a raft and pilot it across the lazy Jinbao River.

Adventure Activities

Orienteering



Students must work as a team to be first at completing the orienteering challenge. Our orienteering course covers almost 2 square kilometers of fields, orchards, and ancient villages and further builds upon leadership & followership principles within each student group.

Camping



Camping is an integral part of many of our programs, especially for our base camp programs. Students will learn how to set-up their tent, reinforce it for rain, sleep in it, take it down and pack it up. Camping also allows includes learning skills such as; fire building, cooking, and perseverance.

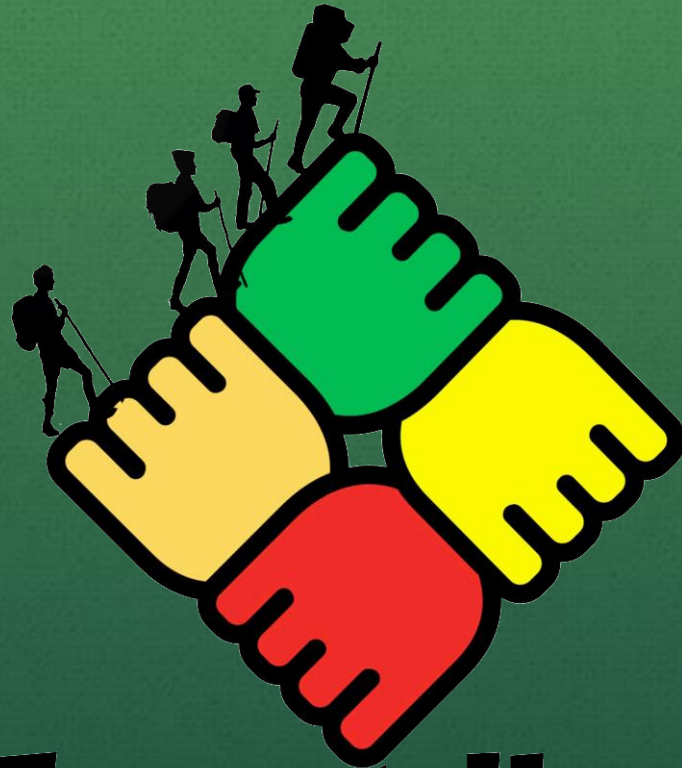
Addressing NAIS's Primary Concerns

Safety & Security

- Our base camp is located in a secluded valley with only one way in or out.
- Terratribes trip leader & activity leaders are medically trained WAFA/WFR.
- Storage available for valuables
- 20 minutes to hospital access

Meals & Amenities

- A mix of Chinese & Western meals and food is available.
- Meals address dietary restrictions & medical conditions
- Covered dining area
- 24 - hour hot water available
- Toilets available at all times



Terratribes