

SCHOOL PROFILE



THE BRITISH INTERNATIONAL SCHOOL SHANGHAI, PUXI
A NORD ANGLIA EDUCATION SCHOOL

CONTACT DETAILS:
KATHERINE ROSE
HEAD OF IB ACADEMY
KATHERINE.ROSE@BISSPUXI.COM
EXT: 1851

SCHOOL ACCREDITATION:
CEEB CODE: 694326
UCAS REFERENCE NUMBER: 45755
IB CODE: 003359

T: 0086 21 5226 3211

www.bisspuxi.com

Andrew Lancaster
School Principal

1

THE SCHOOL

The British International School Shanghai PUXI (BISS Puxi) is a fee paying, co-educational day school that offers a British-style education for international students aged 2-18 years old. Our students represent over 50 different nationalities and create an environment of diverse culture and beliefs. All programmes are taught in English, and the school does not operate a selective admission policy.

NORD ANGLIA EDUCATION

The school is part of the Nord Anglia Education group, which is comprised of 76 schools located across 31 countries in the Americas, Europe, China, Southeast Asia and the Middle East. The school is inspected and accredited annually to ensure that we meet the standards expected of us by this body. We believe our strategic alliance with Nord Anglia Education gives us a special advantage, with our students benefitting from unique opportunities such as the Global Campus (including opportunities to take part in an expedition programme, summer schools, our global orchestra, sports tournaments and science festivals) and collaborations with The Juilliard School, Massachusetts Institute of Technology (MIT), and UNICEF.

2

EXPLANATION OF GRADES

We do not calculate class rank or grade point averages. Academic achievement at school is reported through two sets of public examinations: GCSE/IGCSE (for students aged 14-16) and the International Baccalaureate Diploma (for students aged 16-19). Students receive their final results for GCSE/IGCSE examinations at the end of Year 11 (Grade 10), and for the IB Diploma examinations at the end of Year 13 (Grade 12).

Aside from these external examinations, students' academic progress is reported through predicted final grades at the end of each term. Students' predicted end of year grades give an indication of what their teachers expect them to achieve at the time of their publication, and are based on internal assessments comprised of individual subject test scores, coursework and classwork grades. Students are also graded on their class effort, homework effort, organisation and behaviour. Students work towards their target academic grades, so would not necessarily be expected to achieve the very highest predictions at the start of the two-year academic cycle.

EXTRA-CURRICULAR ACTIVITIES (ECAS)

We offer 80 different ECAs in the secondary school, providing students with the chance to extend their learning beyond the formal curriculum including opportunities to take part in (amongst others) sports, photography, painting, acting, dance, music tech, orchestra, academic support and revision sessions, language programmes, newspaper editing, mathematics, and science clubs. Students are also encouraged to set up and run their own clubs and activities.

4

5

SCHOOL CALENDAR

The school year is a minimum of 180 days, running from mid-August to the end of June. It is divided into 3 terms.

Size of 2022 Graduating Class: 60

ACADEMIC PROGRAMMES:

International General Certificate of Education (IGCSE) (Years 10 & 11/Grades 9 & 10)

Students take up to 11 individual examination subjects in the IGCSE programme. Students must study subjects including Science, Mathematics and English, and then select from a range of subjects including Art, History, Geography, Business, Physical Education, Music, Drama, Languages, Media Studies and Computer Science.

(I)GCSE results	2021 National %*	2021 BISS Puxi %
A* (or 8/9)	16.5%	45.1%
A (or 7)	12%	22.5%
B (or 5/6)	31.6%	20.3%
C (or 4)	16.8%	8.4%
D (or 3) or below	23.1%	3.7%

Performance in IGCSE Examinations is graded A-U. Since 2017, some IGCSE and GCSE subjects have been graded using a 9-point scale, of which 9 is the highest and 1 is the lowest. 8 or 9 is equivalent to A*; 7 = A; 5 or 6 = B; 4 = C. * Source: www.jcq.org.uk*



The British International School, Shanghai, China (BISS Puxi)
Secondary Campus, 111 Jinguang Road, Huacao Town, Minhang
201107, Shanghai

International Baccalaureate (IB) Diploma Programme (Years 12&13/Grades 11&12)

Students select one subject from each of six options. Three of the six subjects are studied at higher level (HL). The remaining subjects are studied at standard level (SL). Students are not permitted to take more than three subjects at HL beyond Y12. All Diploma students must, in addition, complete the IB core components of the Extended Essay, Theory of Knowledge, and Creativity, Activity, Service (CAS). For an IB Diploma student, the total score available for all subjects is 42 points, plus an additional 3 marks for the Diploma Core.

Course load: Each HL subject = 5 lessons per week. Each SL subject = 4 lessons per week in Y12, and 3 lessons per week in Y13. Lessons are 55 minutes long.

IB Grading Scale:

7	Consistent and thorough understanding always with originality, insight and the highest quality work.
6	Consistent and thorough understanding generally with originality and insight
5	Consistent and thorough understanding
4	Good general understanding
3	Limited achievement
2	Very limited achievement
1	Minimal achievement

IB Diploma Subjects offered:

Group 1: Language & Literature	English Literature A, English Language & Literature A, English B
Group 2: Language Acquisition	French B, German B, Chinese B, Spanish B, Mandarin ab initio (SL only); Spanish ab initio (SL only), Korean Lang & Lit, Chinese Lang & Lit; Dutch Lang & Lit; Self-Taught Language A or B
Group 3: Individuals & Societies	Business Management, Economics, Geography, History
Group 4: Experimental Sciences	Biology, Chemistry, Physics, Computer Science, Sport, Exercise & Health Science
Group 5: Mathematics	Mathematics
Group 6: Arts/Other	Visual Art, Film, Music, Theatre, Chemistry, Biology, Business Management, Economics

2021 IB RESULTS



45 BISS PUXI Highest Score
38.6 BISS PUXI School Average
33 World Average

IB Diploma Results*	Worldwide % 2021**	BISS Puxi % 2021
40-45	20.53%	41.9%
35-39	29.11%	41.9%
30-34	30.18%	16.2%
24-29	20.16%	0%

* source: IB Statistical Bulletin 2021
** point distribution from Diploma Awarded candidates

Our Students' University Destinations 2011-21 (Selection)

CANADA

McGill University
University of British Columbia
University of Toronto
Victoria University
Waterloo University
York University- Canada

USA

Bard College, NY
Boston College
Boston University
California College of the Arts
Carnegie Mellon University
Duke University
Hawaii Pacific University
HULT Business School
LIM College, New York
Los Angeles Film School
Marist University
Middlebury College
Mt. San Antonio College (Los Angeles)
New Mexico State University
New York University
Northwestern University
Pitzer College
Pratt (NYC)
Purdue
San Diego State University
Savannah College of Art and Design
University of Texas-Austin
University of Illinois-Urbana Champaign
University of California (Irvine/Riverside/ UCLA/ San Diego/ Riverside/Berkeley)
University of Michigan
University of Notre Dame
University of Oregon
University of Southern California
University of Washington
Whitman College

UK

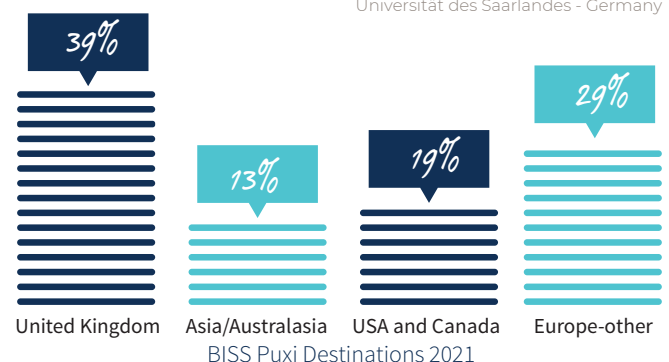
Birmingham
Bath
Cambridge
Central St Martins (UAL)
Durham
East Anglia
Edinburgh
Glasgow
Goldsmiths London
Imperial College London
King's College London
Liverpool
LSE
Loughborough
Manchester
Newcastle
Nottingham
Oxford
Oxford Brookes
Queen Mary (Univ.of London)
Royal Holloway (Univ.of London)
Royal Veterinary College
Sheffield
Southampton
St Andrew's
UCL
Warwick
York

ASIA/AUSTRALASIA

Hong Kong University
Hong Kong University of Science & Technology
City University Hong Kong
KAIST (Korea)
Korea University
Kwandong (Korea)
Catholic University of Korea
Seoul National University
Sogang University
Sungkyunkwang University (Korea)
Yonsei University (Korea)
Tong Ji (China)
Peking (China)
Jiaotong (China)
Penang Medical School (Malaysia)
Keio (Japan)
Waseda University (Japan)
University of Sydney
University of Melbourne
University of Western Australia
Otago (New Zealand)

EUROPE

Amsterdam University of Applied Sciences
Antwerp University
Bocconi university
CBA Copenhagen Business Academy
Delft University of Technology
Ecole Polytechnique Federale de Lausanne
EPFL (Switzerland)
European Institute of Design
Erasmus University Rotterdam
ESSEC Business School
Gent (Belgium)
Glon School of Hotel Management
Humbolt University Berlin
IE University, Spain
Kolpin Kunstschule Stuttgart (Germany)
La Sorbonne, France
National University Ireland (Galway)
Rotterdam University of Applied Sciences
Université Catholique de Louvain (Belgium)
University of Geneva
University of Graz
University of Helsinki (Finland)
Universität des Saarlandes - Germany



BISS Puxi Destinations 2021