

A close-up photograph of a young girl with her hair in a braid, playing a violin. She is looking down at the instrument with a focused expression. A teal-colored speech bubble is overlaid on the right side of the image, containing the text 'Welcome to The British School of Guangzhou'.

Welcome to The  
British School  
of Guangzhou



THE BRITISH SCHOOL  
OF GUANGZHOU

A NORD ANGLIA EDUCATION SCHOOL

Welcome to Our School



## Contents

Why Choose a British School.....	5
Our Story.....	6
Our Promises to You.....	7
Our Core Values.....	10
Admissions Process.....	12
How to Apply.....	12
Guide to Year Groups.....	13
Admissions Criteria.....	13
Entry Assessments.....	15
English as a Secondary Language & Learning Support.....	16
Acceptance & Enrolment Fee.....	16
Waiting Lists.....	16
Frequently Asked Questions.....	18
General Terms & Conditions.....	22
Nord Anglia Education.....	24



## Why Choose A British School?

British education, at both school and university level, has achieved a worldwide reputation for quality.

The reputation of the British educational tradition is due in part to the reputation and academic excellence of institutions such as Oxford and Cambridge, and at the School level, renowned independent schools such as Eton, Harrow and Winchester. British education is focused on processes and outcomes — what should a child know and be able to do at any given age, as opposed to emphasising the acquisition of specific knowledge. The National Curriculum for England and Wales takes a progressive approach; from the ages of 1 to 18, each stage builds upon what has come before. Certain key principles, starting from the Early Years, run through the whole of the education system: the notion that each child is unique and that this is important, an emphasis on developing positive relationships (with teachers, parents and peers), a focus on enabling environments (learning does not happen exclusively in the classroom), and finally, learning and development through looking at outcomes and results, but only as one facet of a child's education.

A British education emphasises the development of the whole student, and particularly at the Primary level there is a great deal of scope for creativity and individuality in the classroom. When all of this is considered alongside the continuity and transferability offered by a British education around the world, together with the fact that British institutions offer qualifications that are recognised internationally, it is little wonder that the success of British schools abroad continues to flourish and grow.

The popularity of British education can be seen in the huge number of British schools located outside of the UK. There are more than 2,000 schools outside of Britain teaching elements of the English National Curriculum, and more are opening every year. Students from these schools account for a significant percentage of the overseas students doing undergraduate degrees at UK universities. Choosing a British international school not only gives students the benefit of a British education, it is also eminently transferrable. The structure and consistency of the national curriculum allows students to move easily, between British schools in various countries including the UK, and facilitates progression to universities in the UK or elsewhere in the world.

At The British School of Guangzhou, we provide an enhanced British-style education that takes the best of the UK curriculum and reinforces it with extra-curricular and instrumental programmes. We also add strong Chinese language programmes to reflect the growing importance of Mandarin as a world language. Our students sit the same public tests and examinations that are administered in England and will typically perform well above the UK average attainment levels.

“At BSG, we recognise that academic achievement is central to school life, but rather than focus on preparing for tests, we believe that a broad and vibrant curriculum creates the enthusiasm for learning that will lead to success. With this, good examination results simply follow.”

**Mr. Mark Thomas, School Principal**

## Our Story



The British School of Guangzhou (BSG) is at the forefront of international education in China. Established in 2005 for students aged 2 to 18, the school has gained a reputation for academic excellence leading to 'A-Level' qualifications that offer a clear path to the world's top universities.

The school's prime objective is to create a lifelong 'Love of Learning', applying the core values of 'Respect', 'Responsibility', 'Integrity' and 'Commitment'.

Our impressive facilities offer a wide range of performing arts and sports amenities that provide students with age-appropriate challenges as part of daily school life.

The school employs only fully-qualified professional teachers, mainly from the UK, and is registered with both the Chinese Ministry of Education and leading international school organisations that include CIS, COBIS and FOBISIA.

Enrolment is selective with students from over 50 countries attending.



## Our Promises To You

At The British School of Guangzhou, we welcome each family who joins us with three promises:

Your child will be inspired by highly-qualified, professional teachers to develop a lifelong love of learning.

We have a rigorous recruitment process that ensures we select the very best possible teachers who enrich learning through innovative modern teaching practices enhanced by the many additional enrichment programmes that are in place. These encourage students to further enjoy learning while celebrating individual progress and group success.



## Our Promises To You

Your child will be challenged by a world-class curriculum to achieve academic success within a safe and truly international environment.

Creating a safe and nurturing environment is our prime objective, as we deliver the English National Curriculum (ENC) with an international twist within a school that only accepts children from the international community.





Your child will attend a school that actively promotes the core values of respect, integrity, commitment and responsibility.

Our academic results are excellent but the focus throughout the school is on developing children holistically using the school's five core values as a cornerstone.



## Our Mission & Core Values

Our mission is 'to create a lifelong love of learning' within all who attend The British School of Guangzhou.

The School has a strong and clearly defined set of 'core values' that are permanently engrained within the school's philosophy. They underpin our success and overarch all that takes place within the school community. Our hope is that students will develop a lifelong love of learning as they adhere to and adopt these values as their own.

### **A love of learning**

We aim to nurture intellectual curiosity through engaging and enquiry-led teaching that will create a love of learning within our students. We encourage students to work independently and collaboratively and to demonstrate creativity and innovation in their approach to solving problems. Our students are provided with a safe, stimulating and supportive learning environment that gives them the courage to take calculated risks and to learn and improve from feedback. We use innovative teaching methods and technology to enhance our students' mastery and enjoyment of their studies.

### **Respect**

It is our duty to demonstrate respect and awareness to all. The British School of Guangzhou actively works to help students nurture these qualities by giving them opportunities to develop self-esteem and self-confidence. This respect is evident in interactions with students, parents, staff and the environment. Respect requires an open mindedness and incorporates an understanding,

tolerance and compassion towards others in both thought and action. We aim to develop an international awareness and cultural sensitivity within all of our students and to provide them with daily opportunities to demonstrate this.

### **Integrity**

As a school, we act in a completely transparent manner. We see integrity as being honest, open and truthful. We believe in being trustworthy in our dealings with each other and being able to give and receive constructive feedback. We encourage our student body to have the courage of their convictions and the strength of character to stand up for what they believe is right.

### **Responsibility**

Students are expected to take responsibility for their learning and their behaviour. We aim to make our students confident, autonomous learners who are able to meet deadlines and learn to solve problems effectively. They develop their sense of responsibility by making informed choices, learning to consider the consequences of their actions and through leadership opportunities. Responsibility extends beyond the classroom where we demonstrate a consideration towards others and to the environment.

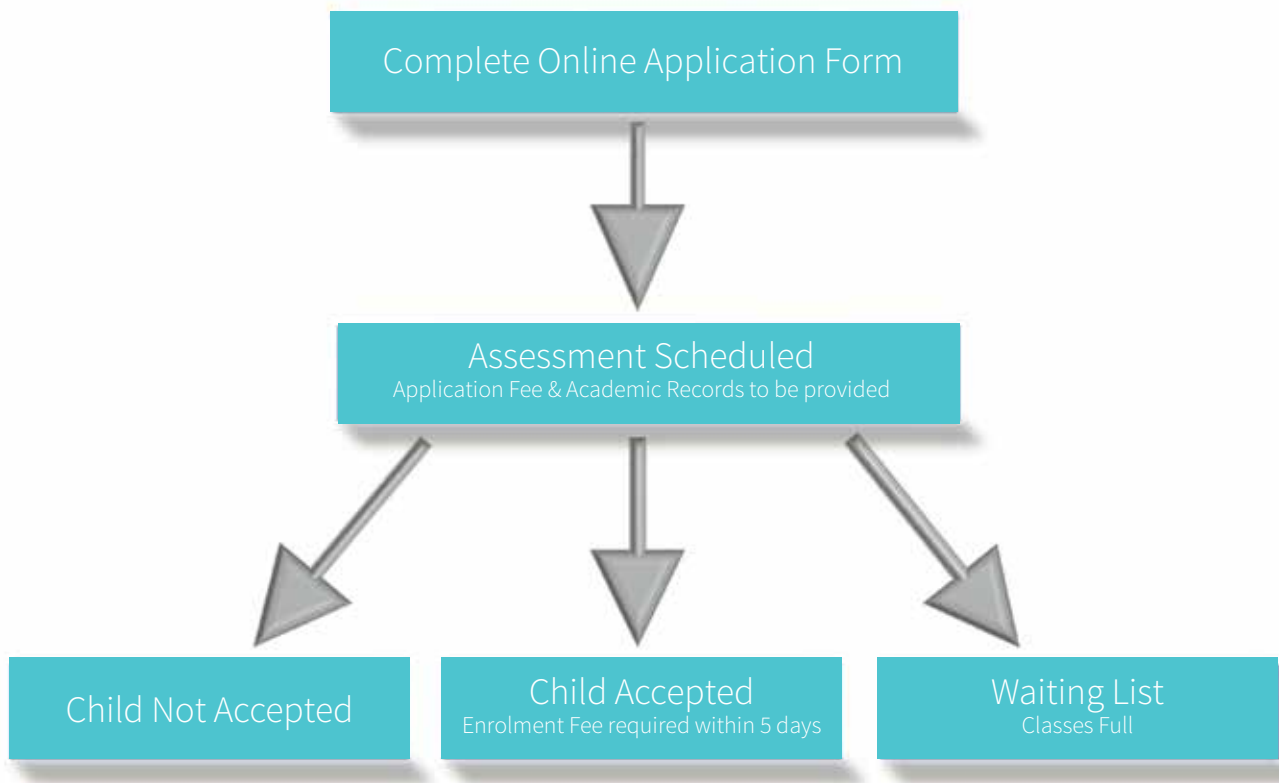
### **Commitment**

We seek to establish a strong work ethic within our students and a desire to strive for excellence. Students are encouraged to develop a resilient attitude and persevere to overcome difficulties. We believe that sustained effort greatly enhances students' chances of success.

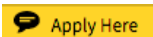


# Admissions Process

Admission to The British School of Guangzhou is selective and follows a clear administrative procedure which aspiring students must follow. The process is summarised in the diagram below:



## How to Apply

In order to apply for enrolment at the School, prospective parents must submit an ONLINE APPLICATION FORM through our website, [www.bsg.org.cn](http://www.bsg.org.cn). This application form can be easily located on the far right side of the site on a tab that reads 



Those parents who are unable to fill in the online application form directly can call the Admissions team to arrange an appointment for help filling it in, either on the school premises or with advice and assistance from a member of our Admissions staff.

## Guide to Year Groups

The British School of Guangzhou follows the English National Curriculum, allocating children to year groups in exactly the same way as any school in the UK. The table below provides the age to year group placement as well as the corresponding IB or American System grade equivalent.

Age on 1st September	Year Group (UK)	Grade Equivalent (USA)	Key Stage Grouping (UK)
1	Toddler	Toddler	Early Years Foundation Stage
2	Pre-Nursery	Toddler	
3	Nursery	Pre-K	
4	Reception	Pre-K	
5	Year 1	Kindergarten	Key Stage 1
6	Year 2	Grade 1	Key Stage 2
7	Year 3	Grade 2	
8	Year 4	Grade 3	
9	Year 5	Grade 4	
10	Year 6	Grade 5	Key Stage 3
11	Year 7	Grade 6	
12	Year 8	Grade 7	
13	Year 9	Grade 8	IGCSE
14	Year 10	Grade 9	
15	Year 11	Grade 10	A-Levels
16	Year 12	Grade 11	
17	Year 13	Grade 12	

### Admissions Criteria

The principal aim of the School's admission policy is to ensure students are able to succeed academically, while contributing to school life through sports, arts and social interaction. The level of spoken and written English is a determining factor, though other factors such as standards of behaviour, work ethic and past academic achievement also play a role in the decision to accept a student or not. The British School of Guangzhou also aims to ensure a predominance of native English speaking students, while providing a balanced and rich cross-section of nationalities.

A visit and/or assessment will be scheduled with parents shortly after an application has been received with the correct fee. Parents should expect to bring with them their child(ren)'s past academic reports (if applicable), copies of student and parents' passports as well as signed copies of the Conditions and Declarations documents the School has provided to them via email (this document can also be signed at the School). Depending on the Key Stage or year group, different entry requirements are applicable.



## Entry Assessments

### Early Years Foundation Stage (Ages 1 to 4)

Priority will be given to students with native or high levels of English, though at these ages more flexibility with the level required is applicable. Assessment during the visit is informal and involves an activity in a classroom setting with some simple number and letter recognition (mainly ages 3 & 4). Standard of behaviour in a classroom setting will be taken into account.

### Key Stage 1 (Ages 5 to 6)

At these ages it is expected that an applicant has an adequate command of the English language, being able to communicate and receive instructions from teachers. A simple written assessment will be undertaken, in both Mathematics and English. Standards of behaviour and social interaction are also taken into account.

### Key Stage 2 (Ages 7 to 10)

At these ages it is expected that an applicant has an adequate command of the English language, being able to communicate and receive instructions from teachers. A written assessment will be undertaken in both English and Maths, with the expectation to perform at a similar level to peers within the School and in the UK.

### Key Stage 3, IGCSE and A-Levels (Ages 11 to 17)

At these ages it is expected that an applicant has a very good command of the English language. A written assessment will be undertaken in both English and mathematics, with the expectation to perform at a similar level to peers within the School and in the UK. Students applying for IGCSE or A-Level courses must demonstrate a potential to succeed in the examinations, with a capacity to reason and handle complex issues and subject matters.



## **English as a Secondary Language and Learning Support**

The British School of Guangzhou delivers the curriculum as any school in the UK would, and children with very limited levels of English will struggle in class. The School is able to provide specific and targeted support to those students who may have low levels of English but have demonstrated a strong learning ability and a desire to advance academically. These students receive additional support from our EAL (English as an Additional Language) specialists, typically in very small class sizes or groups. EAL lessons replace some non-core subjects or Chinese language classes for as long as required. The aim is for every student receiving English support to achieve the level of our mainstream students within 18 months, but this varies with each student.

From Year 2 upwards, The British School of Guangzhou limits the number of students requiring additional English support to 20% of any year group.

## **Acceptance and Enrolment Fee**

The School will usually communicate acceptance of an applicant within a few days of the assessment taking place. To accept placement, payment of the Enrolment Fee is required within 5 days. Failure to confirm the placement through the payment of the Enrolment Fee will result in the applicant's place being forfeited.

Parents who have a child intending to join the School once the academic year has commenced, should expect to deliver the Enrolment Fee, together with the corresponding tuition fees and charges, before attendance can begin.

## **Waiting Lists**

Children who have successfully passed assessment, but are unable to enrol at the School as a result of the year group being full, may be offered a place on a waiting list. Priority in the waiting list will be given to:

- Siblings of current students
- Children transferring from another Nord Anglia Education school
- Diplomatic & Consulate children
- UK nationals
- Children of staff members

Please note that within each category above, priority is given to pupils who have the highest levels of English or academic ability.



*“Our students aren’t just inspired to achieve academic success. They’re also encouraged to adopt our five core values of respect, responsibility, commitment, integrity and love of learning.” Mr. Iain Ruck, Head of Secondary School*



## Frequently Asked Questions



### **Is the curriculum taught at the School recognised by other international schools and universities?**

The British School of Guangzhou follows the English National Curriculum, as delivered by top UK independent schools (the curriculum is adapted to cater for the international nature of our students and to take into account our location within China). Students attending our school will have their qualifications accepted by other reputable British and international schools, as well as universities worldwide.

The British School of Guangzhou is a member of the Nord Anglia Education family of schools and an active member of reputable international school associations, such as FOBISIA (Federation of British Schools in Asia), COBIS (Council of British International Schools) and CIS (Council of International Schools); and is fully licensed by the Chinese Ministry of Education.

Our 'SAT', 'IGCSE' and 'A-Level' examinations are fully recognised and accredited by the same Examination Boards as other top UK private schools both in the UK and Internationally, these include the Cambridge University International Examination Board (CIE) and Edexcel.

### **Are your teachers UK qualified?**

All teachers are fully qualified and are either British nationals or have had recent significant experience of delivering the UK National curriculum. The School devotes a great deal of time and resources to recruit top candidates who are mostly interviewed in the UK or through our network of schools. Obvious exceptions to this rule are our Chinese language teachers and some specialist teachers, who may have qualifications from other countries.

## **What are your class sizes?**

For Pre-Nursery, the maximum is 16. For Nursery, Reception and Lower Primary classrooms, the maximum is 20. For Years 5 & 6, and Secondary classes, the maximum number is 24 students. School policy allows for these maximums to be extended by two students, to accommodate native English speakers.

## **I am applying from overseas and my child cannot attend an assessment at the School?**

Parents who are applying from overseas will be required to send by fax or email, copies of the latest academic transcripts for their child (usually only children aged 4 or above). Depending on the information provided, the School will reply with three possible outcomes:

- In very exceptional circumstances the child is accepted unconditionally. This is mainly limited to native English speakers, with exceptional academic transcripts/references normally from an English National Curriculum school.
- The School sends a copy of the assessment paper for the child to sit in a controlled environment, either at his/her current school, at a Nord Anglia Education sister school, or at home. An admission offer may be granted on the basis of the test results. Alternatively, a conditional admission offer is made, pending a further assessment upon arrival to the School (see below).
- Conditional admission is granted, pending an assessment upon the child's arrival. The School will provide an opinion as to the student's chances of success. This based on available information and reports.

## **Will you provide a bus service to where we live?**

The School has a comprehensive bus service and strives to ensure children spend the least amount of time possible travelling to and from school. Our routes cover most of the typical expatriate residential compounds, often created or adapted to provide the maximum flexibility possible. However, parents living in remote or untypical residential areas with no other students living in the vicinity may find that we are unable to provide a bus service. Please contact our bus coordinator for more information. You can find bus schedule details on our website at [www.bsg.org.cn](http://www.bsg.org.cn).

## **Is the 'Enrolment Fee' deducted from the fees?**

No. The Enrolment Fee is an independent item from tuition fees and other charges. It must be delivered in addition to other charges and will not be refunded at any time.

## **My child has very limited English. Can I apply to the School?**

The British School of Guangzhou delivers its curriculum in English. In order for students to be academically successful, they must have sufficiently high levels of both written and spoken English.

## Frequently Asked Questions

The demands on the level of English increases with the age of the child; typically being less demanding during early years and more demanding as children move into the Secondary year groups. The School is able to provide language support, but only for a very limited number of students and on the condition that this will only be needed for a limited time. Typically a child with no English ability above the age of 10 will not gain admission to the School.

From Year 2, school policy limits the number of children requiring English support to a maximum of 20% of any year group.

### **Children with Special Educational Needs**

Our teachers and teaching assistants are able to accommodate needs of students with moderate learning difficulties. In general, students with more severe learning difficulties will be not be accepted unless we feel that it is possible to provide individual support that will allow them to succeed. In such cases, parents will be responsible for the cost of this additional one-to-one support.

### **Can my child enrol at the school throughout the academic year?**

Yes. Being in a dynamic city like Guangzhou, the School is open to receiving students throughout the academic year and special attention is given to ensure new arrivals feel welcome and integrated into the class. The fact that our students are used to interacting with children from many nationalities and with varying backgrounds, makes the process of creating new friends and bonds all that much easier.

### **What is the nationality breakdown at the School?**

Approximately 40% of our students are from Britain, North America, Europe and Australia (13% North American, 10% European, 10% Australasian and 7% British). 35% are Asian nationals (13% Korean, 26% Hong Kong) and 25% are from other continents (4% Indian, 15% Other Asian, 4% Rest of the World). Please note that these percentages are correct at the time of printing but are subject to continual change.

### **What is a typical weekly timetable?**

School runs from Monday to Friday, starting at 8:00am and ending at 3:00pm. When after-school activities (ASAs) are taking place, school finishes one hour later at 4pm. Please note that ASAs usually run from Monday to Thursday on the South Lake campus and there are no ASAs on the Lakefront Early Years campus. In a normal school day, children enjoy a 20-minute break or play time at 9:40am and a one hour lunch between 11:30 and 1:45pm (Note: Pre-Nursery children go home at 12pm). Depending on the year group, a further break of 15 minutes is given in the afternoon.

### **My child is starting an IGCSE or A-Level programme; do I need to pay anything extra for the one-to-one laptop programme?**

Laptops are provided free of charge to all IGCSE and A-Level students (Years 10 to 13). Laptops will remain the property of the School. Students leaving before A-Level graduation will be given the option of buying the laptop they have been given at a discounted rate (free if owned for 3 years or more). A-Level graduates will be allowed to keep the laptop as they leave the School at the end of Year 13. Please note this scheme is evolving and may be extended to encompass other year groups and other hand-held electronic devices like iPads and iPads Minis.

### **How many hours of Chinese language do you offer a week?**

The British School of Guangzhou is committed to providing a strong Chinese language programme, within the time constraints of the UK national curriculum. Children from the age of 3 have the equivalent of 40 minutes of Chinese each day, differentiated by levels of ability. Within the Secondary school, children may opt to study another language in place of Mandarin.

### **Do I need to pay anything extra for school trips?**

All school residential trips are included in standard tuition fees with almost all other day trips also covered. This includes airfare, accommodation and other expenses incurred through the annual Residential Trips programme. Some subject or class-specific trips, or premium residential experiences, may also be offered to students with a charge applied to cover extra costs.

### **Do I need to purchase 'Apps' to support the iPad programmes operating within some year groups at the School?**

The School will provide an iPad device free of charge for these programmes but parents will be expected to support the initiative with appropriate 'App' purchases via a personal 'iTunes' account. These will be limited to a maximum of approximately RMB500 per year. The school will help to advise on which apps to purchase based on the individual needs of students.

### **Are examination costs included in school fees?**

All examination costs, including external charges for Primary SATs and Secondary IGCSE, AS and A-Level examinations are included in standard tuition fees. These fees will be paid directly by the school to the relevant examination boards.

### **Will my child be able to transfer to another school within the Nord Anglia Education group of schools?**

Yes. Once accepted and attending any of our schools, students can transfer to other schools within our network. Administrative and admissions procedures are greatly simplified, though fees and charges will vary accordingly.

# General Terms & Conditions

**1. Application Process** - Completing an application form does not entitle a student to placement at the School. A place will not be reserved until all entry requirements are fulfilled, which will normally include an assessment to determine the level of English and academic ability of the child. The School reserves the right to refuse admission after the interview and examination.

**2. Quality of Information** - It is vital that parents provide full and accurate information to the school. Any information provided during the application process which is deemed to be incomplete or misleading could lead to the exclusion of a student from the School. In all such cases, the School Principal will have full and final authority.

**3. Application Fee** - The application fee is non-refundable. One application fee is required for every child applying to the school.

**4. Documents Required** - The following documents must be provided by parents:

- A photocopy of the passport of at least one of the parents
- A photocopy of the student's passport
- A fully completed and signed copy of the 'Conditions & Declaration Document'

**5. Payment and Refund of Fees** - The following criteria shall apply to the payment and refund of fees and charges:

- Fees and charges must be paid according to the dates and terms specified by the School
- No refund of fees can be made for absence due to illness or any other causes
- For tuition fees paid termly, no refund is available for early withdrawal
- For tuition fees paid yearly, a refund for early withdrawal will be calculated by discounting from the total fees paid, the termly fee for every term attended (irrespective of whether the student has attended partially or fully in any given term)
- At the discretion of the School, late payment of fees will be subject to a 5% surcharge

**6. Uniform** - The uniforms are to be worn by students in accordance with the School's uniform policy.

**7. School Lunches** - School lunches are compulsory for full-day students. No refund will be provided for days of absence. The School regards lunches as an integral part of the education of the child and of school life in general.

**8. Bus Services** - The School offers an optional bus service. No refund will be available for days of absence. If a child is not going to use the service on any given day, parents should notify the School in advance. If the school bus service is not used then it is the responsibility of the parents to ensure their child arrives at school promptly and is collected according to school hours.

**9. Absence** - If a child is absent from school, parents agree to inform the School of the reason by telephone as soon as possible. On returning to School, children must bring a note from a parent or guardian explaining the reason for their absence.

**10. Standards of Behaviour and Discipline** - Students are expected to behave in a polite and responsible manner throughout their stay at the school, showing respect for the authority of teachers and to fellow students. Strict disciplinary procedures will be enforced for incidents of serious misbehaviour such as bullying, racism or general disrespect to the school or others.

**11. Temporary Suspension or Expulsion from the School** - At the discretion of the School Principal, the School reserves the right to temporarily suspend or expel a child for bad behaviour or non-payment of tuition fees. The same refund policies for absence (in case of temporary suspension) or early withdrawal (in case of expulsion) will apply. Details are highlighted in point 5 of these General Terms & Conditions.

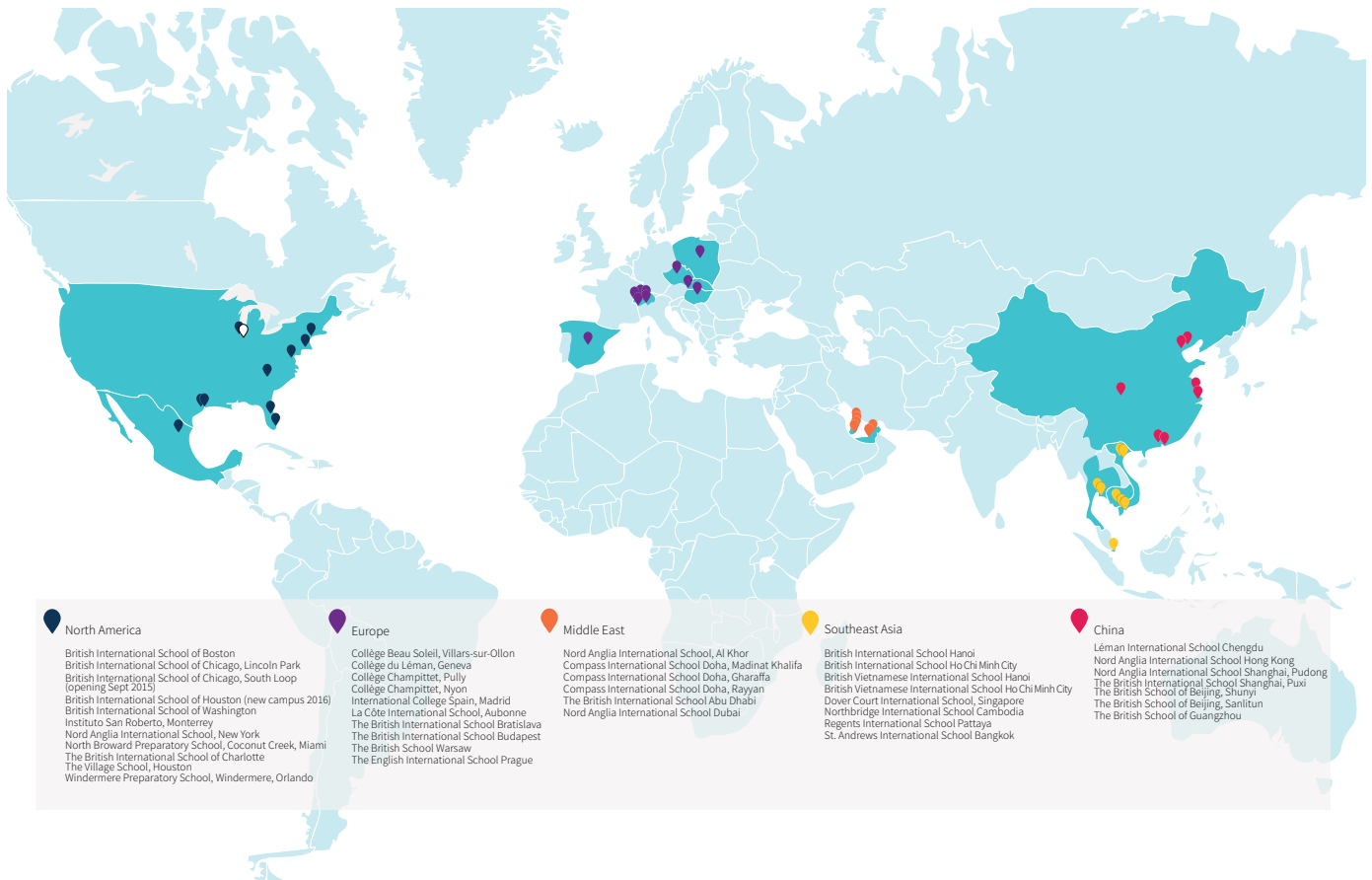
**12. Damage Liability** - Parents are liable for any deliberate damage caused by the child to school property or to that belonging to teachers, employees or other pupils.

**13. School Responsibility** - The school has a responsibility towards the educational progress and well-being of the student body as a whole. The school provides mainstream education and is not able to cater to children with severe learning difficulties. Any student who is not making sufficient progress or whose behaviour over time is having a negative effect on the progress of other pupils may be excluded from the school. The decision to exclude a child from school remains solely at the discretion of the School Principal.

**14. Borrowed Items** - The parents of any student that loses, misplaces or damages items borrowed from the school, including but not limited to school books, laptops/tablets and musical instruments provided by the school, shall be expected to refund to the school 100% of the list value of a new replacement item, irrespective of the age of the item lost/misplaced or damaged.

**15. Use of Student Images, Photographs and Video** - Parents automatically give consent for printed and digital use of images, photographs and video of their child/children to be used in any of the school's printed or digital internal and external publications and advertising. This includes website and press use. This extends to include any school work students create related to their studies.

**16. School Excursion Consent** - School day trips are an integral part of curriculum and school life. Unless written notification is provided to the Admissions Office at the school, it is understood parents consent to their children attending school day trips.



The British School of Guangzhou is a member of Nord Anglia Education (NAE), a world leader in providing premium, innovative education for over 40 years. Educating thousands of students, the Nord Anglia Education family operates more than 40 international schools in 15 different countries.

## High Performance Learning

High Performance Learning is a unique approach to education that inspires all students to become socially and academically confident. Developed by leading educationalists, it combines quality teaching and a premium environment with guided learning, challenges, and a collaborative

approach to study. It is built on the philosophy that every child will reach a high standard with the right support and in the right environment.

## Partner Schools around the World

As a global family of international schools, Nord Anglia Education offers children opportunities to partner with students and teachers from schools around the world. Your family will become part of a community that includes more than 19,000 students in America, Europe, Asia and the Middle East. Direct ties to other cultures and experiences give the Nord Anglia Education family a supportive, diverse connection with the world.



## The Global Campus

The Global Campus initiative provides your child with a unique opportunity to meet and collaborate with students from around the world. Through virtual learning and interaction, your child will learn to respect and understand different cultures, work as part of a team and develop leadership skills. The program includes online learning space, in-school challenges and the chance to participate in international expeditions.

## Nord Anglia University

Nord Anglia University encourages teaching staff to work with their international peers, learning from each other and from a network of global experts. The program gives them the chance to access a global network of education professionals, allowing them to share methods, learn about the latest thinking and develop innovative new approaches to teaching. We offer access to teacher-training conferences, online discussion forums, workshops, and insights into the approaches of some of the world's most renowned experts.

## Academic Success

Great teachers, committed students and an emphasis on hard work have delivered world-class results at every level across our family of more than 30 premium schools. Our schools continue their remarkable academic track record with results that significantly outperform schools around the world.



**NORD  
ANGLIA**  
EDUCATION

*Be Ambitious*







**Contact us**

The British School of Guangzhou  
983-3 Tonghe Road, Baiyun District,  
Guangzhou, 510515

**Email**

[admissions@bsg.org.cn](mailto:admissions@bsg.org.cn)

**School Website**

[www.bsg.org.cn](http://www.bsg.org.cn)

**General Enquiries**

+86 (0)20 8709 4788

