



THE BRITISH SCHOOL
OF BEIJING, SANLITUN
A NORD ANGLIA EDUCATION SCHOOL

School Uniform Guide

Early Years Uniform

SUMMER

Navy polo shirt

Navy shorts



WINTER

Turquoise polo shirt
(long-sleeved)

Navy tracksuit top

Navy tracksuit trousers



No PE uniform required for Early Years children



Primary School - Summer Uniform

GIRLS

Summer dress

Skirt, skirt or summer dress

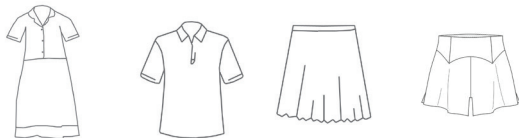
Teal polo shirt



BOYS

Grey shorts

Teal polo shirt



Primary School - Winter Uniform

GIRLS

Pinafore (Y1 - Y3)

Skirt (Y4 - Y6)

White blouse

Navy cardigan

Blazer

Grey trousers (Y1 - Y6)



BOYS

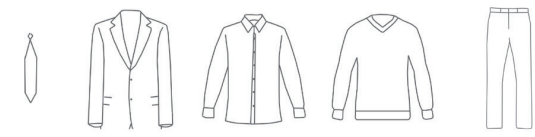
Grey trousers

White shirt

Navy sweater

Blazer

Blue tie



Primary School - PE Kit (Boys and Girls)

SUMMER

T-shirt

Shorts



WINTER

Tracksuit top

Tracksuit trousers

Hoodie
or
Jacket



Other items available from the uniform shop

Compulsory

Homework Bag (Year 1 to Year 6)

Early Years Backpack (Tadpoles to Reception)



Optional

Swimming bag

Summer hat

Swimming costume

PE hat

Sports socks

Vogmask



Footwear

The following items are not available from our uniform shop. Good-quality children's shoes can be difficult to find in Beijing, so we recommend that you bring these with you if you are moving to Beijing from overseas.

EARLY YEARS

Trainers/sneakers/sandals (Summer)

Trainers/sneakers (Winter)

PRIMARY PE (GIRLS AND BOYS)

Non-marking trainers/sneakers

White ankle socks or BSB sports socks

PRIMARY BOYS

Flat black leather shoes (velcro straps, slip-on, shoe laces all fine)

Black socks

PRIMARY GIRLS

Flat black leather shoes (velcro straps, slip-on, shoe laces all fine)

White ankle socks (Summer)

Black tights (Winter)

Flat black leather boots can be worn with the Winter uniform

Notes

School uniform is compulsory attire for all students attending the school. Uniforms can be purchased from the School Uniform Shop located at the Primary Building. Students are expected to arrive at school every day in clean clothes, worn in a tidy manner. Official BSB Sanlitun uniforms can only be purchased from the School Uniform Shop. Other items (such as footwear and socks) can be purchased elsewhere.

At the beginning of the school year, students should attend school wearing Summer uniform. Winter uniform is usually worn from mid-October until the end of March, the school will advise on the exact date depending on weather. These days may change at the discretion of the Principal.

All clothes worn to school (uniform and non-uniform items) should be clearly labelled with the child's name. Lost, un-named clothing and bags are placed in Lost Property. Uncollected items are donated to charity at the end of each school year.

On PE days (two days a week), Year 1 to 6 students should come to school wearing PE kit.

Please note:

- Skirts should be of an appropriate length
- Hair accessories should be kept to a minimum and where possible should be in line with the school colours
- Hair below shoulder length must be tied back
- No jewellery except sleepers or studs in ears
- No make-up, nail varnish, extreme hairstyles or colour