



NISC School Ambition (Vision)

A dynamic **NAE**, **International Baccalaureate** Continuum World
School in South East Asia where everyone succeeds.

"Excellence in everything we do."

27 September 2018

IB - PYP

Transdisciplinary
programme

Constructivist Pedagogy

Inquiry Based Learning

Promotes Student Agency

Students Take Action

Global Citizens - Multiple
perspectives



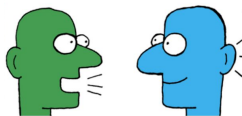
Schoolwide Learner Outcomes

INQUIRERS

We nurture our curiosity, developing skills for inquiry and research. We know how to learn independently and with others. We learn with enthusiasm and sustain our love of learning throughout life.



COMMUNICATORS



We are confident and creative when talking about our ideas. We can express ourselves in many ways. We are learning more than one language and we listen to others.



RISK-TAKERS

We have the courage to try new things. We try to solve problems in many different ways. We are determined and resourceful when facing challenges and change.



PRINCIPLED

We act with integrity and honesty, with a strong sense of fairness and justice, and with respect for the dignity and rights of people everywhere. We take responsibility for our actions and their consequences.



CARING

We have a caring attitude towards people and the environment. We want to make a positive difference in the lives of others and we are sensitive to their needs.

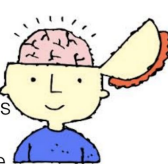
THINKERS

We use critical and creative thinking skills to analyse and take responsible action on complex problems. We exercise initiative in making reasoned, ethical decisions.



OPEN-MINDED

We critically appreciate our own cultures and personal histories as well as the values and traditions of others. We seek and evaluate a range of points of view, and are willing to grow from the experience.



BALANCED

We balance different parts of our lives (minds, bodies and emotions). We are interested and involved in many different things. We understand that taking care of ourselves is important.



REFLECTIVE

We know what we are good at and we know what we need to work harder at to learn. We think about ourselves and the world. We can make changes when possible.



KNOWLEDGABLE

We develop and use conceptual understanding, exploring knowledge across a range of disciplines. We engage with issues and ideas that have local and global significance.



The IB Learner Profile

English	Khmer	Mandarin	Korean
Inquirers	ចេះអង្កេតស្វែងយល់អ្វីដែលថ្មី	探究者	탐구하는 사람
Knowledgeable	ប្រកបដោយចំណេះដឹង	知识渊博的人	지식을 함양한 사람
Thinkers	រិះគិតពិចារណា	思考者	사고하는 사람
Communicators	ចេះប្រាស្រ័យទាក់ទង	交流者	의사소통하는 사람
Principled	ប្រកបដោយសីលធម៌	有原则的人	도덕적인 사람
Open Minded	បើកចិត្តទទួលយកមតិអ្នកដទៃ	胸襟开阔的人	열린사고를 가진 사람
Caring	ប្រកបដោយការយកចិត្តទុកដាក់	富有同情心的人	공감, 동정심이 있는 사람
Risk-Takers	ហ៊ានប្រឈមនឹងហានិភ័យ	敢于冒险者	도전정신 있는 사람
Balanced	ប្រកបដោយតុល្យភាព	全面发展的人	균형잡힌 사람



In your opinion...

Order the ten Learner Profile words from what you feel to be the most important to the least important.



Our Values

We believe in the **active engagement** of the whole community. We believe that **contemporary learning** takes place when we are **creative, collaborative** and **connected**. We also believe that we have a **shared humanity** and we need to demonstrate **compassion** and **ethical responsibility** by **enriching** each other through our **differences**.

"Caring hearts, ambitious minds!"



Our Mission

“Inspiring dynamic, respectful and compassionate global citizens”

An environment of intercultural understanding and integrity. A place where everyone is involved, valued and happy. A hub of innovation, enabling creativity and contemporary learning. A community where individuals succeed and make a difference.

“We are many communities, but we are one”



Learning in our PYP school

Play Based Learning - Early Years

Engaging

Challenging

Creative

Collaborative

Student Choice and Voice

Student Leadership

Outside the Classroom

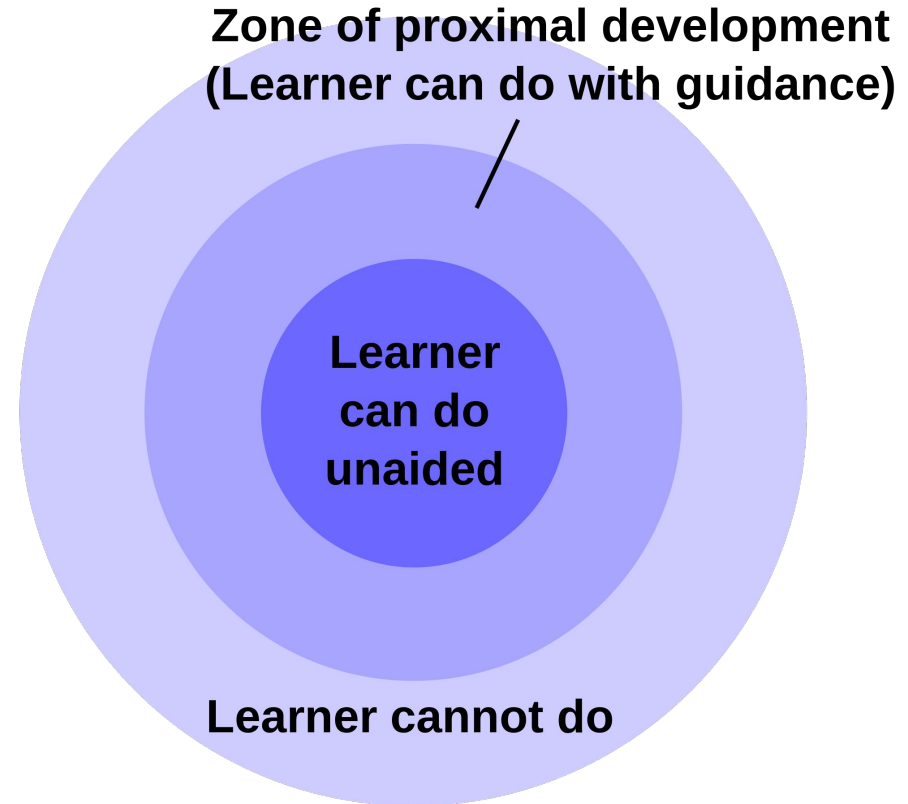
Skill Development - ATLs (approaches to learning)

Conceptual Understandings

Fostering Independence

ZPD - Learning Zone

Support and guide children to construct their own meaning. This supports the development of big understandings that last.





Our curriculum basis

Phonics - Letters and Sounds

Literacy - Lucy Calkins Workshop Model

Maths - Singapore Maths In Focus

More information on the PYP can be [found here](http://www.ibo.org/information-for-parents/pyp-for-parents/)

<http://www.ibo.org/information-for-parents/pyp-for-parents/>



Thank you & Burning Questions

