



School Profile 2017 - 2018

Our Mission

Inspiring dynamic, respectful and compassionate global citizens.

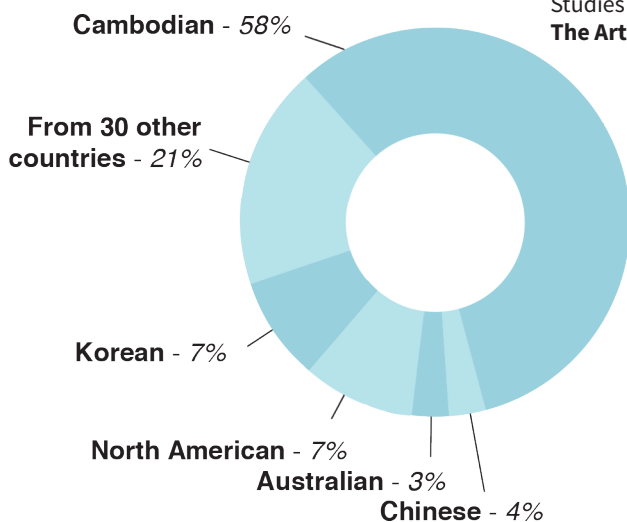
"Caring hearts.
Ambitious minds."

Our School

Northbridge International School Cambodia (NISC) is a co-educational school catering for ages 2 through 18. NISC is an international school that celebrates diversity and this is well expressed in a faculty made up of 22 different nationalities. NISC serves families from expatriate, diplomatic, business, and national communities instilling a truly international mindset. NISC prides itself on developing future leaders that embody the values of the IB. Our students are caring whilst being ambitious and have a strong sense of moral purpose.

School Demographics

Approximately 640 students from 40 different countries are currently enrolled at NISC from Early Learning through Grade 12. There are 284 students from 25 nationalities in High School with 36 students in the graduating class of 2018.



International Baccalaureate Diploma

Students at NISC are encouraged to aim for the IB diploma. Students who choose to pursue the IB diploma, concurrent with the NISC high school diploma, must fulfill the following requirements:

- Take the Theory of Knowledge course and complete the required assessments.
- Complete the programme of CAS activities
- Complete and submit for assessment an extended essay in a subject available for this purpose
- Complete 3 subjects on higher level requiring 240 hours of instruction over the 2 years, and 3 standard level subjects that each require 150 hours of instruction.

Students in the class of 2017-2018

may choose from the following DP courses:

Studies in Language and Literature:

English A Language and Literature, Korean A Language and Literature, Khmer A Literature, Japanese A Literature, Chinese A

Language Acquisition: English B, French B, Mandarin B, Mandarin ab initio, Spanish ab initio

Individuals and Societies: Economics, Business Management, History, Geography

Sciences: Biology, Physics, Chemistry

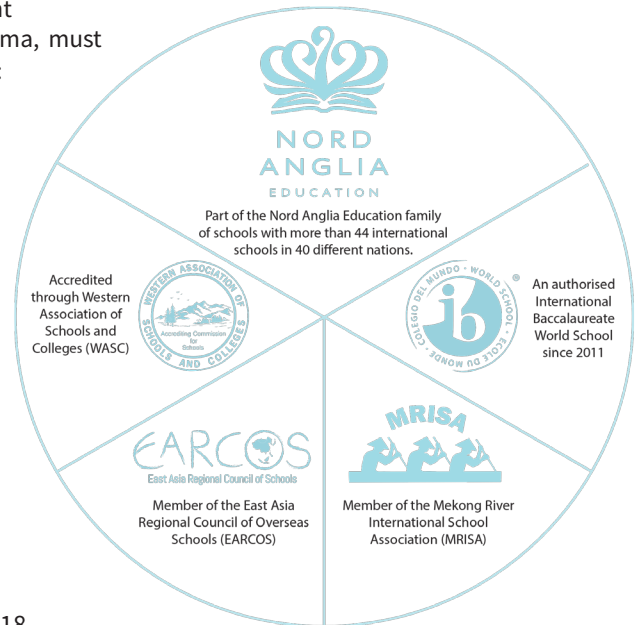
Mathematics: Maths HL, Maths SL, Math Studies SL

The Arts: Music, Visual Arts and Dance

The language of instruction is English, and we offer additional language instruction in French, Mandarin, Spanish, Korean and Khmer.

School Transcripts

NISC's school year is divided into two semesters: August through December and January through June. Semester grades are available mid-December and end of May. NISC transcripts cover Grades 9 - 12.



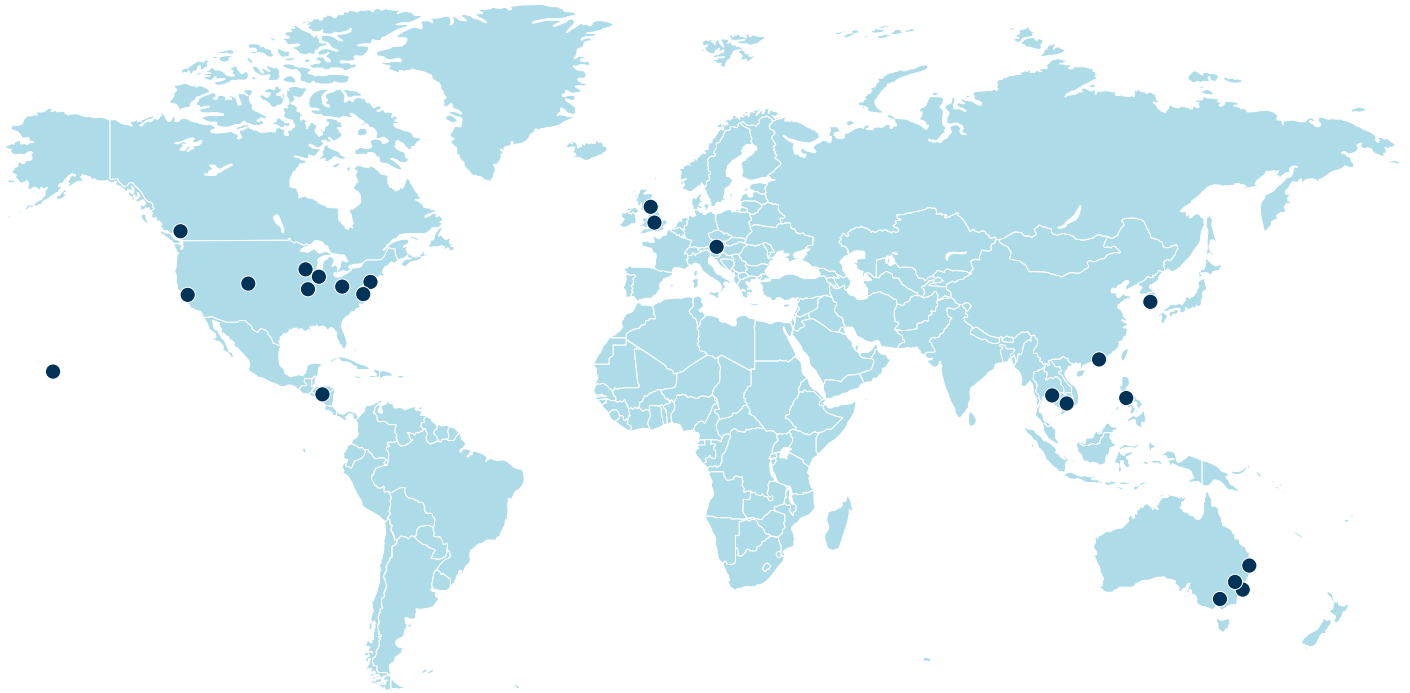
NISC High School WASC accredited diploma option

In the exceptional case where a student is unable to take the DP course examinations, the school will develop a programme of study that includes six IB subjects. If the student meets the NISC graduation requirements they gain a WASC accredited NISC diploma.

How do we determine GPA?

To calculate a student's Grade Point Average (GPA), each semester the IB Scores for each course are multiplied by the course credit values (HL 0.75 and SL 0.5) summed and divided by the sum of the course credit values for that semester. Cumulative GPA is the average of the semester GPA's. Not used in GPA calculations are: Service Learning in Grades 9 & 10; Personal Project in Grade 10; Theory of Knowledge, Extended Essay; and Creativity, Action, and Service in Grades 11 and 12. Only NISC courses are used in GPA calculations.

University Acceptances 2014 - 2017



North America

- California State University - Northridge
- Indiana University - Wilmington
- Irvine Valley College
- Northeastern University (Boston)
- Temple University (Pennsylvania)
- University of California - Berkeley
- University of California - Santa Barbara
- University of Colorado - Boulder
- University of Illinois - Chicago
- University of Michigan
- University of Wisconsin - Madison
- Santa Monica College (Los Angeles)
- Universidad Catolica de Honduras
- New York University
- University of Hawaii at Manoa
- Suffolk University
- University of British Columbia

Europe

- London College of Fashion at University of the Arts
- Lancaster University, United Kingdom
- City University of London
- London South Bank University
- University of Birmingham
- University of Bristol
- University of Lincoln
- University of Greenwich
- University of Kent
- University of London, Birbeck
- University of London, Royal Holloways
- University of Nottingham
- University of Reading
- University of Winchester
- Johannes Kepler University Linz

Australasia

- Hong Kong Polytechnic University
- Hong Kong University of Science and Technology
- SP Jain School of Global Management, Sydney
- Hong Kong University
- Webster University, Thailand
- Raffles International College, Cambodia
- Enderun College, Manila
- RMIT, Australia
- Sungkyungwan University, Seoul
- Ehwa Women's University, Seoul
- Monash University, Australia
- University of Technology Sydney
- Queensland University of Technology
- University of Hong Kong
- Blue Mountains International Hotel Management School, Australia
- University of Sydney
- Yongsei University
- Korea University

96%

of NISC graduates continue their education at university

1 in 3

NISC graduates are accepted to Top 50 universities (Times Higher Education Rankings)

93%

of NISC graduates go to universities outside of Cambodia