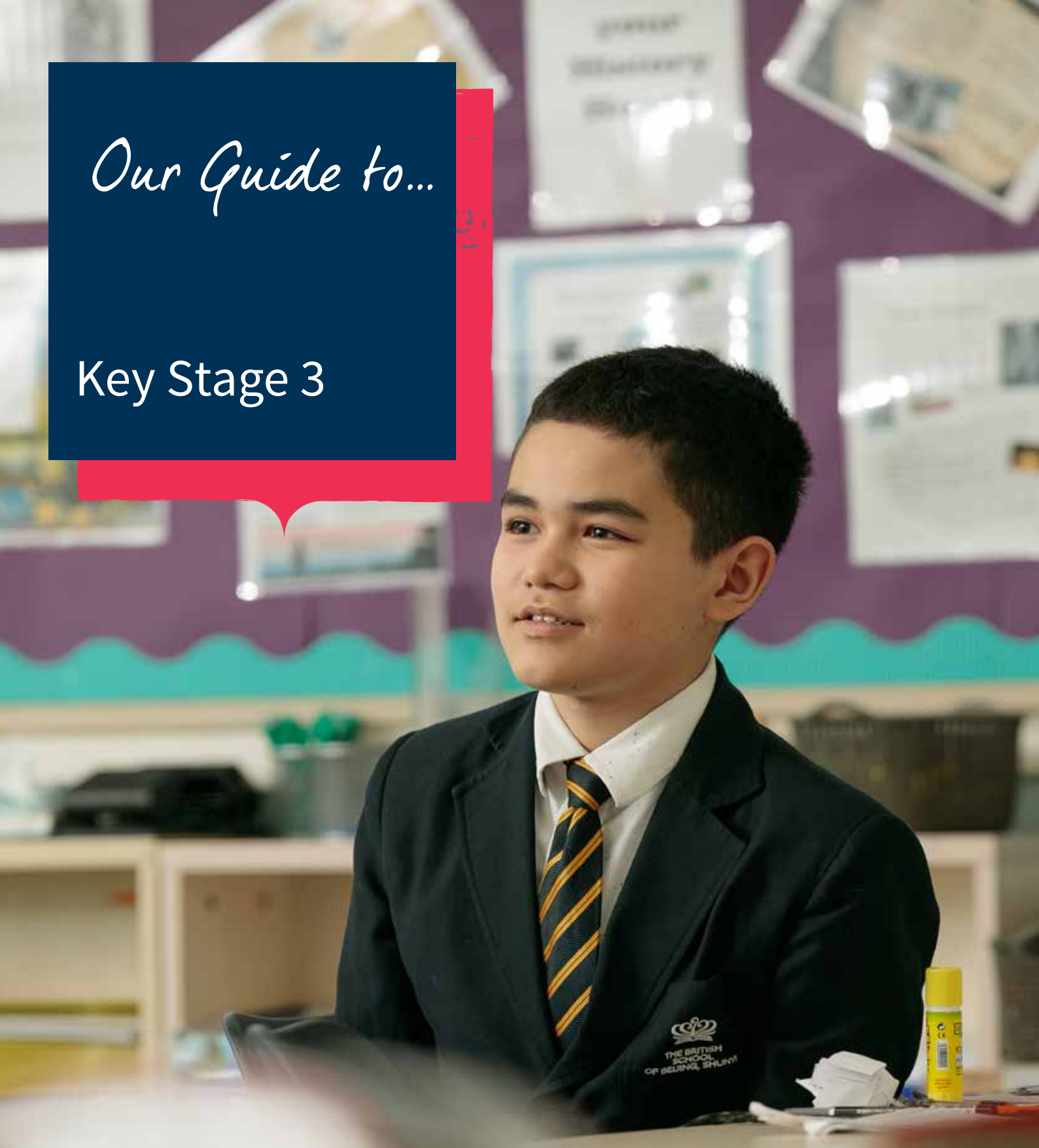


Our Guide to...

Key Stage 3



**THE BRITISH SCHOOL
OF BEIJING, SHUNYI**

A NORD ANGLIA EDUCATION SCHOOL

Content

5	Overview & Philosophy
6	Pastoral Care and Guidance
7	Assessment
9	Preparing students for the world stage
9	Our Global Family
9	Developing Socially Conscious Students
9	Helping your child invent the future
10	Art
10	Music
10	Drama
11	English
11	EAL
12	Native German
12	Mandarin
14	Geography
14	History
16	Computer Science
16	Maths
16	Science
18	Design & Technology
18	Physical Education

*We believe that no-one
has a limit to their
potential or ability.*





Overview & Philosophy

In KS3, you will study a wide range of subjects. We want you to get to grips with the variety of subjects on offer; to see what they are like when you study them as separate courses, taught by specialist teachers who are real enthusiasts for their own subjects.

In the language programme, you will have time to study two languages, and you will need to choose the two you want to study. For the first language, you can choose between Mandarin or 1st Language German (Native Speakers). For the second language you can choose between French and Spanish.

We teach some of our subjects in sets, where you will be in a class with other people who are about the same ability level as you in that subject. This is how we organise Mathematics, English, Science and Foreign Languages.

We teach the remainder in mixed ability groups, so that you study other subjects such as History, Geography and Art in your form group. In mixed groups, the work is differentiated so you will be challenged at your own level, allowing you to reach your full potential.

We find that the balance of setting and mixed ability works well for most students, as it gives you the right opportunities to progress as fast as possible and allows you to mix with more people than if you were just with your form group the whole time. We will keep an eye on whether or not you are in the right set and we can move you if necessary.

All the subjects you will study are described in this course guide but, as always, ask us if you would like to know more about any of them.

Pastoral Care and Guidance

At BSB we aim to ensure that students thrive in a safe and secure environment. Our Heads of Year and Form Tutors play key roles in this.

The Head of Year is central in caring about each student and monitoring their progress both academically and socially. They aim to encourage involvement, commitment, and high standards of work and behaviour.

Form Tutors are important first points of contact for parents and students. Students will see them at least once a day for registration and for an additional assembly or PSHE lesson each week and over time they build strong relationships with the students in their form.

Pastoral care and guidance

At times students may experience feelings or situations that they may find difficult to discuss. During these times experienced staff are on hand to give students guidance and advice in a setting that allows them to feel comfortable and open.

Assessment

All subjects will use a variety of assessment techniques throughout the academic year, including peer and self-assessment, teacher assessment of group and individual work and marking of formal tests. We set students targets for the academic level we believe they can achieve, and regularly report progress to parents against those targets.

It is the hallmark of the British curriculum that our achievement levels are benchmarked against progress in thousands of schools across the world, which means that we can ensure that every student attains the highest levels possible, and parents can be kept very well informed of this progress.

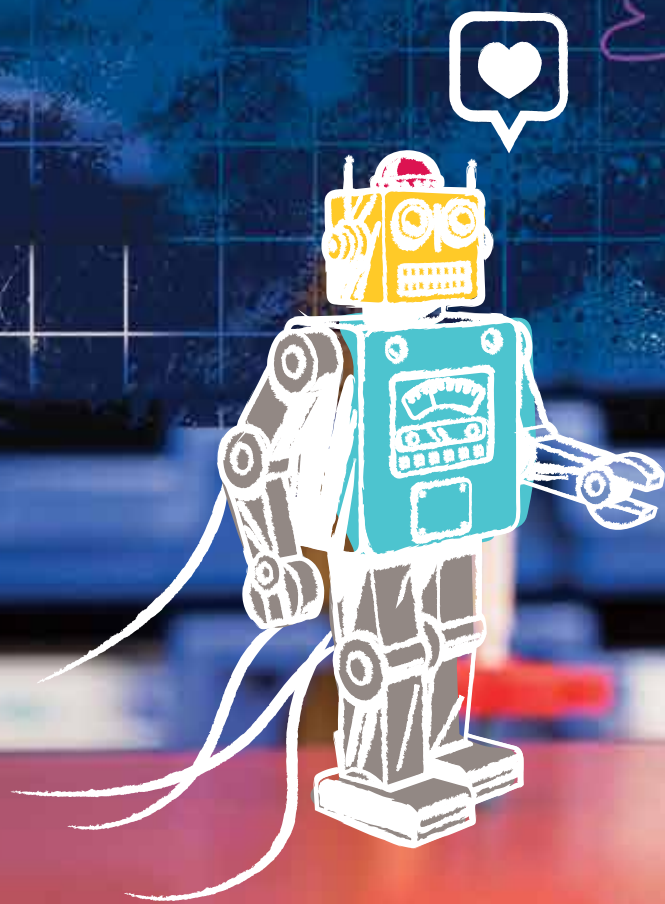
Our assessment system is based upon structured feedback, specific to an individual that guides their future progress, as opposed to simple right/wrong grades. Above all, we recognise that assessment serves three audiences – it tells the student what they are achieving and how to improve; the parents how your child is progressing and how we can help them improve and the teacher what they need to do to ensure even greater achievement for your child. All our assessment is designed carefully with that end in mind.

Your children may be given end of topic/unit tests in some subjects which help to reinforce the learning covered in class. They will also sit end of year tests in subjects during exam week in May. On entry to the school they will sit a test in English and Mathematics, along with general ability (the Cognitive Ability Test) that provides us with a base line from where we can track individual progress throughout their time in the school.



Our assesment programme helps to track student progress throughout the year





Learn from the best

Ambition inspires people to rise up to the challenge and to achieve the extraordinary. Ambition will take you anywhere you want.

We believe that:

- There is no limit to what we can achieve
- Creativity and challenge help us get better every day
- Learning should be personalised
- Unique global opportunities enhance the learning experience



Preparing students for the world stage

The Juilliard-Nord Anglia Performing Arts Collaboration

Music can play a transformational role in children's education. The Juilliard-Nord Anglia Performing Arts Programme has been designed to give students a deep engagement with performing arts - promoting cultural literacy, creativity, critical thinking and collaboration.

Our embedded arts curriculum begins with music. Your child will be drawn into a Juilliard-curated repertoire comprising twelve core categories that encompass a wide range of genres, styles and cultures. Each of the 12 categories is exemplified by an iconic work

supplemented with carefully curated extension works, enabling your child to explore different elements of music and its role in our society.

Our Global Family

As part of a family of 60+ Nord Anglia schools around the world, our students have the opportunity to participate in a range of unique

global and regional experiences and expeditions with over 64,000 other Nord Anglia students. This provides unique life and learning experiences

that help our students to develop into mature and successful global citizens.

Developing Socially Conscious Students

UNICEF is challenging Nord Anglia Education students to raise awareness of the Sustainable Development Goals (SDGs) and to

work with their local communities to create solutions for these global issues. The challenge is part of the World's Largest Lesson, a global

initiative aimed at bringing the SDGs to classrooms across the world through lesson plans, videos, comics and creative content.

Helping your child invent the future

Massachusetts Institute of Technology (MIT) STEAM Collaboration

Science, technology, engineering, arts and mathematics (STEAM) play an invaluable part in helping your child to develop academic, social and personal success. Through practical, hands-on problem solving, your child will develop transferrable skills such

as creativity, curiosity, resilience, resourcefulness, collaboration and confidence to help pave the way to a wide open future. We have collaborated with the Massachusetts Institute of Technology (MIT) to bring a new approach to learning the

interdisciplinary subjects of STEAM. Through in-school challenges, an annual visit to MIT, and specialised training for our STEAM teachers, we put your child at the vanguard of developing skills for the 21st century.



Art, Music & Drama

ART

Art at Key Stage 3 is a very important period for you, our artist. For it is during this time that you are introduced to a range of new, exciting disciplines and ways of working. You will develop your skills in all of the fundamental areas of art, as you learn how to work with a variety of media from pencils to paint, charcoal to clay.

You will journey through time and around the world, looking at the artwork of different artists and cultures. You will learn about the styles and techniques that they used in their works and how you can use them to create your own masterpieces.

MUSIC

Music is a unique form of communication that can change the way you feel, think and act. It is an integral part of culture, past and present. It can help you understand yourself, relate to others and develop your cultural understanding, forging important links between home, school and the wider world.

Studying Music at BSB encourages you to be ambitious and have an active involvement in different forms of music-making, allowing you to develop critical skills: your ability to listen, to appreciate a wide variety of music and to make judgments about musical quality. You will develop the core skills of performing, composing and listening through exciting, challenging, and fun-filled activities.

You also have the opportunity to pursue individual music lessons with our Individual Music Programme or participate in school ensembles for extra-curricular activities. These are optional extras as part of BSB's Music programme and only enhance the learning experience.

DRAMA

Drama lessons provide opportunities for students to create, perform and respond to drama. Active participation helps to develop the self-confidence and communication skills so valued by future employers. Students study and practically explore different genres, styles and aspects of performance such as theatre history, devising skills and interpreting text.

English

We believe that fluency in English will help you to be ambitious academically, by providing you with the foundation skills needed to be successful in all of your school subjects and to gain fluency in one of the most widely understood languages in the world.

EAL

English as an Additional Language in KS3 is for students whose language level needs development before undertaking the intensive study of English offered by the English department.

In Key Stage 3, if you fall below the level of B1 on the Common European Framework of Reference for Languages (CEFR) in any of the major skills of reading, writing, listening and speaking, you are then required to take English as an Additional Language. In order to graduate from the EAL programme, you must achieve a Pass Merit in the Cambridge Preliminary English

Test (PET), which assures a full B1 level and indicates a level of independence which will allow you to begin a successful study of English literature.

Research shows that successful language learning requires exposure to natural language and a focus on form. By attending BSB, language learners receive a wide exposure to authentic English in all of their subjects.

In EAL classes, you focus on the form of the English language, learning its usage and grammar and focusing on developing skills

proficient in reading, writing, speaking and listening. You will be challenged to develop critical thinking skills and understand different perspectives, in order to form your own opinions and ideas. You will gain the confidence that is needed to be ambitious personally.

in reading, writing, listening and speaking by using targeted materials that are at your level and which increase in complexity along with your improvement. There are two EAL classes in each year group and these are decided by level. Students move between the classes based on their rate of progress.

As well as EAL classes, the EAL department work with subject teachers on strategies and materials to help EAL students access the curriculum. We also run a Homework ASA where you can come and receive help on work in other subjects or further English language practice.



Whether you are a native speaker or just a beginner, we will help you to develop your skills using a wide range of print and digital resources. You will read both fiction and non-fiction texts written by a range of authors from different time periods, genres and cultures. This includes poetry, short stories, plays, novels, speeches, websites, newspaper and magazine articles. You will learn how to identify an author's purpose and audience, and develop an understanding of the author's craft.



Native German & Mandarin

GERMAN

Our German programme is for native, or near native speakers and students will be assessed by our German teacher to be eligible for the programme.

German lessons focus on the contents of the German Curriculum as well as on the needs of students of an international school. The German Curriculum consists of reading literature and informing texts, essay writing, grammar, speaking and listening skills, matching style to audience and purpose.

As a Native German Speaker you will be well prepared to return to German Schools and to graduate with an International Graduation Certificate later in Key Stage 4.

You will use the “Deutschbuch”, Cornelsen Verlag, book and workbook and there will be internal

written and oral exams throughout the year.

MANDARIN

Mandarin Chinese is spoken by more than a billion people, making it the most widely spoken first language in the world. Living in Beijing means we are able to utilise our environment to maximise the learning you will have.

Non-Native Mandarin

If you study Mandarin as a Foreign Language, you will work to develop a good command of the basics in the four main skill areas: reading, writing, speaking and listening. You will develop an interest in the subject as you find that you can apply what you learn in class to everyday practical situations. You will understand class instructions and dialogues and use them to communicate in a more descriptive

way. You will also be able to read and understand texts, and, with the understanding and support of Pinyin, you will gain access to a wider range of written material.

Native Mandarin

If you are a native speaker of Mandarin, you will work to develop good listening skills and appropriate ways of speaking. Your knowledge of characters, grammar and literary language will be enhanced and you will be able to write for a variety of purposes.

You will be able to use Pinyin as a helpful tool to gain access to a wider range of written materials, and you will start to develop the skills to understand and appreciate classic Chinese literature. You will also start to be aware of variations in the use of Mandarin in different areas of the world.

Second Language French & Spanish

Learning a modern foreign language is increasingly important in a global economy and also has great value in terms of cultural and linguistic richness in our society.

At BSB, you will learn the language based on real-life situations. As you progress, you will learn to communicate on a wide range of topics. From introducing yourself to learning how to cope in French/Spanish city, you will gain P. 12

invaluable skills which will prove immensely useful in later life.

By the end of KS3, as you prepare to start your IGCSE course, you will have learned to express yourself in the past, present and future tenses.

As part of our “Be Ambitious” philosophy, we like to offer opportunities to our students to use the language they learn for real purposes. In collaboration

with some of our sister schools, we set up a pen pal network as part of a Global Campus project. In the past, we linked with schools located in Vietnam, Prague and the United States. Thanks to our Global Campus platform, our students were able to “converse” on a specific topic and find out about each other’s cultures.



Geography

The Geography Curriculum at KS3 has been designed to give you an understanding of places at a range of scales, a mix of both physical and human processes and how they impact on our lives.

There is a focus on geographical skills, ranging from maps to evaluative skills, which prepares you effectively for Geography at GCSE and IB level. There is an

emphasis on challenging students, so that you are engaged to make excellent progress.

While studying Geography, you will be treated to a unique and ambitious curriculum, studying a range of topics, from waterfalls to earthquakes, volcanoes to air pollution, in diverse settings, from Kazakhstan to Zambia, Himalayas to Death Valley. You will enhance

your geographic skills, while learning about our wonderful and ever changing world. The course is designed for you to question your place in the world and develop your international mindedness as a global citizen.



Geography students have the opportunity to study outside of the classroom with a number of field trips in Beijing.



History

At Key Stage 3 we teach about the social, cultural, religious and ethnic diversity of the societies studied and the experiences of men and women in these societies. You will have opportunities to use a range of historical sources including documents, artefacts, pictures and photographs, music, buildings and sites.

You will be exposed to a range of cultures and experiences beyond your own life – this helps

to promote understanding and tolerance.

One of the most crucial aspects of understanding history is trying to see the past on its own terms. Too often we place modern values on top of the past and therefore fail to understand why people acted in the way they did. This curriculum challenges your own beliefs and values and creating development as a global citizen.



Computer Science, Maths & Science

COMPUTER SCIENCE

The Computer Science course in KS3 is primarily aimed at developing an understanding of hardware and software creation and development in addition to using applications you will find useful in other subjects. It is a very practical course, with a little fun on the side, through which you will become proficient in a range of software very quickly.

You will learn about programming using Python and Scratch, computer networks, game making, HTML, CSS + Java script as well as understand hardware and use the latest technology such as 3D printing.

By the end of KS3 you will use a wide range of ICT independently and efficiently to combine, refine, interpret and present information that you have taken from a range of different sources.

MATHEMATICS

Mathematics gives you the tools to discover and describe the world around you. You will already have a sense of how important numbers and shapes are to our everyday lives and you will begin to learn that mathematical thinking can help to solve many different kinds of problems.

You will see how mathematics can be creative through exploring patterns which we find all around us. If you enjoy science you will be able use what you learn to gain a better understanding of how scientific ideas work. If you have a passion for music or art you will start to see and explain different types of mathematical structures that have an impact on both of these subjects, such as geometric patterns.

In Years 7, 8 and 9, your teacher will help you to further your understanding of the main concepts in mathematics; number and algebra, geometry and measures, and statistics. Mathematics becomes more than solving problems at this stage and your teacher will help you to understand many new ideas, including how to communicate mathematically and how to explain your discoveries effectively.

SCIENCE

Our science lessons are designed to encourage you to be ambitious and to develop the skills that you will need to be successful in science. They will help you move towards a higher order of thinking, enabling you to develop skills in application, analysis, synthesis and evaluation.

Science fires your curiosity about how the world around you works and offers you opportunities to find explanations and answers. You will connect your own practical experiences with scientific ideas as you experiment in Physics, Chemistry and Biology, and discover that our knowledge of science is based on what scientists have found out from their experiments.

In your science lessons your teacher will work with you in the three main aspects of science: Biology, Chemistry and Physics. You will start to see what each of the sciences is about and learn about the skills and ideas that they all share.



Design & Technology & Physical Education

DESIGN & TECHNOLOGY

The Design & Technology department at The British School of Beijing is a continuously evolving and thriving department, committed to offering opportunities for you to achieve your full potential. Our aim is to offer a wide range of different and interesting projects, focusing on every aspect of Design & Technology. The department believes that there is no limit to what you can achieve, allowing you to experiment and take risks in a safe and positive learning environment.

Design & technology is an inspiring, rigorous and practical subject. Using creativity and imagination, you will design and make products that solve real and relevant problems within a variety of contexts, considering your own and others' needs, wants and values. You will acquire a broad range of subject knowledge and draw on disciplines such as Science, Technology, Engineering, Art, Mathematics (STEAM) and computing. You will learn how to take risks, becoming a resourceful, innovative, enterprising and capable global citizen. The subject combines practical and intellectual skills with an understanding of aesthetic, technical, cultural, health, social, emotional, economic, industrial and environmental issues. Working P. 18

in stimulating contexts that draw on the local ethos, community and wider world, you will evaluate present and past design technology, and its uses and effects.

Design & Technology is about providing opportunities for you to develop your capability, combining designing and making skills with knowledge and understanding in order to create quality products. You will combine practical and technological skills with creative thinking (academically ambitious), by learning to become a self-motivated and confident learner (personally ambitious), who can think creatively, solve problems as an individual and members of a team (socially ambitious).

PHYSICAL EDUCATION

The Key Stage 3 PE curriculum at the British School of Beijing, Shunyi aims to offer you the opportunity to develop into a physically active, independent and creative thinker who is able to work effectively in teams as well as individually.

You will develop skills and knowledge to enable competitive game play. The broad and balanced variety of activities that we offer is part of the school's "Be Ambitious" philosophy which encourages you to evaluate your strengths and weaknesses in order to become an

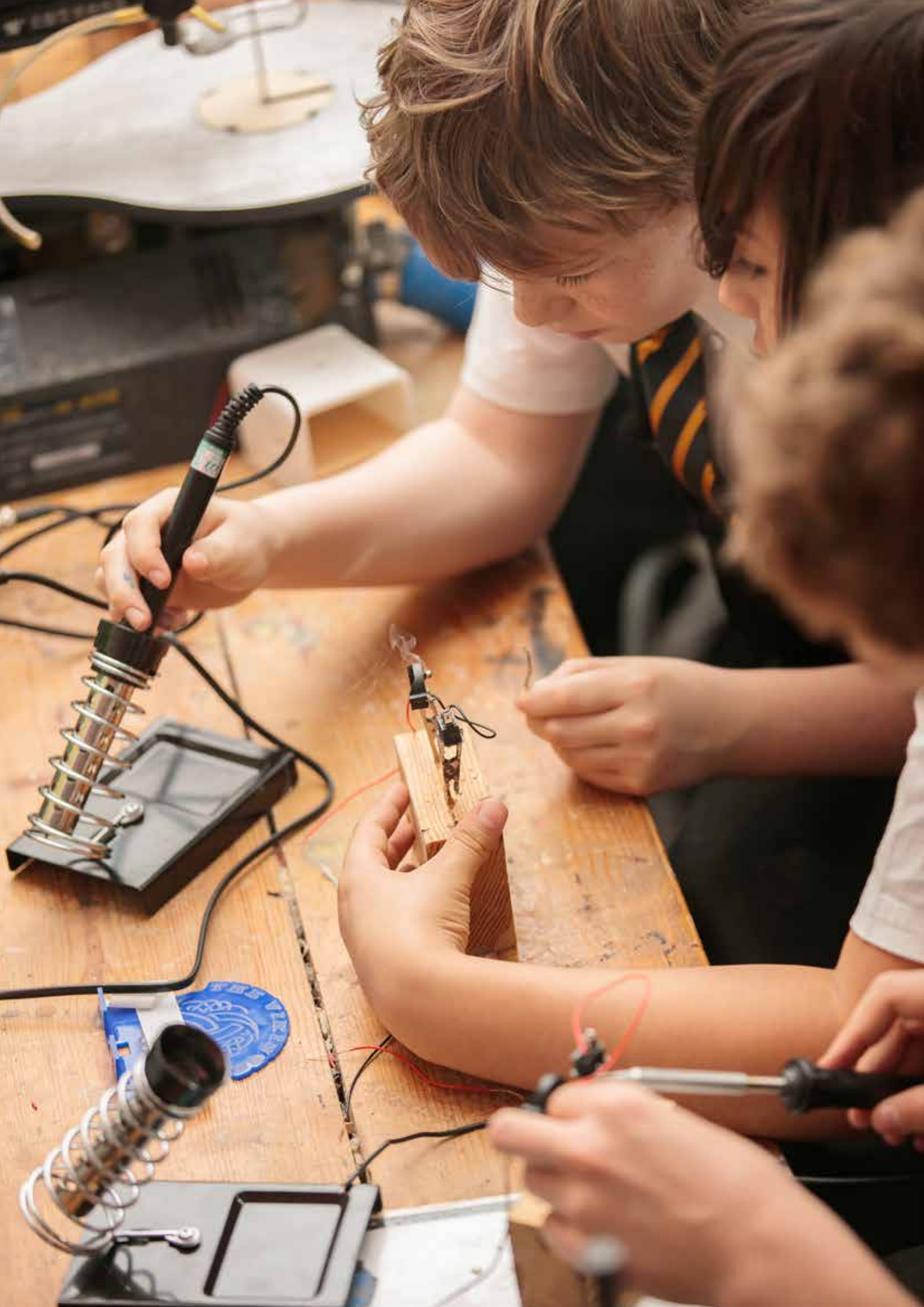
effective participant in a range of sports.

All students will take part in two hours of curriculum PE per week and will study a minimum of nine sports across the year in four week blocks with regular House competitions after each unit of work.



Units of Study include:

- athletics
- basketball
- badminton
- health related fitness
- football
- rugby
- rounders
- netball
- swimming
- softball
- table tennis
- volleyball



Contact us

The British School of Beijing Shunyi
South Side, No. 9 An Hua Street, Shunyi District, Beijing, China
101318

Email

admissions@bsbshunyi.com

Phone

+86 (0)10 8047 3558

Find out more

[bsbshunyi.com](https://www.bsbshunyi.com)