



*A Levels at
Regents
Sixth Form
2022-23*



**REGENTS INTERNATIONAL SCHOOL
PATTAYA**
A NORD ANGLIA EDUCATION SCHOOL

Be Ambitious Be Regents

Contents

Message from the Head of Secondary	4
A Levels at Regents	5
Question and Answer	7
Subject Offering for 2022	8
Future Ready Programme	17
Approaches to Teaching and Learning	17
Programme Overview	18
Expectations of Sixth Form Students	19
University Destinations	21



Ms Amos Turner-Wardell Head of Secondary

It is a pleasure to welcome you to our A Level Programme Guide.

This is always an exciting time as students enter their final chapter of schooling before they start university. The A Level at Regents offers the opportunity for students to be fully prepared for the knowledge and the personal qualities required to succeed in university and beyond.

Our Secondary teaching staff are all experienced A Level practitioners. Together, with the experience of the global Nord Anglia Education network, MIT, Unicef and Juilliard Programme, we are confident that our students will excel in their journey. As students part of Nord Anglia, we want to ignite their curiosity and encourage them to be ambitious and create their own future.

Our students will have to be very organised, motivated, and work to the best of their ability. They will need to maintain a positive frame of mind, be open to new ideas and willing to undertake new challenges and develop their skills. It will be a journey from being a school student to becoming a young adult, ready and able to use their unique talents and strengths to fulfil a positive role in society.

It is our aim at Regents to ensure that the A Level Programme is a time of opportunity and achievement for all our students. With our proven track record of working with students and universities around the world, we know that our students will be better prepared for university than anywhere else.

This guide aims to provide information to help you get started on the A Level Pathway and to outline what is expected from the students and school.

The sixth form at Regents is based on the foundation that we are all part of a globalised and integrated world; it is designed to equip these young adults with an education that allows them to live and to succeed in this rapidly changing environment.

A Levels at Regents

What are A Levels?

A Levels (Advanced Levels) are two year courses, in a range of subjects, usually offered at post-16 level. Students typically take three subjects; this pathway gives them the opportunity to specialise in a relatively small number of subjects at the age of 16. They are a qualification that is trusted and recognised by universities and employers around the world.

There are two types of A Level:

- Linear route: culminates in an examination at the end of the 2 years of study.
- Modular route: available outside of England, students sit AS exams at the end of Year 12, which is a qualification in its own right. These count towards the final A Level. Students can then complete their A2 exams at the end of Year 13, in order to achieve the full A Level. This is useful if you only want to study for 1 extra year before moving on to higher education.

How are A Levels graded?

A Levels are graded using a scale of A* (highest) to E (minimum), where E is considered a pass grade. AS levels are graded on an A to E scale.

What subjects are on offer at Regents?

Final course offerings will be decided based on the amount of interest for a specific course:

Art and Design

Biology

Business

Chemistry

Design and Technology

Mathematics

Physics

Psychology

Physical Education

Why choose A Levels at Regents?

A Levels allow students to explore their three best subjects. However, at Regents they will also gain the skills to prepare them for university and beyond.

Through our Future Ready programme students will be able to develop their academic reading and writing, their research skills and participate in our community service projects; all these elements will support their university applications, a process that they will be guided through by our experienced staff.

Our **Personalised Pathway** to the top universities

IBDP & A LEVELS



Some Questions Answered

Are there prerequisites for entry into the Sixth Form at Regents?

Students entering the sixth form at Regents need an English level of at least B1 and evidence of successful completion of two years of high school study (IGCSE, American curriculum, Thai curriculum, Russian curriculum etc.). Previous study in an English-speaking curriculum is preferred as it allows for more academic English development, but it is not required.

Can I change subjects if I find I don't like a particular subject?

Students are advised to choose subjects very carefully. Changing subjects on a whim is unacceptable. Changes at the end of the induction week in August are accepted, special cases only will be considered up to October half-term.

How many periods per week do you need for each A Level?

Each A Level subject is allocated 8 periods a week. It is common for the teaching to be split between two subject teachers; each teacher delivers particular course units.

How much private study should I do?

This, of course, depends on many factors such as how conscientious you are, how quickly you work, how efficient you are in your study habits, how much reading around a subject you wish to do, and so on. However, as a rule, if you wish to be successful in the A Level programme you will need to spend a minimum of 3 hours per week of private study for each subject.

How much coursework is there?

Some A Level subjects have a coursework component, but the relative importance of coursework in contributing to your final grade varies from subject to subject. Your teachers will explain the assessment requirements clearly to you at the beginning of the course.

Will they have classes mixed with IBDP students?

Yes, for Growing Minds, registration, and Core PE. The A Level specific classes will only have other A Level students in the class.



Subject Options

Art and Design

Exam Board: Pearson Edexcel International

Contact: Clare Spear clare.spear@regents-pattaya.co.th

Overview

A level can be followed through the broad-based title of Art, Craft and Design or through one of five endorsed titles: Fine Art, Graphic Communication, Textile Design, Three-dimensional Design or Photography.

All titles explore practical and critical / contextual work through a range of processes and media. Students undertaking all titles are expected to engage with sustainable materials and production processes in the construction of work and the potential of collaborative working methodologies in the creative process.

As for IGCSE, there are four assessment objectives: record, research and investigate; critical connections; development of skills and exploration of media and visual language; production of a personal final outcome.

Assessment

Component 1: Personal Investigation 60%

(Internally set, assessed by the teacher and externally moderated.)

Component 2: Externally Set Assignment 40%

(Externally set, assessed by the teacher and externally moderated.)



Biology

Exam Board: Pearson Edexcel International

Contact: Tamika Daley-Bacchus Tamika.Daley-Bacchus@regents-pattaya.co.th

Overview

The Pearson Edexcel International Advanced Level in Biology is a modular qualification. The Advanced Subsidiary qualification can be claimed on completion of the International Advanced Subsidiary (IAS) units. The International Advanced Level can be claimed on completion of all the units.

You should choose this subject if you have an interest in how the human body works, how to combat diseases, how DNA controls the cells or how organisms interact on Earth. An A Level in Biology is very useful if you are considering continuing your studies in the field of Biology at university. A degree in Biology is a versatile stepping-stone to many fields of work and study such as medicine, pathology, and agriculture.

You will develop your knowledge and understanding of Biology by applying the concepts in this specification to a range of different problems, set in a variety of contexts. You will need to apply mathematical skills to the problems and develop your practical skills. This specification includes 18 core practical activities, which is the minimum number of practical activities that you will carry out.

Assessment

Assessment consists of three written papers at IAS level that are externally assessed. The International A Level consists of three further written papers that are externally assessed. There is no coursework component.



Business

Exam Board: Pearson Edexcel International

Contact: Rachel Perry Rachel.Perry@regents-pattaya.co.th

Overview

The Pearson Edexcel International Advanced Subsidiary in Business and the Pearson Edexcel International Advanced Level in Business are modular qualifications. The Advanced Subsidiary can be claimed on completion of the International Advanced Subsidiary (IAS) units. The International Advanced Level can be claimed on completion of all the units (IAS and IA2 units).

The International Advanced Level consists of the two IAS units (Units 1 and 2) plus two IA2 units (Units 3 and 4). Students wishing to take the International Advanced Level must, therefore, complete all four units.

Unit 1: Marketing and people

Unit 2: Managing business activities

Unit 3: Business decisions and strategy

Unit 4: Global business

Assessment

Each unit is externally assessed with an examination, which is taken modularly in the January and June exam sessions. Each exam is 2 hours and equally weighted out of 80 marks.



Chemistry

Exam Board: Pearson Edexcel International

Contact: Tamika Daley-Bacchus Tamika.Daley-Bacchus@regents-pattaya.co.th

Overview

The Pearson Edexcel International Advanced Level in Chemistry has a flexible, modular structure comprising six units. The Advanced Subsidiary qualification can be claimed on completion of the International Advanced Subsidiary (IAS) units. The International Advanced Level can be claimed on completion of all the units.

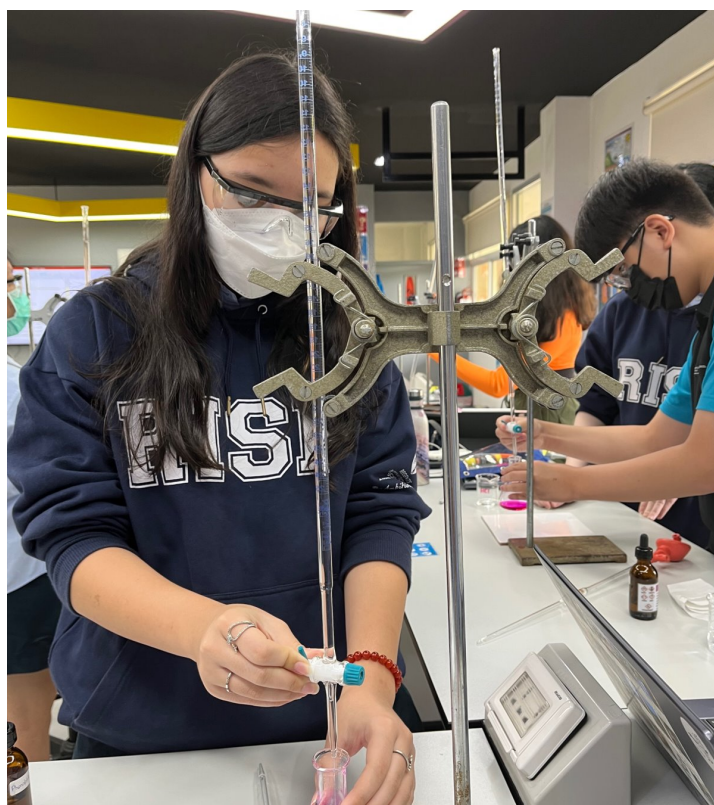
The course aims to stimulate interest in and enjoyment of chemistry, to foster imaginative, logical and critical thinking, to demonstrate the wider application of chemical knowledge, showing appreciation for social, environmental, economic and technological contributions to society. It integrates theory and experimental work, developing investigative and manipulative skills. Students are encouraged to develop their scientific communication skills through research, discussion and written work.

In Chemistry, students will study aspects of chemistry that are often in the media and affect their lives. It is important that students have the necessary knowledge and understanding to explain many different aspects of contemporary chemistry. These areas include: climate change, green chemistry, pharmaceuticals and chemistry research. These contexts are given as examples within the units, so they can be updated or expanded upon by teachers.

The content of this course includes the fundamental key concepts of chemistry needed for progression into higher education and employment. However, it has been streamlined to allow students enough time to study the units in depth. This ensures that the teaching and learning experience is enjoyable.

Assessment

Assessment consists of three written papers at IAS level that are externally assessed. The International A Level consists of three further written papers that are externally assessed. There is no coursework component.



Design and Technology

Exam Board: Pearson Edexcel International

Contact: Clare Spear clare.spear@regents-pattaya.co.th

Overview

A Level Design and Technology equips students with design skills for the future. Students will be able to recognise design needs and develop an understanding of how current global issues, including integrating technology, impact on today's world. At A Level students will have the confidence to innovate and produce creative design solutions as they develop their own design brief with a client/end user.

Assessment

Consists of one externally examined paper and one non-examined assessment component.

Component 1: Principles of Design and Technology *Written examination: 2 hours 30 minutes 50% of the qualification*

Component 2: Independent Design and Make Project *Non-examined assessment 50% of the qualification*



Mathematics

Exam Board: Pearson Edexcel International

Contact: Kit Watson Kathryn Watson@regents-pattaya.co.th

Overview

The Pearson Edexcel Advanced Level in Mathematics qualification has a modular structure and consists of six externally-examined units. Students will study:

- 4 compulsory units – Pure Mathematics 1, 2, 3 and 4 – these units cover Algebra and functions, Coordinate Geometry, Trigonometry, Calculus, Proof, Sequences and series, Exponentials and Logarithms, Numerical methods, Binomial expansion and Vectors.
- A choice of 2 of the following units – Statistics 1 and 2, Mechanics 1 and 2, Decision 1.

The Advanced Subsidiary qualification can be claimed on completion of Pure Mathematics 1 and 2 and one of the optional units.

The Edexcel Advanced Level in Mathematics qualification is designed to help students develop their reasoning and generalisation skills, extend their range of mathematical skills and apply them in unstructured problems, understand how different areas of mathematics connect to each other and to other fields of study, apply mathematics to 'real-world' problems, use technology effectively, communicate their mathematics effectively and take increasing responsibility for their own learning.

Assessment

Each unit is externally assessed with an examination taken modularly in January and June exam sessions. Each exam is 1 hour 30 minutes and equally weighted out of 75 marks.



Physics

Exam Board: Pearson Edexcel International

Contact: Tamika Daley-Bacchus Tamika.Daley-Bacchus@regents-pattaya.co.th

Overview

The Pearson Edexcel International Advanced Level in Physics has a flexible, modular structure comprising six units. The Advanced Subsidiary qualification can be claimed on completion of the International Advanced Subsidiary (IAS) units. The International Advanced Level can be claimed on completion of all the units.

Physics is a natural science that involves the study of matter and its motion through space and time, along with related concepts such as energy and force. More broadly, it is the general analysis of nature. Physics intersects with many other areas of research. New ideas in physics often explain the fundamental mechanisms of other sciences, while opening new avenues of research in areas such as mathematics and philosophy.

Physics also makes significant contributions through advances in new technologies. For example, advances in the understanding of electromagnetism or nuclear physics led directly to the development of new products which have dramatically transformed modern-day society, such as television and computers.

You should take this subject if you have an interest in engineering, how things work and how things interact. An A Level in Physics is very useful if you are considering continuing your studies in any engineering area at university. A degree in Physics is a stepping-stone to many fields of work and study, for example civil engineering, aeronautical engineering, mechanical engineering or marine engineering.

Assessment

Assessment consists of three written papers at IAS level that are externally assessed. The International A Level consists of three further written papers that are externally assessed. There is no coursework component.



Psychology

Exam Board: AQA Examination Board

Contact: Andrea Kokotovic Andrea.Kokotovic@regents-pattaya.co.th

Overview

Psychology explores why we behave the way we do. It helps us to understand the human mind and gives us insight into the motives behind our actions. The **AQA psychology A level** is an introduction to many aspects of this and gives an insight into this fascinating subject.

During the two years of study you will cover extensive research methodology units which give an overview of conducting research, ethics, data collection and analysis as well as statistical testing to determine significance of findings.

You will study the major approaches within psychology which includes a large section on biological psychology as a reflection of modern, science-driven psychology. Additionally, you will also get an introduction to several core topics with the field including human memory, attachment, social influence and psychopathology.

The main benefits of taking Psychology A level are:

- It improves research and communication skills
- it helps you to understand others
- it gives you a better memory
- it promotes independent thinking and analysis/synthesis skills

During the two years of study, students will cover extensive research methodology units which give an overview of conducting research, ethics, data collection and analysis as well as statistical testing to determine significance of findings.

They will study the major approaches within psychology which include a large section on biological psychology as a reflection of modern, science-driven psychology. Additionally, you will also get an introduction to several core topics within the field including human memory, attachment, social influence and psychopathology.

Assessment

There are 3 equally weighted papers:

Paper 1: Introductory topics in Psychology

Paper 2: Psychology in Context

Paper 3: Issues and Options in Psychology



Physical Education

Exam Board: Cambridge International Examinations

Contact: Oliver Farley Oliver.Farley@regents-pattaya.co.th

Overview

The Cambridge International AS & A Level Physical Education syllabus is both practical and theoretical and is a logical follow-on from IGCSE PE. As well as fostering enjoyment in physical activity, it encourages students to develop an understanding of the interaction between theory and practice by focusing on the performer and performance.

Students learn about anatomy, physiology & movement skills as well as advanced study of exercise, physiology and the psychology of sport performance. In addition, they examine the study of the Olympic Games from a global perspective.

Assessment

2 written papers comprising 70% of the total

Practical performance in two sports chosen from a wide selection, including an action plan for improvement in one sport and an analysis of live performance.



Future Ready Programme

Our FUTURE READY PROGRAMME will be taught by English and IBDP specialists and will prepare students to be able to read and write academically at a high level; it will develop their critical research skills and reflect on the nature of knowledge and will teach them how to have purposeful inquiry into different types of knowledge.

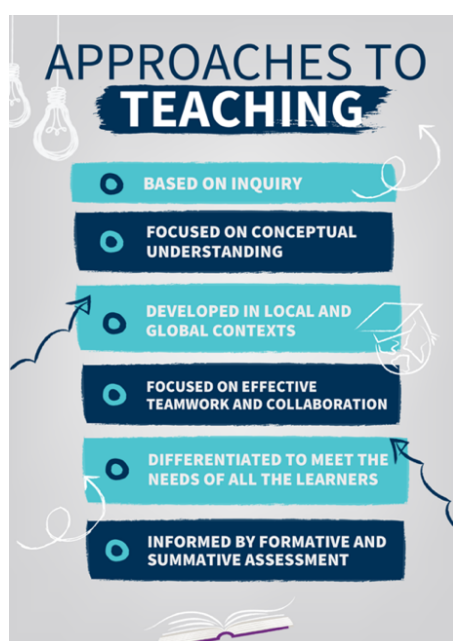
Based on sound pedagogical practice and teaching methods set out by the International Baccalaureate Programme it will endeavour to teach students how to inquire, have conceptual understanding and develop those critical research skills which will enable them to be a success at university.

The key focus to prepare them by:

- Encouraging Independent Inquiry
 - Nurturing an open mind
- Developing Self-Management Skills
 - Encourage a global outlook

The Growing Minds Programme, alongside the Future Ready Programme, is specifically designed to prepare students for university and beyond. They will do aspects of service work and reflect on this, but also this time will be used to prepare for university applications, interviews and moving away from home for the first time.

Approaches to Teaching and Learning



Approaches to Teaching and Learning cont..

The way we teach and the way we train students at Regents to access the knowledge and skills they need is different to other A Level programmes. We teach them based on sound pedagogical research, which enables students to make connections and think for themselves in ways they did not think possible. This will enable Regents' A Level students to develop the skills to be a success at university.

How will the overall programme look?

Students will follow the same daily structure as all other students in the school. They will be expected to attend PE, CCAs and Growing Minds like all secondary students.

Monday	Tuesday	Wednesday	Thursday	Friday
Registration	Registration	Registration	Registration	Registration
Option A	Option C	Option B	Option B	Option A
Option A	Option C	Option B	Option B	Option A
Option C	Option A	Study Time	Option C	Study Time
Option C	Option A	Study Time	Option C	Study Time
Future Ready	Study Time	Option A	Future Ready	Option B
Future Ready	Study Time	Option A	Future Ready	Option B
PE	Option B	Option C	Study Time	Growing minds
PE	Option B	Option C	Study Time	Growing minds



Expectations of Sixth Form Students

Registration and Growing Minds

A Levels are a challenging academic programme which requires a high level of commitment for the students undertaking it. Students are required to maintain attendance levels of at least 90% and to be punctual to registration at 8:20. Their tutor is responsible for supporting them through their studies and is the main point for information relating to their studies and the school in general. In order to help the students become effective learners, we have a structured Growing Minds programme which is delivered by the tutor in a weekly tutor period.

Residential Trips

We undertake residential trips at the start of both Year 12 and 13. Both of these trips are considered compulsory requirements for Sixth Form students. The focus is on understanding the requirements of the CAS programme and learning how to record CAS involvement through Managebac. In addition, important work is covered to help students become an independent learner.

University Application

Regents International School Pattaya supports students through their application to university wherever their destination. The University Counsellor with support from other members of Regents' faculty will help students write personal statements, gather recommendations, produce transcripts, and put together

application packets. The school also offers the SAT and SAT Subject Tests at several points during the year. There will also be many visits from university representatives and visits to university fairs depending on interest and schedules. At the students' requests, the University Counsellor will also help in the university search and provide counselling on next steps. We have alumni studying around the world in countries as diverse as the UK, USA, Canada, Australia, New Zealand, Spain, Netherlands, Singapore, Korea, Hong Kong and China.

Homework and Study time

Students are expected to develop independent learning skills throughout the course as they prepare themselves for life at university. On average, successful students will spend between 13 and 18 hours per week on their study. This work will include set homework tasks; extended projects and assignments; recapping, revising and reflecting; wider reading and preparatory study. It is important that they develop good, regular work habits, have a quiet organised environment in which to work and maintain good eating and sleeping habits.

BYOD

We do expect students to be independent learners and develop their critical research skills outside of the classroom, it is essential that all students in our

Post 16 have their own laptop so they are able to work independently during their study time.

PE

It is important that the year group develop a sense of belonging and mutual support network. In order to assist in this, we hold a compulsory PE/Sports lesson each week. This session uses sports for fun to build team spirit, to give students an opportunity to "let off steam" and to help develop healthy living habits. All students are required to attend unless they have additional timetabled classes.

Dress Code

Sixth Form students do not wear school uniform but wear business dress. In summary, boys are required to wear tailored (not casual) shirt (long or short sleeved, long sleeves may not be rolled-up), tie and trousers and girls are required to wear tailored blouse (not t-shirt) and skirts. All students should wear sensible leather shoes. As a guideline, students should consider the dress worn by employees in traditional professional occupations such as banking and law offices. A copy of the complete Dress Code will be issued alongside the start of year arrangements.

Co-Curricular Activities Programme (CCAs)

The school's Co-Curricular Activities programme runs throughout the week during all three terms and is an expectation for all students. We encourage all Sixth Form students to choose their activities carefully (and early) and to make full use of the programme to support their CAS

requirements and to help develop their sporting, arts or performing interests. Students are required to participate fully in their activities and non-attendance at activities is treated in the same way as non-attendance to a lesson.

Transportation

School policy does not allow students to drive themselves and

others to or from any school-organised event. Students with a Thai driving licence may drive to and from school but are not allowed to drive on campus.



University Destinations

Our students are well prepared to move on to study a variety of academic disciplines at prestigious universities across the world. One in 3 will attend a top 50 university. These are just some examples of our students' university destinations.

United Kingdom

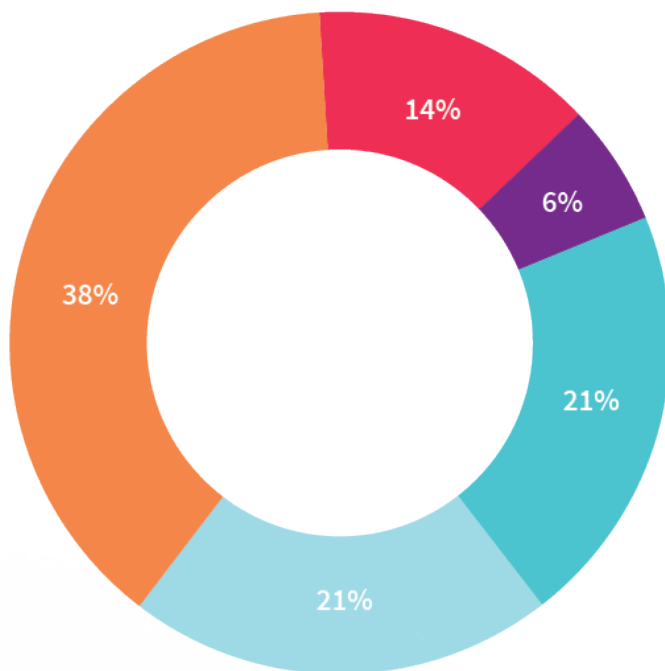
- University College London
- University of Durham
- University of Edinburgh
- University of Glasgow
- Kings College London
- University of Leeds
- University of Manchester
- Newcastle University
- University of Nottingham

Europe

- Erasmus University Rotterdam
- Delft University of Technology
- Les Roches International Hotel Management
- Fonty's University of Applied Sciences
- Leiden University
- University of Maastricht

North America

- University of California Los Angeles Film School
- Purdue University
- University of Toronto
- University of British Columbia
- McGill University
- Hult International Business School
- Ryerson University
- MacEwan University



■ UK
 ■ Asia
 ■ Europe
■ North America
 ■ Australasia

Asia

- Hong Kong University
- Sri Venkateswara College of Engineering
- Taylor's University
- Korea Advanced Institute of Science and Technology
- Korea University
- Yonsei University
- Mahidol University
- Hong Kong University of Science and Technology
- James Cook University

Australasia

- Curtin University
- Edith Cowan University
- Melbourne University
- Monash University
- University of Queensland
- Griffith University Australia
- University of Auckland



Notes

Notes

Contact us

Regents International School Pattaya
33/3 Moo 1, Pong, Banglamung
20150 Chonburi, Thailand

Email

Admissions@regents-pattaya.co.th

School Website

www.regents-pattaya.co.th

General Enquiries

+66 (0) 38 418 777



**REGENTS INTERNATIONAL SCHOOL
PATTAYA**

A NORD ANGLIA EDUCATION SCHOOL

Be Ambitious Be Regents