



THE BRITISH SCHOOL
OF BEIJING, SHUNYI
A NORD ANGLIA EDUCATION SCHOOL

Introduction of Secondary School 中学介绍

Part I 第一部分
Jim Hartland 中学副校长



Secondary School 中学



In this session, we're going to try and anticipate any questions or concerns you may have.

在本次说明会主要针对您可能会关心的问题探讨



Please feel free to stop or interrupt with any questions at any time.

如果您在会议过程中有任何问题可以随时提出

Who's who? 中学团队简介

Head of Secondary

(Mr. Khan) is responsible for the running of the Secondary school

高中校长（Khan先生）负责中学部的日常运营

Assistant Head (Pastoral)

is Mr. Hartland who is responsible for the overall care and wellbeing of students in the Secondary school

助理校长（德育）Hartland先生负责协助中学学生良好适应中学生活以保持身心健康

Assistant Head (Curriculum)

is Mr. Mumford who has overall responsibility of organizing the subjects taught in secondary

助理校长（课程）Mumford先生主要负责组织中学科目教学

Assistant Head (IB)

is Ms. Donnelly who is responsible for running the IB programme in Year 12 and 13

助理校长（IB）Donnelly女士负责12-13年级IB项目的日程运行

The Head of Year 7 is responsible for the daily health and wellbeing of students in Year 7

七年级年级组长负责该年级学生的日常身心健康管理

Tutor Groups 班级

- All students will be rearranged into new form groups next year.
每学年开始时，学生们都会重新分配班级
- We will discuss the most appropriate groups with the Year 6 teachers.
分班时我们会与6年级老师充分沟通为孩子们分配合适的班级
- We will also discuss which children may need some extra support or care so we are aware.
同时关注需要特别辅助的学生。



Form Tutor 班主任老师



- The form tutor will be the person who meets and registers the students each morning. They will see their form for about 15 minutes.
班主任老师每日早晨与学生见面，并记录本日考勤。
- The form tutor will give out messages, check planners and ensure that the students are ready for the day ahead.
班主任老师负责沟通信息，检查家校沟通日志，确保孩子们做好上课准备。
- After registration, the students will follow their timetable and go to the correct classroom for their lesson.
考勤结束后，学生需到正确的教室按自己的课表上课。
- They will have different teachers for each subject and usually, they will only see their form tutor in the morning or for PSHE.
中学各科目由不同教师负责，通常他们只在早晨记考勤时，或者个人、社会和健康教育课时见到班主任老师。
- Please be aware that the form tutor will not be able to help directly about your child's academic progress but they will be able to direct your enquiries.
班主任老师可能无法为您的孩子在学业上提供直接辅导，但是可以将学生们的问题转达给相关负责人。

Head of Year 年级组长



- The Head of Year supports the form tutors.
年级组长辅助班主任工作。
- If there is a larger problem such as a behavioural or learning issue, the Head of Year will become involved.
年级组长将参与解决比较严重的纪律或学业问题。
- This would include emotional or behavioural issues.
这包括情感和行为表现问题。
- It would also include repeated problems such as frequently forgetting homework or being disruptive in class.
还包括频繁出现的问题，例如总是忘记作业，经常上课不遵守纪律等。
- The Head of Year will deal with most issues directly, but if they feel it is more serious, they will contact you to meet directly to discuss it.
年级组长一般情况下会直接介入解决问题，但是如果他们认为情节比较严重也会直接联系家长。

Planner 家校沟通日志



- Each student will get a book on the first day of school called a planner.
每位学生都会在开学第一天拿到一本家校沟通日志(记事本)
- The students will write their timetable in their planner so they know where to go and at what time.
学生们将课表抄在日志上作为上课时间和地点的提醒。
- They will also be expected to write their homework in their planner. This is to help organization and allow parents to check.
我们也希望学生将作业记录在日志上，家长通过日志了解自己孩子的作业内容。
- The planner also contains the school rules such as uniform code.
沟通日志上也包括校规内容，例如着装规定等。
- The form tutor will check the planners each week. We ask parents to sign it to check their child is doing their homework.
班主任老师每周检查沟通日志，我们希望家长能在孩子完成作业后在日志上签字。



Student Expectations 要求

- Be punctual: do not be late for the bus, lessons or ASAs
准时：坐校车，上课，课外课不要迟到
- Wear their school uniform neatly 保持校服整洁干净
- Complete their homework on time 按时完成作业
- Be responsible: look after their textbooks, organise their time, talk to people if they need help or are worried about anything
有责任心：带好课本，合理安排时间，帮助需要帮助的人
- Have the proper school equipment 爱护学校财物
- Use and look after their planner that should be signed weekly by parents and tutors
充分利用并保管好家校沟通日志，每周都应有家长和班主任老师签字
- Use and look after their locker and keep it tidy 爱护个人储物柜，保持柜子内外整洁
- Have their PE kit only on days they need it 体育服装只在体育课时穿着
- Take part in form, year or house competitions
参与班级，年级和学院间的比赛活动



Top Students 成为优秀的学生



The best students in BSB get involved and there are MANY things they can do:
北京英国学校最优秀的学生参与很多活动，包括：

- ASAs 课外课
- Extensive sport program 课外体育项目
- Charity work 慈善活动
- Debate clubs 辩论俱乐部
- School TV reports 学校电视报道
- STEAM week STEAM周
- Book week 图书周
- World Scholar's Cup 世界学者杯
- MUN 模拟联合国



There are activities and opportunities throughout the year. Students who engage with these activities are ALWAYS the ones that achieve better results and develop their social skills.

以上为每年的活动设置，通常参与活动的学生在社交技能上都会有显著提升。

Reward System 奖励机制

- Our new reward system is in place this year that allows students to earn and spend House Points.
最新的奖励机制已于今年就绪，学生可以通过挣得学院积分的方式获得奖励。
- When a student reaches 20, 40, 60, 80 and 100 House Points, they choose from a list of rewards.
当挣得的学院积分达到20, 40, 60, 80, 和100的时候，学生们就可以从获奖奖品单上选取奖品
- They also receive a certificate. This is signed either by the form tutor, Head of Year, Assistant Head, Head of Secondary or Principal.
学生获得的证书由班主任老师，年级组长，助理校长或中学校长签署。
- This encourages students to save and plan, as well as work hard to achieve House Points. Our new reward system is in place this year that allows students to earn and spend House Points.
奖励机制鼓励学生积累、计划并且通过努力获取更多学院积分。新的奖励体系使得学生得以赚取并且消费学院积分。



Rewards 奖品

The prizes were selected by our student council last year. Some examples are:
去年学生会选取的奖品包括但不限于以下物品：

- a. A snack from our student run SnackShack
学生运营商店中的小吃
- b. BSB pencil case/calculator/pen/eraser
英国学校铅笔盒、计算器，笔，橡皮
- c. A BSB memory stick
BSB U盘
- d. A hoodie or t-shirt designed by the student
由学生设计的帽衫或者T恤衫
- e. A family meal at a restaurant of the family's choosing
免费家庭聚餐



ASA Programme 课外课

We have a long list of ASAs each season that students can choose from and are frequently trying new ideas. Some examples include:
每一季的课外活动，同学们的选择都很多，同时新的项目也会不断地加进来。
例如：

- Anthropology 人类学
- Physics Olympiad 物理奥林匹克竞赛
- 4x4 robotic design 4x4 机器人设计
- Football, baseball, basketball, volleyball, badminton
足球，垒球，篮球，排球，羽毛球
- Website design 网页设计
- Fashion Design 时装设计
- Chess 国际象棋



Student Council 学生会

Each year, we appoint the following student positions:

每年我们都会选取学生担任以下职位：

- Form Rep to represent the form
代表班级的班代表
- Year Rep to represent the year
代表年级的年级组代表
- House Captain to represent the House
代表某一个学院的学院长
- Eco Rep who try to improve our sustainability
推动可持续发展概念的环保代表
- School Prefects who work to support students and teachers
领袖生，辅助老师和学生们
- Head Boy and Head Girl who represent the school in a variety of different way
学校男生代表和女生代表分别在学校不同活动中担任不同代表角色



PSHE 个人、社会和健康教育

Our PSHE programme is always evolving to try and react to student needs. We look to teach skills and raise awareness in topics not included in our curriculum.

个人、社会和健康教育项目一直关注学生需求。本科目不在考试科目大纲中，但我们并没有因此减少在这一课题上的技能培训和关注

- Diet- 饮食
- Mindset – 思考方式
- Empathy – 同理心
- Social Media and Wechat – 社交媒体及微信
- Global Identity – 群体认同
- Sleep – 睡眠
- Wellbeing – 身心健康
- Conservation – 保护
- Animal Rights – 动物权利
- Prejudice – 偏见
- Discrimination – 歧视
- Conflict Resolution – 矛盾处理
- Trust – 信任
- Leadership – 领导力
- Road Safety – 道路安全
- Cooking – 烹饪



Pastoral Support 德育支持

- PSHE – 个人，社会和健康教育
- Heads of Year – 年级组长
- Positivity – 积极性
- Check in sessions – 上课签到
- Self help pack (websites and videos) – 自助包
(网站及短片)
- Support ASAs – 课外课支持
- Dedicated email account – 分配邮件账号
- Student First Contacts – 学生的第一联系人
- Lunch clubs – 午餐俱乐部



Transition Events 过渡期活动



- **Step Up Day (Year 7 lessons)**
升级日 (7年级课程)
- **House Debate with Year 7**
学院辩论 (与7年级)
- **Science Day (Visit to Science Museum with new tutors)**
科学日 (与新班主任参观科学博物馆)

Our Promise 我们保证

To monitor the health and safety of all students
关注所有学生的安全健康

To contact parents if we have concerns about their child's wellbeing or academic
发现身心及学业问题后及时联系父母

To provide students with a wide variety of opportunities to get involved in extra-curricular activities
为学生提供大量课外课

To work with parents to help students overcome any difficulties they may have
家校合作帮助学生克服困难

Question & Answers
问答时间



Questions for you 请思考以下问题

- What are you most worried about in joining Secondary?
升入中学后你最担心什么?
- What are you most excited about in joining Secondary?
升入中学后什么让你最开心?
- What do you think will be the biggest difference between Primary and Secondary? 你觉得中小学最大的不同是什么?
- What will you miss the most about Primary?
你最怀念小学的哪些方面?
- What happens if you are naughty in Secondary school?
淘气了会在中学受到什么惩罚吗?
- What happens if you are good in Secondary?
表现好在中学有什么奖励吗?
- Do you think the teachers will be scary in Secondary?
中学的老师很吓人吗?
- What are the residential trips like in Secondary and when do they happen? 中学出游活动是怎样的? 什么时候开始?
- Can you eat sandwiches in Secondary?
升入中学后能吃三明治吗?



Break Time



Introduction of Secondary School

中学介绍

Part II 第二部分

Darren Mumford 中学副校长



Objectives of this Presentation 导览

- **Curriculum 课程体系**
- **Phases of Education 教育阶段**
- **Assessment/recording/reporting and feedback
评估/记录/报告及反馈**

Our Curriculum - "Broad and Balanced" 我们的课程体系 - “广泛&平衡”

- Our curriculum is derived from the best of British Educational experience, adapted to the needs of our international student community and our context in China.

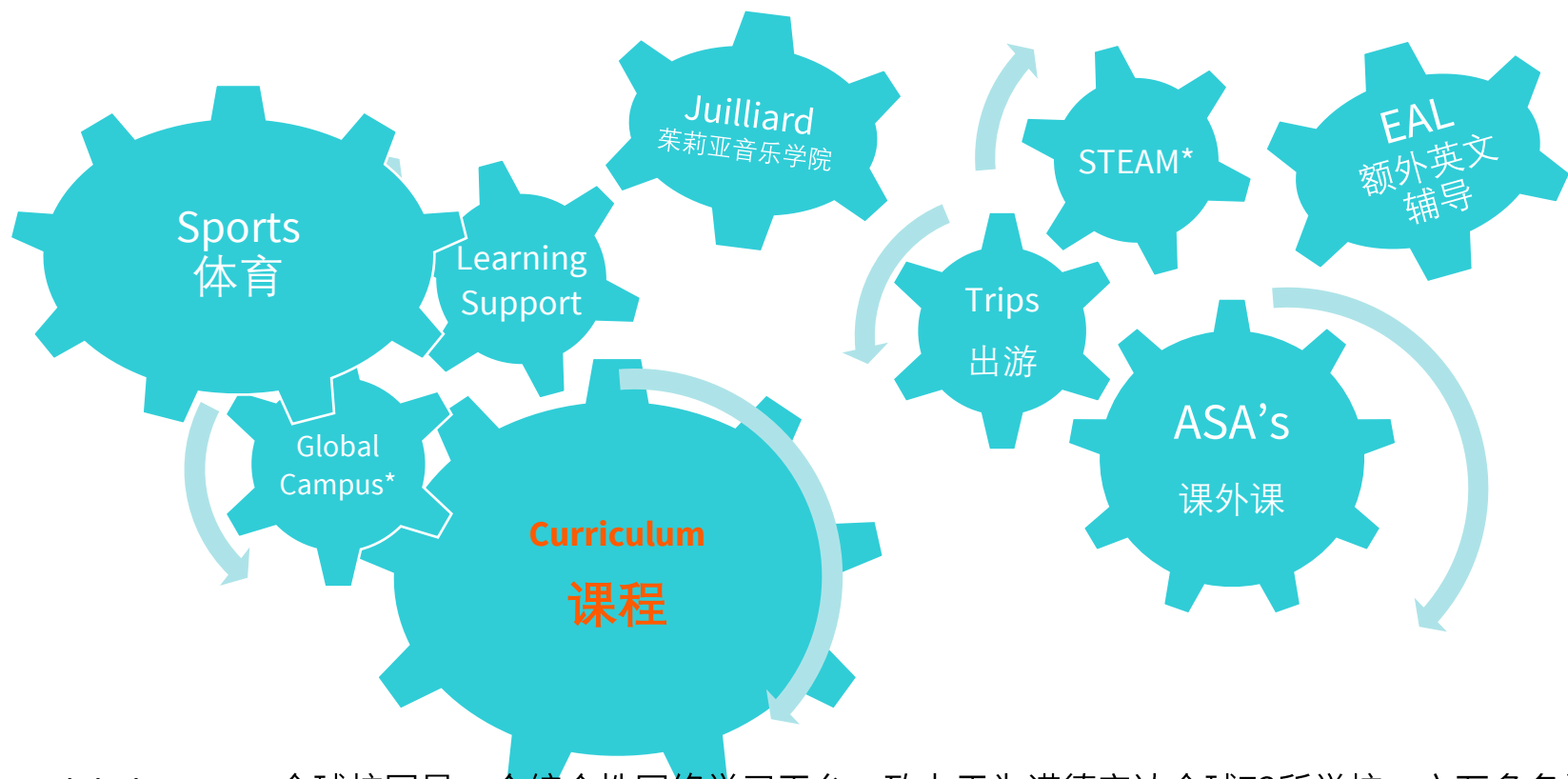
我们的课程源于英国最好的教育经验，并与国际学生的需求和中国的具体实际相结合。

- Our curriculum is designed to provide the highest academic quality throughout your child's education.

我们的课程设计为在您孩子的整个教育过程中提供最高的学术质量。



Learning Opportunities 学习机会



*Global Campus 全球校园是一个综合性网络学习平台，致力于为诺德安达全球73所学校，六万多名学生建立沟通的桥梁，营造良好的国际化教学环境，并赋予他们全球性的视野与资源。

*STEAM课程，是指由科学(Science)、技术(Technology)、工程(Engineering)、艺术(Art)、数学(Mathematics)等学科共同构成的跨学科课程。

Adapted to the needs of our international student community 契合国际学生社区的需求

Adaption of English National Curriculum in KS3 英国国家课程体系

- 12 different subjects – English, Maths, Science and Languages taught in ability sets with the others taught in form groups. EAL support available for students to help them integrate into English sets. 12种不同的科目-分级授课的英语，数学，科学和语言类学科，以及其他以班级形式授课的科目。为学生提供EAL支持，以帮助他们融入英语为授课语言的课程。

International GCSEs in KS4 国际中学教育普通证书



- The world's most popular international qualification for 14 to 16 year olds. Recognised by schools and universities across the world. Developed from English GCSEs to meet the needs of students in International Schools across the world. 全球最受欢迎的14至16岁的国际认证学历证书。被世界各地的学校和大学认可。由英语GCSE开发而成，可满足世界各地国际学校学生的需求。

International Baccalaureate Diploma for KS5



- Academically challenging and balanced programme that prepares 16 to 19 year olds for University and beyond. Recognised by universities across the world. 兼具学术挑战性和学科均衡性的课程体系，可为16岁至19岁的学生为大学及以后的发展做好准备。被世界各地的大学认可。



Juilliard



Massachusetts
Institute of
Technology

Adapted to our context in China 中国本地化

- **An officially registered British School**
正式注册的英国学校
- **Role of Mandarin and Korean** – Native and non-native levels.
普通话和韩语的设置-母语和非母语级别。
 -
- **Context of Beijing** – trips and visits; sports events; examples, case studies and contexts.
植根北京-旅行和探访； 体育赛事； 实例， 实际案例研究。



Communication on Progress 家校沟通

Format形式	Number次数	Timing 时间安排
Written reports 书面报告	3	December 十二月, March 三月, June 六月
Consultation evenings 家长会	2	October 十月 and April 四月
Options Evening 选课指导讲座	1	November 十一月

Other methods of Communication 其它沟通形式	
E-mail 电子邮件	School Newsletter 学校通讯简报
Student Planner 学生日志(家校沟通日志)	Head teacher Newsletter 老师通讯简报
Phone Call 电话	Rewards 奖励
Face-to-face meetings 面谈	Admission Support 招生部支持
Daily E-mail 日常邮件	Parent Association 家委会

The Secondary Curriculum: What is the structure of Secondary 中学课程架构

Key Stage 关键时期	School Years 年级	Key Features 突出特点
KS3	7-9	Students are taught a wide range of subjects by specialist teachers. 专科教师分科教授各科
KS4	10-11	Students undertake two-year IGCSE/GCSE qualifications. Core subjects and Optional Subjects 学生获得两年的IGCSE / GCSE资格证书。核心科目和选修科目
KS5	12-13	Students undertake two-year IB Diploma Programme qualification. Six subjects, plus ToK, EE, CAS. 学生将完成两年的IB文凭课程。六门科目，外加ToK, EE, CAS。

Subjects taught at each Key Stage 各关键时期课程安排

KS3:

- English, Maths, Science, Mandarin or German, Humanities, French or Spanish (Or Korean Y9), Art, Design and Technology, PE, Computer Science, Drama, Music, PSHE, Tutor time
英语，数学，科学，普通话或德语，人文，法语或西班牙语（或韩语从Y9开始），艺术，设计与技术，体育，计算机科学，戏剧，音乐，PSHE，辅导时间

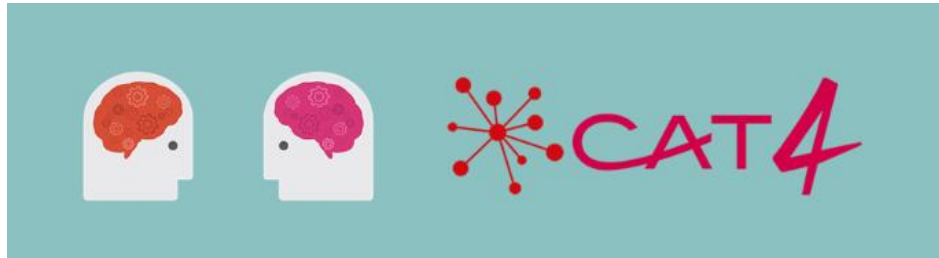
KS4:

- Core: English, Maths, One Science, One MFL (incl. Korean), Core PE, PSHE, Tutor time.
核心课程：英语，数学，一门科学，一门MFL（含韩语），核心体育课，PSHE，辅导时间。
- Options: Students select four from: Art, Biology, Chemistry, Computer Science, Drama, Design and Technology, Economics, French, German, Geography, History, Mandarin, Music, Physical Education, Physics, Psychology, Spanish.
可选科目：学生从以下科目中选择四门：艺术，生物学，化学，计算机科学，戏剧，设计与技术，经济学，法语，德语，地理，历史，普通话，音乐，体育，物理学，心理学，西班牙语。

KS5:

- Six subjects selected, one from each group: Studies in Language and Literature; Language Acquisition; Individuals and Societies; Sciences; Maths; The Arts or an elective from one of the other groups.
选出六门科目，每组各一门：语言文学研究；语言习得；个人和社团；科学；数学；艺术或其他群体之一的选修课。
- Core: Theory of Knowledge, Extended Essay, Creativity, Action and Service, PSHE, Tutor time.
核心：知识论，扩展论文，CAS，PSHE，导师时间。

The Secondary Curriculum: Baseline testing 基线测评



Communicate with stakeholders

Advise parents

Mentor and support students

Personalise learning

Understand students' strengths and weaknesses

Benchmark

Set realistic but challenging targets and identify under achievement

Target Setting 目标设定

Source来源	Assessment测试形式
CAT 4	Online Test 在线测试
MIDYIS, YELLIS and ALIS	Online Test 在线测试
Student Attainment 学生综合素养	Assessment tasks 评估任务
Attitude towards Studies 学习态度	Professional Judgment 老师专业评估

*The Cognitive Abilities Test (**CAT4**) is a diagnostic assessment to show how they learn and what their academic potential might be. Includes Quantitative, Verbal, Non-Verbal and Spatial Reasoning + Solutions.

***MidYIS** stands for Middle Years Information System. Tests are designed to measure ability and aptitude for learning rather than achievement. Results can be used to give an expected level of attainment in National Qualifications.

***Yellis** is an adaptive baseline assessment for students aged 14-16, that helps you understand what your students know and can highlight where they need support as they prepare for their GCSEs.

***Alis** is an adaptive baseline assessment for students aged 16 to 18, that provides information to help identify students' strengths and weaknesses.

MidYIS, Yellis & Alis are target-setting system run by the CEM centre at Durham University.

The Secondary Curriculum: How are students assessed 评估模式

Key Stage 关键时期	Years 年级	Assessment model 评估模式
KS3	7-9	GCSE grades A* - G or 9 - 1
KS4	10-11	GCSE grades A* - G or 9 - 1
KS5	12-13	IB Diploma score from 1 - 7 (highest)

The Secondary Curriculum: GCSE Grades 评分标准

New grading structure	Current grading structure
9	
8	A*
7	A
6	B
5	C
4	
3	D
2	E
1	F
	G
U	U

IGCSE Outcomes 2020 IGCSE 成绩总结

- **57% of our total grades were A*-A (or equivalent 9-7).**
57%得分为A*-A (相当于9-7)
- **Over 75% of our total grades were A*-B.**
超过75%的得分为A*-B
- **59.1% of our students achieved 4 or more iGCSEs at A*-A.**
59.1%的学生取得了4个或以上的A*-A
- **52.3% achieved 5 or more.**
52.3%的学生取得了5个或以上
- **43.2% achieved 6 or more.**
43.2%的学生取得了6个或以上
- **Over 70% of our students achieved 5 or more GCSEs at A*-B.**
超过70%的学生取得了5个或以上的A*-B



Thank You!