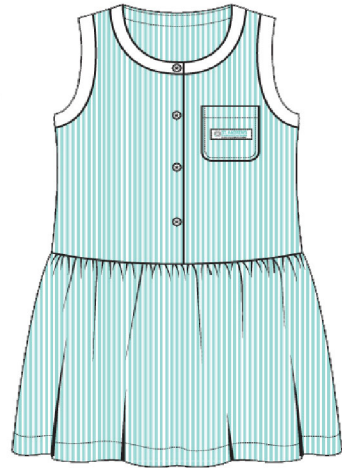




## Monday to Thursday



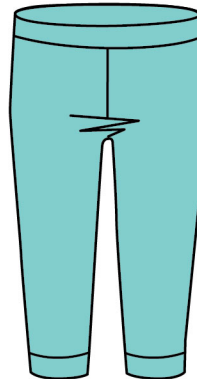
BOY'S TOP & SHORTS



GIRL'S DRESS



PET-SHIRT



LEGGINGS

## Friday



POLO HOUSE SHIRT  
(BLUE YAO)



POLO HOUSE SHIRT  
(RED AKHA)



POLO HOUSE SHIRT  
(YELLOW LAHU)



POLO HOUSE SHIRT  
(GREEN KAREN)

Students are assigned a house colour and the house polo is worn every Friday.

Students should remember that their school uniforms identify them as members of the school community and that these should be worn with pride. When students are out of school premises, travelling to and from the site or on school trips, residential or sporting fixtures, they should remember that they are representatives of our school and should ensure that they conduct themselves in a way that projects St Andrews in a positive light.

### Additions:

Hats - Should be worn when in the sun.

Hoodies/ Jumpers: Should be appropriate designs for school.

Footwear - No open toes/heels footwear to be worn in school.



## PE Kit



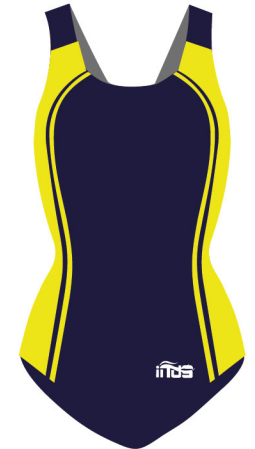
UNISEX PE TOP & SHORTS

Based on their schedule, students are to wear the P.E. uniform from home or change into them according to the time slot in their schedule.

## Swimming Kit (Optional)



BOY'S SWIM TOP & SHORTS



SWIMSUIT GIRLS



Silicone Swim Caps

For Foundation Stage students, the Swimming Kit is not yet required until Key Stage 1, students can wear their own swimming suit.