



THE BRITISH SCHOOL  
OF BEIJING, SANLITUN  
A NORD ANGLIA EDUCATION SCHOOL

# School Uniform Guide

# Early Years Uniform

## SUMMER

Navy polo shirt

Navy shorts

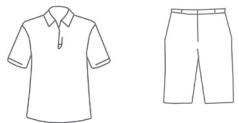


## WINTER

Turquoise polo shirt  
(long-sleeved)

Navy tracksuit top

Navy tracksuit trousers



No PE uniform required for Early Years children



# Primary School - Summer Uniform

## GIRLS

Summer dress (Y1 - Y3)

Skirt or summer dress (Y4 - Y6)

Teal polo shirt (Y4 - Y6)



## BOYS

Grey shorts

Teal polo shirt



# Primary School - Winter Uniform

## GIRLS

Pinafore (Y1 - Y3)

Skirt (Y4 - Y6)

White blouse (Y4 - Y6)

Navy cardigan

Blazer

Grey trousers (Y1 - Y6)



## BOYS

Grey trousers

White shirt

Navy sweater

Blazer

Blue tie



# Primary School - PE Kit (Boys and Girls)

## SUMMER

T-shirt

Shorts



## WINTER

Tracksuit top

Tracksuit trousers

Hoody  
or  
Jacket



# Other items available from the uniform shop

## Compulsory

Homework Bag (Year 1 to Year 6)

Early Years Backpack (Tadpoles to Reception)



## Optional

Swimming bag

Summer hat

Swimming costume

PE hat

Sports socks

Vogmask

Watch



# Footwear

---

**The following items are not available from our uniform shop. Good-quality children's shoes can be difficult to find in Beijing, so we recommend that you bring these with you if you are moving to Beijing from overseas.**

## EARLY YEARS

Trainers/sneakers/sandals (Summer)

Trainers/sneakers (Winter)

## PRIMARY BOYS

Flat black leather shoes (velcro straps, slip-on, shoe laces all fine)

Black socks

## PRIMARY PE (GIRLS AND BOYS)

Non-marking trainers/sneakers

White ankle socks or BSB sports socks

## PRIMARY GIRLS

Flat black leather shoes (velcro straps, slip-on, shoe laces all fine)

White ankle socks (Summer)

Black tights (Winter)

Flat black leather boots can be worn with the Winter uniform



# Notes

School uniform is compulsory attire for all students attending the school. Uniforms can be purchased from the School Uniform Shop located at the Primary Building. Students are expected to arrive at school every day in clean clothes, worn in a tidy manner. Official BSB Sanlitun uniforms can only be purchased from the School Uniform Shop. Other items (such as footwear and socks) can be purchased elsewhere.

At the beginning of the school year, students should attend school wearing Summer uniform. Winter uniform is usually worn from mid-October until the end of March, the school will advise on the exact date depending on weather. These days may change at the discretion of the Principal.

All clothes worn to school (uniform and non-uniform items) should be clearly labelled with the child's name. Lost, un-named clothing and bags are placed in Lost Property. Uncollected items are donated to charity at the end of each school year.

On PE days (two days a week), Year 1 to 6 students should come to school wearing PE kit.

## **Please note:**

- Skirts should be of an appropriate length
- Hair accessories should be kept to a minimum and where possible should be in line with the school colours
- Hair below shoulder length must be tied back
- No jewellery except sleepers or studs in ears
- No make-up, nail varnish, extreme hairstyles or colour