



LÉMAN INTERNATIONAL SCHOOL

CHENGDU

September 8, 2018

# Meet the Teacher Day

**Mr S. Pass, Head of Secondary**

**Mr J. Brown, MYP Coordinator**

**Mrs. Mindorff, IB Coordinator/University Counsellor**





LÉMAN INTERNATIONAL SCHOOL

CHENGDU

# Overview 概览 개요

The curriculum 课程 교육과정

Assessment 评估 평가

The timetable 课程表 시간표

The Advisory Programme 顾问项目 담임프로그램

Managebac 学生学习系统-Managebac 메니지백

Devices 电子设备 전자기기

Questions 提问时间 질문

Managebac handout

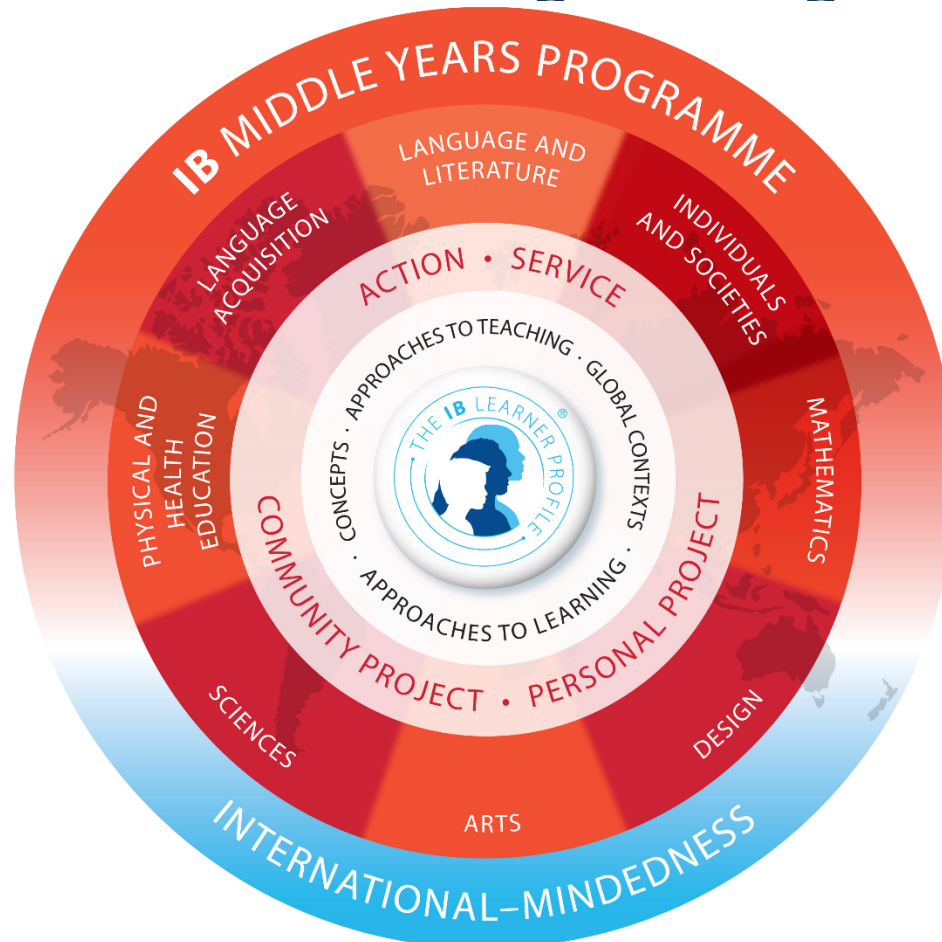




LÉMAN INTERNATIONAL SCHOOL

CHENGDU

# IB Middle Years Programme gr 6-10

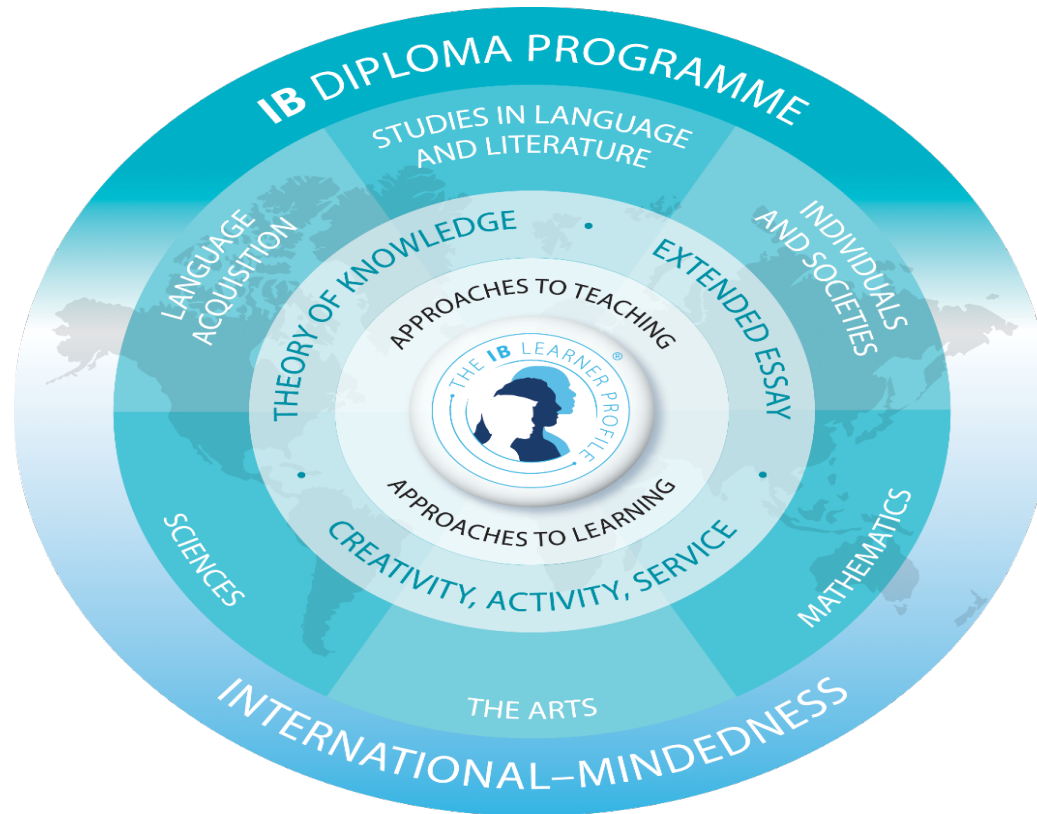




LÉMAN INTERNATIONAL SCHOOL

CHENGDU

# IB Diploma Programme gr 11-12





LÉMAN INTERNATIONAL SCHOOL

CHENGDU

# Learning: Clear Goals and Predictable Assessment

Set criteria (expectations) for each subject

Set descriptions for the overall IB 1-7 semester and final grade

7 Excellent; 6 Very Good;

5 Good

4 Satisfactory

5 “On track” for university

DP and MYP similar: more on MYP below





LÉMAN INTERNATIONAL SCHOOL

CHENGDU

## Descriptions of Final IB Grades IB评分 说明 IB점수체계에 관한 정의

- Common to both MYP and DP (grades 6-12)
  - Used at the end of reporting periods
    - Use Plus or Minus + -
    - Indicates goal for student
    - 4+ > almost a 5 or good level
    - 4- > closer to a 3 where there are gaps
- Descriptions help students and teachers set targets
  - Smaller, subject specific criteria are used in the process leading to the final grades





- 7 Produces high-quality, frequently innovative work. Communicates comprehensive, nuanced understanding of concepts and contexts. Consistently demonstrates sophisticated critical and creative thinking. Frequently transfers knowledge and skills with independence and expertise in a variety of complex classroom and real-world situations.
- 
- 6 Produces high-quality, occasionally innovative work. Communicates extensive understanding of concepts and contexts. Demonstrates critical and creative thinking, frequently with sophistication. Uses knowledge and skills in familiar and unfamiliar classroom and realworld situations, often with independence.
- 
- 5 Produces generally high-quality work. Communicates secure understanding of concepts and contexts. Demonstrates critical and creative thinking, sometimes with sophistication. Uses knowledge and skills in familiar classroom and real-world situations and, with support, some unfamiliar real-world situations.
- 
- 4 Produces good-quality work. Communicates basic understanding of most concepts and contexts with few misunderstandings and minor gaps. Often demonstrates basic critical and creative thinking. Uses knowledge and skills with some flexibility in familiar classroom situations, but requires support in unfamiliar situations.
- 
- 3 Produces work of an acceptable quality. Communicates basic understanding of many concepts and contexts, with occasionally significant misunderstandings or gaps. Begins to demonstrate some basic critical and creative thinking. Is often inflexible in the use of knowledge and skills, requiring support even in familiar classroom situations.
- 
- 2 Produces work of limited quality. Expresses misunderstandings or significant gaps in understanding for many concepts and contexts. Infrequently demonstrates critical or creative thinking. Generally inflexible in the use of knowledge and skills, infrequently applying knowledge and skills.



LÉMAN INTERNATIONAL SCHOOL

CHENGDU

# Schedule

- What does the secondary day look like?
  - 8:30 am in your homeroom.
  - 早上8点半在你的年级班报道
    - Move from class to class.
    - 到各科任老师教师上课
  - **MANAGE OWN MATERIALS.**
- 个人学习材料自己管理意识养成
  - Be on time. 按时







LÉMAN INTERNATIONAL SCHOOL

CHENGDU

# Daily Schedule 每周的课程表安排

| Monday       | Tuesday            | Wednesday     | Thursday      | Friday                    |
|--------------|--------------------|---------------|---------------|---------------------------|
| homeroom     | homeroom           | homeroom      | homeroom      | homeroom                  |
| Humanities   | 9 English          | 17 Humanities | 25 English    | 33 Approaches to Learning |
| Humanities   | 10 English         | 18 Humanities | 26 English    | 34 Art                    |
| break        | break              | break         | break         | break                     |
| STEAM-Design | 11 Science         | 19 Math       | 27 PE         | 35 Science                |
| STEAM-Design | 12 Science         | 20 Math       | 28 PE         | 36 Science                |
| Language B   | 13 Music           | 21 English    | 29 Math       | 37 Humanities             |
| Lunch        | lunch              | Lunch         | Lunch         | Lunch                     |
| ICT          | 14 Art             | 22 Music      | 30 Science    | 38 PE                     |
| Math         | 15 Enrichment elec | 23 Language B | 31 Language B | 39 enrichment music       |
| Math         | 16 Enrichment elec | 24 Language B | 32 Language B | 40 enrichment music       |



LÉMAN INTERNATIONAL SCHOOL

CHENGDU

# Homeroom Advisory

## 年级班主任 每周1到周4

Homeroom: first 15 minutes of the day

每天早上到校后先到自己的年级班主任教室报道

Attendance with advisor 班主任打考勤

Organization and focus of tasks 安排组织自己的课业任务

Positive start to the day! 开始积极的一天

Announcements 注意事项

Homeroom advisor who is a specialist on your child

班主任也是您孩子在学校主要导师

Gr 6-10 Friday period 1 Advisory programme





LÉMAN INTERNATIONAL SCHOOL

CHENGDU

# Approaches to Learning: Friday's First Period in gr 6-10

咨询辅导 周5早上第一节课 매주금요일ATL수업

Coordinated Pastoral Care Programme 精神关怀协调科目

Introduction to the Year 学年入门介绍

Personal Relationships 人际关系

Healthy Lifestyle 健康生活方式

Goal Setting / PLPs 学习目标设定

Careers and University Readiness 升学以及高校学业准备





LÉMAN INTERNATIONAL SCHOOL

CHENGDU

## Managebac and Homework 以及家庭作业 메니지백상의 숙제

- Focus on communication between teacher and student  
Managebac 学生系统着重于老师以及学生的沟通
- Significant instructional tool used and oriented to students and class work  
Managebac 学生系统是一个高效的教学管理软件，多适应于学生以及班级  
课业中
- Assessment calendar: summative assessment tasks are posted on your calendar  
评估日历，总结性的评估会公布在您的日历表上  
Parents receive a log in notice  
Notifications of messages posted sent to parents  
Progress Reports and Reports Cards posted in Managebac  
Ask your child to show you his/her weekly work and calendar





Go to message | 0 comments



Michele Mindorff Mon, 24 Apr at 8:36 AM

## Humanities 10 Class Work Week of April 24, 2017

Week of April 24, 2017

this day in history <http://www.history.com/this-day-in-history/easter-rebellion-begins>

Monday

Review of work coming up

Draft: Wednesday April 19 –feedback given

Final: Tuesday April 25

Questions?

### SECTION 4: GLOBAL ISSUES TODAY

1. Do the vocabulary on the first page and then read the section
2. Complete the questions under section 4 assessment: Terms and Names, Use your reading notes, Key Ideas, Critical Thinking
3. DUE WEDNESDAY APRIL 26 AND WE WILL GO OVER THIS

Tuesday

Support for research paper

Check turnitin.com

Check formatting of paper

### HOMEWORK

#### SECTION 1: THE COLD WAR

1. Do the vocabulary on the first page and then read the section
2. Complete the questions under section 1 assessment: Terms and Names, Use your reading notes, Key Ideas, Critical Thinking
3. DUE WEDNESDAY MAY 3 AND WE WILL GO OVER THIS Section
4. Source quiz on Thursday May 4th based on the Cold War reading



# Class of 2020 (Grade 10)

- Blog
- Dashboard
- Profile
- IB Manager
- Classes
- Groups

- Overview
- SA
- Projects
- Messages
- Calendar
- Files
- Members

## Calendar



September 2017

Month Week

| Sun | Mon   | Tue                           | Wed                 | Thu  | Fri   | Sat |
|-----|---|-------------------------------|---------------------|--|---|-----|
| 27  | 28<br>9AM Yalta/Potsdam Conference graphic organizers   | 29<br>9AM Focus Task page 320 | 30<br>7:05PM gfhfhg | 31<br>10:25AM Personal Project SMART goals sheet | 1<br>9AM Yalta/Potsdam comparison                   | 2   |
| 3   | 4<br>9AM Compare/Contrast Yalta and Potsdam conferences | 5                             | 6                   | 7  | 8   | 9   |
| 10  | 11  | 12                            | 13                  | 14   | 15<br>1PM film "Sonnenallee", discussion with actor | 16  |
| 17  | 18  | 19                            | 20                  | 21   | 22  | 23  |

EDUCATION



LÉMAN INTERNATIONAL SCHOOL

CHENGDU

## Devices 电子设备 전자기기

The classroom is a No Phone and No Earphone Zone 教室内不能使用手机

Interaction over one-face-one-screen

上课时需要学生专注于课堂而不是其他的电子产品

The computer is a tool not the goal 电脑只是学习工具

Necessary for accessing ManageBac 用于随时进入ManageBac学习使用

Grade 6-12: internet enabled device expected at school

6-12年级需要学生配备电脑联网学校



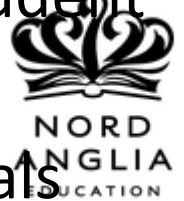


LÉMAN INTERNATIONAL SCHOOL

CHENGDU

## Parent Message PLP (Personalized Learning Plans)

- - 我们想要听到您对孩子的学习期望
- - in setting goals for his/her own learning
  - Taught in gr 6-7 to use a homework agenda
- Predictable learning: Gr 6-12 have Managebac as a student learning system
  - On each report students' comments about their goals







LÉMAN INTERNATIONAL SCHOOL

CHENGDU

# Support: let us know what you need!

ManageBac Parent handout sent via email

Tell Miss Yiyi will take your name if you need additional help;

IB MYP assessment session: September 12 2pm

IB Diploma/university information session this fall:

September 26 2pm

Look for curriculum outlines posted on ManageBac

In partnership with the LFA: Parent Academy #1 TBA !





LÉMAN INTERNATIONAL SCHOOL

CHENGDU

# Internationally Minded: Explore China 学 生中国探索游

Mr McCabe: Athletic Director

Gr 6 Ganbao Village-natural history

Gr 7 Four Sisters-cartography, religion, nutrition

Gr 8 Hei shui-Silk Road, transportation, human  
geography

Gr 9 Lebrang Gansau-film, farming, development

Gr 10 Shangri La- disparities in development

Gr 11 Kangding Tagong- CAS project small business and  
orphanage support

