



*Welcome
to Regents*

You want the best for
your child. So do we.



**REGENTS INTERNATIONAL SCHOOL
PATTAYA**
A NORD ANGLIA EDUCATION SCHOOL

Be Ambitious Be Regents



Welcome to our school



Welcome to Regents International School Pattaya, an exciting, vibrant school that has something to offer every child and every family.

With our established reputation for academic excellence built over more than 25 years, we have developed an excellent reputation for providing exciting learning experiences for all of our students, in an inclusive and caring community. As part of the Nord Anglia Education family we transform learning beyond the traditional through our collaborations with the Juilliard School of Performing Arts in New York and the Massachusetts Institute of Technology (MIT). We are also very proud to be a Round Square school which supports our belief in providing an all round holistic education for our children.

We are an inclusive school that continues to celebrate consistently high academic results, above the world average, with the prestigious International Baccalaureate Diploma and IGCSEs. Our students go on to attend some of the best universities around the world but, perhaps more importantly, we help them to achieve their first choice university with whatever subject they choose to go on to study.

We believe our children succeed when they are cared for, challenged and have opportunities to apply their learning. We offer engaging learning environments with the most talented teachers who believe there are no limits to what your child can achieve.

Choosing the right community and learning environment for your child is an important decision. We hope you agree that Regents is not only a fabulous school but also the right school for you and we look forward to welcoming you into our family.

Be Ambitious Be Regents

Sarah Osborne-James
School Principal

Follow us on



You want the best
for your child.
So do we.

Nord Anglia Education

Be Ambitious

All Nord Anglia Education schools are driven by one unifying philosophy – we are ambitious for our students, our people and our family of schools. Our schools deliver a high quality education through a personalised approach enhanced with unique global opportunities to enable every student to succeed.

Learn from the best

We know the difference that great teaching makes to your child's success at school. That's why Nord Anglia has developed a unique approach to teacher recruitment, training and support that ensures your child learns from the best. Nord Anglia also partners with world-leading organisations to ensure that the curricula and initiatives we offer are second to none. Our performing arts curriculum is developed in collaboration with The Juilliard School, the world leader in performing arts education based in New York. Our STEAM curriculum is also developed in collaboration with MIT and our students have even further opportunities through our collaboration with UNICEF.

Global Community

We enrich your child's learning experience with opportunities beyond the ordinary. From online debates and challenges, to expeditions to the savannah of Tanzania or performing in our Global Orchestra in New York, Nord Anglia's Global Campus connects our students around the world to learn together every day.

Success for every student

Our families' academic results are testament to this approach, with one in three Nord Anglia Education students going to the world's top 100 universities. And for Nord Anglia schools, academic success is just the beginning. We will nurture your child's talents so that they can succeed in every aspect of their education, from sports to arts, languages or technology. We encourage every student to love learning, to try something new and, above all, to be ambitious.



73 Premium schools in 30 countries.



More than 67,000 students.



More than 14,000 teachers and support staff globally.

Learning Opportunities Beyond the Ordinary

Through our collaborations we think beyond traditional education to transform learning.

Juilliard School of the Performing Arts

The Performing Arts are creative keys that can unlock our students' imagination and significantly transform their education. They contribute to the development of the skills our students will need in the future both in terms of employment and their personal success and happiness. Research clearly links the study of the Performing Arts to improvements in creativity and innovation, self-confidence and presentation skills, self expression, empathy and compassion, cultural awareness and appreciation, physical and personal development and higher academic achievement.

Juilliard

Massachusetts Institute of Technology (MIT)

To succeed in the future our children must learn how to think, not what to think. Our collaboration with MIT is designed to prepare students for our rapidly evolving world, equipping them with the skills and techniques to thrive. Through hands-on, interdisciplinary learning of STEAM subjects (science, technology, engineering, art and maths), your child will develop the transferable skills needed to invent the future they will ultimately inherit.



Round Square - A world of adventure

A Round Square school must demonstrate how the six IDEALS (internationalism, democracy, environmental awareness, adventure, leadership and service to the community) are offered to its students through different areas of educational practice. As the only Round Square and Nord Anglia School in the area, we are privileged to have an extensive outdoor education programme with both national and international expeditions for our children. We are extremely proud of the life changing opportunities these provide. They challenge your child to take learning outside of the classroom, open their eyes to world issues and give them the hands on opportunities to make a difference and positive contribution to our world.



Exchange Programmes

Thanks to our membership of the Round Square organisation, we are very lucky to have the opportunity to offer exchanges to a range of schools around the world. The students involved get the chance to spend an extended time studying at other schools, sharing cultural experiences and living with a host family. On their return, they are then encouraged to host a student from the school they visited, and welcome them into our Regents community. The learning opportunities from this are immeasurable, with students gaining cultural, international and emotional experiences that are invaluable as well as a broader outlook on the world around them.

Our Gap Staff Programme

Another unique benefit to our Students is the Gap programme that we run here at Regents. We employ young people, mainly from other Round Square schools, who are in between school and university to come and be part of our community and undertake long term placements with us where they can experience what it is like to work in an International School. The Gap staff get involved with all aspects of life at Regents and act as role models for our students, as well as valued members of staff in all aspects of school life. As alumni of a Round Square school, Regents students can also participate in the gap programme; this gives them access to 170 schools worldwide where they can gain real world experience in the work place, independence before heading to university and explore a new part of the world, remaining part of the Round Square family even after their time at Regents has come to a close.

Global Campus

All Nord Anglia students are a part of more than just their own school; they are involved in a virtual learning environment called Global Campus where they can learn from invited experts, take part in various challenges and competitions, or collaborate with peers before and after regional festivals, sports events or global expeditions.



Academic success
and memories to
last a lifetime.

Boarding at Regents

Boarding at Regents provides a supportive environment with caring staff, fantastic facilities, friends to be made and times to enjoy. The outstanding range of learning opportunities and new environments to discover in Thailand and in South East Asia make the boarding experience here so much richer and better value-for-money when compared with boarding schools in the UK, Western Europe and North America. Our boarders are encouraged to work hard and to play hard – whilst they will be encouraged towards independence they will also know that they have our staff's full support as they grow.

Boarding is available for students from Year 3 (8 years old) and the options are very flexible with occasional boarding, part-time boarding and full-time boarding. If you would like to try boarding as an option for your child we also have taster sessions available. There is an extensive range of activities arranged for our boarders, at weekends and evenings, giving them the opportunity for new experiences and building life-long friendships. Academic support is also provided each day with supervised study sessions part of the daily routine; one of the biggest advantages of boarding for your child.



Inclusion



Our goal is to provide students with a personalised support programme which meets the learning, language and social-emotional needs in the most inclusive, least restrictive environment possible.

English as an Additional Language (EAL)

EAL at Regents aims to provide inclusive access to year level learning experiences alongside accelerated language learning opportunities.

Our programme supports students by providing individualised schedules, responsive support, and targeted language instruction so that each student experiences both inclusion and academic success.

Learning Support

Learning support services are an integral part of the Inclusion department at Regents. The Inclusion team works collaboratively with classroom teachers to ensure that students receive the support they need to access the curriculum and be successful in their learning. Our aim is to challenge and support students in the most inclusive setting possible.

Speech and Language Therapy (SALT)

At Regents, we are proud to have an onsite Speech and Language Therapist. SALT services are for students who have difficulty with certain aspects of communication. Areas of support include expressive language, receptive language skills, social interaction, and social communication skills. Our Speech and Language Therapist helps students to communicate in clearer and less challenging ways.

Counselling

Social emotional well-being is a top priority for us at Regents. We employ a full-time school counsellor who provides counselling and other advice services to help students talk about issues in a safe place.

At Regents, our qualified counsellor can explore and provide support for students' social and emotional needs, as well as provide behavioural therapy across a wide variety of challenging settings.

There is more
in you than
you think.

Modern Foreign Languages

Here at Regents we really value Internationalism and Diversity. As such we offer all our students the opportunity to learn another language in addition to English.

Thai Studies

All our students from Nursery to Year 9 study Thai Language and Culture. We have two courses in Thai: Thai for Thai students, which is a first language programme and compulsory for all our students of Thai nationality. It is also an option for half Thai or non-Thai students providing they have the appropriate level of spoken Thai to engage with the course. For our non-native Thai speakers we have a Thai for All programme, which is a Thai beginner's class that focuses on spoken communication and cultural understanding, as well as introducing the Thai alphabet and phonics. In Years 10 and 11 we offer Thai IGCSE first language as one of the IGCSE options. At IB Diploma level, Thai is currently available for study as a first language (Language A).

Modern Foreign Languages

We also offer a choice of classes in Spanish, French and Mandarin Chinese to all our non-Thai students. Our Modern Foreign Languages (MFL) programme begins in Year 3 where students study each language for one term to get a 'taster' for each language. At the end of Year 3, families are asked to choose their preferred language and, from Year 4 onwards, students continue to study their language of choice. Students are encouraged to keep studying their chosen language right through to IGCSE level and then subsequently into their IB Diploma programme as Language B. At Diploma level, we offer Ab Initio (A course for beginners) courses in French, Spanish or Mandarin, depending on the demand from students.

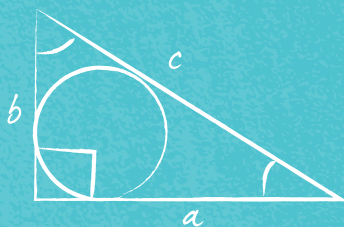


Home Languages

Home languages (mother tongue) are very important and we recognise the role that promoting the use of home languages can have on the overall cognitive development of children. We currently offer optional Korean first languages classes to all of our Korean first language students from Years 6-13. Russian first language is available as an IGCSE option and as Language A at Diploma level. This year we are happy to announce that we have also opened classes in Mandarin Chinese first language in Year 9, 10 and 11. With such a varied and international school community, with over 50 different nationalities represented, unfortunately we cannot offer teaching in every home language, but we endeavour to support home language learning wherever possible. For example, we currently have a native Chinese teacher offering a Mandarin 1st language CCA for Year 3-6 students and for Year 11-13.

At Diploma level we have a great deal of flexibility for our bilingual students to study their own native language and have that recognised as part of their Diploma. There is a wide range of options including students following a self-taught language programme, which is supported by a teacher-mentor or studying for the Bilingual Diploma. More information about these options is available from our IBDP Co-ordinator, Sara Morrow.





International Primary Curriculum



The International Primary Curriculum (IPC) is one of the fastest-growing curriculum choices in the world today, used in schools in over 90 different countries. It is a comprehensive curriculum for 5 - 11 year olds, made up of over 130 exciting, engaging and globally relevant thematic units of work, which are designed around a clear process of learning and with specific learning goals for subject, personal and international learning.

With its own Assessment for Learning Programme, the IPC provides immediate support for teachers and learners through its comprehensive design and rigour, whilst being flexible enough for each school to adapt the planning and build on their own strengths.

Each IPC unit is designed around one core purpose: improving children's learning. World class writers have created a range of cross-curricular units based on globally relevant themes that excite children and teachers alike. They are designed to nurture children's personal qualities and develop international mindedness.

The IPC actively encourages parent involvement and parents will be invited into their child's classroom or relevant learning space to join in with the entry and exit points.

Advanced Learners

At Regents, we pride ourselves on being an inclusive school however, as our outstanding IGCSE and IB Diploma results show, many of our students achieve more than they thought possible. We focus on the attributes and mind-set that will enable a student to become an advanced learner:

- they are encouraged to be self-starters and highly motivated both inside and outside of the classroom
- they ask searching and challenging questions
- they use feedback to reflect on what they have learnt and the skills that they are developing
- they actively seek out opportunities to develop their thinking and understanding further

We provide many opportunities for advanced learners to push themselves further through our MIT and Juilliard collaborations, the Federation of British International Schools in Asia (FOBISIA) challenges, student leadership and NAE's Global Campus where students can compete with students from around the world in creative writing, visual arts, debating, Model United Nations and many other disciplines.

Academic Success



Our educational approach enables every student to reach high levels of academic and social success. We offer rigorous and compelling curricula which are respected by the world's top universities, and encourage critical thinking, teamwork and leadership.

Our students not only succeed while they are at school, but the courses they study lay the foundations for future success at the next level too. Taking IGCSE examinations followed by the IB Diploma Programme is a highly regarded route to universities and colleges around the world. The IB Diploma Programme is recognised as the most prestigious worldwide pre-university award.

Age 14 - 16: IGCSE

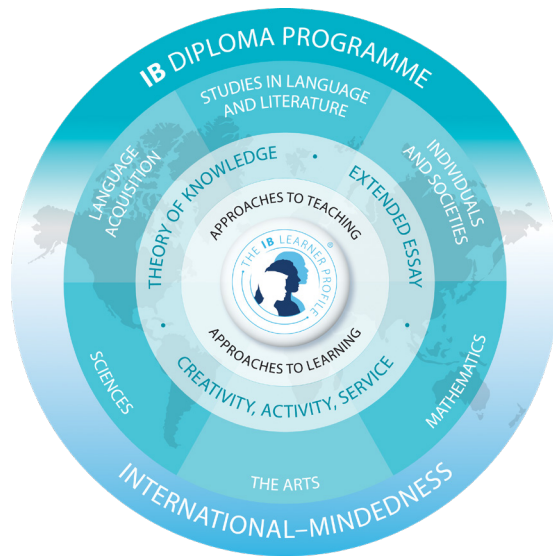
In Year 10 and 11, our students study to achieve the International General Certificate of Secondary Education (IGCSE) qualification, developed by Edexcel and Cambridge Assessment International Education.

Age 16+ : IBDP

Regents International School Pattaya has offered the International Baccalaureate Diploma Programme (IBDP) for 18 years, consistently delivering results well above the world average.



Sixth Form: International Baccalaureate Diploma Programme and Regents Diploma Courses



A key decision for students heading into Sixth Form is which route to take in order to have access to a wide range of opportunities at university and beyond. The International Baccalaureate Diploma Programme is one of the most exciting and rigorous academic programmes for students in Year 12 and 13, found in leading schools across the world.

In contrast with some other programmes (e.g. A levels), DP students take six subjects, three at higher level, and three at a standard level: these must include maths, at least one science, one humanities subject, English language and literature (or the student's own native language) and a foreign language.

What sets the DP apart from other qualifications, however, is how it provides students with so many of the additional skills top universities are looking for such as critical and creative thinking, problem solving, and self management. The Theory of Knowledge course looks at how we know what we know, asking students to be critical consumers of knowledge. For the extended essay students write a research-based 4,000-word essay in a subject of their interest. Students also carry out a series of activities relating to Creativity, Action and Service (CAS), which helps them to develop stronger interpersonal skills, broaden their experience and become truly global citizens. This could include learning a musical instrument, trekking through Nepal or teaching at community partner schools. This means that, in addition to deep subject knowledge, IBDP students have far more experiences and skills on which they can draw on for university or careers in the future than their counterparts from other programmes.

The DP is recognised and respected by the world's leading universities, and evidence suggests DP students have a significantly greater likelihood of earning a first class honours degree and improved job prospects.

Regents International School Pattaya has offered the International Baccalaureate Diploma Programme (IBDP) for the past 18 years with our students consistently achieving results well above the world average. This academic success provides the best opportunities for our students and their future studies at some of the best universities in the world.

Regents Diploma Courses

Alongside the IBDP, our Regents Diploma courses are available in Years 12 and 13 in certain subject areas like Humanities, Sciences, Maths and Arts. They are accessible to students with a variety of skills and backgrounds, including those who are still developing their academic English skills or who receive learning support. These courses are one year each in duration and are aligned with international standards for each subject area. These courses are internally assessed by our teachers and allow the students to earn credit toward their Regents Diploma, awarded at the end of Year 13.



IGCSE Results (2021)

42%
A*/A

90%
A*-C

28.5% UK
A*/A Average

IBDP Results (2021)

44 HIGHEST
POINTS

36.2 AVERAGE
POINTS

33 GLOBAL
AVERAGE

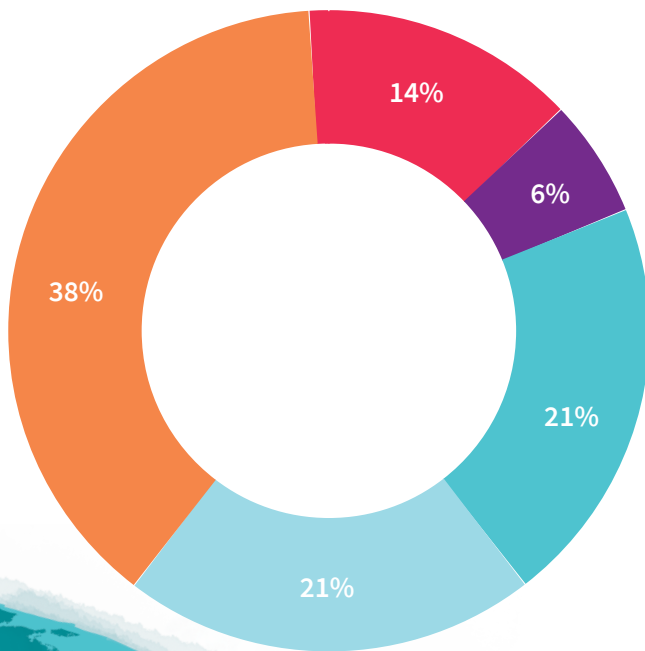


No limits
to what your child
can achieve.



University Destinations

Our students are well prepared to move on to study a variety of academic disciplines at prestigious universities across the world. See below our University destinations from 2015-2021 in percentages.



■ UK ■ Asia ■ Europe
■ North America ■ Australasia

United Kingdom

- University of the Arts London
- University of Bangor
- Bournemouth University
- University of Brighton
- University of Chester
- University College London (UCL)
- University of Durham
- University of Edinburgh
- University of Exeter
- University of Glasgow
- University of Hertfordshire
- Kings College London
- University of Leeds
- Leeds Art College
- Leeds Beckett University
- Manchester Metropolitan University
- University of Manchester
- Newcastle University
- University of Nottingham
- Nottingham Trent University
- Oxford Brookes University
- Queen Mary University of London
- University of Reading
- Rose Bruford College of theatre and Performance
- Royal Holloway University
- University of Sheffield
- University of Sussex
- Swansea University
- University of Warwick
- University of Westminster
- University of the West of England
- University of Winchester
- University of Bristol
- University of Stirling
- University of St Andrews

Europe

- Zealand Institute of Business and Technology
- American University of Paris
- Bonn/Köln University
- International School of Management
- Fontys University of Applied Sciences
- RWTH Aachen University
- Eindhoven University of Technology
- Erasmus University Rotterdam
- EU Business School
- Leiden University
- University of Maastricht
- Tilburg University
- Vrije Universiteit Amsterdam
- Cardinal Herrera University
- Business and Hotel Management School
- Les Roches International Hotel Management School
- Delft University of Technology
- University of Groningen
- Moscow State Institute of International Relations
- University of Debrecen
- University of London Institute in Paris
- University of Amsterdam
- Ludwig Maximilian University of Munich
- HU University Utrecht

North America

- Academy of Art University
- Douglas College
- University of California
- University of Colorado Boulder
- Hult International Business School
- Los Angeles Film School
- Michigan State University
- Otis College of Art and Design
- Purdue University
- Ryerson University
- San Francisco State University
- South Alberta Institute of Technology
- University of Toronto
- Ventura Community College
- University of Western Ontario
- McGill University
- California State University Northridge
- MacEwan University

Asia

- Beijing Language and Culture University
- Hong Kong University
- University of Gadjah Mada
- Sri Venkateswara College of Engineering
- Taylor's University
- Ateneo de Manila University
- Dongguk University
- Korea Advanced Institute of Science and Technology
- Korea University
- Yonsei University
- Chulalongkorn University
- Mahidol University
- Nagoya University of Commerce & Business
- SAE Institute Bangkok
- Silpakorn University International College
- Thammasat University
- Tsinghua University
- Amity University Maharashtra
- Stamford International University
- Hong Kong University of Science and Technology
- The Chinese University of Hong Kong
- Jindal Global University
- Sophia University
- James Cook University

Australasia

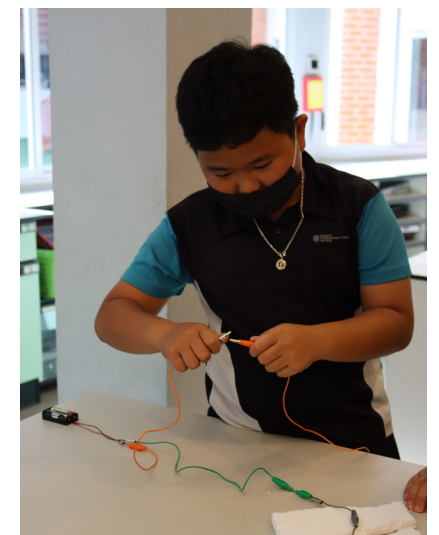
- Curtin University
- Edith Cowan University
- Melbourne University
- Monash University
- University of Queensland
- Griffith University Australia
- SAE Auckland
- University of Auckland

Some examples of our students' university destinations

- Smith Business School of Queen's University
- Santa Monica College
- Reed College
- The Savannah College of Art and Design

Co-Curricular Activities (CCA)

At Regents International School Pattaya we understand the importance of learning and having fun outside of the classroom. With this in mind we have developed a comprehensive and diverse CCA programme to support your child's continued development, both academically and as a global citizen.



Applying to Regents

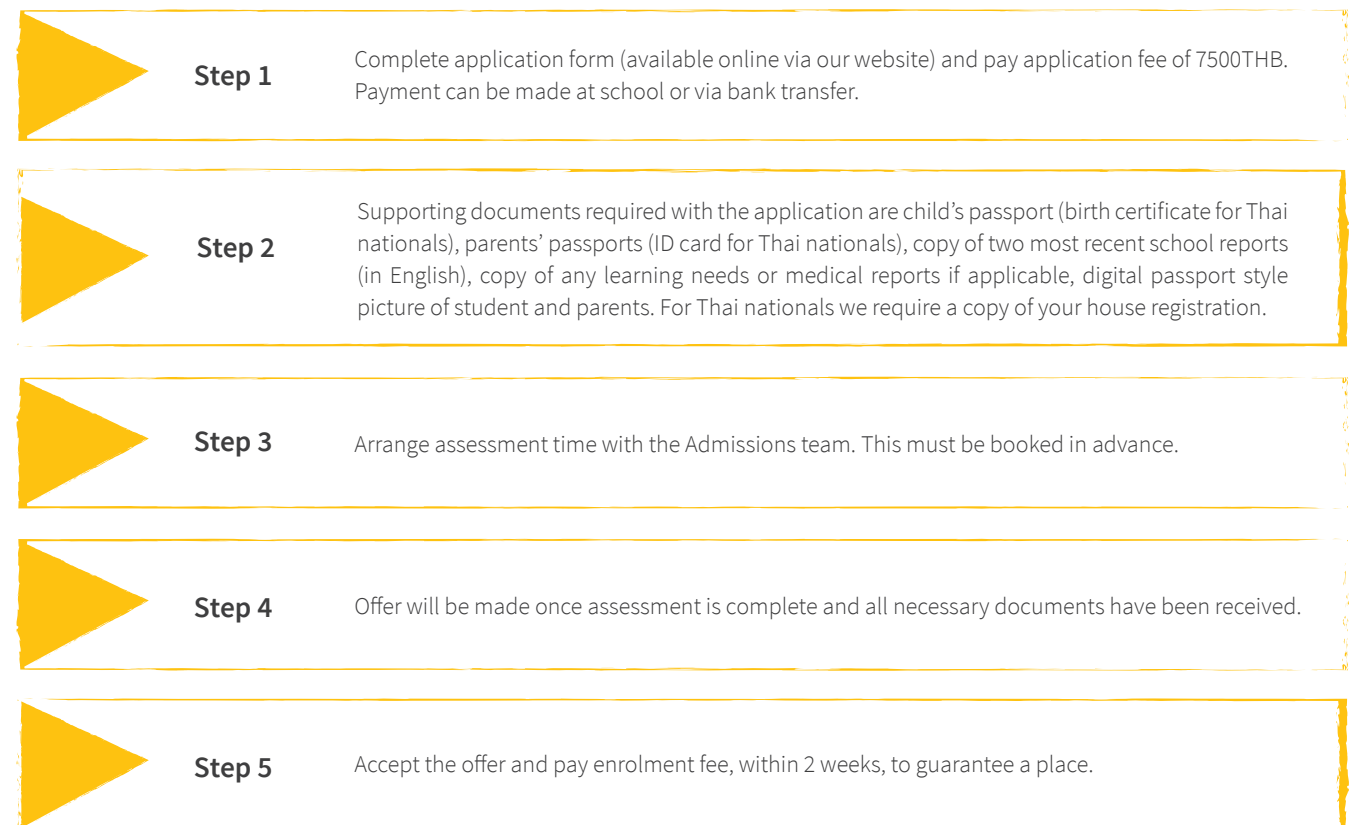
We encourage you to visit the school and you are welcome at any time. If you can, please book a time with us in advance so we can make sure that you can meet key members of staff on the day. Just contact our Admissions team and they will set everything up for you. admissions@regents-pattaya.co.th

Assessments

We are a non-academically selective school but we do carry out an initial assessment to ensure suitable placement and English as an Additional Language (EAL) support.

- Early Primary: up to 60 minute “taster” session in the classroom
- Primary: verbal and written appraisal and assessment of English language ability to allow us to determine the level of English as an Additional Language (EAL) support required
- Secondary: cognitive ability test, assessment on English language ability and interview with Head of Secondary
- Year 12 applications: in addition to our Secondary school assessments, students applying to join our International Baccalaureate Diploma Programme must have a minimum of five IGCSE at grades A* to C, or equivalent.

How to apply for a place at our school



Year Group Placement (2021/2022)

Children are placed in the year group according to their date of birth.

	Date of Birth	Age in 2021-22	Regents Class Placement (UK)	USA / Canada	Thailand
Early Primary	31.08.18 - 30.08.19	2 - 3	Pre-Nursery	Pre-Kinder	Tream-Anubaan
	31.08.17 - 30.08.18	3 - 4	Nursery	Pre-Kinder	Anubaan 1
	31.08.16 - 30.08.17	4 - 5	Reception	Pre-Kinder	Anubaan 2
Key Stage One	31.08.15 - 30.08.16	5 - 6	Year 1	Kindergarten	Anubaan 3
	31.08.14 - 30.08.15	6 - 7	Year 2	Grade 1	Pratom 1
Primary School/ Key Stage Two	31.08.13 - 30.08.14	7 - 8	Year 3	Grade 2	Pratom 2
	31.08.12 - 30.08.13	8 - 9	Year 4	Grade 3	Pratom 3
	31.08.11 - 30.08.12	9 - 10	Year 5	Grade 4	Pratom 4
	31.08.10 - 30.08.11	10 - 11	Year 6	Grade 5	Pratom 5
Secondary School/ Key Stage Three	31.08.09 - 30.08.10	11 - 12	Year 7	Grade 6	Pratom 6
	31.08.08 - 30.08.09	12 - 13	Year 8	Grade 7	Matayom 1
	31.08.07 - 30.08.08	13 - 14	Year 9	Grade 8	Matayom 2
Secondary School/ IGCSE	31.08.06 - 30.08.07	14 - 15	Year 10	Grade 9	Matayom 3
	31.08.05 - 30.08.06	15 - 16	Year 11	Grade 10	Matayom 4
Sixth Form / IBDP	31.08.04 - 30.08.05	16 - 17	Year 12	Grade 11	Matayom 5
	31.08.03 - 30.08.04	17 - 18	Year 13	Grade 12	Matayom 6

Our Students

Class Sizes

Pre-Nursery: 16 children



Nursery and Reception: 18 children



Year 1 - Year 2: 22 students



Year 3 - Year 6: 24 students



Year 7 - Year 11: 24 students



Year 12 - Year 13: 16 students



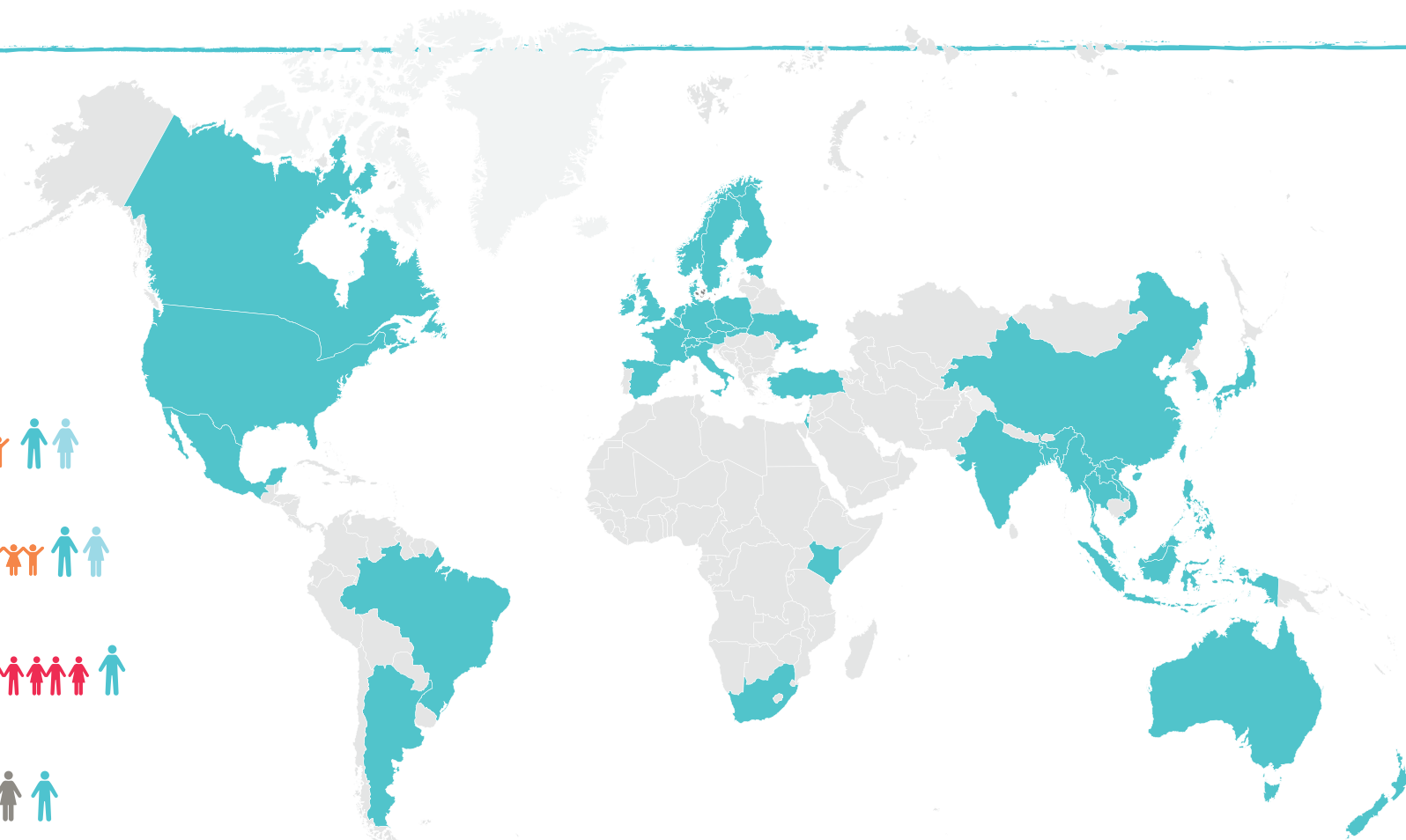
Our Students

Regents International School Pattaya is an international school in the truest sense, with more than 50 different nationalities represented in the student body. Our diversity results in part from our location on the Eastern Seaboard of Thailand, which attracts so many expat families alongside the local Thai community. Part of what sets us apart from most other schools is that we are also a boarding school, so we welcome students from countries not otherwise well-represented around Pattaya.

Our Teachers

We are committed to ensuring that our students are taught by exceptional teachers and, as a Nord Anglia Education school, we are able to recruit the very best teachers from around the world. Our highly qualified teachers, all with relevant teaching degrees, are almost all native English speakers, with the exceptions being our Mandarin, Korean, Thai, French and Spanish language teachers who are native in their home languages. Appropriate class sizes ensure that our teachers spend quality time with your child, and provide

them with truly personalised learning to deliver on our belief that there are no limits to what your child can achieve. In addition, many of our classes are further supported by our well-trained Teaching Assistants, who work alongside the teachers to motivate, encourage and assist in the classroom, providing that extra level of attention to your children, and enriching the classroom environment even further.



Calendar 2021/22

Term Break
 New Staff Induction
 Inset
 Thai Holiday (School closed)
 Summer School
 Boarding Houses open / close

August 2021

M	T	W	T	F	S	S
						1
2	3	4	5	6	7	8
9	10	11	12	13	14	15
16	17	18	19	20	21	22
23	24	25	26	27	28	29
30	31					

September 2021

M	T	W	T	F	S	S
		1	2	3	4	5
6	7	8	9	10	11	12
13	14	15	16	17	18	19
20	21	22	23	24	25	26
27	28	29	30			

October 2021

M	T	W	T	F	S	S
				1	2	3
4	5	6	7	8	9	10
11	12	13	14	15	16	17
18	19	20	21	22	23	24
25	26	27	28	29	30	31

November 2021

M	T	W	T	F	S	S
1	2	3	4	5	6	7
8	9	10	11	12	13	14
15	16	17	18	19	20	21
22	23	24	25	26	27	28
29	30					

December 2021

M	T	W	T	F	S	S
		1	2	3	4	5
6	7	8	9	10	11	12
13	14	15	16	17	18	19
20	21	22	23	24	25	26
27	28	29	30	31		

January 2022

M	T	W	T	F	S	S
					1	2
3	4	5	6	7	8	9
10	11	12	13	14	15	16
17	18	19	20	21	22	23
24	25	26	27	28	29	30
31						

February 2022

M	T	W	T	F	S	S
	1	2	3	4	5	6
7	8	9	10	11	12	13
14	15	16	17	18	19	20
21	22	23	24	25	26	27
28						

March 2022

M	T	W	T	F	S	S
	1	2	3	4	5	6
7	8	9	10	11	12	13
14	15	16	17	18	19	20
21	22	23	24	25	26	27
28	29	30	31			

April 2022

M	T	W	T	F	S	S
				1	2	3
4	5	6	7	8	9	10
11	12	13	14	15	16	17
18	19	20	21	22	23	24
25	26	27	28	29	30	

May 2022

M	T	W	T	F	S	S
						1
2	3	4	5	6	7	8
9	10	11	12	13	14	15
16	17	18	19	20	21	22
23	24	25	26	27	28	29
30	31					

June 2022

M	T	W	T	F	S	S
		1	2	3	4	5
6	7	8	9	10	11	12
13	14	15	16	17	18	19
20	21	22	23	24	25	26
27	28	29	30			

July 2022

M	T	W	T	F	S	S
				1	2	3
4	5	6	7	8	9	10
11	12	13	14	15	16	17
18	19	20	21	22	23	24
25	26	27	28	29	30	31



Our School Day

Pre-Nursery - Year 1	Year 2 - 6	Secondary
Start 8:20am / Finish 3:10pm	Start 8:20am / Finish 3:20pm After-School Activities Mondays and Thursdays 3:30 pm - 4:30 pm	Start 8:20am / Finish 3:20pm After-School Activities Mondays and Thursdays 3:30 pm - 4:30 pm

Early Primary Example Timetable

	Monday	Tuesday	Wednesday	Thursday	Friday
	08:20 - 08:40	Registration, communication and language	Registration, communication and language	Registration, communication and language	Registration, communication and language
P1	08:40 - 09:20	Phonics	Phonics	Phonics	Phonics
P2	09:20 - 09:50	Play based learning	Play based learning	Play based learning	Play based learning
	09:50 - 10:00	Snack	Snack	Snack	Snack
	10:00 - 10:20	Break	Break	Break	Break
P3	10:20 - 11:00	Literacy	Literacy	Literacy	Maths
P4	11:00 - 11:40	Thai	Play based learning	Swimming	Play based learning
P5	11:40 - 12:20	Performing Arts	Physical Education	Play based learning	Play based learning
	12:20 - 13:20	Lunch	Lunch	Lunch	Lunch
P6	13:20 - 14:00	Maths	Maths	Understanding the World	Assembly
P7	14:00 - 14:40	Play based learning	Play based learning	Play based learning	Play based learning
P8	14:40 - 15:10	Class routines, reading directed time	Class routines, reading directed time	Class routines, reading directed time	Class routines, reading directed time

Primary Example Timetable

		Monday	Tuesday	Wednesday	Thursday	Friday
	08:20 - 08:40	Registration	Registration	Registration	Registration	Registration
P1a	08:40 - 09:00	English skills	Performing Arts	English skills	English skills	English skills
P1b	09:00 - 09:20	English	Performing Arts	English	Maths	English
P2a/b	09:20 - 10:00	English	Maths	English	Maths	English
	10:00 - 10:20	Break	Break	Break	Break	Break
P3a/b	10:20 - 11:00	Thai	English	Maths	English	Maths
P4a	11:00 - 11:20	Physical Education	English	Maths	Performing Arts	Performing Arts
P4b	11:20 - 11:40	Physical Education	Mental Maths	IPC	Performing Arts	Performing Arts
P5a/b	11:40 - 12:20	Physical Education	Thai	IPC	MFL / Thai	Guided reading
	12:20 - 13:20	Lunch	Lunch	Lunch	Lunch	Lunch
P6a/b	13:20 - 14:00	Maths	Swimming	Guided reading	MFL / Thai	IPC
P7a	14:00 - 14:20	Maths	Guided reading	IPC	IPC	Assembly
P7b	14:20 - 14:40	Guided reading	Guided reading	IPC	IPC	Assembly
P8a	14:40 - 15:00	IPC	PC	IPC	Guided reading	Growing Minds
P8b	15:00 - 15:20	IPC	IPC	Mental Maths	Guided reading	Growing Minds

Secondary Example Timetable

		Monday	Tuesday	Wednesday	Thursday	Friday
	08:20 - 08:40	Registration	Registration	Registration	Registration	Registration
P1	08:40 - 09:20	Secondary Computing	Physical Education	Secondary Science	Secondary Music	Secondary Art
P2	09:20 - 10:00					
	10:00 - 10:20	Break	Break	Break	Break	Break
P3	10:20 - 11:00	Secondary Science	Secondary Geography	Thai for Thai	Secondary English	Thai for Thai
P4	11:00 - 11:40			Secondary History		
P5	11:40 - 12:20	Secondary English	Secondary English		Secondary Mathematics	Secondary Science
	12:20 - 13:20	Lunch	Lunch	Lunch	Lunch	Lunch
P6	13:20 - 14:00	Secondary English	Secondary English	Secondary Mathematics	Secondary Mathematics	Dance
P7	14:00 - 14:40	Secondary Mathematics	Secondary Drama	Secondary DT	Thai for Thai	Secondary Growing Minds
P8	14:40 - 15:20					

*IPC - International Primary Curriculum / MFL - Modern Foreign Languages

Our Campus

R School Reception

1 The Globe Theatre

2 Primary Building

3 Primary Playground

4 Early Years Building and Playground

5 Early Years / New Learners Pool

6 Football Pitch and Running Track

7 25 Metre Swimming Pool

8 Coffee Shop

9 Languages and Sixth Form Building

10 Secondary Building

11 Football Pitch and Long Jump Pit

12 Sports Hall

13 Round House

14 Astro Turf Football Pitch

15 Drama Studios

16 Girls' Boarding House

17 Art Studios

18 Boys' Boarding House

19 Design and Technology Building



Admissions and Tuition Fees 2021/22

Application Fee

This one-time-only fee is payable at the time of application.

Entry to all yeargroups	THB 7,500
-------------------------	-----------

Enrolment Fees

This non-refundable fee is payable on acceptance of an offered place at the school.

Pre-Nursery to Reception	THB 60,000
Year 1 To Year 13	THB 107,000

Tuition Fee

Year Group	Term 1	Term 2	Term 3	Full Year* (incl. of 5% discount)
Pre Nursery	THB 133,200	THB 99,900	THB 99,900	THB 316,350
Nursery/Reception	THB 157,800	THB 118,350	THB 118,350	THB 374,775
Year 1 & 2	THB 212,400	THB 159,300	THB 159,300	THB 504,450
Year 3 to 6	THB 221,400	THB 166,050	THB 166,050	THB 525,825
Year 7 to 8	THB 270,800	THB 203,100	THB 203,100	THB 643,150
Year 9	THB 277,600	THB 208,200	THB 208,200	THB 659,300
Year 10	THB 286,600	THB 214,950	THB 214,950	THB 680,675
Year 11 to 13**	THB 358,250	THB 358,250	-	THB 680,675

*Annual fee must be paid before 16 August 2021 to qualify for the 5% discount (for new students only).

**Tuition fees for Years 11, 12 and 13 are to be paid in two equal instalments of THB 358,250 before Terms 1 and 2 commence. IGCSE and IBDP examination fees are billed as an additional amount in the second term of Years 11 and 13 respectively. The fees will be between THB 35,000 and THB 45,000 depending on your child's choice of subjects.

School Lunch

Early Primary and Primary: Students are offered a choice of Western, Thai and Asian options. The cost of the Meal Plan is THB 12,300 for Term 1 and THB 9,200 for each of Terms 2 and 3. Secondary: The Secondary School lunch service operates as a 'food court', where students use their school ID card to pay for lunch.

English Language Acquisition Programme (if applicable)

Year Group	Term 1	Term 2	Term 3
Primary	THB 46,000	THB 34,500	THB 34,500
Secondary	THB 60,000	THB 45,000	THB 45,000

Personalised Support Programme (if applicable)

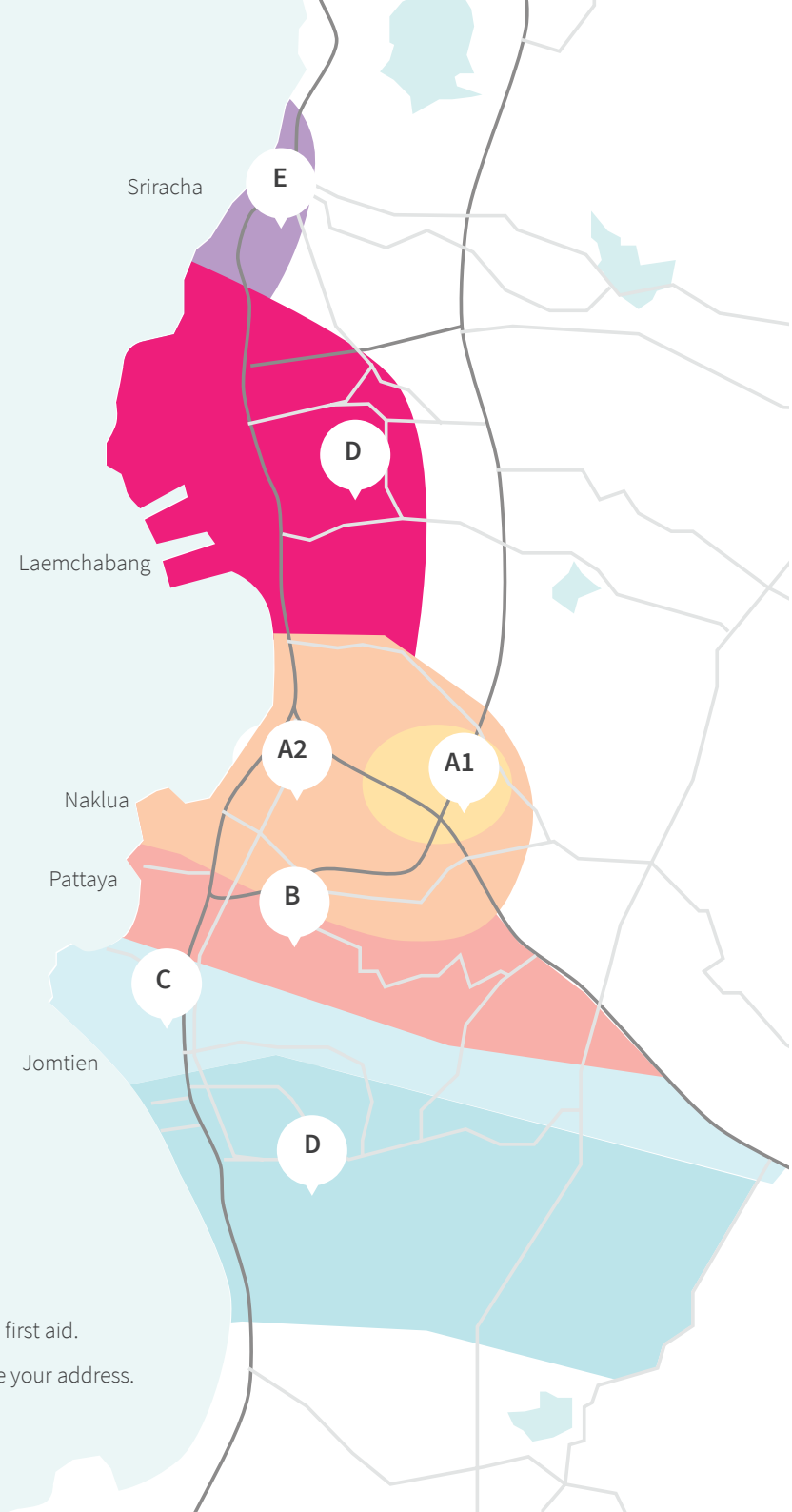
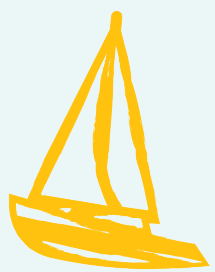
All Year Groups	Term 1	Term 2	Term 3
Level 1	THB 5,760	THB 4,320	THB 4,320
Level 2	THB 11,520	THB 8,640	THB 8,640
Level 3	THB 17,280	THB 12,960	THB 12,960
Level 4	THB 23,040	THB 17,280	THB 17,280
Level 5	THB 28,800	THB 21,600	THB 21,600

Boarding Fees (if applicable)

Year Group	Term 1	Term 2	Term 3	Full Year* (incl. of 5% discount)
Year 3 to 13	THB 156,600	THB 117,450	THB 117,450	THB 371,925

A retainer of THB 30,000 is required for all boarding students to cover incidental expenses. Parents will be asked to top up this fund as required. Any amounts remaining when the student leaves boarding will be refunded. The Boarding fee is inclusive of all meals, weekend trips, afternoon activities, laundry and 24-hour supervision from qualified staff.

*Annual fee must be paid before 16 August 2021 to qualify for the 5% discount (for new students only).



Our School Transport

Term 1	Term 2	Term 3
Zone A1: Nongketyai		
THB 19,860	THB 14,895	THB 14,895
Zone A2: Naklua, North Pattaya, Rong Poh, Mabprachan		
THB 25,920	THB 19,440	THB 19,440
Zone B: Nern Plab Wan, Central Pattaya, South Pattaya		
THB 28,040	THB 21,030	THB 21,030
Zone C: Burapha, Theprasit, Jomtien, Chaiyapreuk		
THB 36,840	THB 27,630	THB 27,630
Zone D: Ocean Marina, Ao Udom, Laem Chabang		
THB 42,840	THB 32,130	THB 32,130
Zone E: Sriracha		
THB 47,760	THB 35,820	THB 35,820

Our bus captains and monitors are fully trained in first aid.
 NB: Your bus zone will be confirmed once we have your address.

How to pay

All fees are billed and payable in Thai Baht. Domestic payments may be made by crossed cheque or deposit/transfer directly to our accounts at any of the following three banks:



Bank Name: Bangkok Bank

Account Name: Regent Pattaya Campus Management Co., Ltd
Account Number: 342-4-57509-4
SWIFT Number: BKKBTHBK
Bank Branch: Banglamung branch

Bank Name: Krung Thai Bank

Account Name: Regent Pattaya Campus Management Co., Ltd
Account Number: 592-0-15111-0
SWIFT Number: KRTHTHBK
Bank Branch: Banglamung (Talad Na Klua)

Bank Name: Kasikorn Bank

Account Name: Regent Pattaya Campus Management Co., Ltd
Account Number: 321-2-60016-3
SWIFT Number: KASITHBK
Bank Branch: Banglamung (Talad Na Klua)

Please send a copy of the deposit slip to the school
by fax to: **+66 (0) 38 4 18 778**
or e-mail: **RISP.finance@regents-pattaya.co.th**

Thai personal cheques, cashiers cheques and bankers' drafts are accepted. These should be made payable to Regent Pattaya Campus Management Co., Ltd. We are unable to accept overseas cheques and bankers' drafts.

Receipts for payments by personal cheque will only be issued once the cheque has cleared. Please note that all bank charges, including intermediary bank charges are the responsibility of the transferor and will be deducted from the amount received. The school shall receive the full value of the invoice.

The school accepts payment by credit card (Visa, Mastercard) on certain conditions. Please note that for all credit and debit card transactions a 1.5% charge is levied.

Opportunities
beyond
the ordinary.

Our Signature Scholarships



We are delighted to invite students to apply for one of our prestigious Signature Scholarships, available for students whose passions lay in the arts, sports or those with exceptional academic abilities. Please find detailed information and application forms for download on our website at www.nordangliaeducation.com/en/our-schools/pattaya/admissions/our-signature-scholarships

You must have secured a place at Regents as a student before applying for a scholarship.

The Regents Lion Scholarship

The Regents Lion Scholarship is aimed at talented and emerging athletes who demonstrate the loyalty, passion and commitment to being a Regents Lion. They will demonstrate excellent team working skills, natural leadership, show unwavering ambition for themselves and their peers.



The Kurt Hahn Scholarship

The Kurt Hahn Scholarship is awarded to young people who demonstrate they have a commitment to the Round Square. Kurt Hahn Scholars will have discovered and developed their own capabilities through a range of experiences, activities, collaborative projects and challenges, both within and outside the curriculum, including social service projects, exchanges and conference participation.



International Baccalaureate Scholarship

The IBDP scholarship student is expected to be highly talented and academically ambitious, keen to participate fully in the life of the school and beyond the classroom, and an exemplary role model for both peers and younger students.



The Performing Arts Scholarship

The Performing Arts Scholarship is awarded to those exceptional performers who can demonstrate their participation in a range of musical, dance or dramatic performances. Students with creativity, curiosity, and cultural literacy that engage with the performing arts throughout their lives are eligible.



Junior Scholarship

Given the limited number of scholarships and the high selection standards and criteria, we know it can be difficult for some of our students to gather sufficient evidence to achieve a full award. As we do want to offer them encouragement to continue to improve both attitude to learning and their contribution to the Regents community we are delighted to offer our new Junior Scholarship award. Students can apply for our normal category of scholarship: LIONS, Performing Arts, Kurt Hahn or International Baccalaureate. The Scholarship Committee will review the application and may offer a Junior award with a scholarship of between 5-20%.



Visit our website here to find our more

Good to know

Accident Insurance

The school has accident insurance for students free of charge which covers them **up to THB 10,000** for medical expenses. There is no medical insurance coverage. **Parents must have their own medical insurance in place for their children before they will be allowed to attend school.**

Sibling Discount

Sibling discounts are offered on tuition fees only where three or more children from the same family attend school. There is a 5% sibling discount for the 3rd child, 10% for the 4th and more. The percentage discount is applicable to younger siblings' tuition fees only.

Annual Payment Discount

Where annual tuition fees and boarding fees for the academic year are paid in full prior to the first day of the academic year, a discount of 5% shall apply.

Enrolment Throughout the Year

Discounts are given to those who enrol after the mid-term:

From start to Mid-term: no discount

From mid-term to three quarter term: 25%

Thereafter: 50%

Methods of Payment

The school accepts payment by credit card (Visa, Mastercard) on certain conditions. Please note that for all credit card and debit card payments a 1.5% charge is levied.

Notice of Withdrawal

Please note, as per our terms of business, withdrawal from the school requires **one full term's notice**. The school reserves the right to withhold any documents for departing students until all fees are settled in full.



Key Contacts

Mimmie Norin, Admissions Manager

Nadia Fisher, Senior Admissions Coordinator

Nicolas Pongtouch Thielen, Admissions Officer

Jingwen Sun (Mary), Chinese Liaison Officer

admissions@regents-pattaya.co.th

Parent Supporters Group

The members of the Parent Supporters Group (PSG) work together to provide a communication link between parents, teachers, and school administrators. An important part of their role in our community is to welcome and guide all new families joining and moving to Pattaya. As a new parent they will contact you to offer support and help put you in touch with other families from your home country.

We welcome parents into our school and value the contribution they make to our vibrant community. Parents are involved in many activities throughout the year helping us to celebrate festive occasions, charity events, cooking classes and supporting our students with many of their activities. We encourage you to get involved!



Emails
regentspsgchairperson@gmail.com
regentsvicechairpsg@gmail.com
regentspsgtreasurer@gmail.com



Scan the QR code for more information

Parent Supporters Group
stay informed
get connected
show support



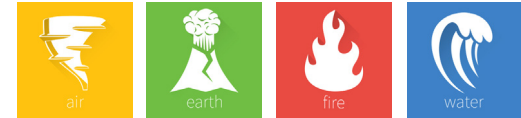
Be Ambitious
Be Regents.

School Uniform

All students in Early Years, Key Stage 1, 2 and 3 are required to wear school uniform, as well as specific sports kits. Full details can be found on the school website.

Uniforms can be purchased from the uniform shop, located next to the Admissions Office in the Early Primary building. A full list of prices is available on request.

Every Friday we all wear our House t-shirts. You will receive your first House t-shirt free of charge when you join the school.



Contact us

Regents International School Pattaya
33/3 Moo 1, Pong, Banglamung
20150 Chonburi, Thailand

Email

admissions@regents-pattaya.co.th

School Website

www.regents-pattaya.co.th

General Enquiries

+66 (0) 38 418 777



**REGENTS INTERNATIONAL SCHOOL
PATTAYA**

A NORD ANGLIA EDUCATION SCHOOL

Be Ambitious Be Regents