



Pastoral Care Team

The Role of the
Safeguarding Team and
School Counsellor



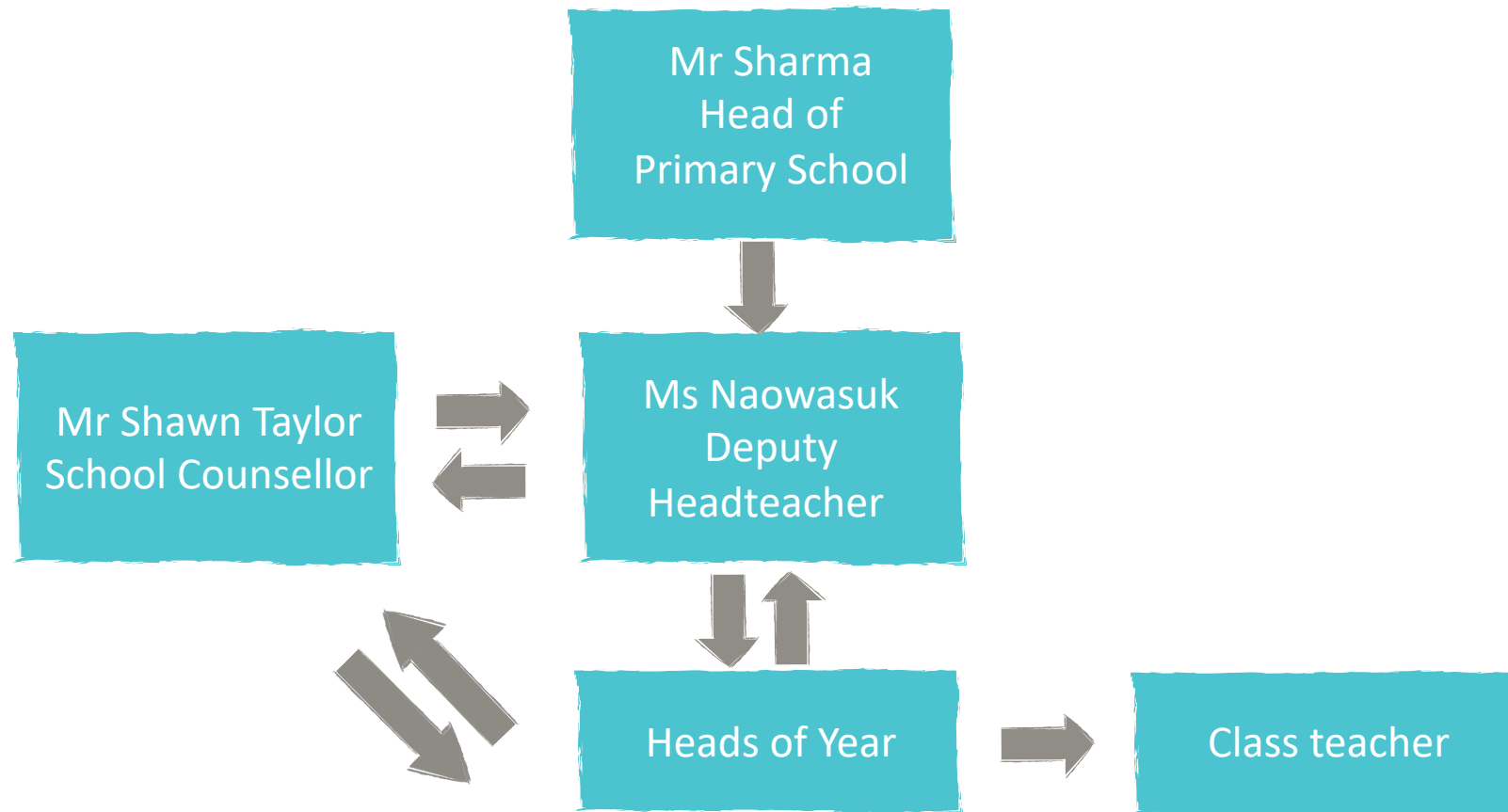
**REGENTS INTERNATIONAL SCHOOL
PATTAYA**

A NORD ANGLIA EDUCATION SCHOOL

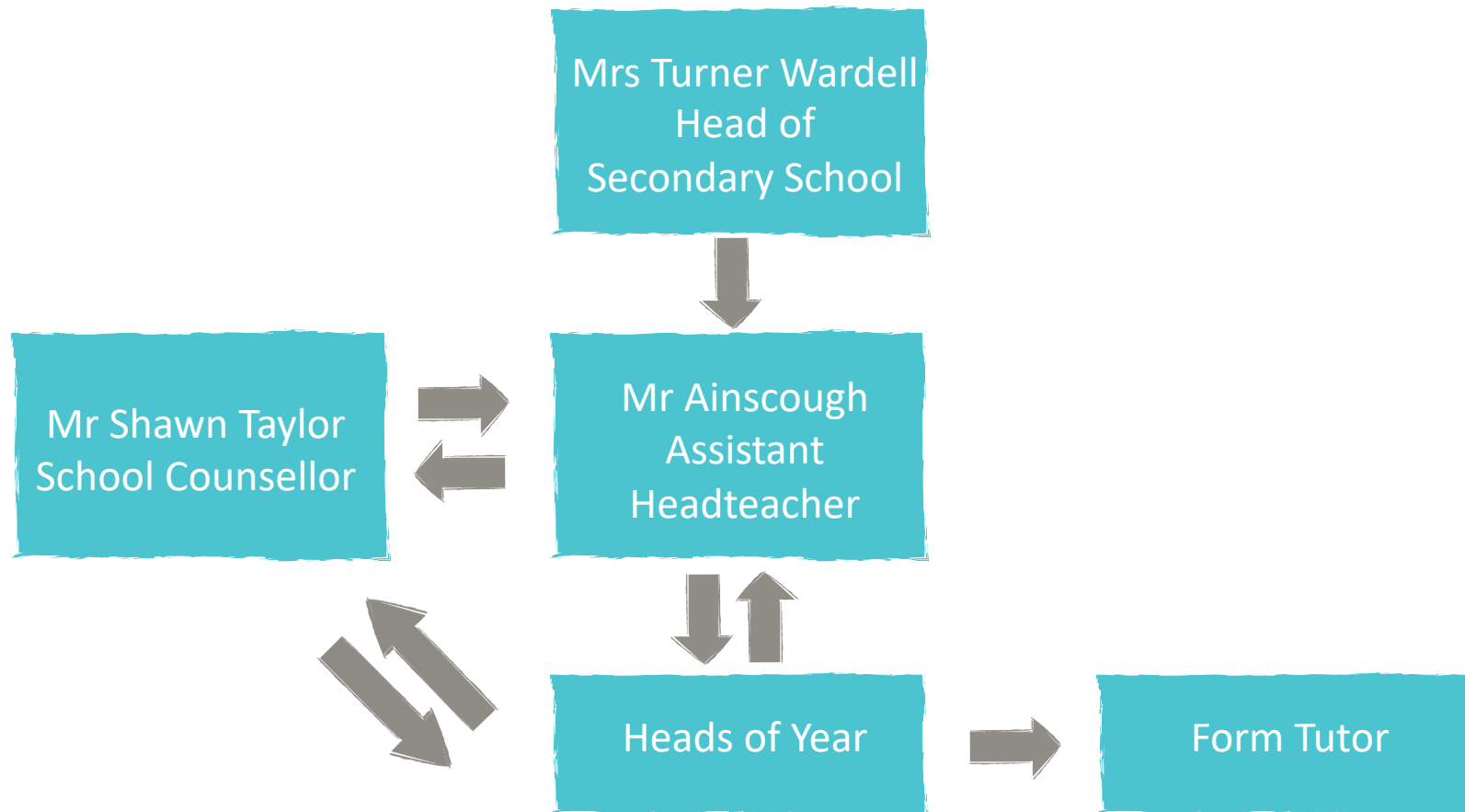


Be Ambitious Be Regents

The Pastoral Team (Primary)



The Pastoral Team (Secondary)



Mrs. Hannah Naowasuk - Deputy Head of Primary and Primary Safeguarding Lead



Hannah holds a Bachelor of Education degree from the University of Plymouth (UK).

She joined the Regents family in 2008, having worked for 6 years in the British education system.

Her teaching career began in the South of England, where she gained valuable experience in both Key Stage 1 and 2, as well as holding subject leadership posts.

She has 18 years of teaching and leadership experience and having initially started at Regents as a Year 1 teacher, she has worked her way up through various positions of responsibility and is now looking forward to her second year as Deputy Head of Primary.

She is the proud mother of two and, outside of school, she pursues an active lifestyle with her family.

Mr. Harry Ainscough - Assistant Head and Secondary Safeguarding Lead



Harry holds a BA(Hons) in Geography from the University of Leeds, UK and a PGCE from the University of Sunderland, UK (Geography specialism).

He has 15 years of experience as a teacher and senior leader in British schools and local government roles.

His career began in the North of England, where after having been a teacher of geography in a Secondary school, he worked his way up to a senior management position in a North East England Secondary school before moving across to a senior management position in local government in a North East England local authority.

After leading the education service to champion the needs of children in care in a local authority, he arrived in Thailand in 2019 and feels very privileged to be part of the Regents community.

Outside of school he enjoys being with his family, trail running and rock climbing.

Mr. Shawn Taylor - Whole School Counsellor



Mr. Shawn Taylor has extensive knowledge in the area of psychology and has worked in the field for over 15 years with a strong background in behavioral psychology and psycho-therapeutic technique; being a trained (ABA) Applied Behavior Analyst practitioner.

Shawn is a member of both the Australian and Singaporean Psychological Societies and holds registration with the British Psychological Society as an Educational Assessor.

He has worked extensively within the international schooling community in Thailand specializing in clinical assessment and training and education programs.

Shawn advocates a person-centered approach, directed at improving the lives of students, family and faculty, with the aim of creating a safe therapeutic space in which we foster self-awareness, mindfulness, personal growth and transformation.

The Role of Safeguarding

- ✓ To ensure the safety and wellbeing of our students.
- ✓ To support students to identify risks and keep themselves safe from potential harm.
- ✓ To support students with their mental health.
- ✓ To work with parents and families to support the needs of our young people.

The Role of the School Counsellor

- ✓ Help students understand and overcome social or behavioral problems through individual and group counselling.
- ✓ Provide individual and small group counselling based on student needs.
- ✓ Work with students to develop skills such as organization, time management, and effective study habits.
- ✓ Help students set realistic academic and career goals and develop a plan to achieve them.
- ✓ Develop strategies with teachers, administrators, and parents to help students succeed.
- ✓ Teach classes on topics such as bullying, risk taking behaviours, and planning for college or careers after graduation
- ✓ Identify and report possible cases of neglect or abuse.
- ✓ Refer students and parents to resources outside the school for additional support.

The Referral Process

- ✓ Parent contacts school seeking support
- ✓ School identifies possible need for support and contacts parents
- ✓ Secondary students can access lunch time drop-in sessions with no appointment



What Happens Next ...

- ✓ School counsellor will meet with student.
- ✓ School counsellor may also contact home to discuss students needs with parents.
- ✓ Confidentiality is maintained for the student unless the counsellor is concerned for the safety of the child.
- ✓ Concerns of this nature would be raised with the schools safeguarding leads: Mrs Naowasuk (Primary) Mr Ainscough (Secondary).
- ✓ School counsellor works as part of the pastoral team to ensure students are supported across school.

What Happens In A Session ...

- ✓ Sessions are conducted 1:1
- ✓ 40 minute session (single period)
- ✓ Confidential
- ✓ Built on trust
- ✓ Young person is given the opportunity to explore their feelings, emotions and experiences.
- ✓ The process helps the young person make sense of how and why they might be feeling a certain way.

The Counselling Room



How else do we support ?

- ✓ Face to face sessions
- ✓ Drop in clinic
- ✓ Through Teams platform
- ✓ Throughout OSL (during the OSL period online-counselling sessions were provided to students in both Primary and Secondary)

How do you contact us?

Mrs. Hannah Naowasuk (Deputy Head – Pastoral)

E: hannah.naowasuk@regents-pattaya.co.th

Mr. Harry Ainscough (Assistant Head – Pastoral)

E: harry.ainscough@regents-pattaya.co.th

Mr. Shawn Taylor (Whole School Counsellor)

E: shawn.taylor@regents-pattaya.co.th

Thank you.



**REGENTS INTERNATIONAL SCHOOL
PATTAYA**

A NORD ANGLIA EDUCATION SCHOOL



Be Ambitious Be Regents