

# Uniform Guide



**THE BRITISH SCHOOL  
OF GUANGZHOU**  
A NORD ANGLIA EDUCATION SCHOOL

[www.bsg.org.cn](http://www.bsg.org.cn)



The uniform is an important element of the British School of Guangzhou. We believe it has numerous benefits; helping students to focus on their work and their activities while at school, encouraging positive social interaction amongst pupils and even making life a little easier for parents.

We also believe the uniform can help to create a sense of community. When worn properly, it generates a shared identity among pupils and can help instil a sense of pride and belonging. Parents play a critical role in realising these benefits by making sure children wear uniform correctly every day.

## *Dress Uniform*

'Dress' uniform is worn in the winter months (mid-November to April), but is also used for formal events and performances throughout the year. This includes choir and orchestra concerts, official school photographs and special visits.

### Contact

**During School Hours:**

(+86 020) 8709 4788 Ext. 2065  
(Guangzhou)

**Out of School Hours:**

(+852) 2742 2498 (Hong Kong)

**China Manager:**

Mr George Zuo (Mandarin,  
Cantonese & English)

**Hong Kong Manager:**

Ms. Wendy So (Mandarin,  
Cantonese & English)

[bsguniform@163.com](mailto:bsguniform@163.com)

Early Years

4-7

Primary

8-10

Secondary

11-12

Sports & Adults

13-15

# Toddlers

## Summer



02. Short-Sleeve Polo Shirt (Unisex)



23. PE Shorts (Unisex)

00. Ankle Socks (Unisex)



## Winter

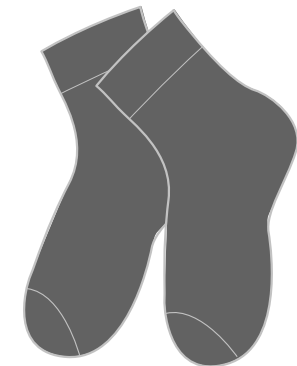


42. Track Pants (Unisex)



40. Long-Sleeve Polo Shirt (Unisex)

05. Navy Ankle Socks (Unisex)



# Pre-Nursery - Reception (Boys)

## Summer

02. Short-Sleeve  
Polo Shirt (Unisex)



03. Boy's Shorts



05. Boy's Ankle Socks



## Winter

40. Long-Sleeve Polo Shirt  
(Unisex)



18. Trousers



06. Wool Jumper  
(Unisex)



# Pre-Nursery - Reception (Girls)

## Summer

41. Summer Dress



44. Girl's Under Shorts



00. Girl's Ankle Socks



## Winter

40. Long-Sleeve Polo Shirt



04. Girl's Skort



06. Wool Jumper (Unisex)



47. Girl's Tights



36. Girl's Knee-High Socks



# Essential Extras

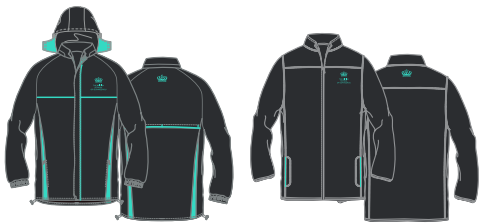
01. School Bag  
(Toddler - Year 4)



22. House T-Shirts (Unisex)



34. 2-in-1 Outdoor Jacket (Unisex)



19. Sun Hat



33. Fleece Vest (Unisex)



37. Scarf



38. Hairband



## Footwear

Black shoes are not supplied by the school but are a necessary part of the uniform.



# Years 1 - 6 Summer

02. Short-Sleeve  
Polo Shirt (Unisex)



03. Boy's Shorts



05. Boy's Ankle Socks



04. Girl's Skort



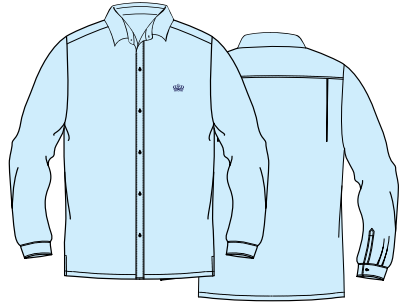
00. Girl's Ankle Socks





# Years 1 - 6 Dress & Winter

08. Boy's Long-Sleeve Shirt



18. Trousers



32. Boy's Blazer



05. Boy's Ankle Socks



07. Girl's Long-Sleeve Blouse



04. Girl's Skort



31. Girl's Blazer



16. Primary School Tie



06. Wool Jumper (Unisex)



36. Girl's Knee-High Socks



47. Girl's Tights



# Essential Extras

09. School Bag (Y5+)



22. House T-Shirts (Unisex)



19. Sun Hat



34. 2-in-1 Outdoor Jacket (Unisex)



38. Hairband



33. Fleece Vest (Unisex)



37. Scarf



# Footwear



Black shoes are not supplied by the school but are a necessary part of the uniform.

## Sports Shoes

When participating in sports activities, students in Year 1 and above change clothes appropriately. When sports shoes are required, we ask parents to provide suitable shoes in any colour (*note: these are not available through our uniform shop*).



# Years 7 - 11 Summer

10. Boy's Short-Sleeve Shirt (Senior)



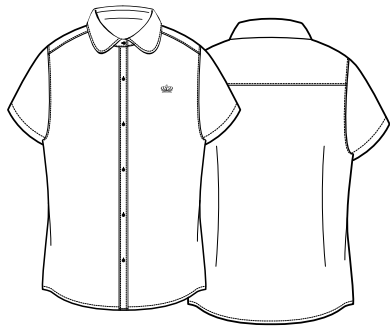
03. Boy's Shorts



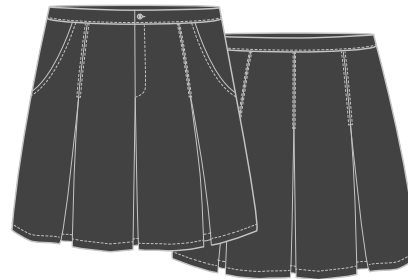
05. Boy's Ankle Socks



11. Short-Sleeve Blouse (Girls)



12. Skirt (Senior)



00. Girl's Ankle Socks



17. Tie



32. Boy's Blazer



31. Girl's Blazer



# Years 7 - 11 Dress & Winter

14. Boy's Long-Sleeve Shirt (Senior)



18. Trousers



32. Boy's Blazer



05. Boy's Ankle Socks



15. Girl's Long-Sleeve Blouse (Senior)



12. Skirt (Senior)



31. Girl's Blazer



17. Secondary School Tie



06. Wool Jumper (Unisex)



47. Girl's Tights



36. Girl's Knee-High Socks



## Years 1 - 13

21. PE T-Shirt (Unisex)



23. PE Shorts (Unisex)



48. Girl's PE Skort (Y4+)



25. Hoodie (Unisex)



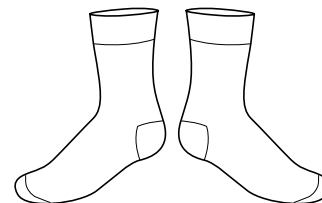
26. Track Pants (Unisex)



20. Sports Bag



35. Sport Socks (Unisex)



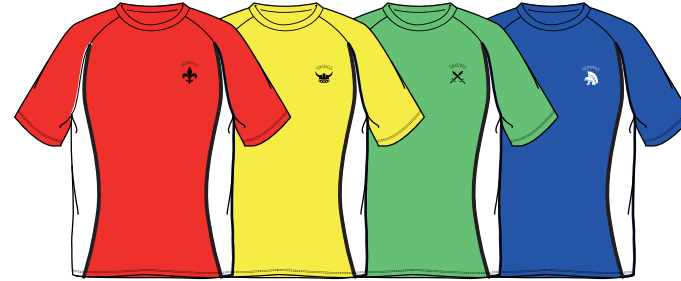
When participating in sports activities, students in Year 1 and above change clothes appropriately. When sports shoes are required, we ask parents to provide suitable shoes in any colour (*note: these are not available through our uniform shop*).

# Swimming & House Attire

30. Boy's Swimming Shorts



22. House T-Shirts (Unisex)



46. Swim Bag



MULTI02. House Ties (Unisex)

*Only elected House Captains wear house ties*



29. Girl's Swim Suit



27. School Swim Cap



28. House Swim Cap



# Team Kits & Adults

## K12 ACTIVEWEAR

Sports team items, adult supporter wear and accessories are available separately from the K12 BSG site ([www.K12org.com](http://www.K12org.com)).

Note: Items purchased through K12 cannot be worn as daily uniform items.



Scan QR code to visit  
K12 Sports

*Athletics*



*Basketball*



*Football*



*Supporter's T-Shirt*



*Supporter's Polo Shirt*



*Sports & Swimming Towel*



*Umbrella*



**Contact us**

The British School of Guangzhou  
983-3 Tonghe Road, Baiyun District,  
Guangzhou, 510515

**Email**

[admissions@bsg.org.cn](mailto:admissions@bsg.org.cn)

**School Website**

[www.bsg.org.cn](http://www.bsg.org.cn)

**General Enquiries**

+86 (0)20 8709 4788

*Be Ambitious*